

CREATIVE OFFICE/RETAIL/STUDIO SPACE AVAILABLE

1517 E 5TH AVE, TAMPA, FL 33605

JEREMY PETERSON

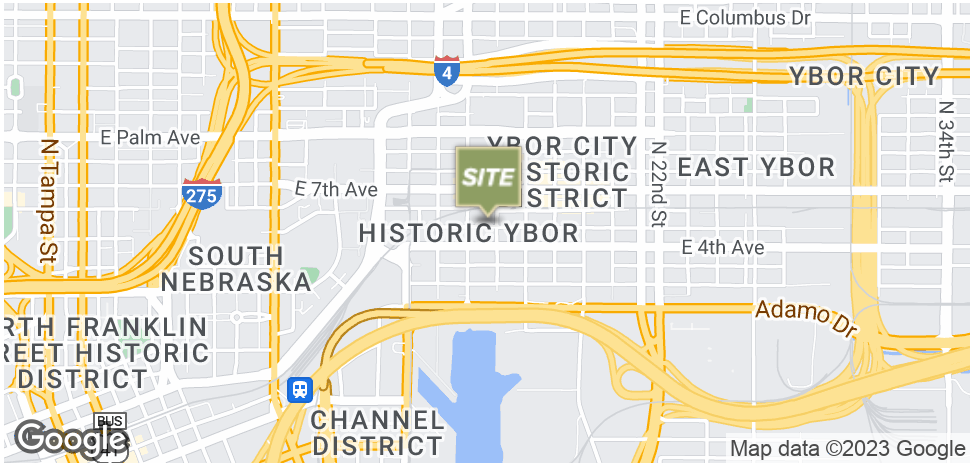
Vice President
T 512.391.0718 x133 | C 413.949.0390
jpeterson@stcroixca.com

Phone: 512.391.0718 | Fax: 512.870.9371 | stcroixca.com



FOR LEASE | 1517 E 5TH AVE

1517 E 5TH AVE, TAMPA, FL 33605



OFFERING SUMMARY

Lease Rate: Negotiable

Building Size: 2,710 SF

Available SF: 2,710 SF

Building Class: B

PROPERTY OVERVIEW

+/- 2700 SF of space available on ~ 0.25 acres. Abundance of parking, location, and flexible zoning make this a rare opportunity in the heart of historic Ybor City.

PROPERTY HIGHLIGHTS

- Zoning: YC-6
- Fenced in yard and parking lot
- Large yard
- 1 floor + Mezzanine
- Full kitchen and two bathrooms
- <5 min walk to center of historic 7th Ave in Ybor City
- ~5 min drive to Downtown Tampa
- ~15 min drive to Tampa International Airport

JEREMY PETERSON

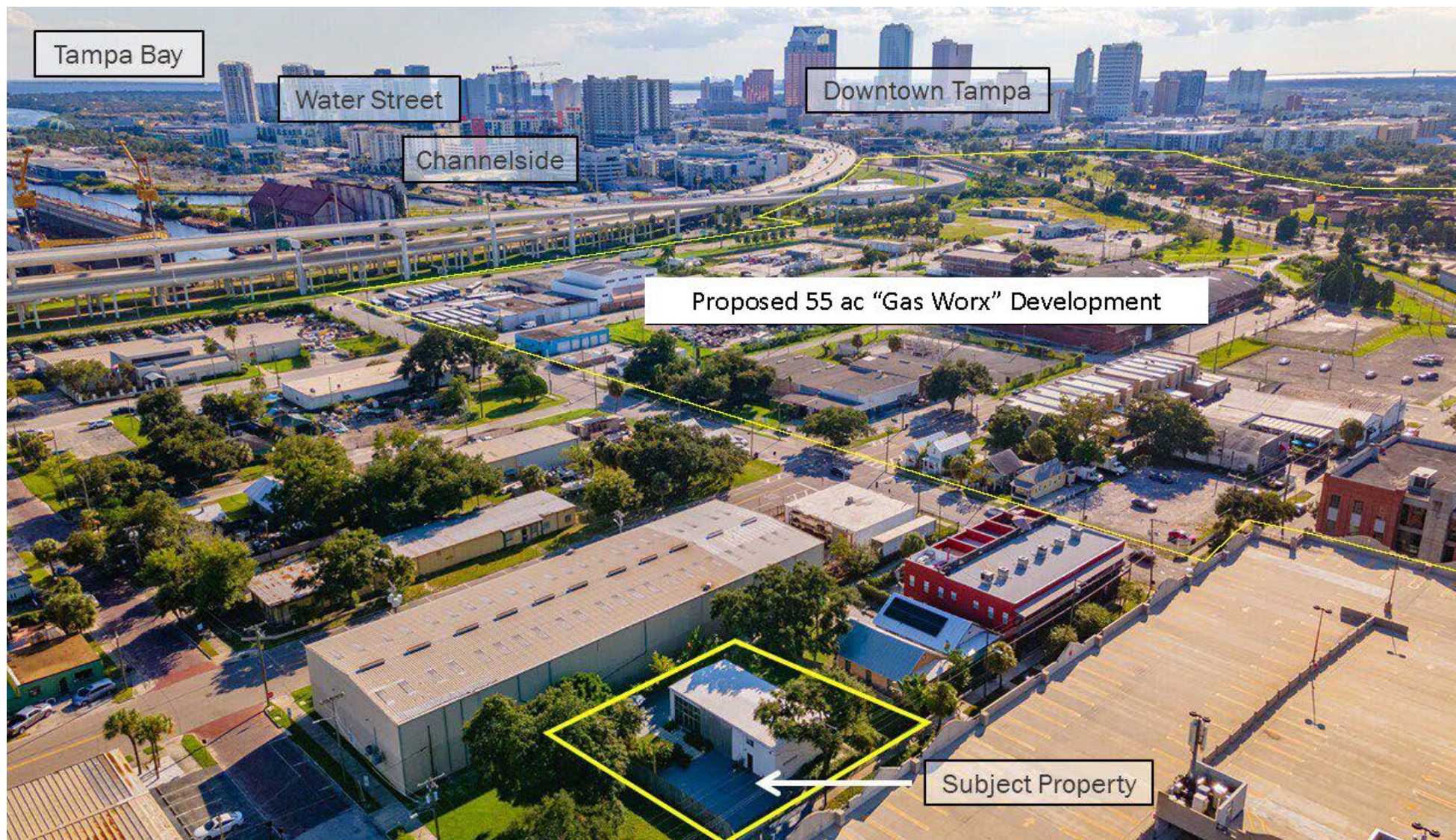
Vice President
T 512.391.0718 x133 | C 413.949.0390
jpeterson@stcroixca.com



www.stcroixcra.com

FOR LEASE | 1517 E 5TH AVE

1517 E 5TH AVE, TAMPA, FL 33605



JEREMY PETERSON

Vice President

T 512.391.0718 x133 | C 413.949.0390

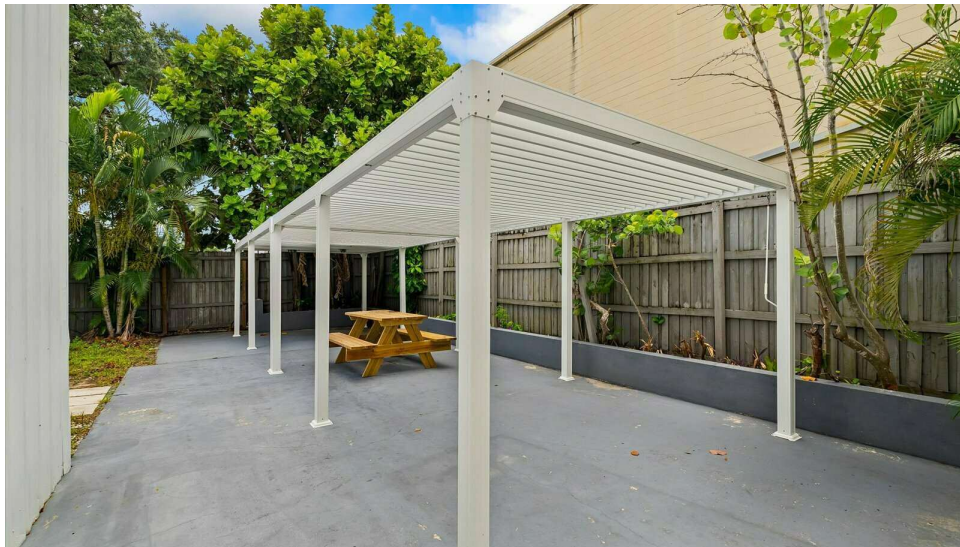
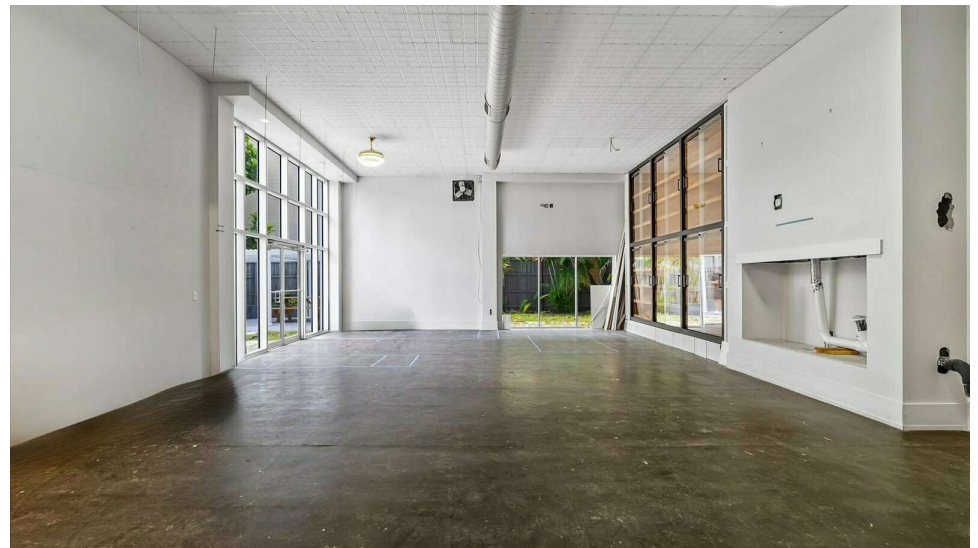
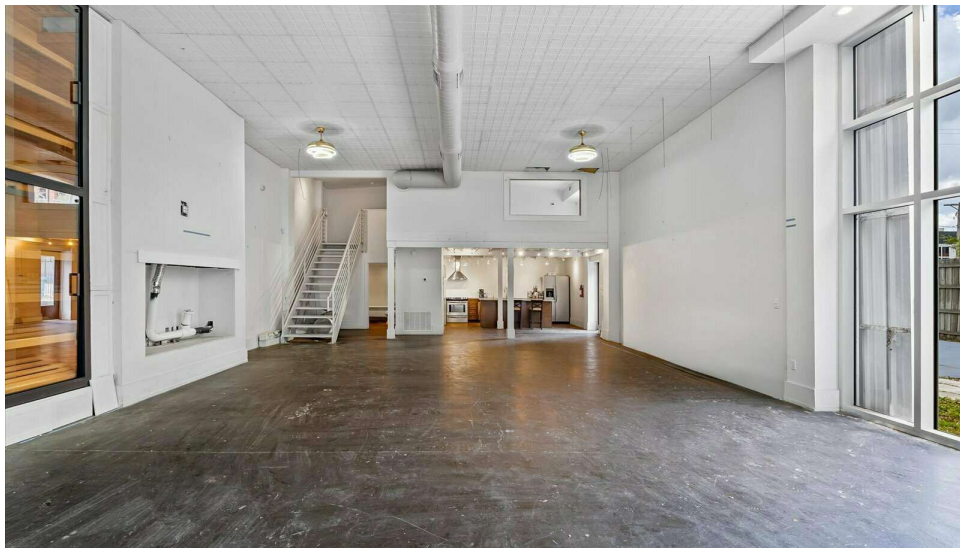
jpeterson@stcroixca.com



www.stcroixcra.com

FOR LEASE | 1517 E 5TH AVE

1517 E 5TH AVE, TAMPA, FL 33605



JEREMY PETERSON

Vice President

T 512.391.0718 x133 | C 413.949.0390

jpeterson@stcroixca.com



www.stcroixcra.com

FOR LEASE | 1517 E 5TH AVE

1517 E 5TH AVE, TAMPA, FL 33605



JEREMY PETERSON

Vice President

T 512.391.0718 x133 | C 413.949.0390

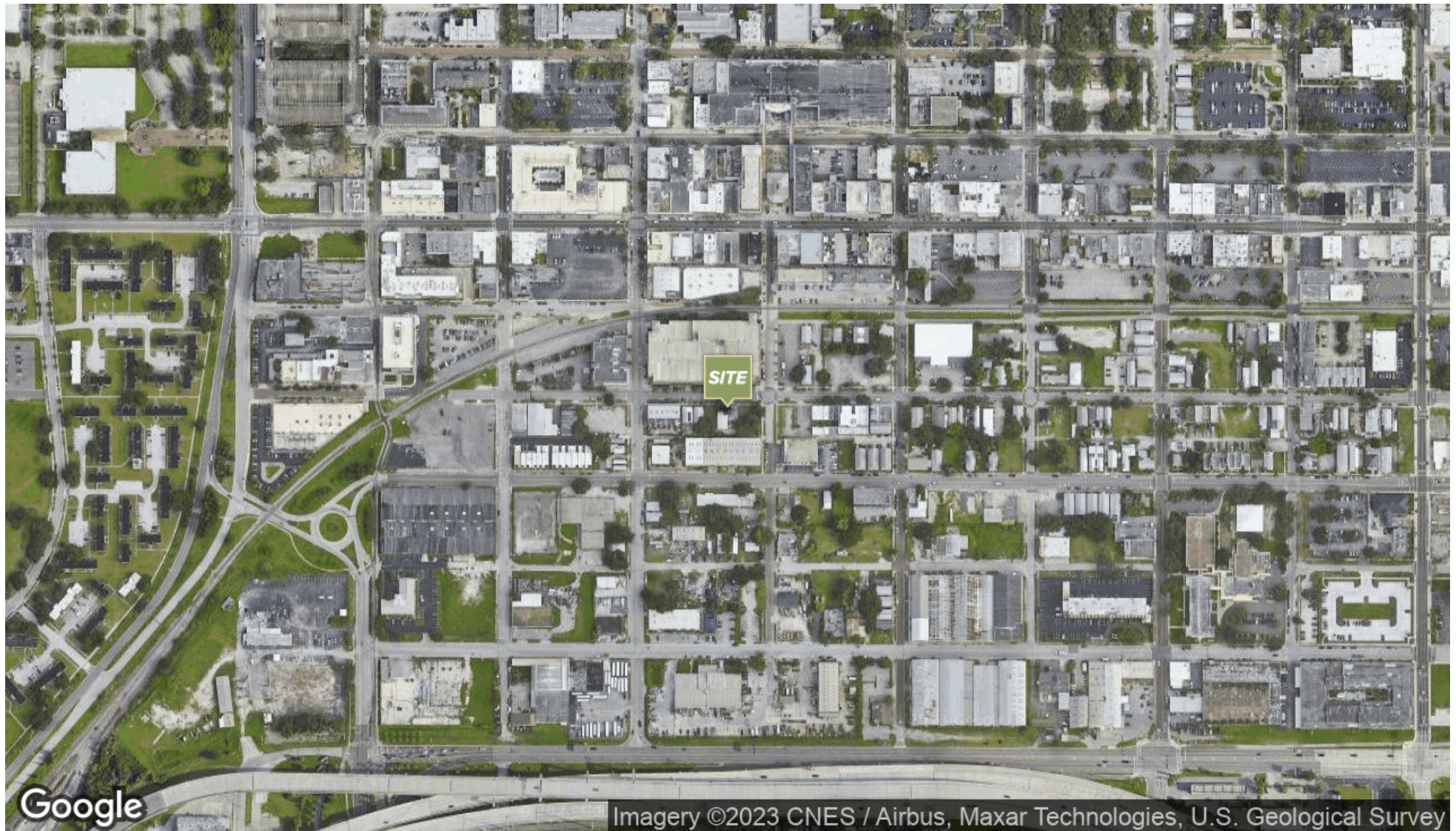
jpeterson@stcroixca.com



www.stcroixcra.com

FOR LEASE | 1517 E 5TH AVE

1517 E 5TH AVE, TAMPA, FL 33605



JEREMY PETERSON

Vice President

T 512.391.0718 x133 | C 413.949.0390

jpeterson@stcroixca.com



www.stcroixcra.com

FOR LEASE | 1517 E 5TH AVE

1517 E 5TH AVE, TAMPA, FL 33605

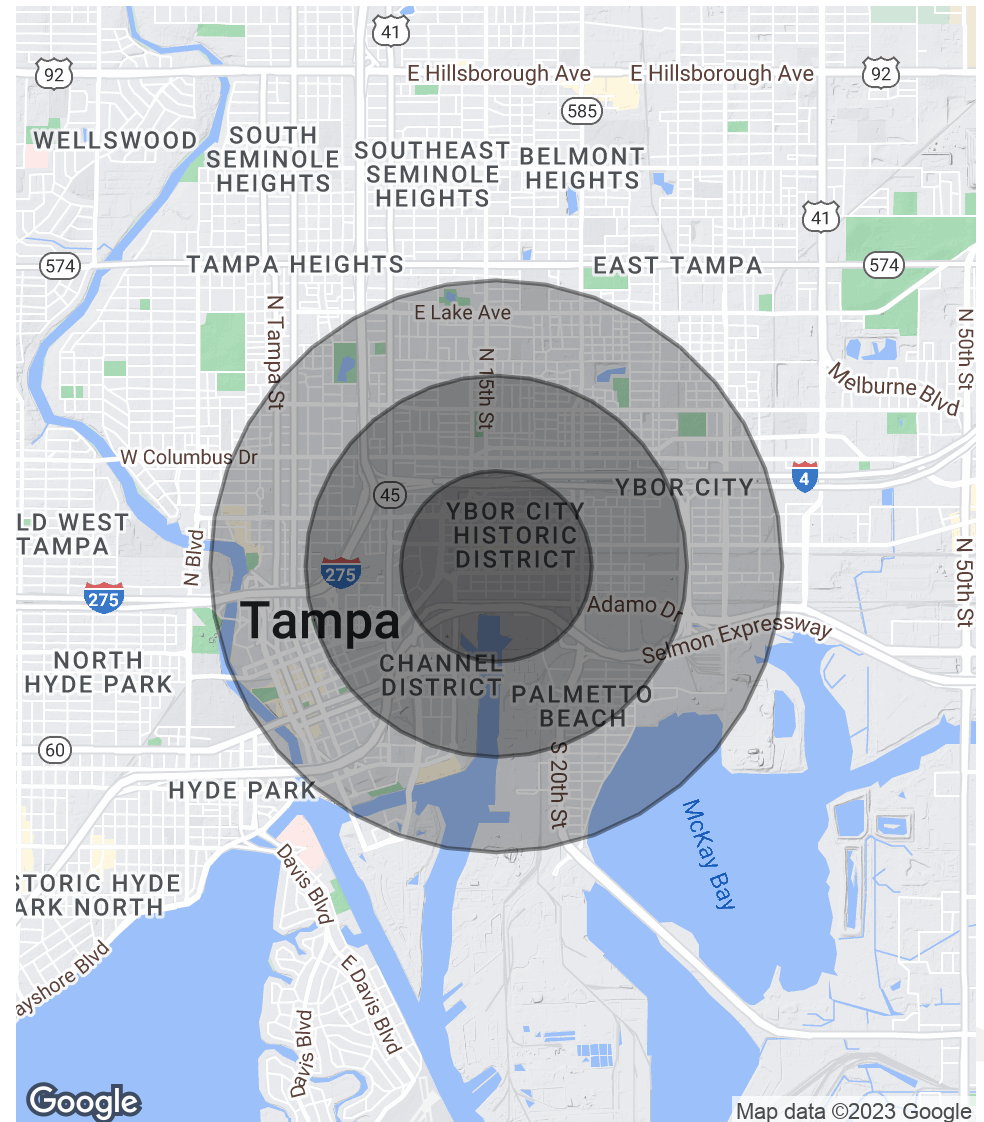
POPULATION

	0.5 MILES	1 MILE	1.5 MILES
Total Population	2,544	12,838	27,228
Average Age	34.1	36.2	35.7
Average Age (Male)	35.0	36.3	36.2
Average Age (Female)	32.0	36.6	35.6

HOUSEHOLDS & INCOME

	0.5 MILES	1 MILE	1.5 MILES
Total Households	1,758	7,937	15,408
# of Persons per HH	1.4	1.6	1.8
Average HH Income	\$60,827	\$57,260	\$59,912
Average House Value	\$199,530	\$216,598	\$212,890

* Demographic data derived from 2020 ACS - US Census



JEREMY PETERSON

Vice President

T 512.391.0718 x133 | C 413.949.0390

jpeterson@stcroixca.com



www.stcroixcra.com