

FOR SALE:

PEAK
Real Estate Partners

1051 SE CENTURY DRIVE

LEE'S SUMMIT, MO 64081



WILLIAM BOLEN



(913) 638-4049



WBOLEN@PEAKREP.COM

1051 SE CENTURY DRIVE

LEE'S SUMMIT, MO 64081

PROPERTY HIGHLIGHTS:

- 8,800 SF building on 0.80 acres
 - 4,729 SF office/showroom
 - 4,071 SF warehouse space
- 5 private offices, 1 conference area, 1 kitchen area, large display area, mezzanine level workspace
- Built 2002
- Zoning - P1
- 1 Drive in door – 10' x 10'
- Building height – 18' – 22'
- New TPO roof in 2019
- Gated surface lot/outdoor storage
- 23 parking spaces
- Pricing – Call for details



PROPERTY AERIAL

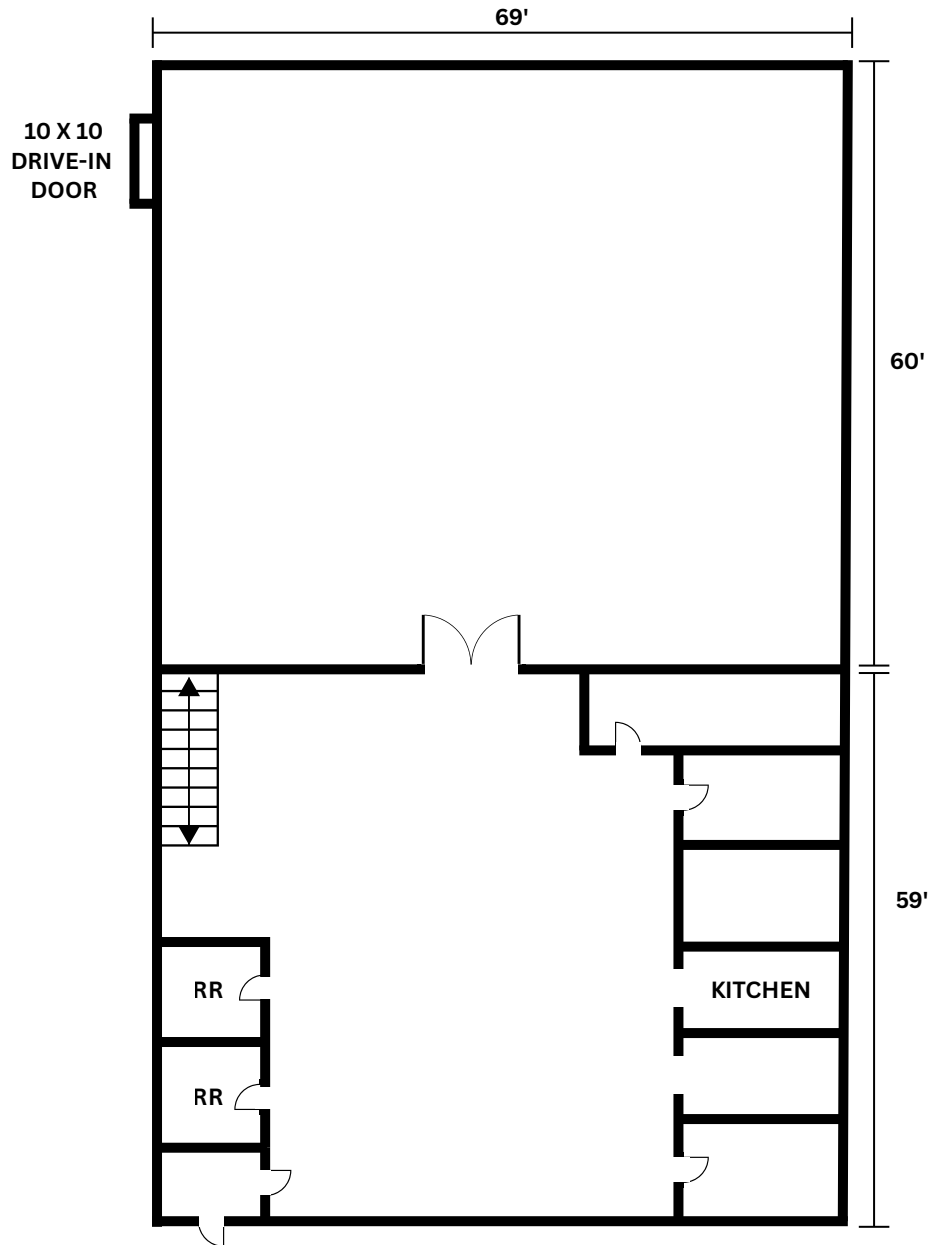
1051 SE CENTURY DRIVE | LEE'S SUMMIT, MO



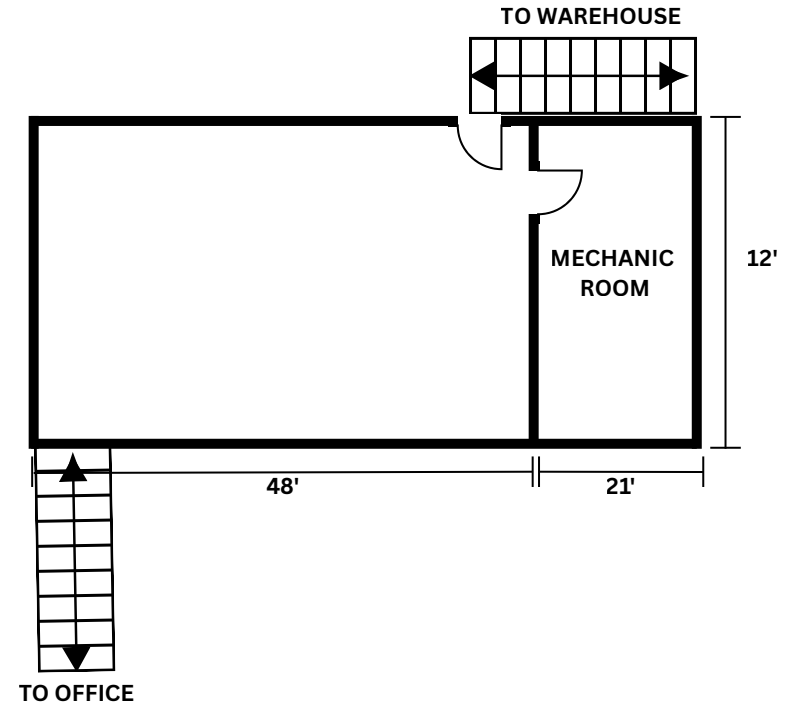
FLOOR PLAN

1051 SE CENTURY DRIVE | LEE'S SUMMIT, MO

FIRST FLOOR



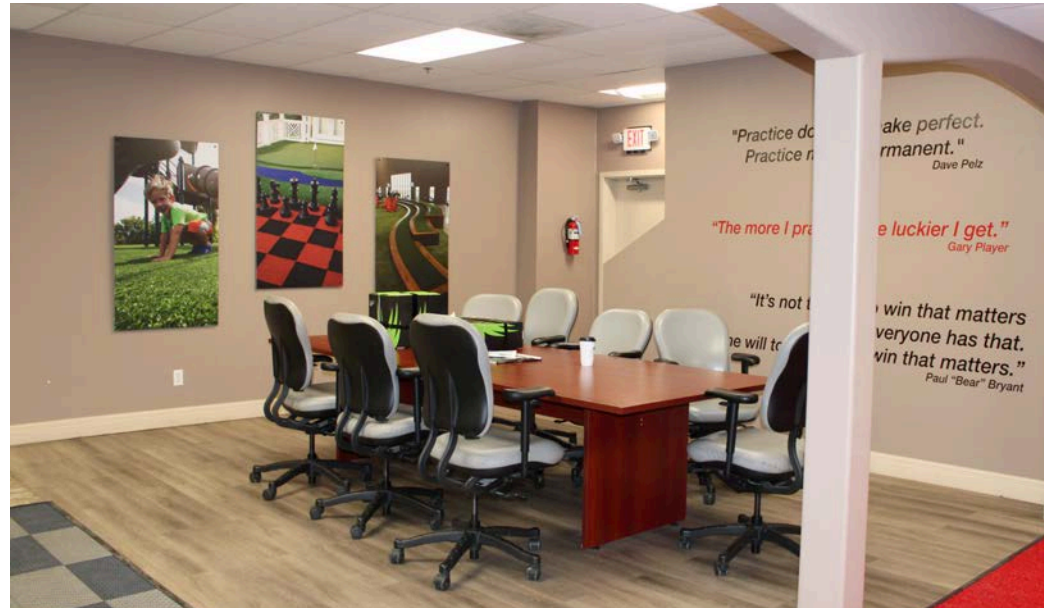
2ND FLOOR



***NOT DRAWN TO SCALE**

PROPERTY PHOTOS

1051 SE CENTURY DRIVE | LEE'S SUMMIT, MO



PROPERTY PHOTOS

1051 SE CENTURY DRIVE | LEE'S SUMMIT, MO

