

95 Caradoc Street S

STRATHROY | ONTARIO



FOR SALE | PRIME RETAIL DEVELOPMENT SITE

Rick Spencer**

Vice President

rick.spencer@cbre.com

D 519 286 2005

C 519 476 2002

Christina Shore*

Senior Sales Associate

christina.shore@cbre.com

D 519 286 2021

C 519 777 6342

**Broker, *Sales Representative

CBRE

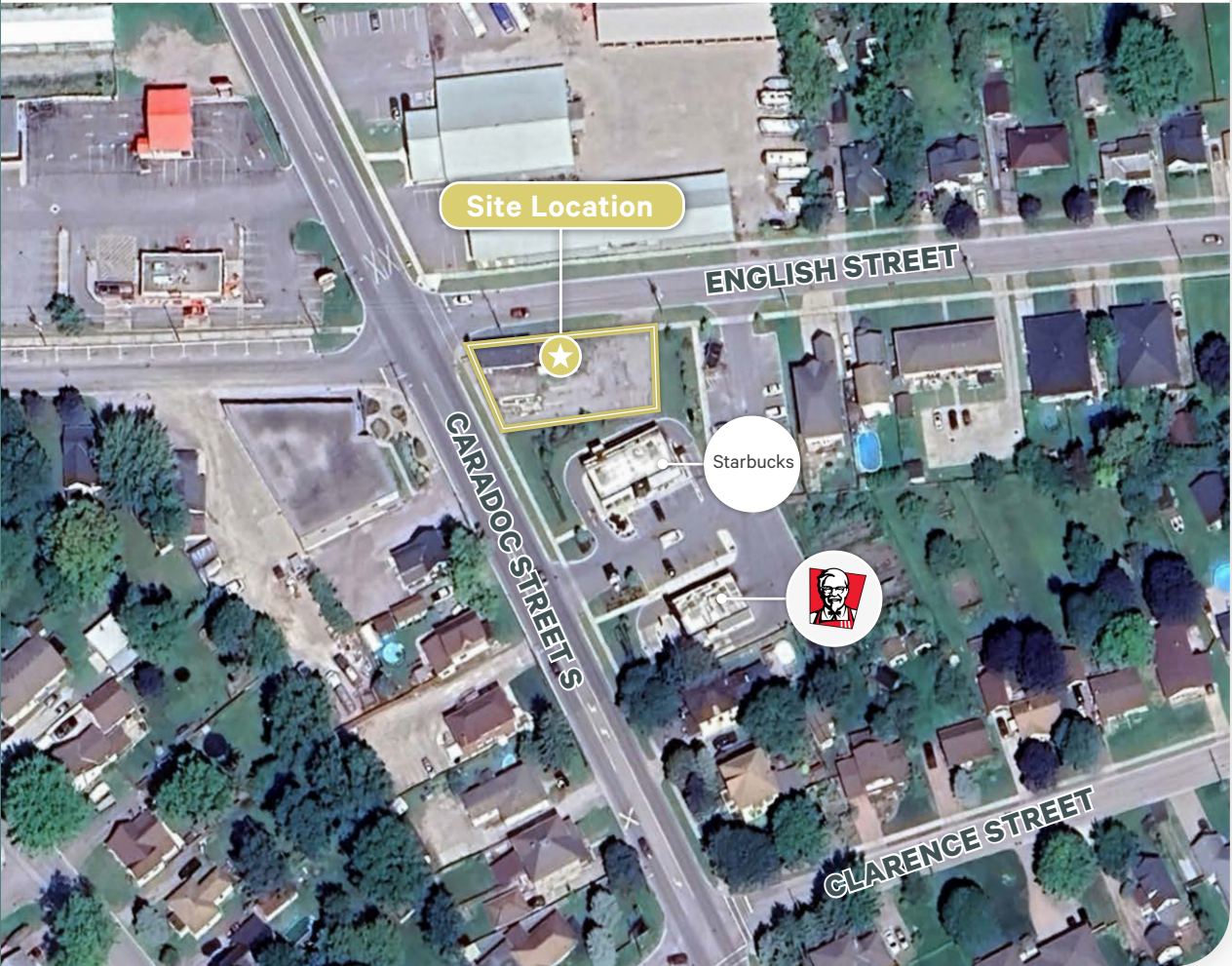
PROPERTY INFORMATION

PROPERTY DETAILS

Prime retail development site, located on the corner of Caradoc Street S and English Street directly adjacent to the Starbucks and KFC development.

SALE INFORMATION

| | |
|----------------|-----------------------------------|
| LOT SIZE | 0.198 Acres |
| FRONTAGE | 66.17 Feet along Caradoc Street S |
| ZONING | General Commercial 1 |
| PROPERTY TAXES | \$3,065.52 (2024) |
| SALE PRICE | Contact Listing Agent |



2024 DEMOGRAPHICS SNAPSHOT

WITHIN 5KM

POPULATION

20,917

CHANGE IN POPULATION (2019-2024)

17.3%

OF HOUSEHOLDS

8,056

AVERAGE HOUSEHOLD INCOME

\$93,507

ZONING INFORMATION

GENERAL COMMERCIAL 1

Permitted Uses:

- Arena/Hall
- Clinic
- Club
- Commercial Use
- Custom Workshop
- Day Care Centre
- Day Care Centre, Adult
- Dry Cleaning Establishment
- Dwelling, Apartment
- Dwelling Unit
- Financial Institution
- Funeral Home
- Hotel
- Laundry Establishment
- Office, Professional
- Personal Service Establishment
- Place of Entertainment
- Recreational Facility
- Restaurant
- Retail Store
- Retail Store, Antique
- Retail Store, Apparel & Accessories
- Recreation Facilities
- Personal Care Establishment
- Retail Store, Book & Music
- Retail Store, Brewing
- Retail Store, Arts & Crafts
- Retail Store, Duplication
- Retail Store, Florist
- Retail Store, Food
- Retail, General
- Retail Store, Gifts & Novelty
- Retail Store, Hardware
- Retail Store, Home Appliances
- Retail Store, Home Decoration
- Retail Store, Home Furnishings,
- Retail Store, Jewellery
- Retail Store, Large Format
- Retail Store, Liquor, Beer & Wine
- Retail Store, Pet
- Retail Store, Pharmacy
- Retail Store, Thrift / Charity
- Retail Store, Video Rental
- School, Commercial
- Shopping Centre
- Taxi Service
- Theatre / Cinema
- Veterinary Clinic

For more information, please contact:

Rick Spencer**

Vice President

rick.spencer@cbre.com

D 519 286 2005

C 519 476 2002

Christina Shore*

Senior Sales Associate

christina.shore@cbre.com

D 519 286 2021

C 519 777 6342

CBRE Limited, Brokerage | 380 Wellington Street | Suite 30 | London, ON N6A 5B5 | www.cbre.ca | **Broker, *Sales Representative

This disclaimer shall apply to CBRE Limited, Real Estate Brokerage, and to all other divisions of the Corporation; to include all employees and independent contractors ("CBRE"). The information set out herein, including, without limitation, any projections, images, opinions, assumptions and estimates obtained from third parties (the "Information") has not been verified by CBRE, and CBRE does not represent, warrant or guarantee the accuracy, correctness and completeness of the Information. CBRE does not accept or assume any responsibility or liability, direct or consequential, for the Information or the recipient's reliance upon the Information. The recipient of the Information should take such steps as the recipient may deem necessary to verify the Information prior to placing any reliance upon the Information. The Information may change and any property described in the Information may be withdrawn from the market at any time without notice or obligation to the recipient from CBRE. CBRE and the CBRE logo are the service marks of CBRE Limited and/or its affiliated or related companies in other countries. All other marks displayed on this document are the property of their respective owners. All Rights Reserved. Mapping Sources: Canadian Mapping Services canadamapping@cbre.com; DMTI Spatial, Environics Analytics, Google Earth

