

For Lease or Sale

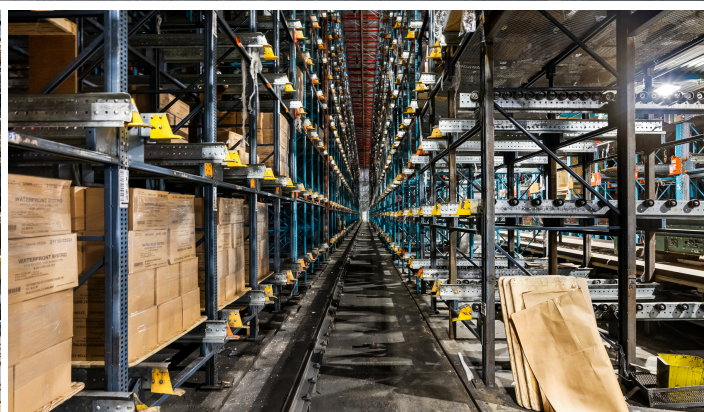
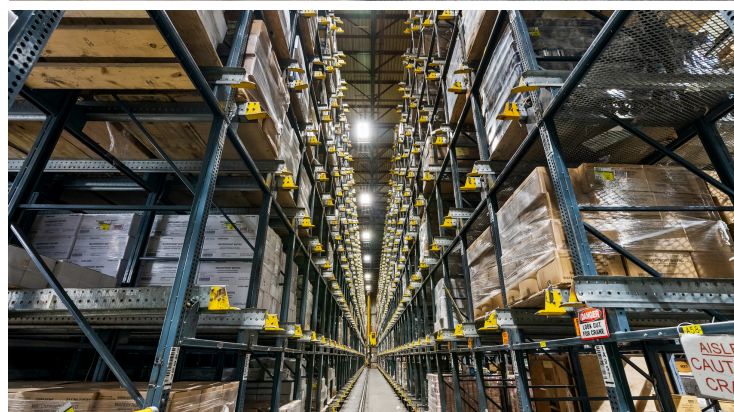
111 Reese Avenue
Harrington, DE 19952



Property Specifications

- Situated on 24.6 +/- Acres
- 220,973 SF
 - Hi Rise Freezer - 113,084 SF @ 48'
 - Conventional Freezer - 51,556 SF @ 31'
 - Dairy Freezer - 13,543 SF @ 31'
 - Remaining SF Dock, Office & Miscellaneous
- Tailgate Loading for Twenty-Five (25) Trucks
 - Rail Dock (Delmarva Central Railroad)
 - Refrigerated Docks
- 160 Surface Spaces
- Column Spacing 40' to 90' Spans
- Public Water & Sewer
- Power: 6,000 Amp, 480 Volt, 3 Phase
- More than 8mm Cubic Feet
- 30,027 Pallet Positions
- Sortation System
- 5 Stacker Cranes
- Masonry Construction
 - Built in 1973, rebuilt following fire in 1979, high rise & dock rebuilt in 1988, warehouse in 1991, freezer in 1995
 - Located Immediately off Route 13 - S. Dupont Hwy
 - Conveniently Located 90 Minutes from Philadelphia & Washington D.C. and 75 Minutes from Baltimore

111 Reese Ave
Harrington, DE 19952



Mitch Russell
mitch.russell@jll.com
(610) 249 2274

Tim O'Rourke
tim.orourke@jll.com
(310) 804 4438

Kevin Griffiths
kevin.griffiths@jll.com
(610) 955 7502

Although information has been obtained from sources deemed reliable, neither Owner nor JLL makes any guarantees, warranties or representations, express or implied, as to the completeness or accuracy as to the information contained herein. Any projections, opinions, assumptions or estimates used are for example only. There may be differences between projected and actual results, and those differences may be material. The Property may be withdrawn without notice. Neither Owner nor JLL accepts any liability for any loss or damage suffered by any party resulting from reliance on this information. If the recipient of this information has signed a confidentiality agreement regarding this matter, this information is subject to the terms of that agreement. © 2024 Jones Lang LaSalle IP, Inc. All rights reserved.