



Test Dr

±41,040 SF Available

137th Ave

For Lease **±41,040 SF**

13685 W. Test Drive, Goodyear

100%
AIR-CONDITIONED WAREHOUSE

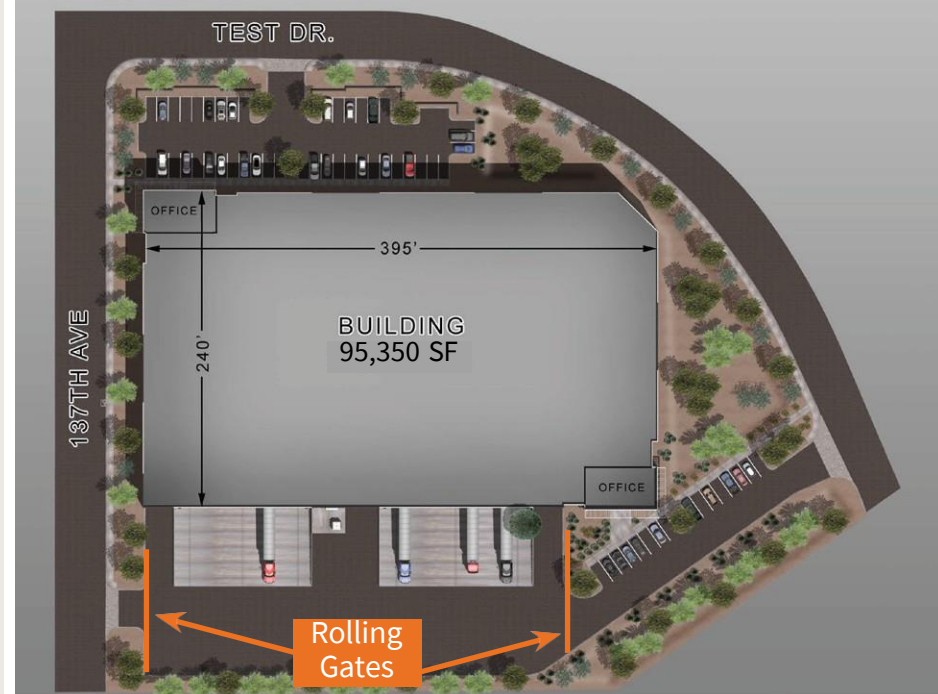


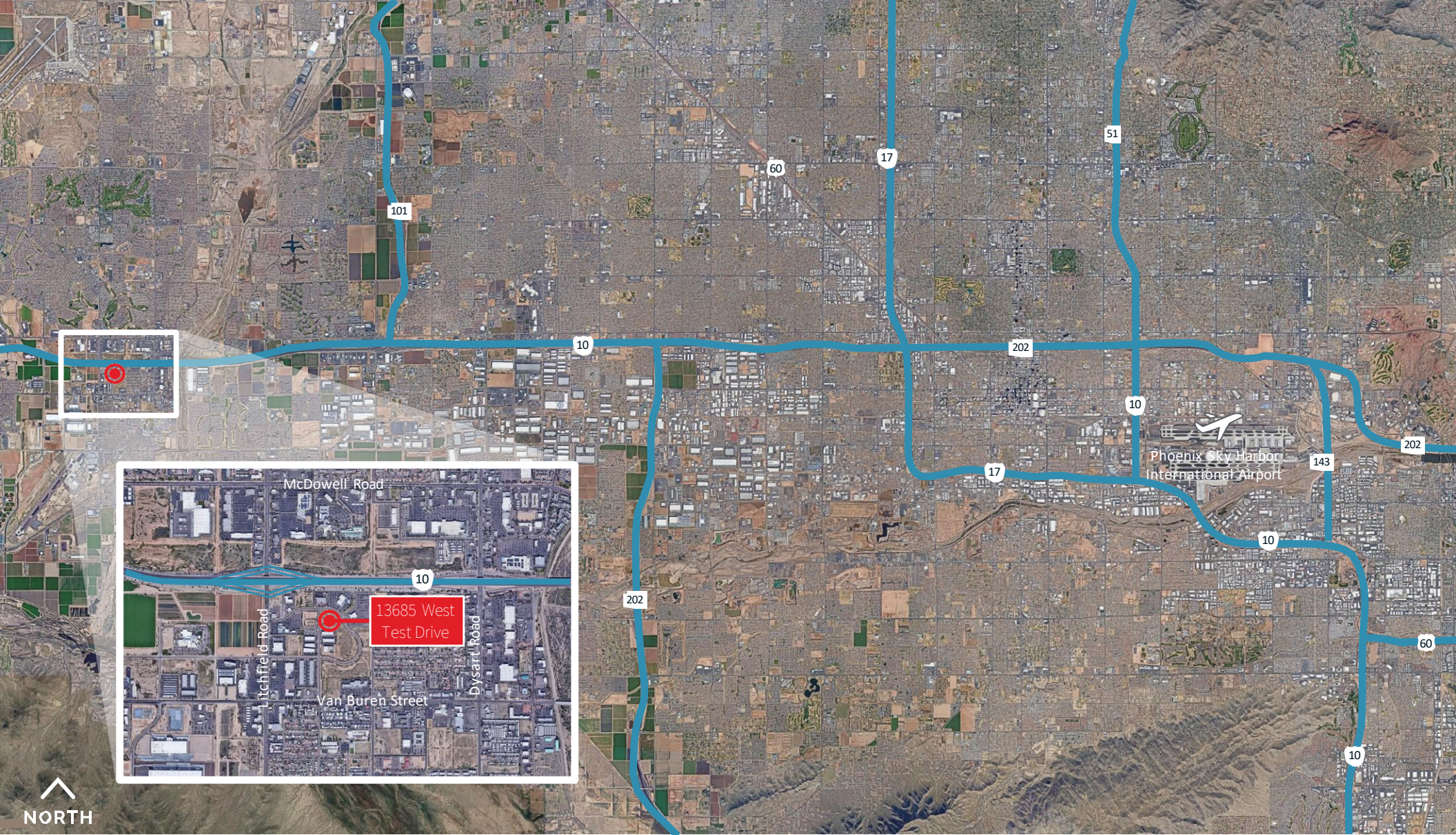
Jones Lang LaSalle Americas, Inc.
License #: C0508577000



Building highlights

- ± 95,350 SF building
- ±41,040 SF available
- ESFR sprinkler system
- ±1,500 SF spec office
- Air-conditioned warehouse
- PAD, City of Goodyear
- Column dimensions: 45' x 54'
- 25 car parking stalls
- 7 dock high doors with pit levelers
- 1 grade level door
- All doors sealed and electronic
- Two 20-ton AC units to the space
- Gated truck court
- 100% concrete truck court
- Approximately 0.4 miles to the Litchfield Road and I-10 Interchange
- Approximately 25 minutes to Phoenix Sky Harbor International Airport





For additional information:

Steve Sayre
Senior Managing Director
+1 602 999 7720
steve.sayre@jll.com



Although information has been obtained from sources deemed reliable, neither Owner nor JLL makes any guarantees, warranties or representations, express or implied, as to the completeness or accuracy as to the information contained herein. Any projections, opinions, assumptions or estimates used are for example only. There may be differences between projected and actual results, and those differences may be material. The Property may be withdrawn without notice. Neither Owner nor JLL accepts any liability for any loss or damage suffered by any party resulting from reliance on this information. If the recipient of this information has signed a confidentiality agreement regarding this matter, this information is subject to the terms of that agreement. ©2022 Jones Lang LaSalle IP, Inc. All rights reserved.