



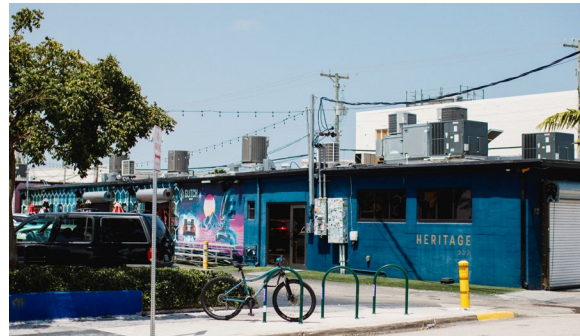
# flagler village

FORT LAUDERDALE



Flagler Village has graduated from a neglected warehouse district to one of the fastest-growing submarkets in the Miami-Fort Lauderdale-Palm Beach MSA, recognized for its budding art scene and unique dining experiences.

- With 6M+ residents, the Miami-Fort Lauderdale-Palm Beach MSA (aka “South Florida”) is home to 29% of the state’s total population
- Sitting just north of downtown Fort Lauderdale, Flagler Village enjoys direct access to Federal Highway and Sunrise Boulevard, giving way to beach days and breezy commutes to the airport, downtown, and the I-95
- The neighborhood’s Brightline Station offers direct connections to Miami, West Palm Beach, and Orlando
- Flagler Village is the city’s most walkable urban district featuring many of the top restaurants, cocktail and wine bars, and breweries, lending to its A+ Niche rating for nightlife
- Cultural draws include the Flagler Arts and Technology District (F.A.T. Village), the Music & Arts South of Sunrise (MASS) District, and the Flagler Art Walk, which happens on the last Saturday of every month
- The neighborhood is exploding with new commercial, residential, and retail development, with over 33 separate projects in the development pipeline in addition to the delivery of 6.3K+ multifamily units since 2014



### By the Numbers



**88**  
WALK SCORE



**67**  
TRANSIT SCORE



**38**  
MEDIAN AGE



**57%**  
EDUCATIONAL ATTAINMENT\*



**\$131,927**  
AVG HOUSEHOLD INCOME\*

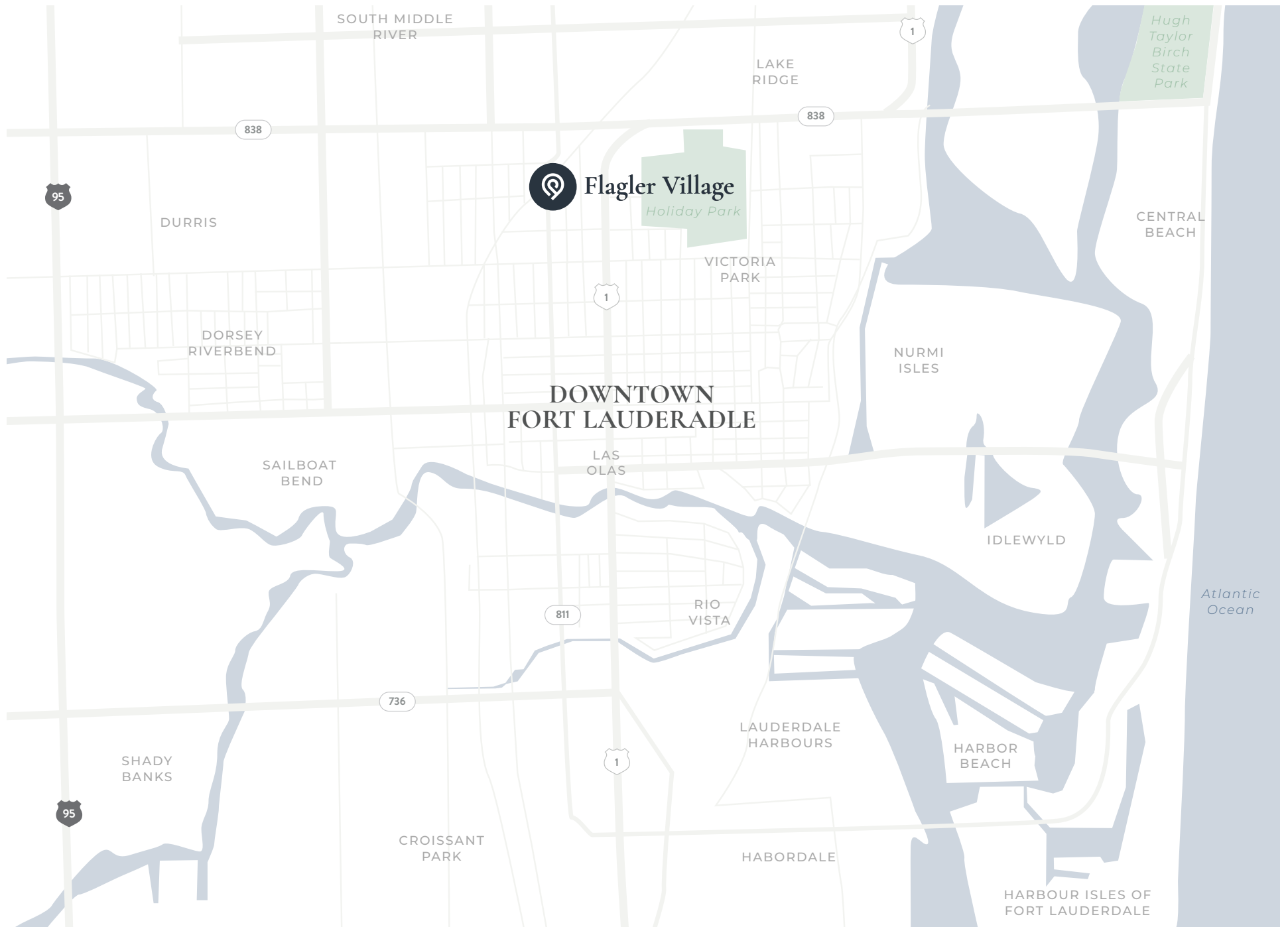


**33,292**  
POPULATION\*



**53,775 SF**  
TOTAL NEIGHBORHOOD GLA OWNED

\*(1-MILE)



# The Hive

900 N FLAGLER DR

AVAILABLE   LEASED   PARKING



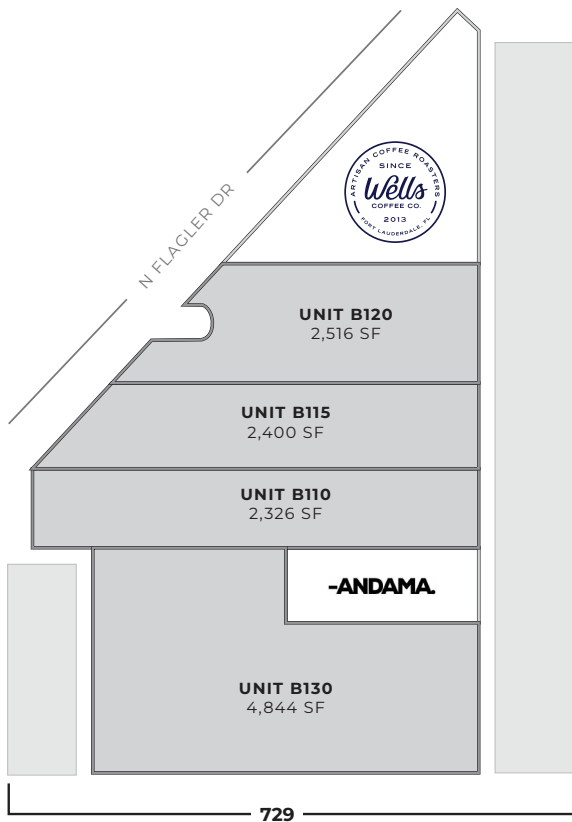
# Flagler Uptown

726 & 729 NE 2ND AVE

AVAILABLE

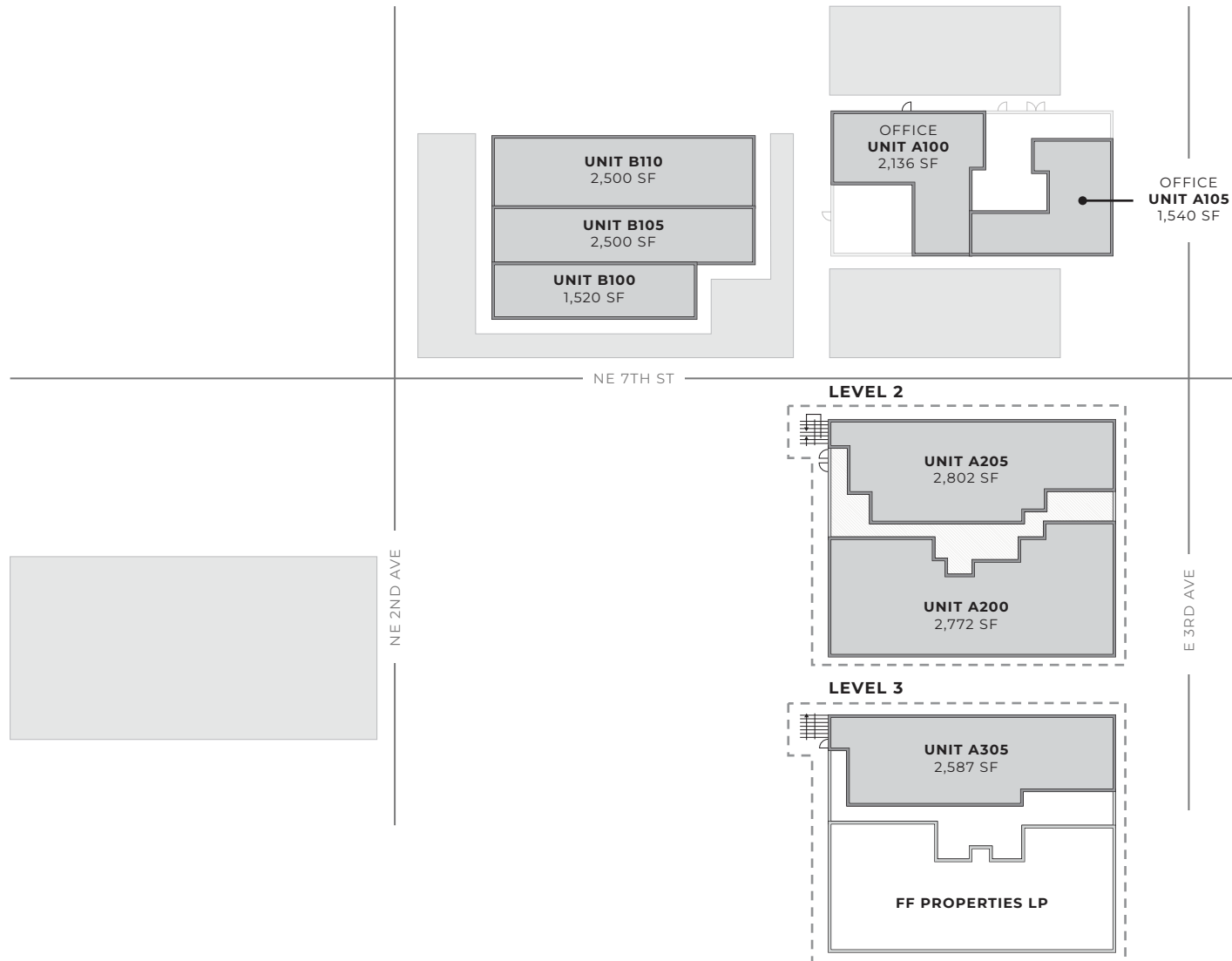
LEASED

PARKING



# 707 NE 3rd Ave

■ AVAILABLE    □ LEASED    ■ PARKING



## ASANA PARTNERS

---

Helen Williamson  
hwilliamson@asanapartners.com

Kim Vonada  
kvonada@asanapartners.com

## VERTICAL REAL ESTATE

---

Daniel Cardenas  
daniel@verticalremia.com

Michael Sullivan  
michael@verticalremia.com

Sam Singer  
sam@verticalremia.com

