

RETAIL/OFFICE SPACE FOR LEASE



PAVILION PLAZA

2168 Diamond Hill Road, Woonsocket, RI 02895

DAN FEINER

Vice President
401.751.3200 x310
dan@mgcommercial.com

MICHAEL VOLPE

Vice President
401.751.3200 x306
michael@mgcommercial.com

MG COMMERCIAL

365 Eddy Street, Penthouse Suite
Providence, RI 02903
401.751.3200 | mgcommercial.com

EXECUTIVE SUMMARY



PROPERTY DESCRIPTION

38,468 square foot mixed-use retail/office complex. The complex is made up of 4 similar buildings with store front parking for all tenants, and ample parking surrounding all of the buildings. Pylon signage at the front entry.

PROPERTY HIGHLIGHTS

- Ample parking at the door of each tenant
- Well maintained grounds
- Parking of almost 5 per 1,000'

DEMOGRAPHICS	3 MILES	5 MILES	10 MILES
Total Households	17,824	42,730	126,846
Total Population	45,762	109,636	339,803
Daytime Population	20,218	35,025	139,226
Average HH Income	\$63,999	\$69,613	\$81,919

LOCATION DESCRIPTION

Located on Diamond Hill Road in Woonsocket, RI along the Massachusetts / Rhode Island State border. This part of Diamond Hill Road is a heavy commercial section between the Cumberland, RI town line and the Mendon Road intersection. Among other amenities in the area, there is a heavy food presence. Some of these retailers include Applebee's, Little Caesars, Popeye's, Dunkin, Taco Bell and McDonalds among others.

OFFERING SUMMARY

Building Size:	38,468 SF
Lot Size:	3.71 Acres
Lease Rate:	negotiable
Available SF:	2,500 - 10,000 SF
Parking:	177 Spaces
Zoning:	C2

DAN FEINER

Vice President
401.751.3200 x310
dan@mgcommercial.com

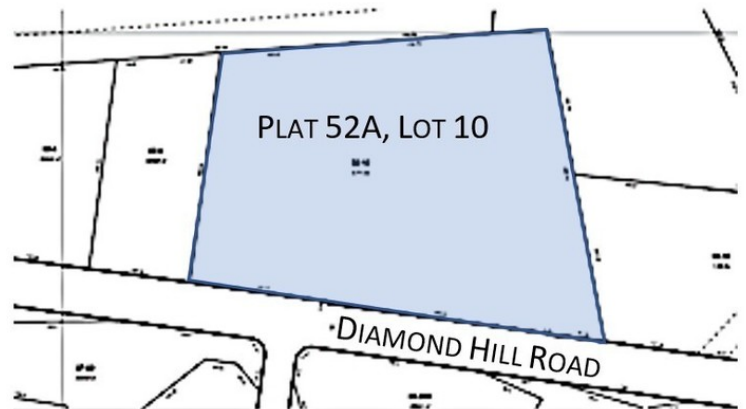
MICHAEL VOLPE

Vice President
401.751.3200 x306
michael@mgcommercial.com

365 Eddy Street, Penthouse Suite
Providence, RI 02903
mgcommercial.com



ADDITIONAL PHOTOS



DAN FEINER

Vice President
401.751.3200 x310
dan@mgcommercial.com

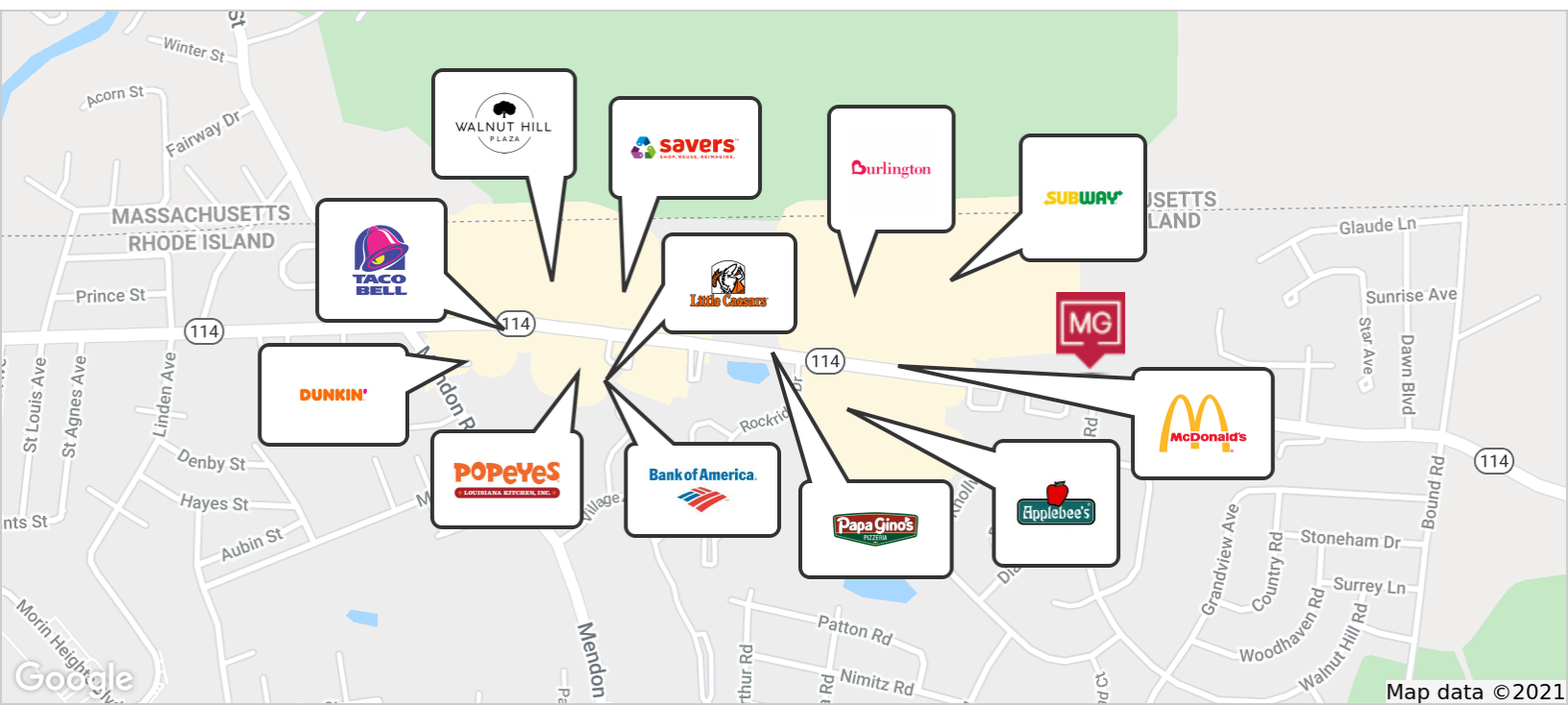
MICHAEL VOLPE

Vice President
401.751.3200 x306
michael@mgcommercial.com

365 Eddy Street, Penthouse Suite
Providence, RI 02903
mgcommercial.com



LOCATION MAPS



DAN FEINER
Vice President
401.751.3200 x310
dan@mgcommercial.com

MICHAEL VOLPE
Vice President
401.751.3200 x306
michael@mgcommercial.com

365 Eddy Street, Penthouse Suite
Providence, RI 02903
mgcommercial.com

