

INDUSTRIAL PARK LAUDERHILL

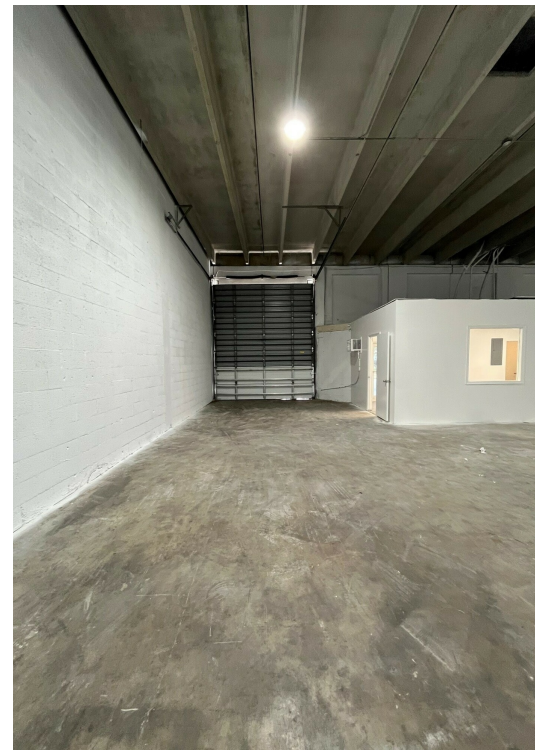
3700-3798 NW 16TH STREET, LAUDERHILL, FL 33311

3786-3790 NW 16TH STREET



SPACE HIGHLIGHTS

- Newly renovated multi-bay warehouse
- Total space is 4,590 sf
- Can be subdivided into 3,060 sf or 1,530 sf.
- Total space includes 3 air-conditioned offices, 3 grade level 12' x 14' overhead doors
- LED lighting
- Hurricane impact doors
- 3 phase power
- 18' ceiling clear in warehouse
- Ample parking
- Matterport virtual tour at <https://bit.ly/IPL3786>
- \$20 base rent PSF/Yr.



ANGIE WEAVER

Lauderdale Lakes and Lauderhill Manager
Direct: 954.485.9200 | Cell: 917.645.2339
angie@levyrai.com

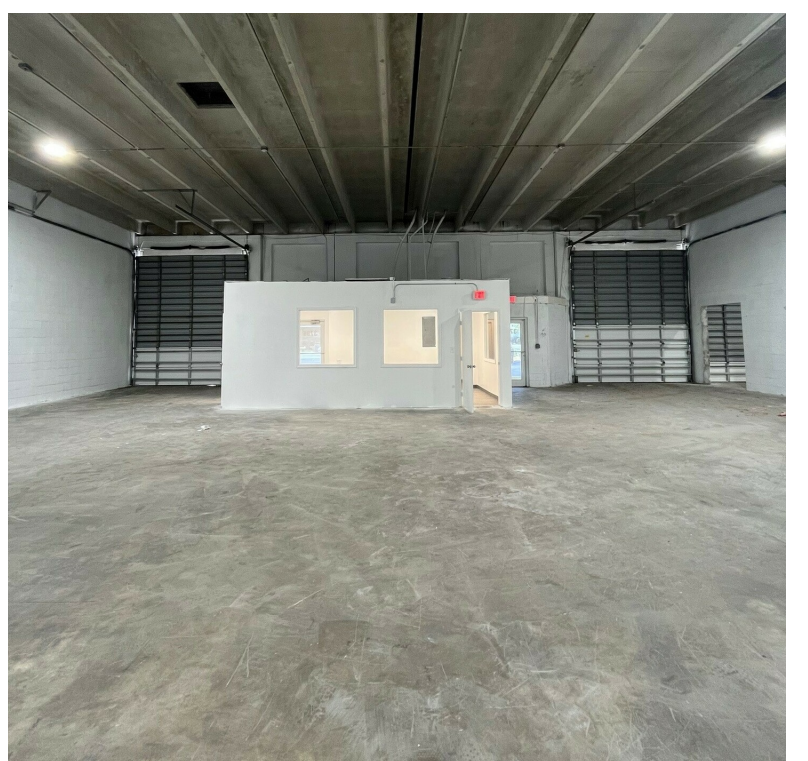
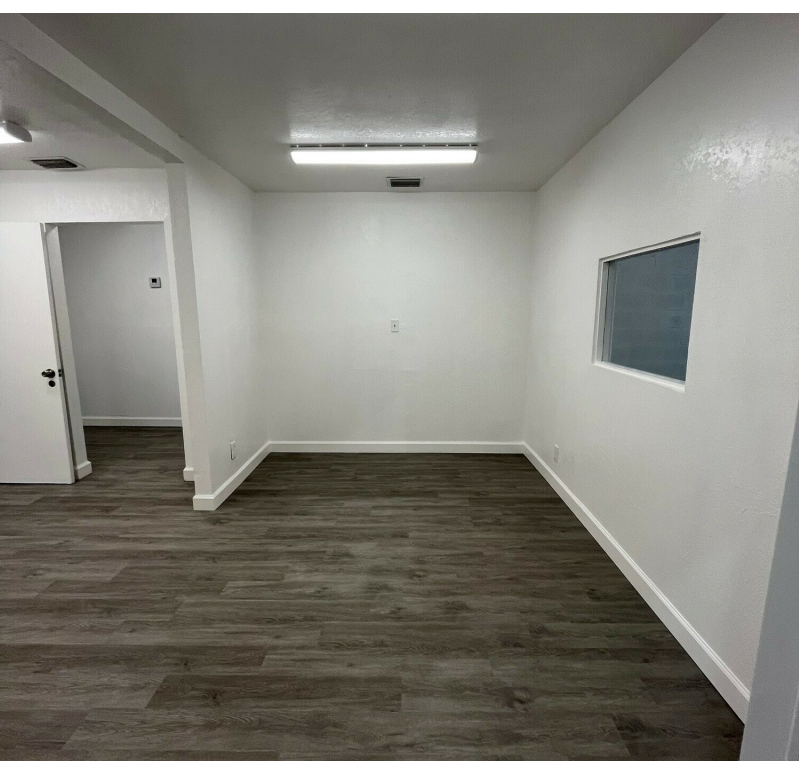
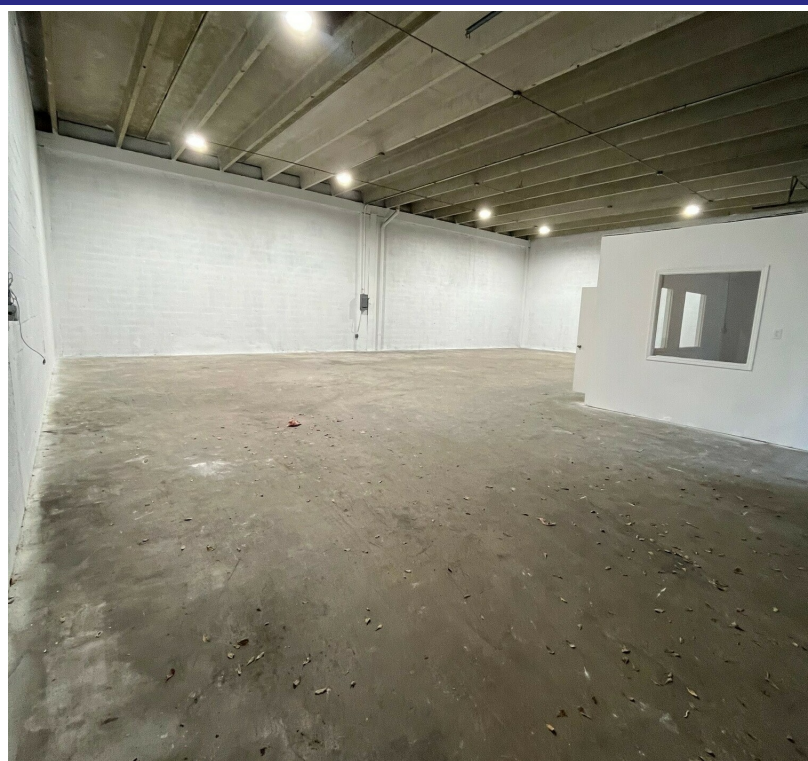


FOR LEASE

INDUSTRIAL PARK LAUDERHILL

3700-3798 NW 16TH STREET, LAUDERHILL, FL 33311

ADDITIONAL PHOTOS



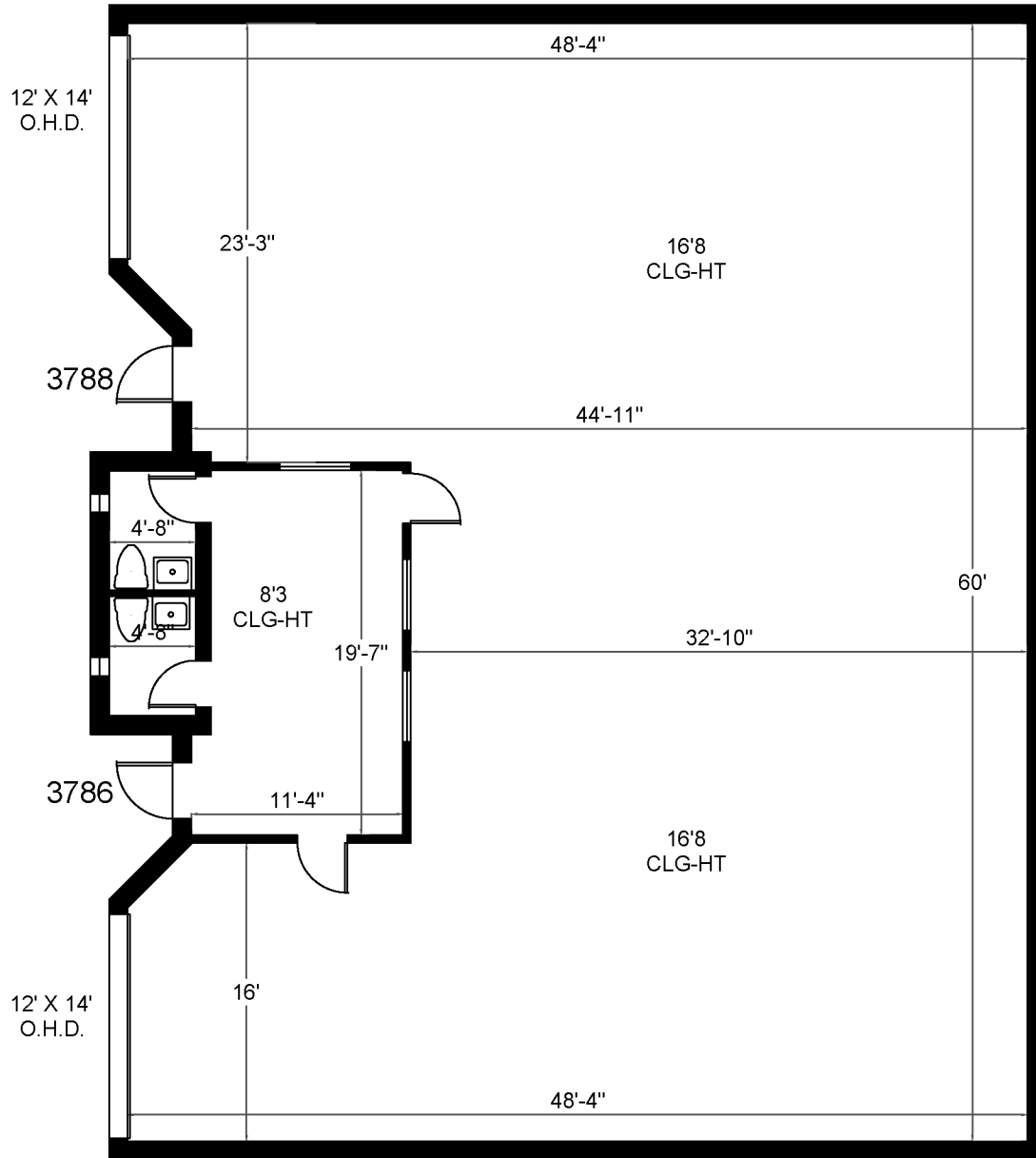
ANGIE WEAVER

Lauderdale Lakes and Lauderhill Manager
Direct: 954.485.9200 | Cell: 917.645.2339
angie@levyrai.com



INDUSTRIAL PARK LAUDERHILL

3786-3788 NW 16th Street | Lauderhill, FL 33311



Office - 329 Sq. Ft.

3,060 Rentable Sq. Ft.

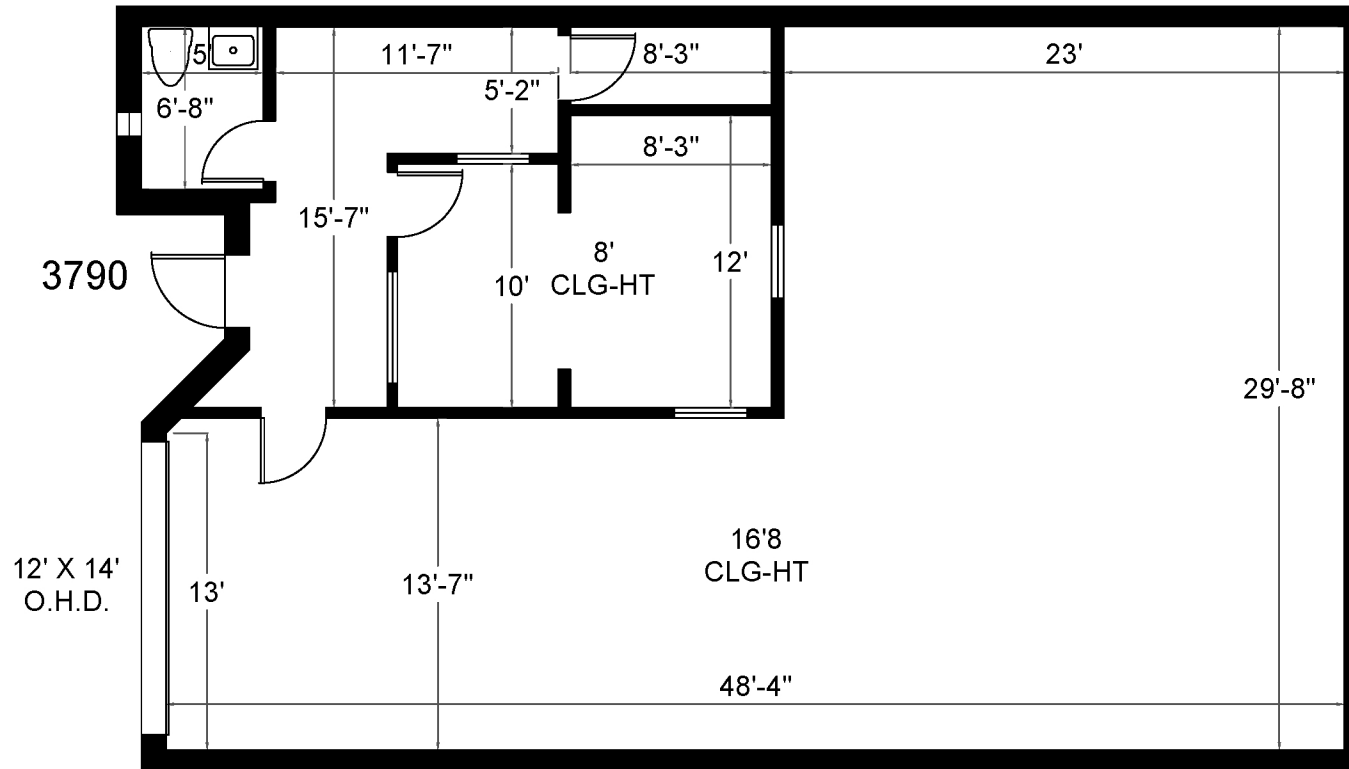
www.LevyRealtyAdvisors.com



Angie Weaver | Property Manager | 917.645.2339 | Angie@levyrai.com
4901 NW 17th Way, Suite 103 | Ft. Lauderdale, FL 33309

LAUDERHILL INDUSTRIAL PARK

3790 NW 16th Street | Lauderhill, FL 33311



Office - 426 SQ.FT.
Warehouse - 1,104 SQ.FT.



Angie Weaver | Broker / Property Manager | 917.645.2339 | Angie@levyai.com
4901 NW 17th Way, Suite 103 | Ft. Lauderdale, FL 33309

1,530 Rentable SQ. FT.
www.LevyRealtyAdvisors.com