

1995

SWARTHMORE AVENUE
LAKEWOOD | NEW JERSEY



INDUSTRIAL WAREHOUSE FOR LEASE

1995

SWARTHMORE AVENUE LAKEWOOD | NEW JERSEY

1995 Swarthmore Avenue offers an excellent industrial lease opportunity in the heart of Lakewood's thriving commercial corridor.

Positioned within a well-established industrial hub, the property provides convenient access for a range of light industrial, storage, or distribution uses.

Strategically located, the site benefits from direct frontage on Swarthmore Avenue and close connectivity to New Hampshire Avenue, Route 70, and Route 9. Regional logistics are further supported by easy access to the Garden State Parkway, enabling efficient distribution throughout Ocean County and the broader New Jersey market. This prime positioning ensures both local and regional reach, making it a versatile base for growing operations.

PROPERTY OVERVIEW

Property Type	Industrial Warehouse
Space A	7,100 SF
Space B	2,900 SF
Ceiling Heights	20' - 22'
Possession	Immediate

ASKING RENT: UPON REQUEST

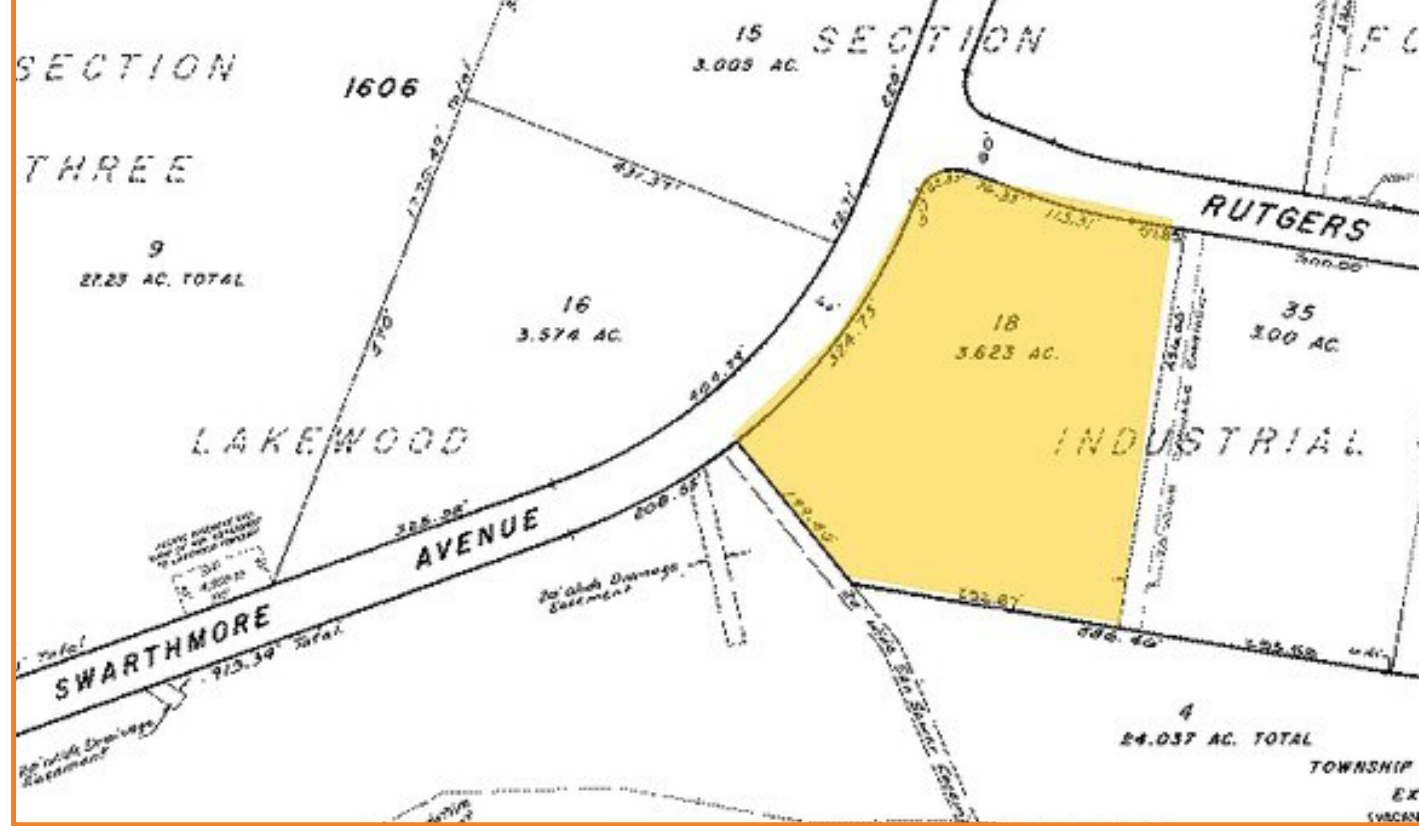


1995

SWARTHMORE AVENUE
LAKEWOOD | NEW JERSEY

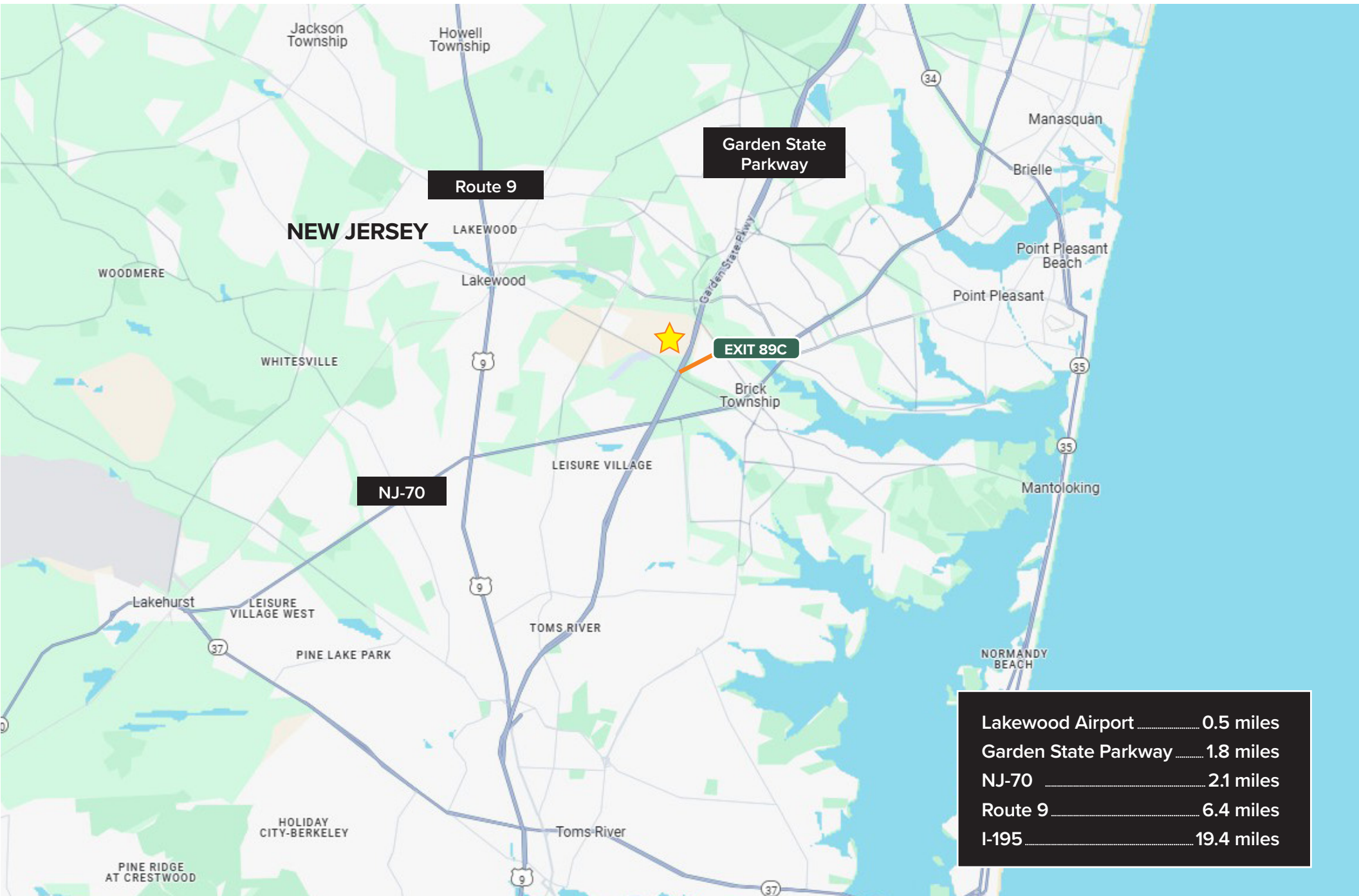
ADDITIONAL INFO

- 3 Drive-ins
- 2 Loading docks
- Each space has around 1,000 SF of Mezzanine
- 2 Showers
- Spaces can be combined into one 10,000 SF space



1995 SWARTHMORE AVENUE | LAKEWOOD, NJ

FOR LEASE



FOR MORE INFORMATION,
PLEASE CONTACT:

MARC ESSES

M: 646.831.2167

E: MEsses@Ksrny.com

EMIL SHABOT

M: 917.669.4493

E: EShabot@Ksrny.com

YANKE CHAIMOWITZ

M: 732.503.3820

E: YChaimowitz@Ksrny.com

JACK ZALTA

M: 347.256.9281

E: JZalta@Ksrny.com



1385 Broadway, 22nd Floor
New York, NY 10018
212.417.9217
ksrny.com

All information supplied in this marketing presentation and/or flyer is from sources deemed reliable and is furnished subject to errors, omissions, modifications, removal of listings from sale/lease and to any listing condition. Any square footage, dimensions, floor plans and/or technical data set forth are approximations and are subject to further elaboration/confirmation.