

# Northern Passage

# Office Space For Lease

3302 Fuhrman Ave E, Seattle WA 98102



**KAMALOR**  
COMMERCIAL REAL ESTATE  
206.656.7700

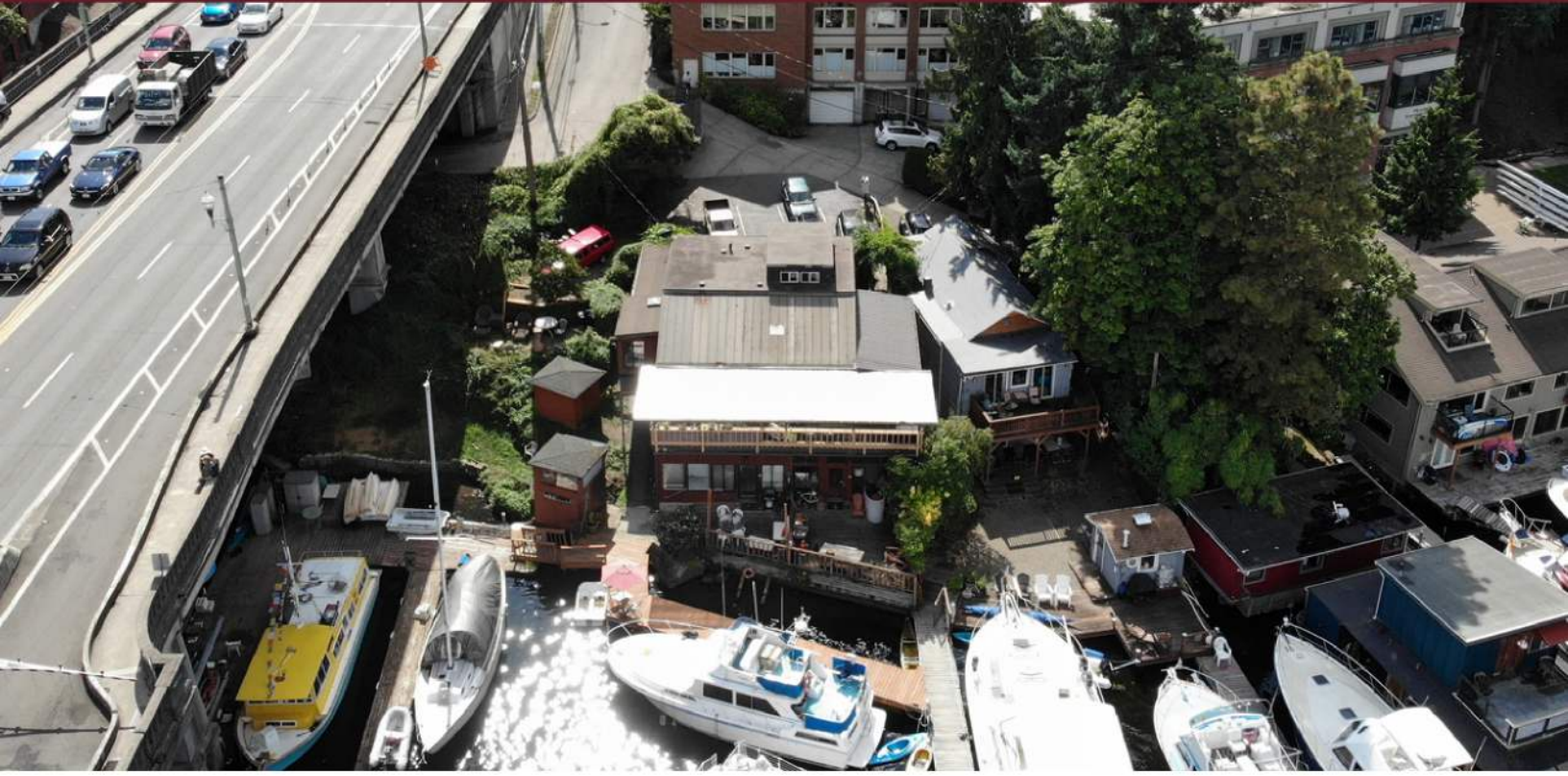
Brad Decker  
206.656.7200  
Brad@Kamalor.com

Christian Decker, CCIM  
206.656.7300  
Brad@Kamalor.com

# Northern Passage

# Office Space For Lease

3302 Fuhrman Ave E, Seattle WA 98102



**KAMALOR**  
COMMERCIAL REAL ESTATE  
206.656.7700

Brad Decker  
206.656.7200  
Brad@Kamalor.com

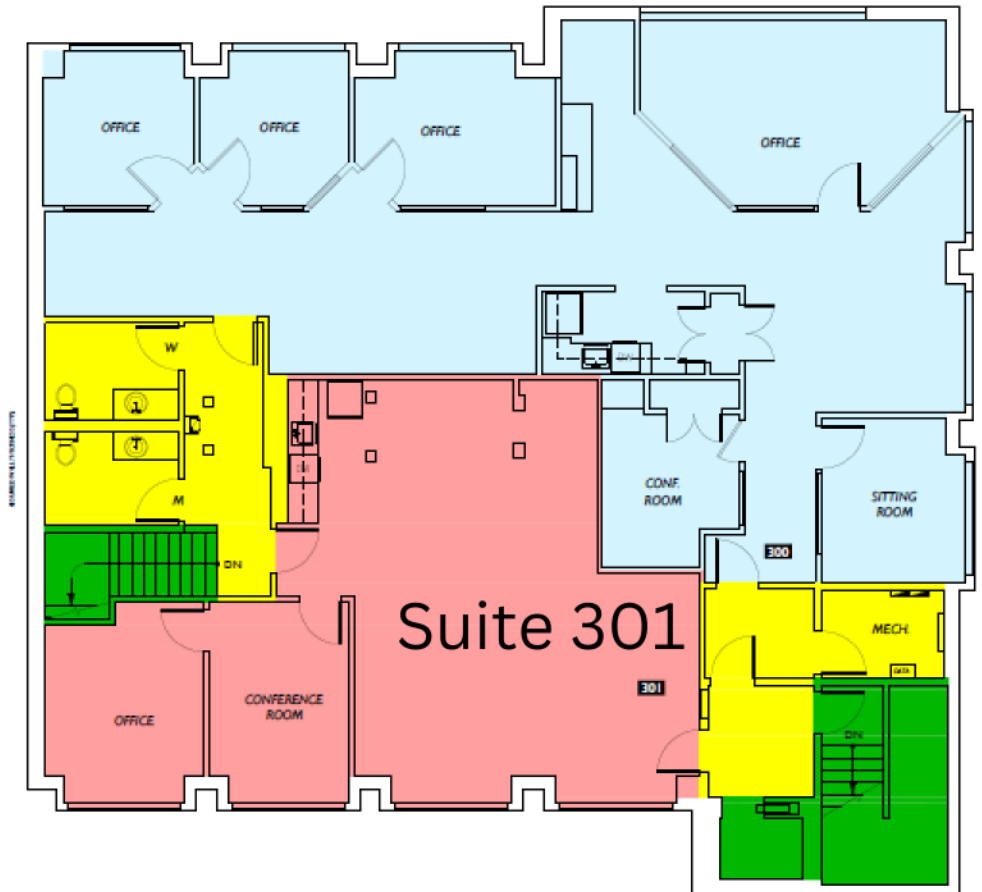
Christian Decker, CCIM  
206.656.7300  
Brad@Kamalor.com

# Northern Passage

# Office Space For Lease

3302 Fuhrman Ave E, Seattle WA 98102

**Suite 301**  
**1,338 RSF**



**KAMALOR**  
COMMERCIAL REAL ESTATE  
206.656.7700

Brad Decker  
206.656.7200  
Brad@Kamalor.com

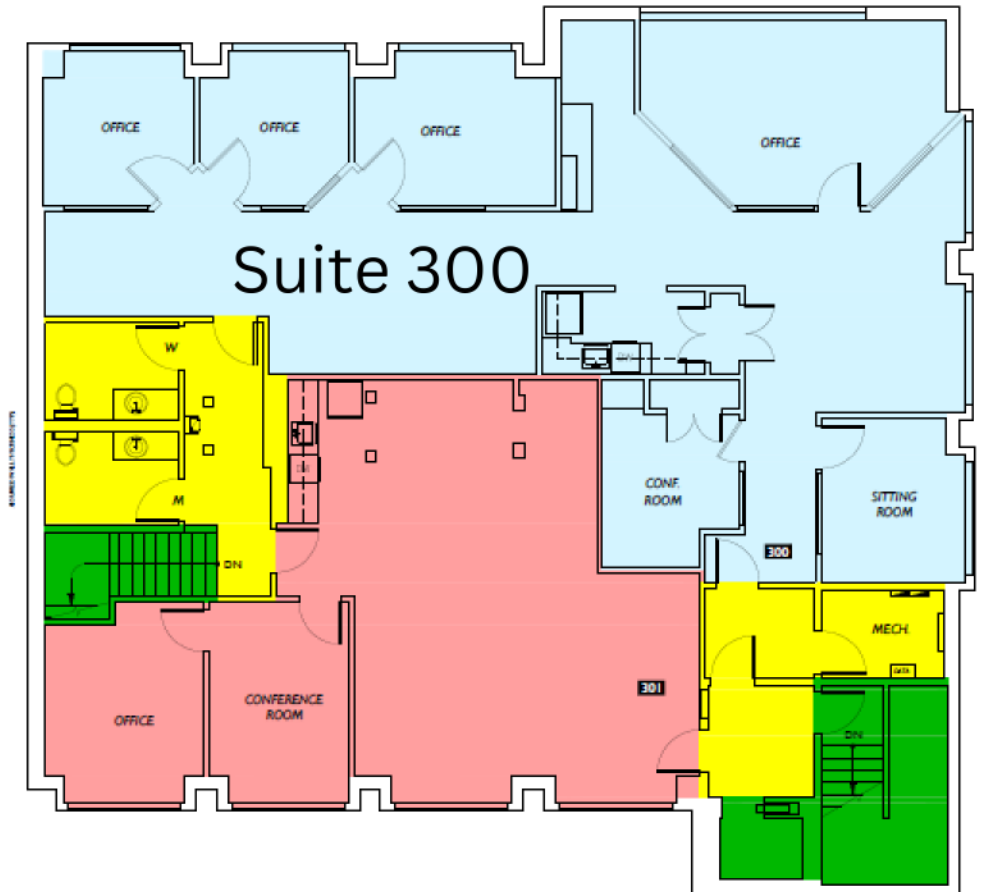
Christian Decker, CCIM  
206.656.7300  
Brad@Kamalor.com

# Northern Passage

# Office Space For Lease

3302 Fuhrman Ave E, Seattle WA 98102

**Suite 300**  
**2,459 RSF**



**KAMALOR**  
COMMERCIAL REAL ESTATE  
206.656.7700

Brad Decker  
206.656.7200  
Brad@Kamalor.com

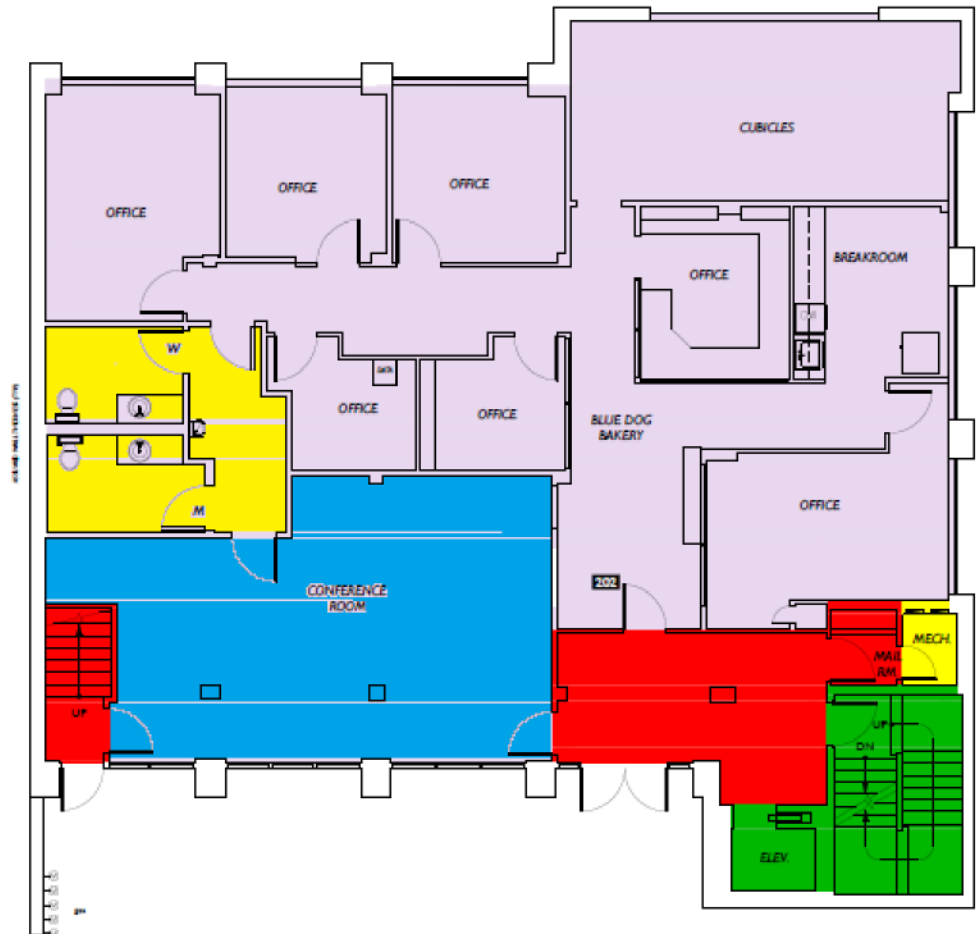
Christian Decker, CCIM  
206.656.7300  
Brad@Kamalor.com

# Northern Passage

# Office Space For Lease

3302 Fuhrman Ave E, Seattle WA 98102

**Suite 201&202**  
**684-3,224 RSF**  
Can be Divided



**KAMALOR**  
COMMERCIAL REAL ESTATE  
206.656.7700

Brad Decker  
206.656.7200  
Brad@Kamalor.com

Christian Decker, CCIM  
206.656.7300  
Brad@Kamalor.com

# Northern Passage

# Office Space For Lease

3302 Fuhrman Ave E, Seattle WA 98102



**KAMALOR**  
COMMERCIAL REAL ESTATE  
206.656.7700

Brad Decker  
206.656.7200  
Brad@Kamalor.com

Christian Decker, CCIM  
206.656.7300  
Brad@Kamalor.com