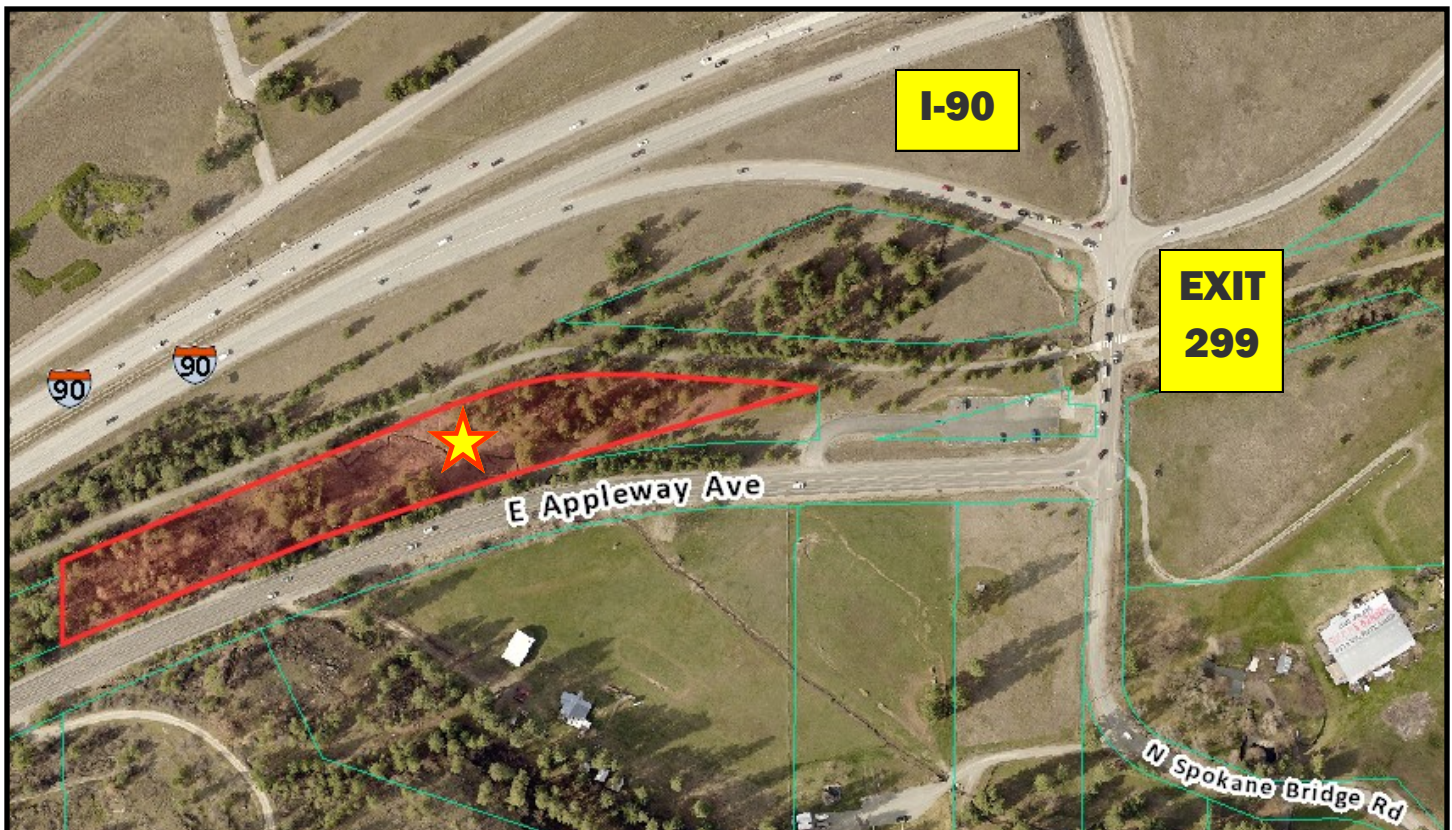


***WA / ID Stateline I-90  
Acreage Opportunity (3.08 Acres)***



***Located at the Washington and Idaho Stateline Border  
off I-90 Exit 299 (Spokane Bridge Road)***



**GENE ARGER, BROKER | G. ARGER CO. REAL ESTATE INC**

(509) 926-5311 office | (509) 844-8814 cell | [ggarger@argerco.com](mailto:ggarger@argerco.com) | [www.argerco.com](http://www.argerco.com)

# SUMMARY



## Sales Price \$475,000.00

- Parcel #: 55015.9037
- Lot 134,164.80 +/- Square Feet
- 3.08 +/- Acres
- Zoning: Rural Conservation (RCV). Allowed Permitted Uses per Spokane County include: Residential Dwelling, Duplex, Electric Vehicle Infrastructure, Commercial Greenhouse, Private Storage Structure, Animal Health Services and Church
- Located at the WA/ID Border situated between growing Cities Liberty Lake, WA and Post Falls, ID
- Fronting I-90 with Easy Access (Spokane Bridge Road, Exit 299)
- Fronts the Centennial Trail
- Near Rest Area and Weight Station
- Highly Visible
- Utilities at Street
- Existing Survey

WA / ID Stateline I-90 Acreage

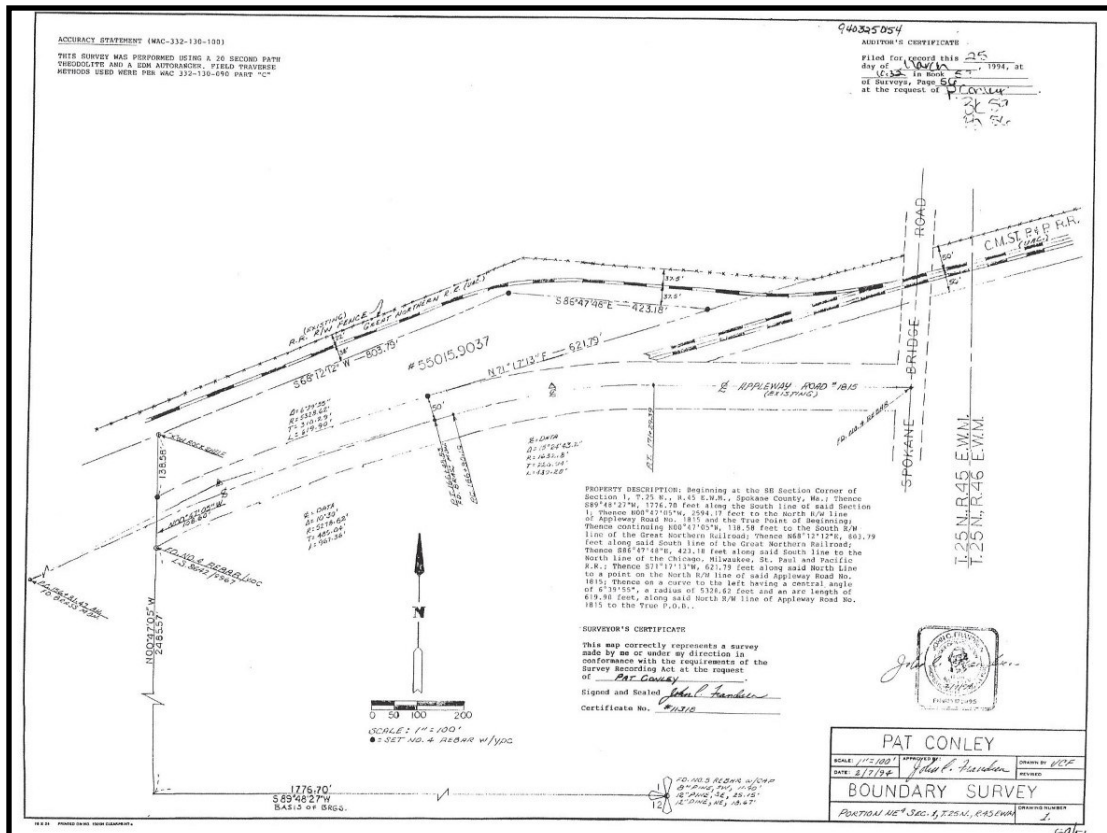


**GENE ARGER, BROKER | G. ARGER CO. REAL ESTATE INC**

(509) 926-5311 office | (509) 844-8814 cell | [ggarger@argерco.com](mailto:ggarger@argерco.com) | [www.argерco.com](http://www.argерco.com)



# MAP & SURVEY



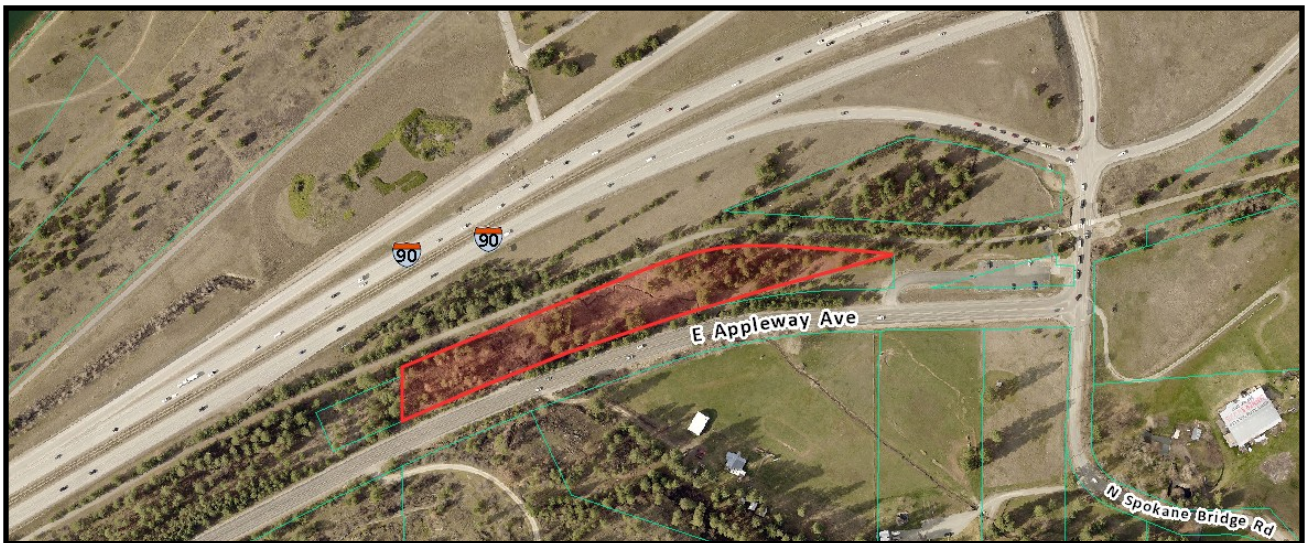
WA / ID Stateline I-90 Acreage



**GENE ARGER, BROKER | G. ARGER CO. REAL ESTATE INC**

(509) 926-5311 office | (509) 844-8814 cell | ggarger@argerco.com | www.argerco.com

# PICTURE GALLERY



WA / ID Stateline I-90 Acreage

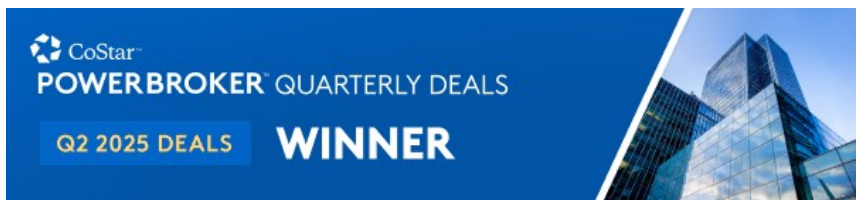


**GENE ARGER, BROKER | G. ARGER CO. REAL ESTATE INC**

(509) 926-5311 office | (509) 844-8814 cell | [ggarger@argerco.com](mailto:ggarger@argerco.com) | [www.argerco.com](http://www.argerco.com)



# ABOUT US



For over **40 years** **G. ARGER CO. REAL ESTATE INC.**, has been meeting the real estate needs of hundreds of companies across the Inland Northwest and are award winning Power Broker Producers.

We offer services in commercial property sales, residential property sales, property management and landlord/tenant commercial leasing representation. Our development division specializes in build to suit as well as complete start to finish design/construct projects.

G. Arger Company is a full-service company that can handle all of your real estate buying, selling, leasing and development needs.



**G. ARGER CO. REAL ESTATE INC**  
**GENE ARGER, BROKER**

(509) 926-5311 office  
(509) 844-8814 cell  
ggarger@argerco.com  
www.argerco.com



Property information on this flyer is for convenience only and should not be relied upon for accuracy.  
All prospective buyers should conduct their own analysis and inspections for their intended use.