

FOR SALE/LEASE

TURN-KEY AUTO DEALERSHIP

2240 E OLD LINCOLN HIGHWAY | LANGHORNE, PA

JOIN AREA TENANTS

CARMAX  **TOYOTA**

 **KIA** **Jeep**

GMC **NISSAN**

PROPERTY OVERVIEW

2240 E OLD LINCOLN HIGHWAY | LANGHORNE, PA

NATHAN RHODES
nathan.r@tristatecr.com
215.300.9688

STEVE JEFFRIES
steve.j@tristatecr.com
215.300.9688

TRISTATECR.COM



PROPERTY HIGHLIGHTS

- Rare turn-key auto dealership and service center for sale/lease
- Highly visible corner lot with signage exposure on the coveted Automotive Row with 22,000 ADT
- State of the art independent dealership with recently renovated building envelope, mechanicals and finishes
- Distance to I-95/I-295: 1.7 Miles
- Distance to PA Turnpike (276): 8.3 Miles
- Distance to NJ Turnpike: 17.3 Miles

PROPERTY DETAILS

Location:	Langhorne, Bucks County
Zoning:	GB (General Business District)
Municipality:	Middletown Township
Lot Size:	1.81 Acres
Building Size	+/- 4,000 SF
Parking:	250+ Spaces
Drive-in Bays:	3
Utilities:	Public
APN:	22-040-040, 22-040-029-001
TAXES	
County Tax:	\$3,283
Municipal Tax:	\$2,275
School Tax:	\$21,728

NEIGHBORING TENANTS



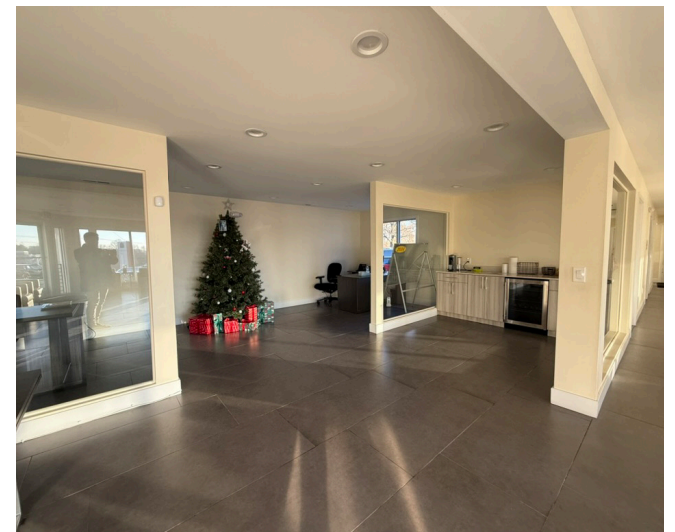
PROPERTY IMAGES

2240 E OLD LINCOLN HIGHWAY | LANGHORNE, PA

NATHAN RHODES
nathan.r@tristatecr.com
215.300.9688

STEVE JEFFRIES
steve.j@tristatecr.com
215.300.9688

TRISTATECR.COM



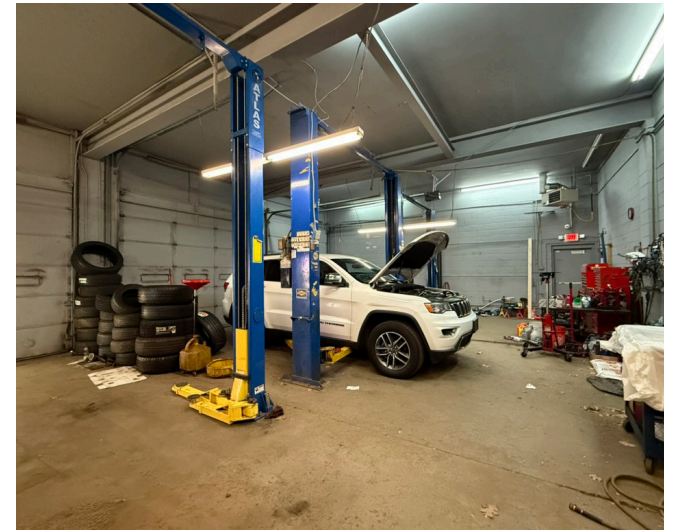
PROPERTY IMAGES

2240 E OLD LINCOLN HIGHWAY | LANGHORNE, PA

NATHAN RHODES
nathan.r@tristatecr.com
215.300.9688

STEVE JEFFRIES
steve.j@tristatecr.com
215.300.9688

TRISTATECR.COM



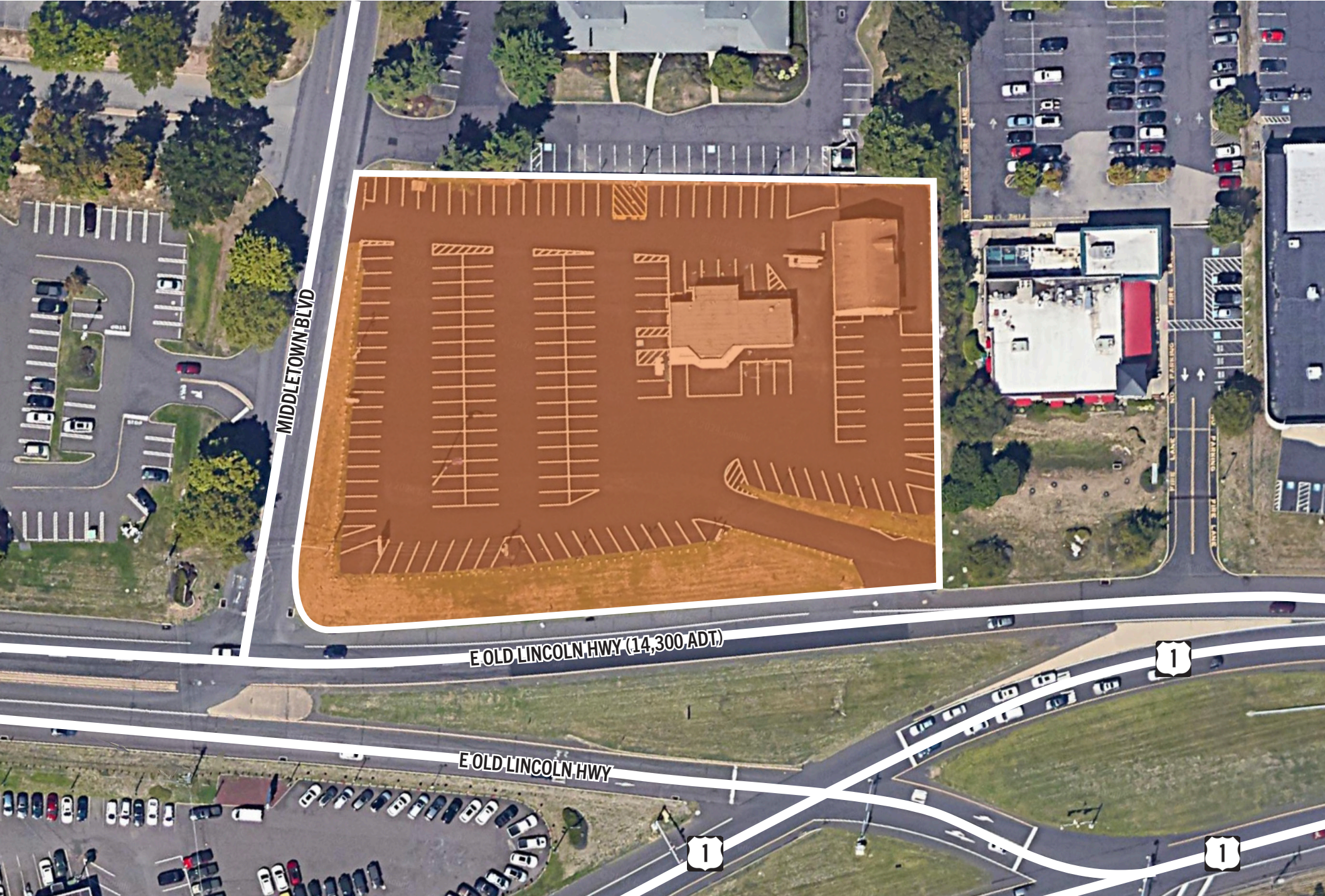
AERIAL OVERVIEW

2240 E OLD LINCOLN HIGHWAY | LANGHORNE, PA

NATHAN RHODES
nathan.r@tristatecr.com
215.300.9688

STEVE JEFFRIES
steve.j@tristatecr.com
215.300.9688

TRISTATECR.COM 



MIDDLETOWN BLVD

E OLD LINCOLN HWY (14,300 ADT)

E OLD LINCOLN HWY



DEALERSHIP & COLLISION CENTER AERIAL

2240 E OLD LINCOLN HIGHWAY | LANGHORNE, PA

NATHAN RHODES
nathan.r@tristatecr.com
215.300.9688

STEVE JEFFRIES
steve.j@tristatecr.com
215.300.9688

TRISTATECR.COM

