

COMMERCIAL DEVELOPMENT SITE – PERRY, GA

**PERRY PARKWAY @ HIGHWAY 41
PERRY, GA 31069
HOUSTON COUNTY**

±6.28 ACRES

**ASKING PRICE:
\$350,000 PER ACRE**

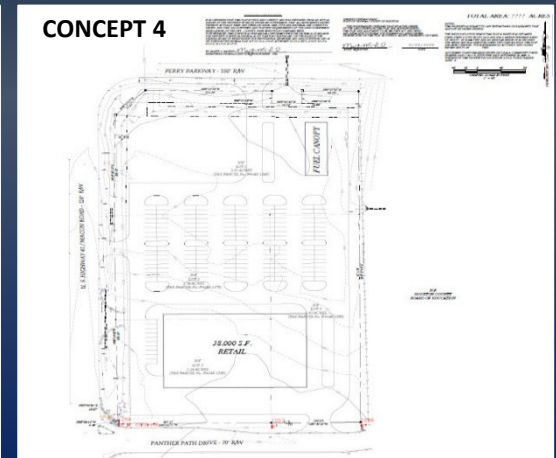
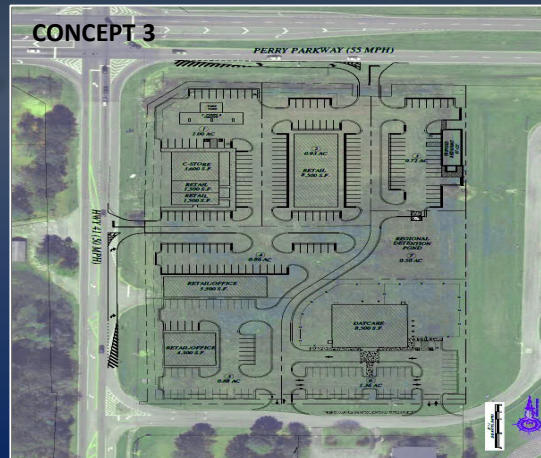
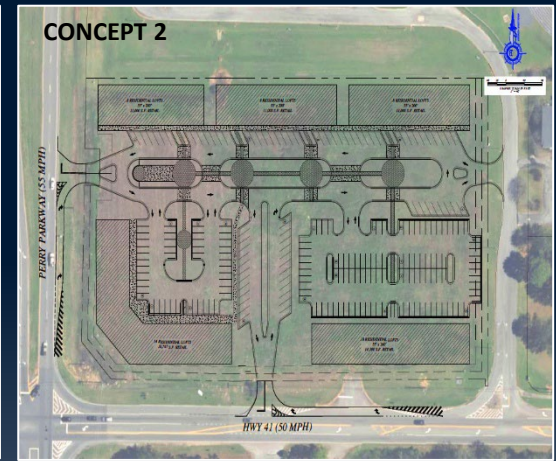
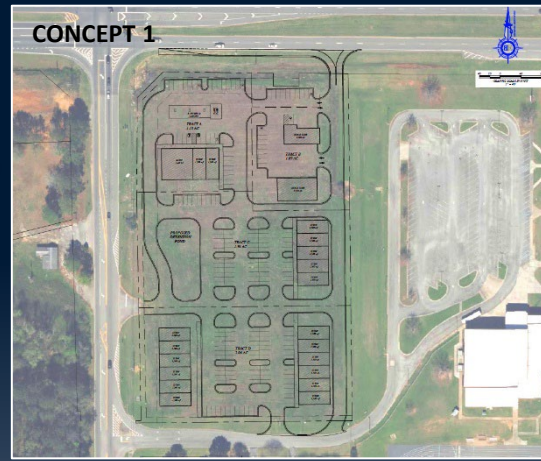


DEREK FOSTER C: 478.997.1024
DFOSTER@THESUMMITGROUPMACON.COM
1120 BALL STREET, PERRY, GA 31069
O: 478.313.5213
WWW.THESUMMITGROUPMACON.COM



PROPERTY INFORMATION

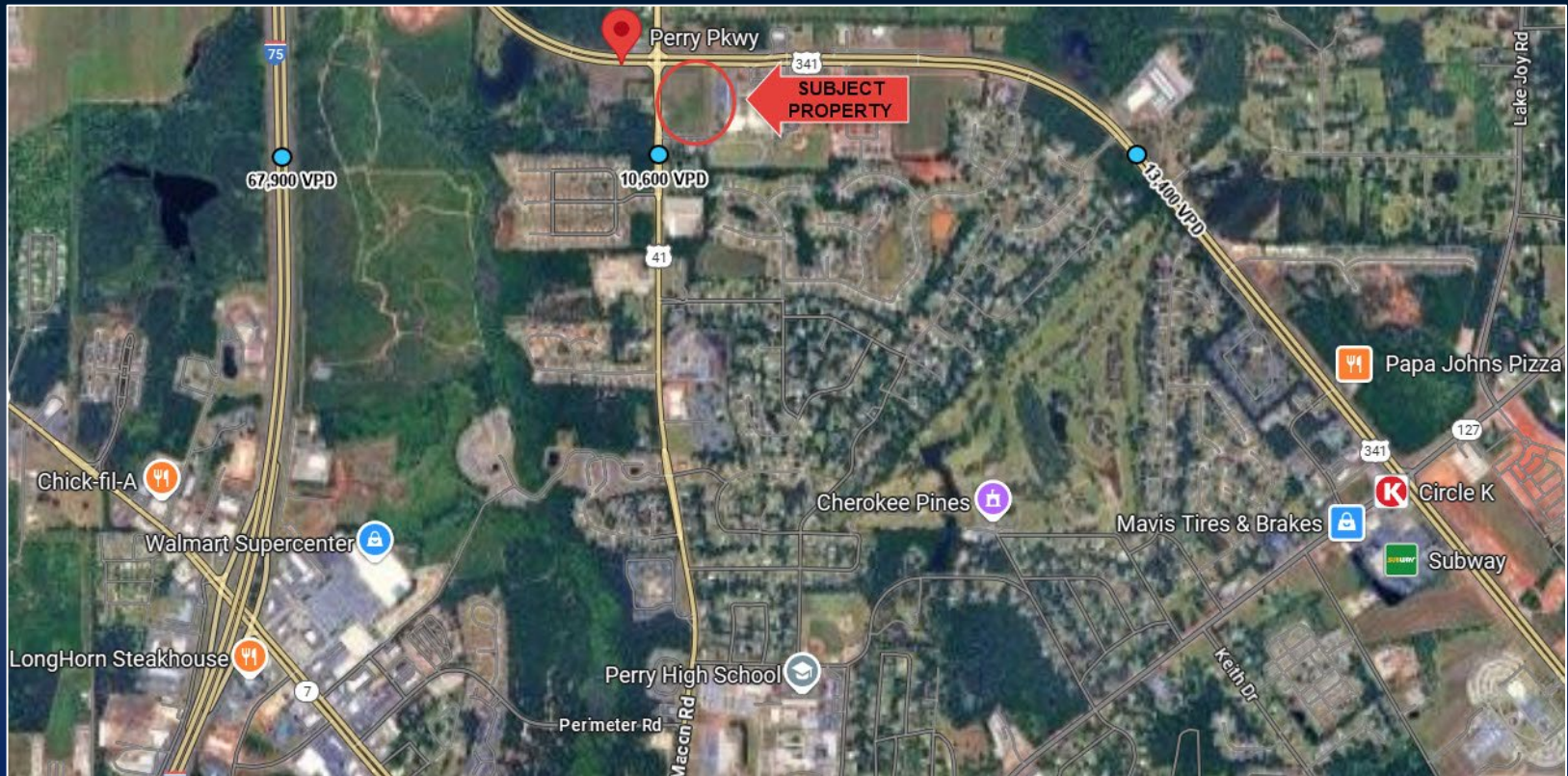
- ±6.28 acres ideal for retail, medical, hospitality, or mixed-use projects
- Site can be subdivided
- Zoned: C-2 (Commercial)
- In close proximity to schools, residential neighborhoods, and major thoroughfares
- The site's size and frontage allows for flexible site planning, multiple access points, and the ability to accommodate national retailers, quick-service restaurants, or professional office users
- Located at the signalized intersection of US Highway 41 and North Perry Parkway (341 Bypass)
- Traffic Counts (GDOT 2023:):
 - Perry Parkway – 13,400 VPD
 - Highway 41 – 10,600 VPD
 - I-75 – 67,900 VPD



PERRY PARKWAY @ HIGHWAY 41
PERRY, GA 31069
HOUSTON COUNTY



MAP



The information contained herein has been compiled from various sources, both private and public. It is accurate and complete only to the extent to which The Summit Group has been able to ascertain from third party sources. As such, no warranty or guarantee is given or implied with regard to the accuracy or completeness of any information contained herein. Any interested party shall be required to conduct its own due diligence and investigations to verify, review, audit, or otherwise insure the information contained herein.

