



FOR LEASE

HIGHLY VISIBLE YORK RD RETAIL SPACE

1301 YORK ROAD | LUTHERVILLE-TIMONIUM, MARYLAND 21093



MACKENZIE

COMMERCIAL REAL ESTATE SERVICES, LLC

PROPERTY OVERVIEW

HIGHLIGHTS:

- Rare opportunity to lease highly visible retail space on York Road
- Signalized intersection in busy Lutherville-Timonium
- Traffic Counts: 38,000+ AADT
- Large outdoor patio in front of the premises
- Building lobbies and restrooms fully renovated
- Two new pylon signs with the opportunity for building signage
- Join the iconic Peppermill Restaurant
- Current layout has potential to demise

1ST FLOOR RETAIL:

2,000 - 3,902 SF

TRAFFIC COUNT:

38,420 AADT (YORK RD/RT. 45)

ZONING:

BL (BUSINESS LOCAL)

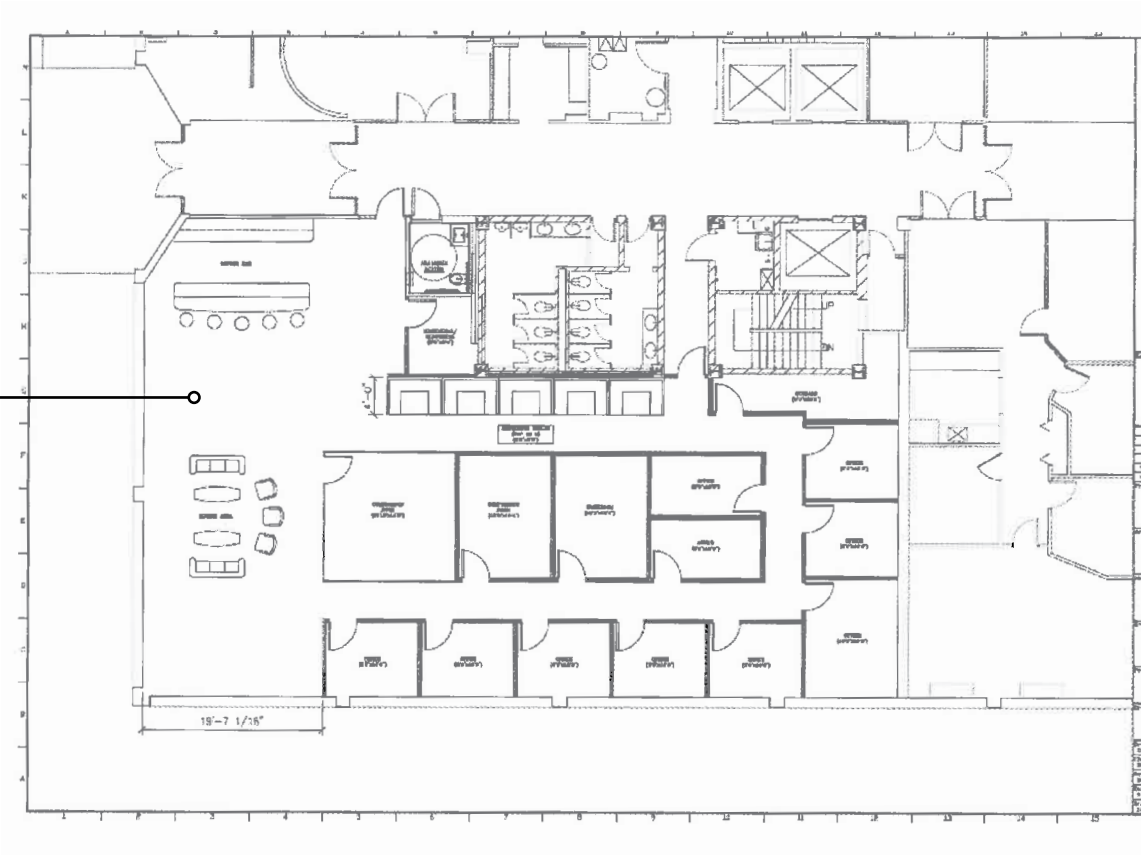


GOOGLE STREET VIEW

FLOOR PLAN: 1ST FLOOR

1st Floor Retail/Office Space with Building Signage

2,000 - 3,902 SF available



LOCAL BIRDSEYE



FOR MORE INFO CONTACT:



HENRY DEFORD

SENIOR VICE PRESIDENT & PRINCIPAL

410.494.4861

HDEFORD@mackenziecommercial.com



JOE BRADLEY

SENIOR VICE PRESIDENT & PRINCIPAL

410.494.4892

JBRADLEY@mackenziecommercial.com



DYLAN BOZEL

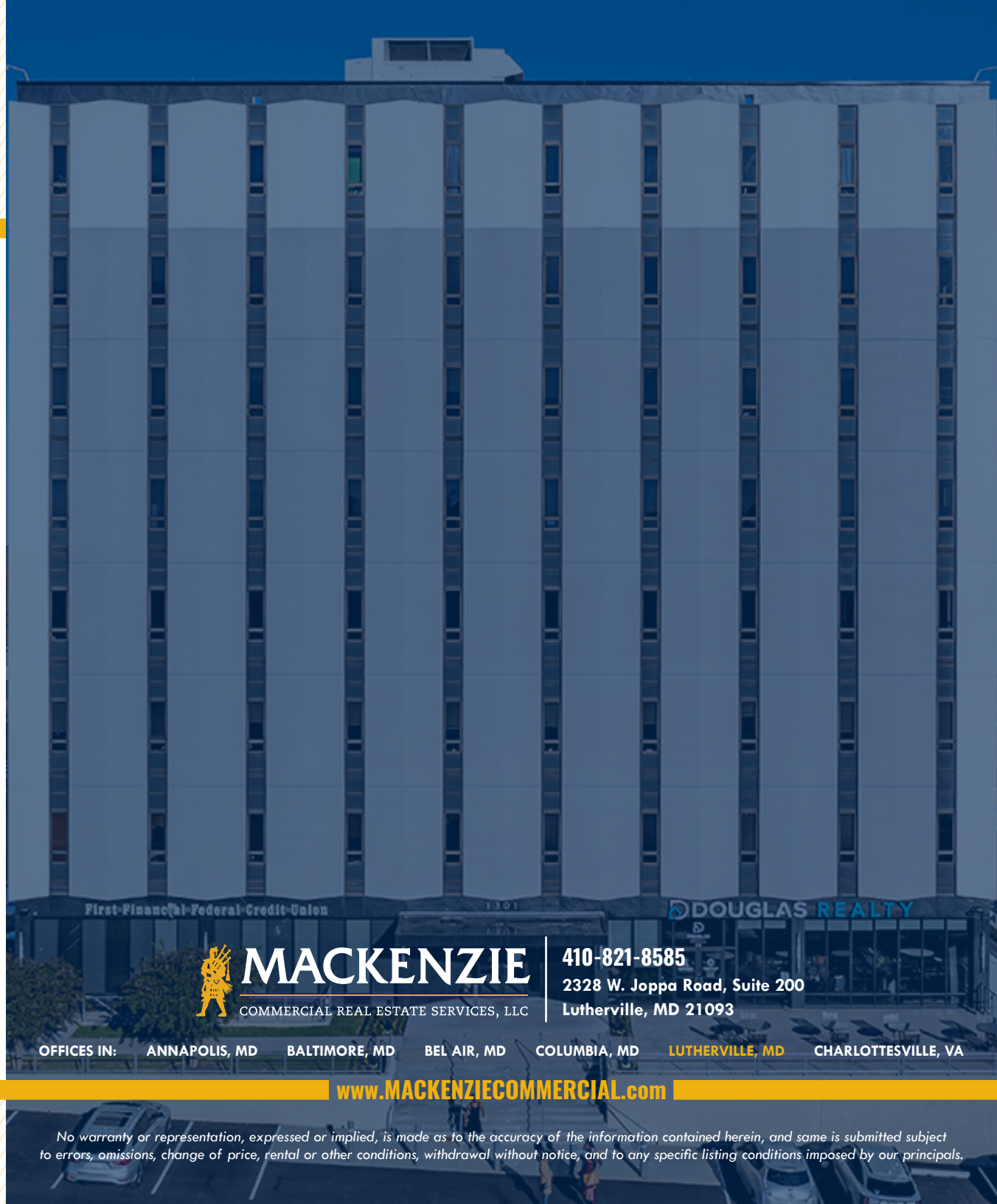
REAL ESTATE ADVISOR

410.494.4896

DBOZEL@mackenziecommercial.com



VISIT **PROPERTY PAGE** FOR MORE INFORMATION.



MACKENZIE

COMMERCIAL REAL ESTATE SERVICES, LLC

410-821-8585

2328 W. Joppa Road, Suite 200

Lutherville, MD 21093

OFFICES IN: ANNAPOLIS, MD BALTIMORE, MD BEL AIR, MD COLUMBIA, MD LUTHERVILLE, MD CHARLOTTESVILLE, VA

www.MACKENZIECOMMERCIAL.com

No warranty or representation, expressed or implied, is made as to the accuracy of the information contained herein, and same is submitted subject to errors, omissions, change of price, rental or other conditions, withdrawal without notice, and to any specific listing conditions imposed by our principals.