



•BANK BVILDING•  
REDWOOD PROPERTY

# NOW LEASING

420-440 Railroad Ave | Pittsburg, CA

Matt Hagar, SIOR, MSRE, CCIM |  
Co-Founder & Managing Partner  
DRE# 01896662 | 925-380-9006  
MHagar@AiCREPartners.com

Ryan Jensen | Advisor  
DRE# 02240884 | 925-450-8483  
RJensen@AiCREPartners.com

[www.AiCREPartners.com](http://www.AiCREPartners.com)

# Disclaimer

The information contained in this Offering Memorandum is confidential and is provided for the sole purpose of allowing persons to evaluate whether there is interest in proceeding with further discussions with the owner regarding a possible transaction with respect to the Property. The information contained herein shall not be photocopied or disclosed to any other party and shall not be used for any other purpose.

Neither the owner, nor AiCRE, nor any of their officers, directors, employees or agents, assume any responsibility or make any representations or warranties, whether express or implied, by operation of law or otherwise, with respect to the Property or this Offering Memorandum or any information or statements (including financial statements and projections) contained herein or relating hereto, including the accuracy or completeness of such information or statements and the condition, quality or fitness of the Property. Such information and statements have in many circumstances been obtained from outside sources, have not been tested or verified and may be subject to errors or omissions. Projections, in particular, are based on various assumptions and subjective determinations as to which no guaranty or assurance can be given. Without limiting the foregoing, in the event this Offering Memorandum contains information relating any hazardous, toxic or dangerous materials in relation to the Property, such information shall in no way be construed as creating any warranties or representations, express or implied, by operation of law or otherwise, by any party, as to the existence or non-existence or nature of such materials in, under, on or around the Property. Potential investors are urged to perform their own examination and inspection of the Property and information relating to same, and shall rely solely on such examination and investigation and not on this Offering Memorandum or any information or materials contained herein or otherwise provided.

The only party authorized to represent the owner of the Property is AiCRE and the owner shall not be obligated to pay any fees or commissions to any other advisor, broker or representative. This Offering Memorandum is provided subject to prior sale or lease, change of price or terms and other changes to the materials, statements and information contained herein or relating to the Property, and is subject to withdrawal, all without notice or any liability. In no event shall the delivery or receipt of this Offering Memorandum be deemed to create any legal obligation to enter into any transaction with respect to the Property, and only a definitive agreement signed by all parties shall create a binding commitment to enter into a transaction.

**Matt Hagar, SIOR, MSRE, CCIM | Co-Founder & Managing Partner**

DRE# 01896662 | 925-380-9006

MHagar@AiCREPartners.com

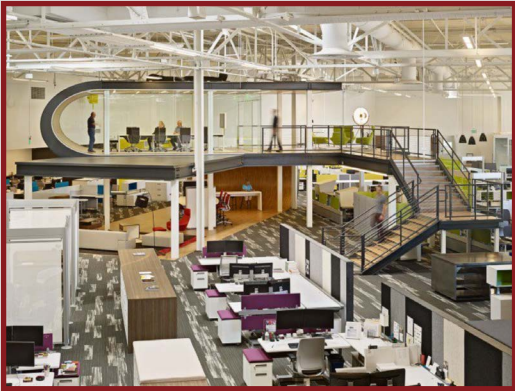
**Ryan Jensen | Advisor**

DRE# 02240884 | 925-450-8483

RJensen@AiCREPartners.com

[www.AiCREPartners.com](http://www.AiCREPartners.com)

easy commute | ample parking  
fully-renovated office spaces  
old town pittsburg



12 Virtual Staging & Photos

# Content

04

Executive Summary

06

Video Overview

07

Floor Plans

13

Maps & Aerials

16

Location Overview

17

Demographics



420-440 Railroad Ave | Pittsburg, CA

04

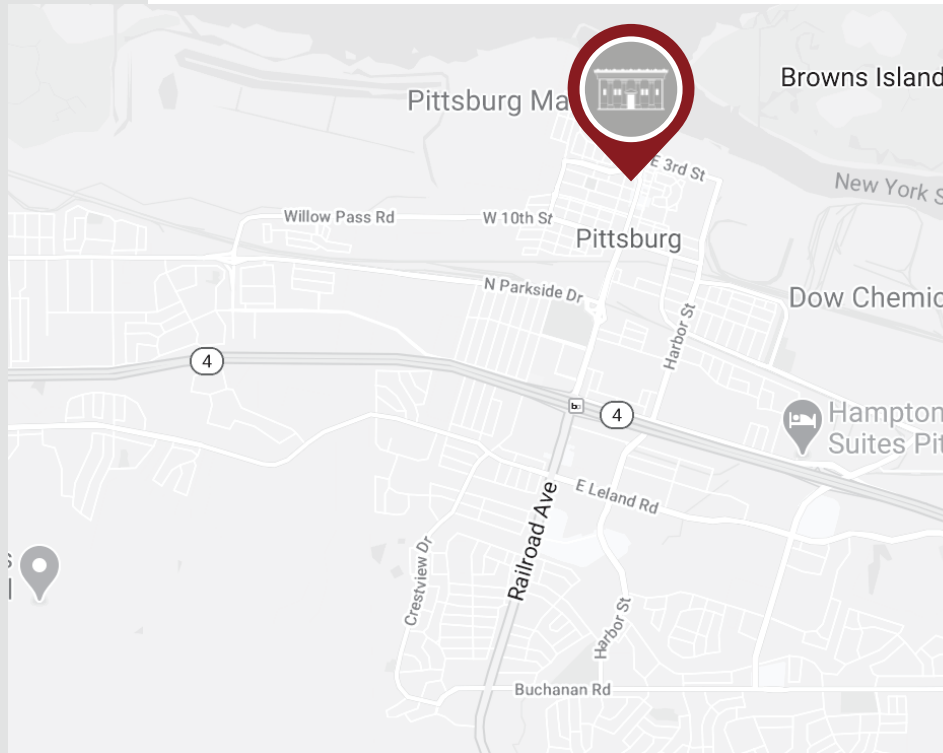
# Executive Summary

IMAGINE...  
a new way  
to work.

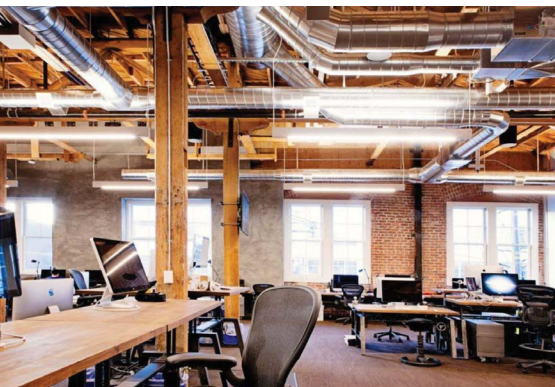
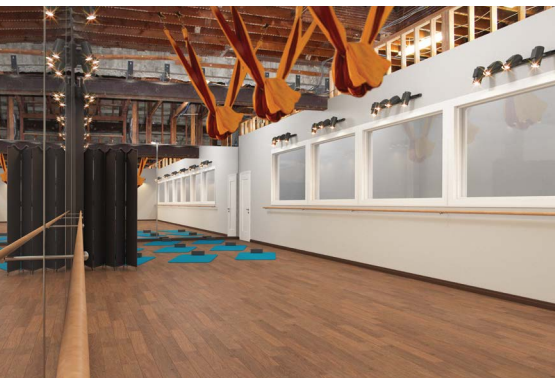
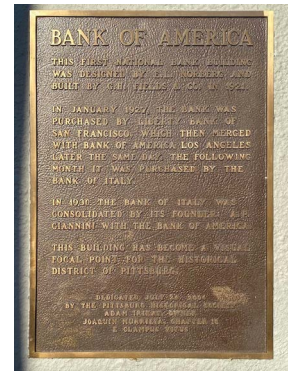
Executive Office Spaces for lease inside the **newly renovated & completely restored** Historic Bank Building, located at 420-440 Railroad Avenue in Old Town Pittsburg. With space from 150 to 2,236 square feet, we can work with you on the buildout of your new office space, providing you with a real office so you don't have to meet at coffee shops any longer.

## Property Highlights

- ✓ Newly Renovated & Completely Restored
- ✓ Originally built in 1921
- ✓ Recognized by Pittsburg Historical Society
- ✓ Inaugurated for a second time with modern design and latest technology
- ✓ Space range from 150 - 2,236 sq ft
- ✓ Fully renovated office spaces
- ✓ Easy commute
- ✓ Ample parking

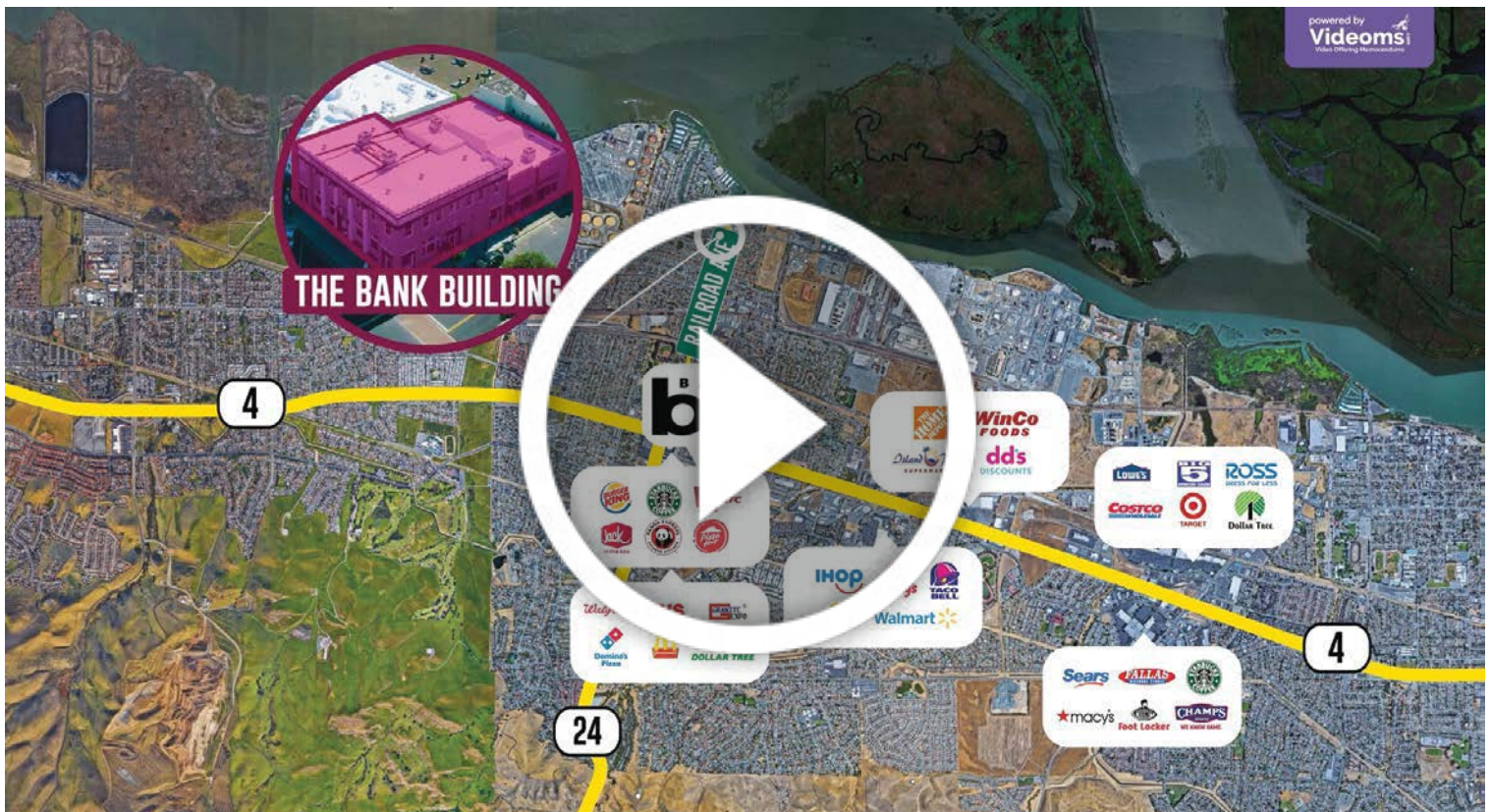




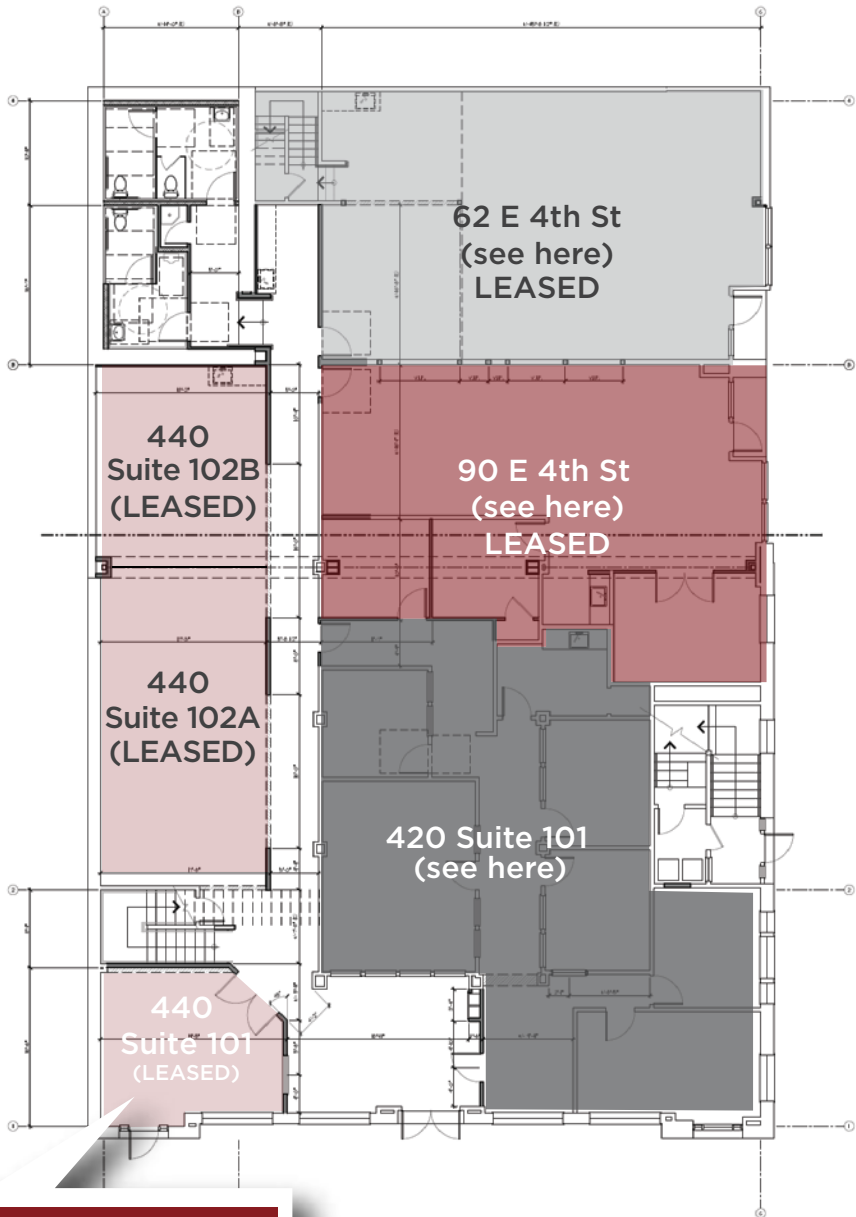




# Video Overview



# Floor One



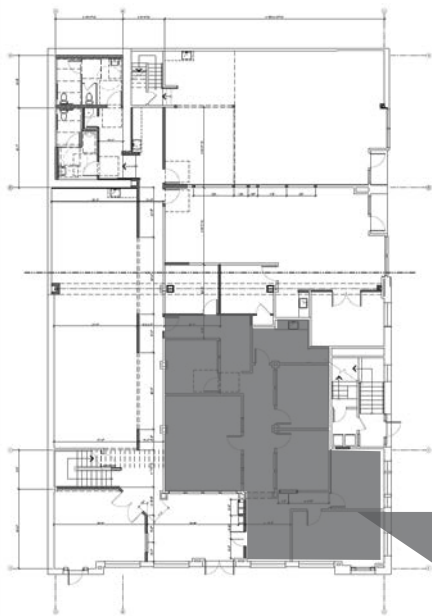
SUITE	SQ FT	RENT
440 Suite 101	284	LEASED

420-440 Railroad Ave | Pittsburg, CA

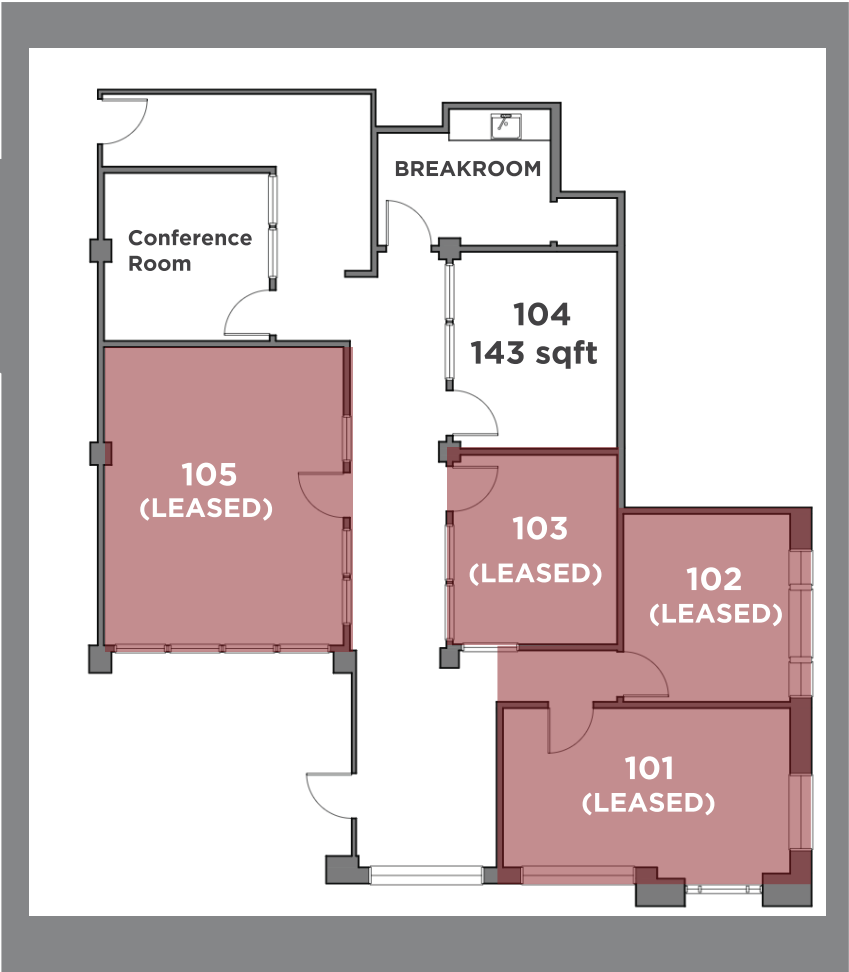
08

# Suite 101

958 sq ft



SUITE	SQ FT	AVAILABILITY
101	210	LEASED
102	151	LEASED
103	138	LEASED
104	143	AVAILABLE
105	316	LEASED

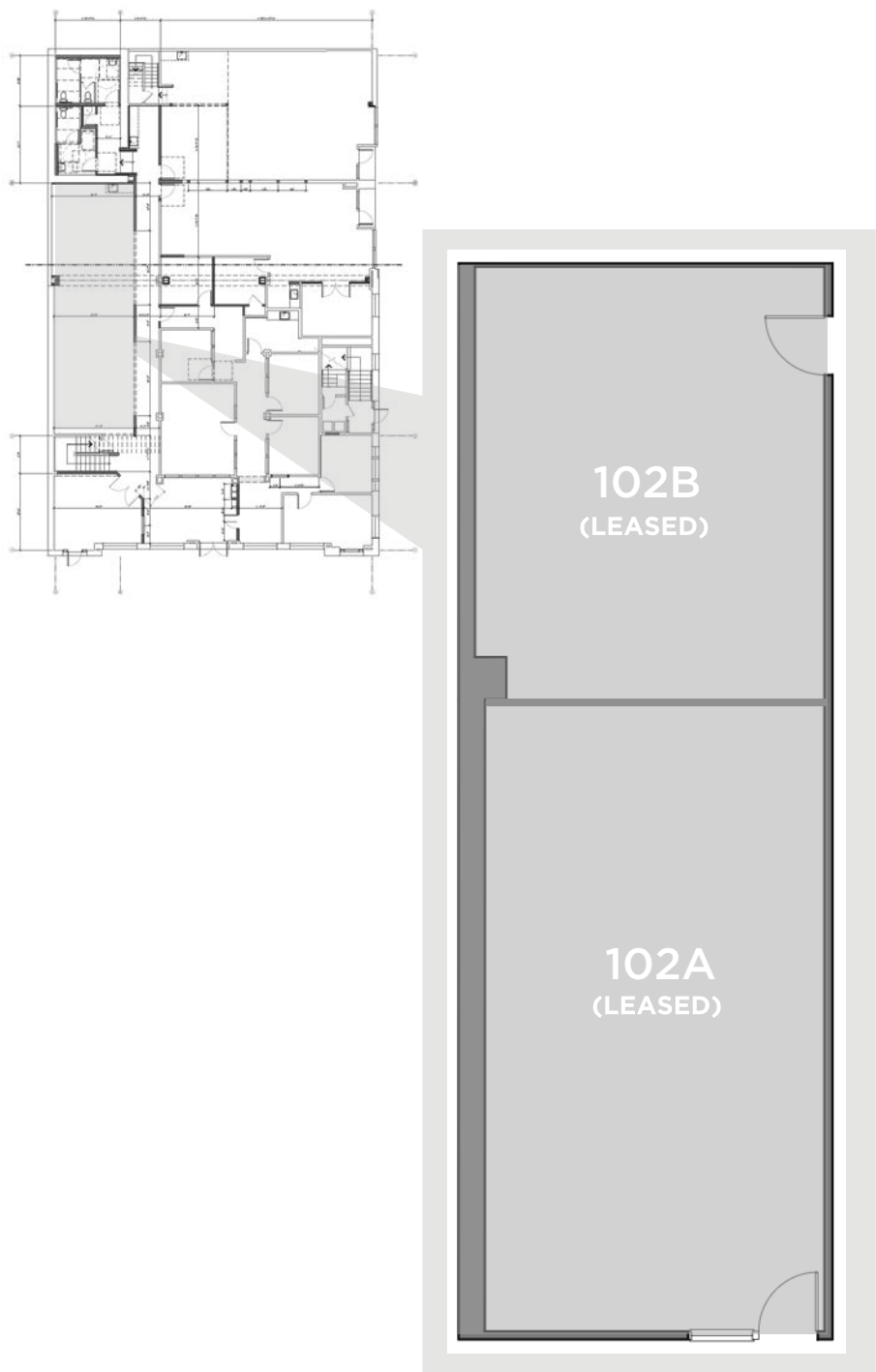




09

# Suite 102

940 sq ft



SUITE	SQ FT	RENT
102A	540	LEASED
102B	400	LEASED

## THE POSSIBILITIES...

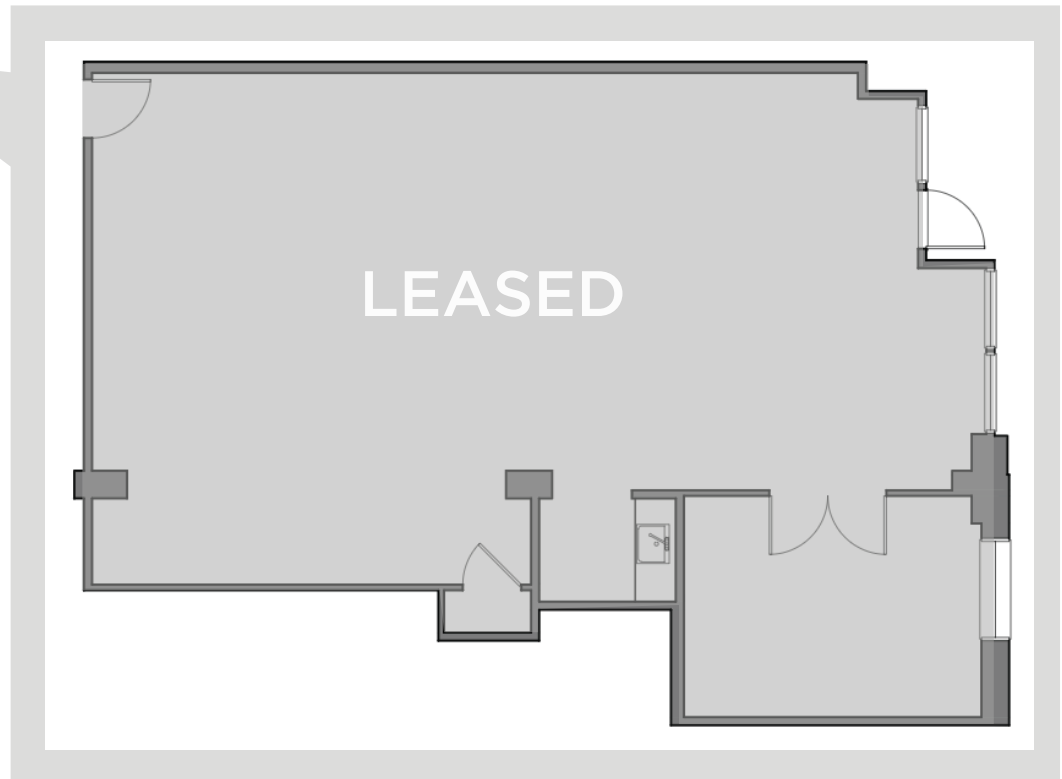
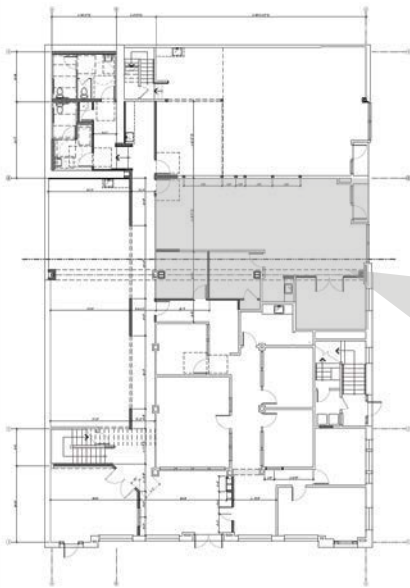


420-440 Railroad Ave | Pittsburg, CA

10

**90 E 4th St**

**1,156 sq ft**

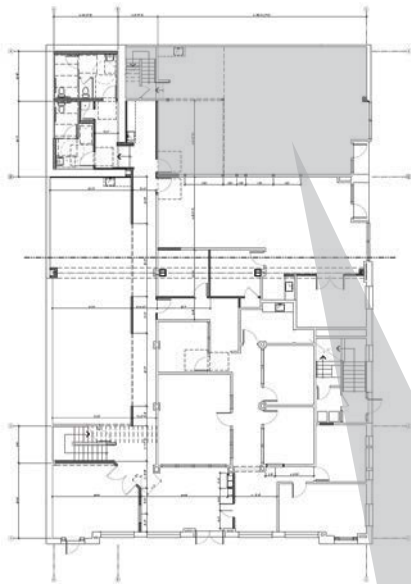


420-440 Railroad Ave | Pittsburg, CA

11

# 62 E 4th St

2,236 sq ft

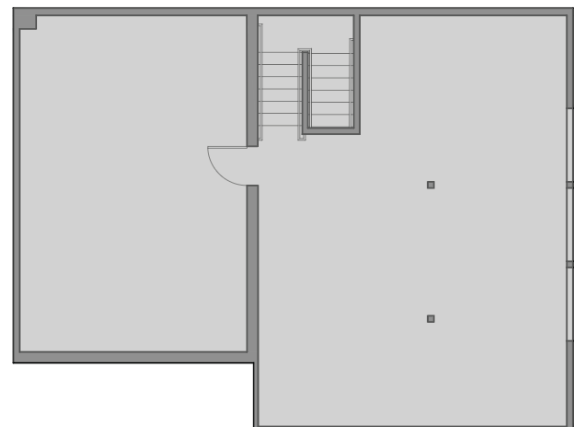


## THE POSSIBILITIES...



1st floor

2nd floor





420-440 Railroad Ave | Pittsburg, CA

12

# Floor Two

SUITE	SQ FT	AVAILABILITY
203	146	AVAILABLE
212	133	AVAILABLE
220	268	AVAILABLE



# Aerial Maps





# Aerial Maps

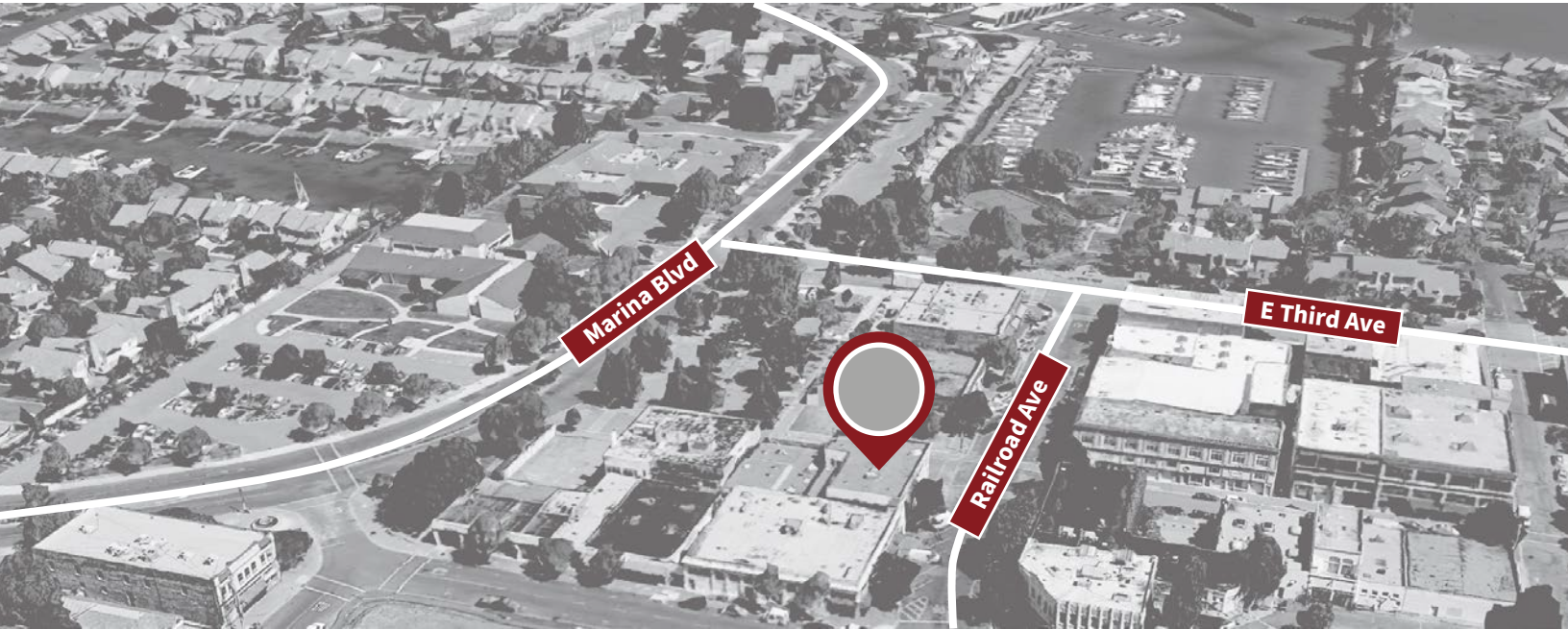
Abundant amenities within minutes, including restaurants, shops, Buckley Square, and the marina.





420-440 Railroad Ave | Pittsburg, CA

# Aerial Maps





# Location Overview



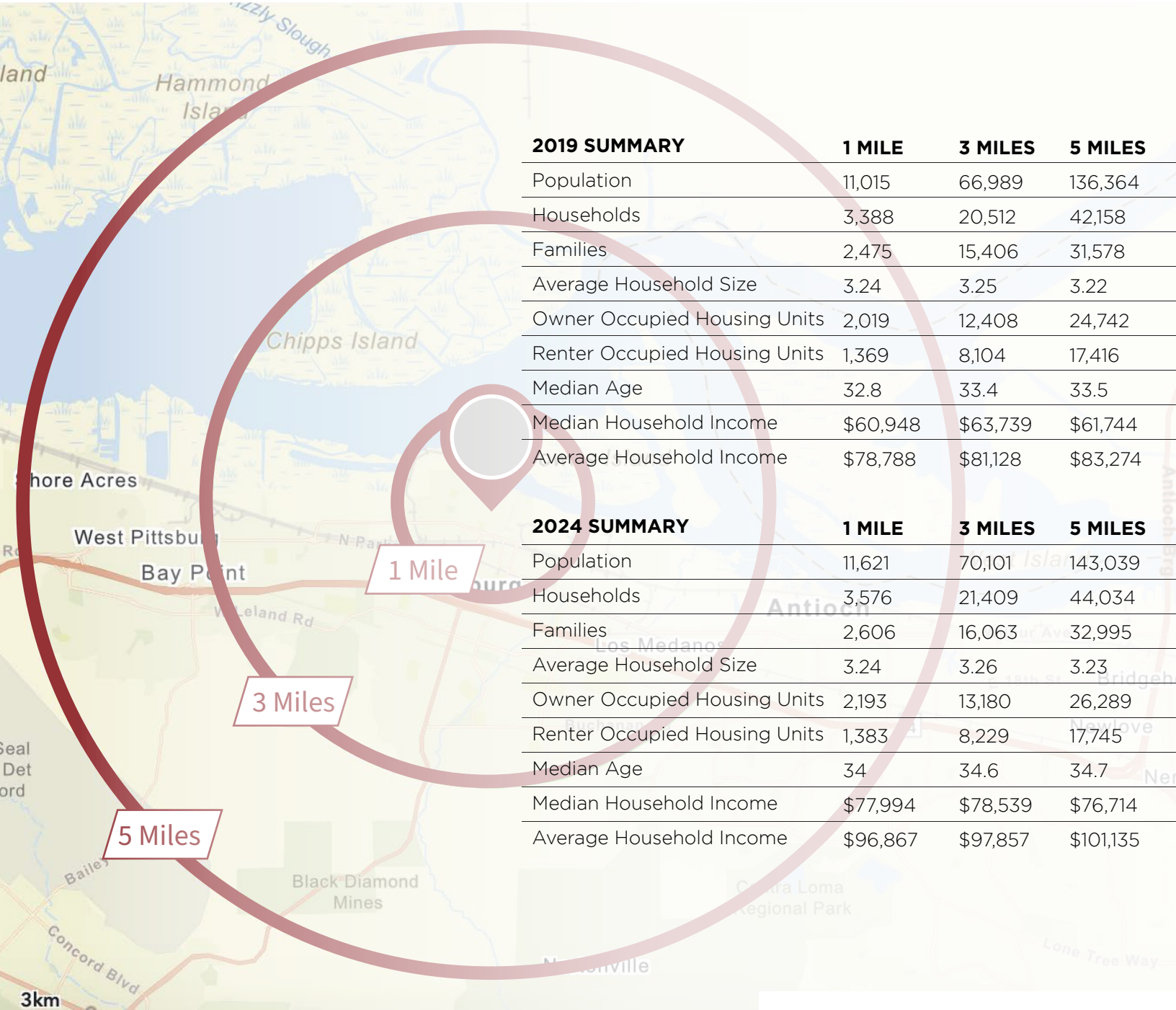
Pittsburg is a city in Contra Costa County, California, United States. It is an industrial suburb located on the southern shore of the Suisun Bay in the East Bay region of the San Francisco Bay Area, and is part of the Sacramento-San Joaquin River Delta area. The city has an extensive history of coal mining and industrial development since the late 1800s, with USS-POSCO Industries (a joint venture between US Steel and POSCO of South Korea) and Dow Chemical Company maintaining substantial plants in Pittsburg.

Pittsburg has grown into a pleasant community of landscaped parks, recreational facilities, shopping centers, affordable housing and planned business and commercial development.

Pittsburg is striding into the future, each day more prosperous than the one before. New homes, renovated older homes, new businesses, a historic district being revived are all signs of even better times to come. Additionally, Pittsburg's local government has expanded the parks system, improved the roads, increased commerce and employment, expanded the Marina and built a modern Civic Center to take it into the 21st century. All of this at no additional cost to the taxpayer. Working together, the progress will continue.

On June 15, 2019, the East Bay Times reported that the Canadian company, Bombardier, Inc. is moving into a former warehouse in Pittsburg, where it will produce train cars destined for its Pacific Coast customers. Bombardier is one of the most active suppliers of train cars, and officials believe that the Pittsburg will substantially improve its competitive position.

# Demographics





# CONTACT

**Matt Hagar, MSRE, CCIM, SIOR |  
Co-Founder & Managing Partner**

DRE# 01896662

925-380-9006

MHagar@AiCREPartners.com

**Ryan Jensen | Advisor**

DRE# 02240884

925-450-8483

RJensen@AiCREPartners.com

---

[www.AiCREPartners.com](http://www.AiCREPartners.com)

