

566 WEST LAKE

\$1.75/RSF/Year
commission

brick-and-timber loft in
the **heart** of the west loop



FOR MORE INFORMATION OR TO ARRANGE
AN INSPECTION, PLEASE CONTACT:

CRAIG NADBORNE

+1 312 994 5796

cnadborne@bradfordallen.com

EXCLUSIVE LEASING AGENT:

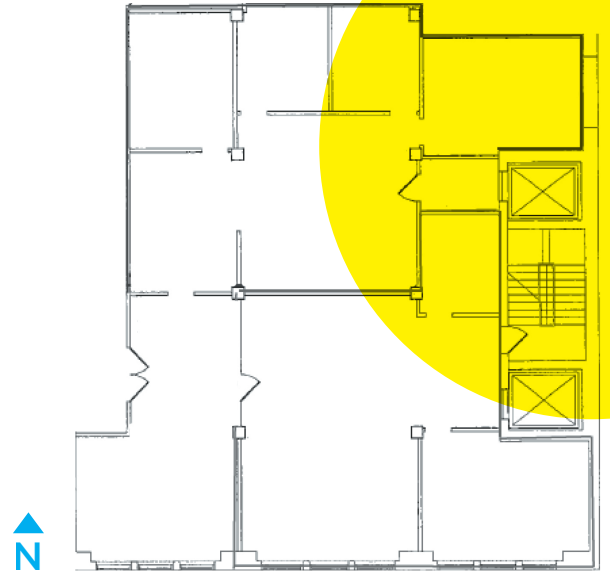
BA BRADFORD
ALLEN

566 WEST LAKE



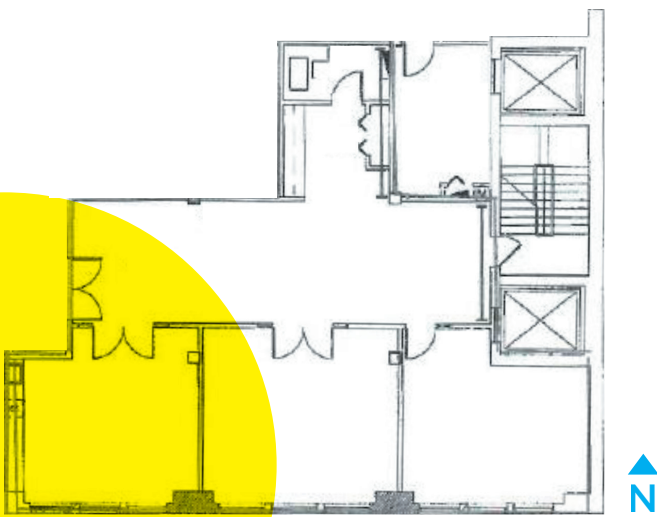
SUITE 225 - 2,995 SF

- Two (2) semi-private offices along the south wall
- One (1) conference room/large private office in the SE corner
- One (1) large conference room in the NE corner of the suite
- Three (3) interior private offices along the north wall
- Two (2) large open area for desks/cubes
- The space has use of a shared galley kitchen in the common hallway



SUITE 310 - 1,486 SF

- Two (2) large private offices (approx. 19' x 17' and 18' x 14.5')
- One (1) large conference room (approx. 17' x 17')
- Refrigerator and sink along the west wall of conference room
- Open area for cubes/desks
- Work area with counter top



EXCLUSIVE LEASING AGENT:

BA BRADFORD
ALLEN

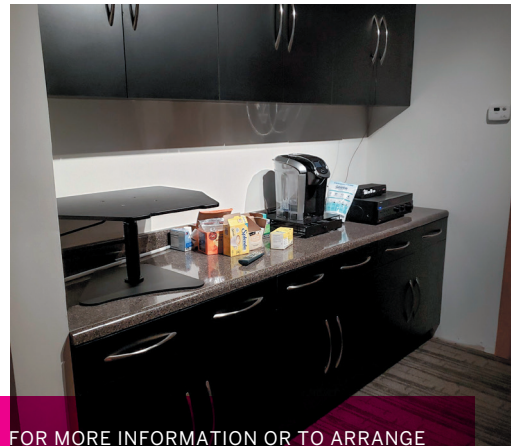
FOR MORE INFORMATION OR TO ARRANGE
AN INSPECTION, PLEASE CONTACT:

CRAIG NADBORNE

312 994 5796

cnadborne@bradfordallen.com

566 WEST LAKE



FOR MORE INFORMATION OR TO ARRANGE
AN INSPECTION, PLEASE CONTACT:

CRAIG NADBORNE

312 994 5796

cnadborne@bradfordallen.com

EXCLUSIVE LEASING AGENT:

BA BRADFORD
ALLEN