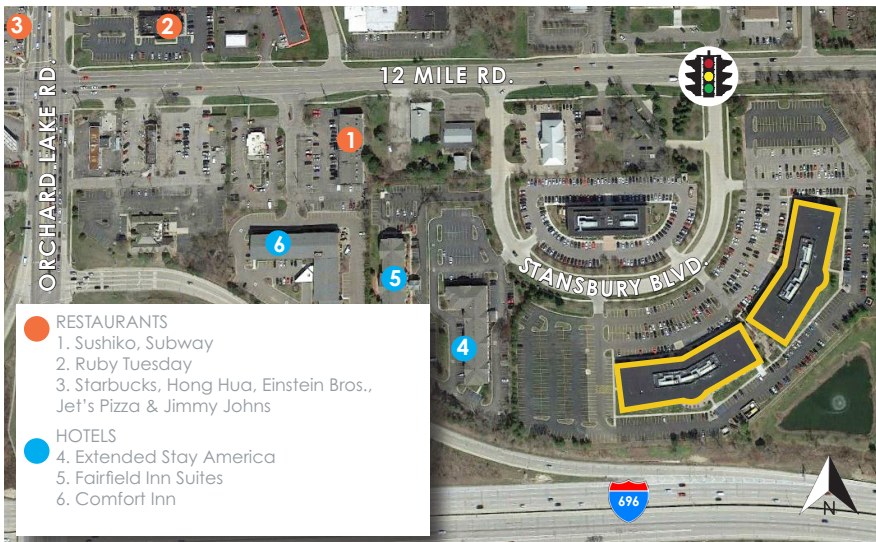


ORCHARDS CORPORATE CENTER

27725 & 27755 STANSBURY BOULEVARD, FARMINGTON HILLS



PREMISES

- Two, three-story office buildings totaling 216,000 SF

AVAILABILITY

27725 Stansbury Boulevard

- 1st Floor: 3,761 SF
- 3rd Floor: 14,633 SF

27755 Stansbury Boulevard

- 1st Floor: 4,460 SF up to 7,102 SF
- 2nd Floor: 3,428 SF up to 5,665 SF
- 3rd Floor: 8,236 SF

RENTAL RATE

- \$22.50 psf
- 2026 Base Year, plus electricity

FEATURES AND AMENITIES

- **NEW AMENITIES** include; 24-hour self-checkout micro-market, by Market Twenty 4 Seven, with abundant selections, modern community style seating and flat screen televisions; fully equipped fitness center with flat screen televisions and two private showers
- **NEWLY RENOVATED** two-story atrium lobbies with premium finishes
- I-696 freeway visibility with prominent building signage available
- Attractive landscaped courtyard between buildings
- 27755 Stansbury equipped with a full-building generator
- Numerous neighboring amenities including two hotels within the park
- Adjacent I-696 interchange offers convenient access to all major freeways
- Ample, well-lit parking

FOR MORE INFORMATION

Dan Leppink | dleppink@kojaian.com
Eric Horwitz | ehorwitz@kojaian.com
Kojaian Management Corporation
Kojaian.com
248.644.7600

MORE THAN
BUILDINGS

LOCATION | BUSINESS | IMAGE | SUCCESS

KOJAIAN

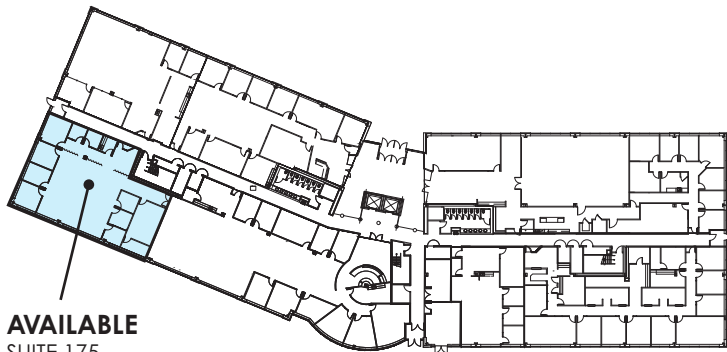
KOJAIAN.COM

ORCHARDS CORPORATE CENTER

27725 & 27755 STANSBURY BOULEVARD, FARMINGTON HILLS

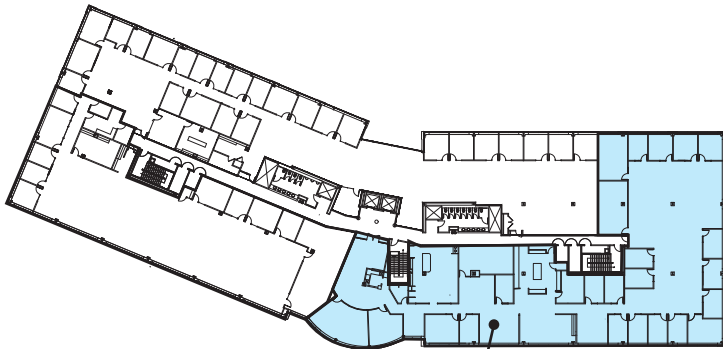
27725 STANSBURY BLVD.

FIRST FLOOR



AVAILABLE
SUITE 175
3,761 RSF

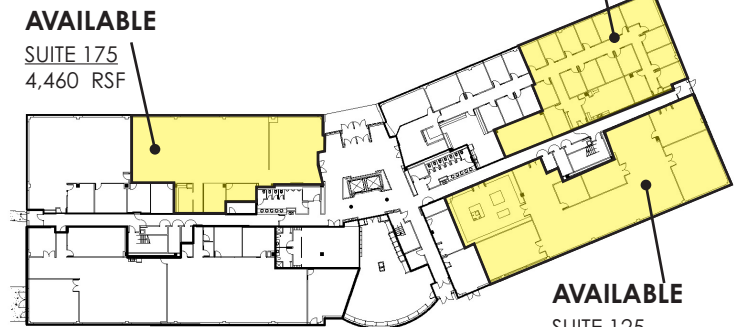
THIRD FLOOR



AVAILABLE
SUITE 300
14,633 RSF

27755 STANSBURY BLVD.

FIRST FLOOR

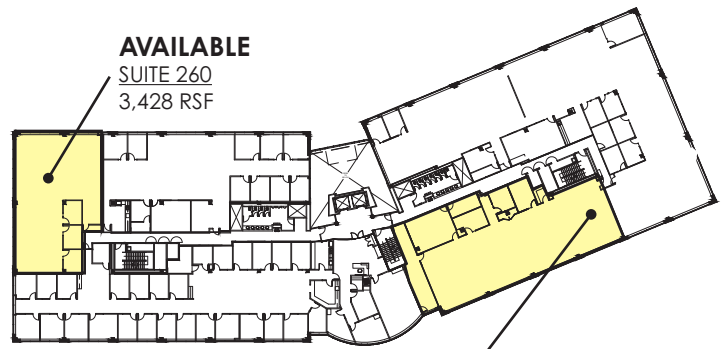


AVAILABLE
SUITE 175
4,460 RSF

AVAILABLE
SUITE 140
4,528 RSF

AVAILABLE
SUITE 125
7,102 RSF

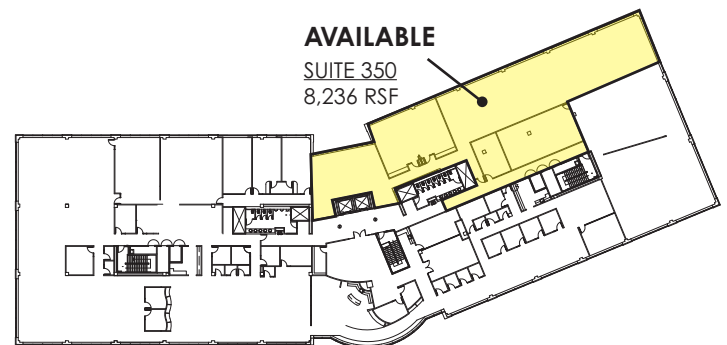
SECOND FLOOR



AVAILABLE
SUITE 260
3,428 RSF

AVAILABLE
SUITE 225
5,665 RSF

THIRD FLOOR



AVAILABLE
SUITE 350
8,236 RSF

FOR MORE INFORMATION

Dan Leppink | dleppink@kojaian.com
Eric Horwitz | ehorwitz@kojaian.com
Kojaian Management Corporation
Kojaian.com
248.644.7600