



CORPORATE
CENTER
CALABASAS

26637

26635



WESTCORD

NO
STOPPING
DELIVERIES
IN REAR

2 6 6 3 5 - 2 6 6 3 7
A G O U R A R D
C A L A B A S A S , C A



Corporate Center Calabasas in Calabasas, California is part of the upscale community nestled in the oak-filled foothills of the Santa Monica Mountains. Located on Agoura Road between the Las Virgenes and Lost Hills exits off the Venture Freeway, this Class-A business center features upgraded common areas, modern creative office spaces, and abundant parking.

HIGHLIGHTS

26635-26637
AGOURA RD
CALABASAS, CA

46,000 square foot Class A office building in the heart of Calabasas nestled within a beautiful business campus.

An abundance of nearby amenities including Erewhon, Calabasas Malibu Inn, Cambria Hotel, and many more.

Recently renovated building lobby, corridors, and indoor/outdoor common areas with outdoor patio.

Recently completed exterior façade renovation with enhanced visibility and signage.

Centralized location with convenient access to 101 Freeway and Pacific Coast Highway.

Ample parking at a ratio of 3.45/1,000 with the ability to reserve spaces.

High-end creative office suites with natural light and direct exterior and interior entrances.



CORPORATE
CENTER
CALABASAS

AVAILABILITIES



Suite

255



Size

±1,503 RSF



Lease Rate

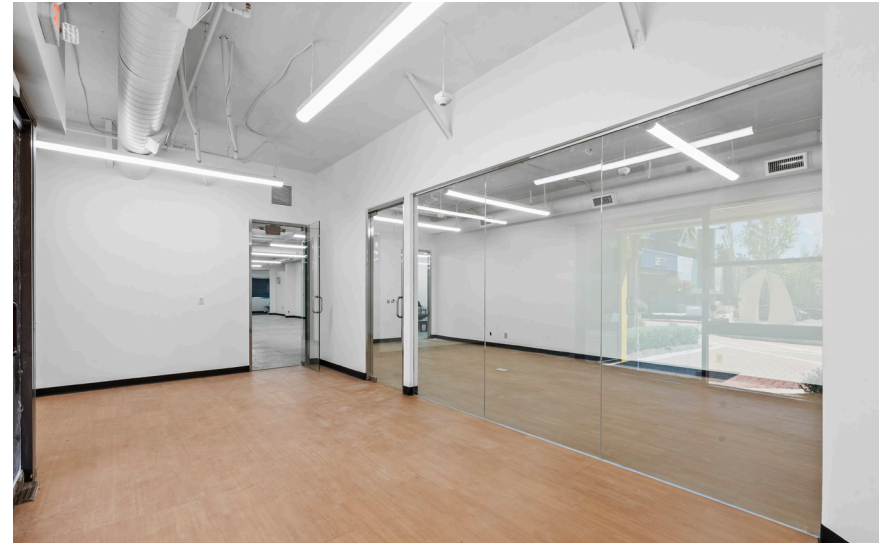
\$2.65 FSG



Occupancy

Immediate

Parking: 3.45/1,000



SPEC SUITES

Dedicated to delivering exceptional office environments, our property ownership ensures a commitment to excellence. Within our spec suites, you'll find a fusion of modern design and functionality, boasting features such as exposed ceilings, expansive floor-to-ceiling glass, thoughtfully equipped kitchenettes, upgraded flooring, and an array of additional amenities.



MODERN
CREATIVE
SPACES



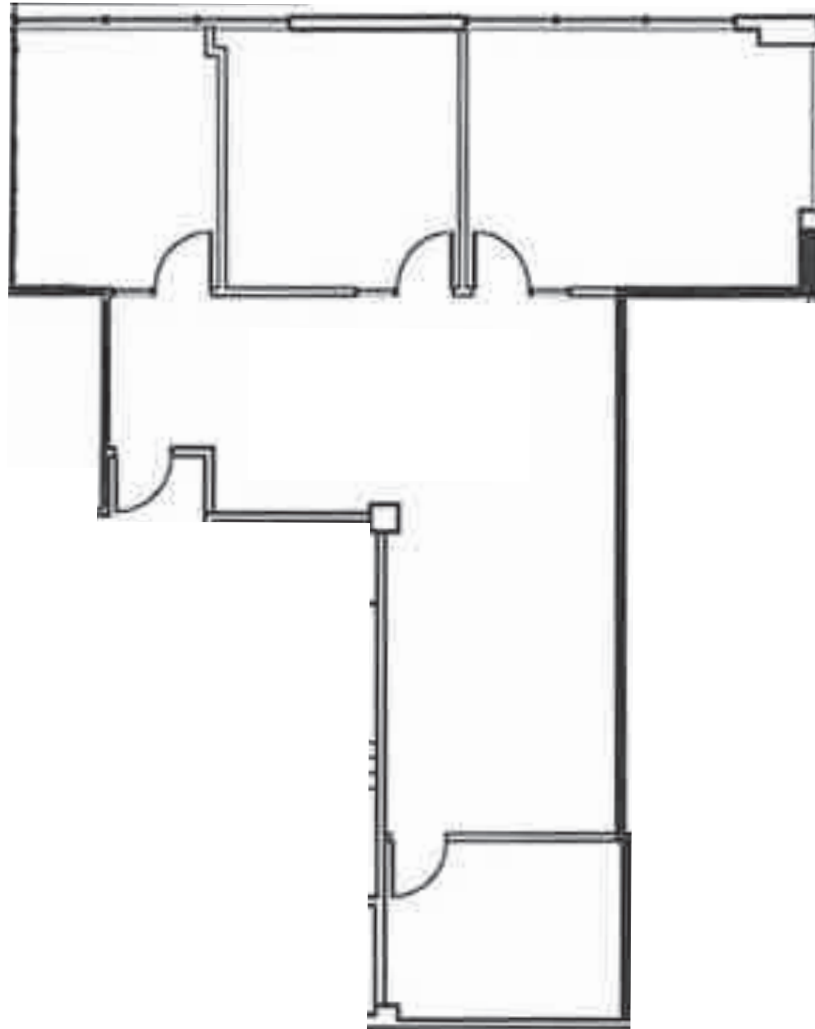
UPDATED
LOBBIES,
RESTROOMS,
AND CORRIDORS

AERIAL OVERVIEW



CORPORATE
CENTER
CALABASAS





FLOOR
PLAN

**SUITE
255**

SQFT 1,503 RSF



CORPORATE
CENTER
CALABASAS





CORPORATE
CENTER
CALABASAS

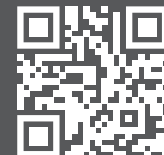


Jeremy Principe

Vice President
DRE #02131156
M (805) 390-5267
T (805) 497-4557
jeremy@westcord.com

Brendan Pagani

Vice President
DRE #02095300
M (949) 887-9814
T (805) 497-4557
brendan@westcord.com



WESTCORD.COM