

FOR LEASE

White Bear Ave Retail Center

3607 White Bear Ave, White Bear Lake, MN 55110



LISTING DETAILS

- Building Size: 8,615 SF
- Available Suites:
 - Suite 202 825 SF
 - Suite A 547 SF
 - Suite B 615 SF
- Lease Rates:
 - Suite 202 \$1,306.25 /month
 - Suite A \$730.00 /month
 - Suite B \$820.00 /month

PROPERTY DETAILS

- On building signage available
- Nearby restaurants and retail

LOCATION



Mark Young

D: 651-233-2435 | M: 651-307-2371

Zac Houle

D: 651-209-0520 | M: 651-248-7567

7250 Hudson Boulevard N, Suite 160, Oakdale, MN 55128

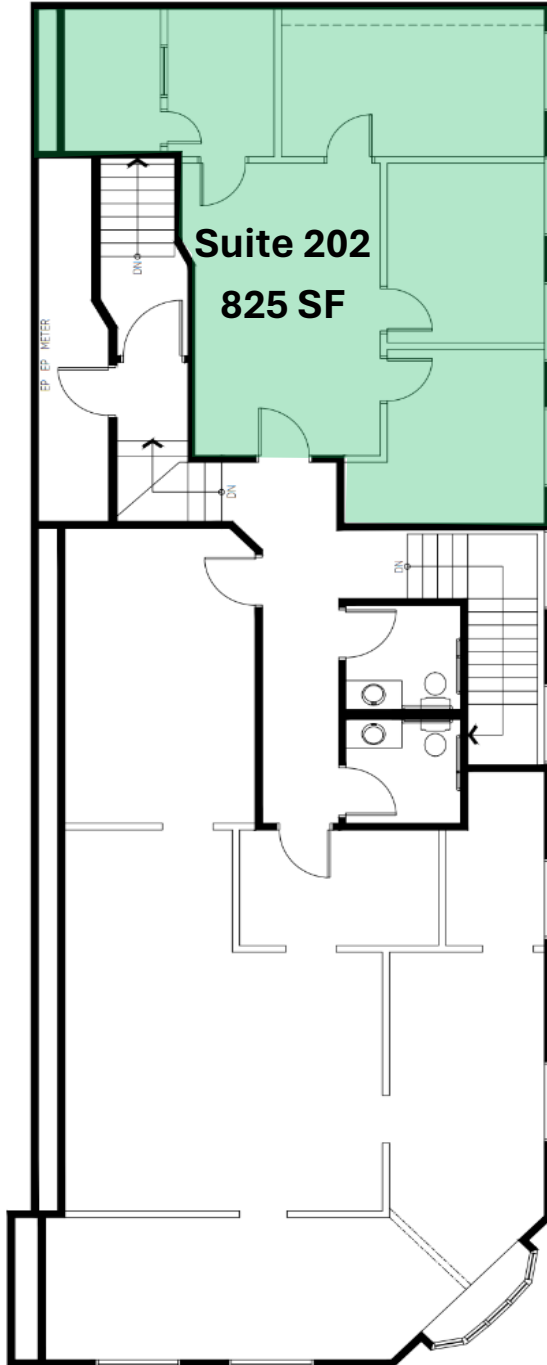
www.crossroadsproperties.net

FOR LEASE

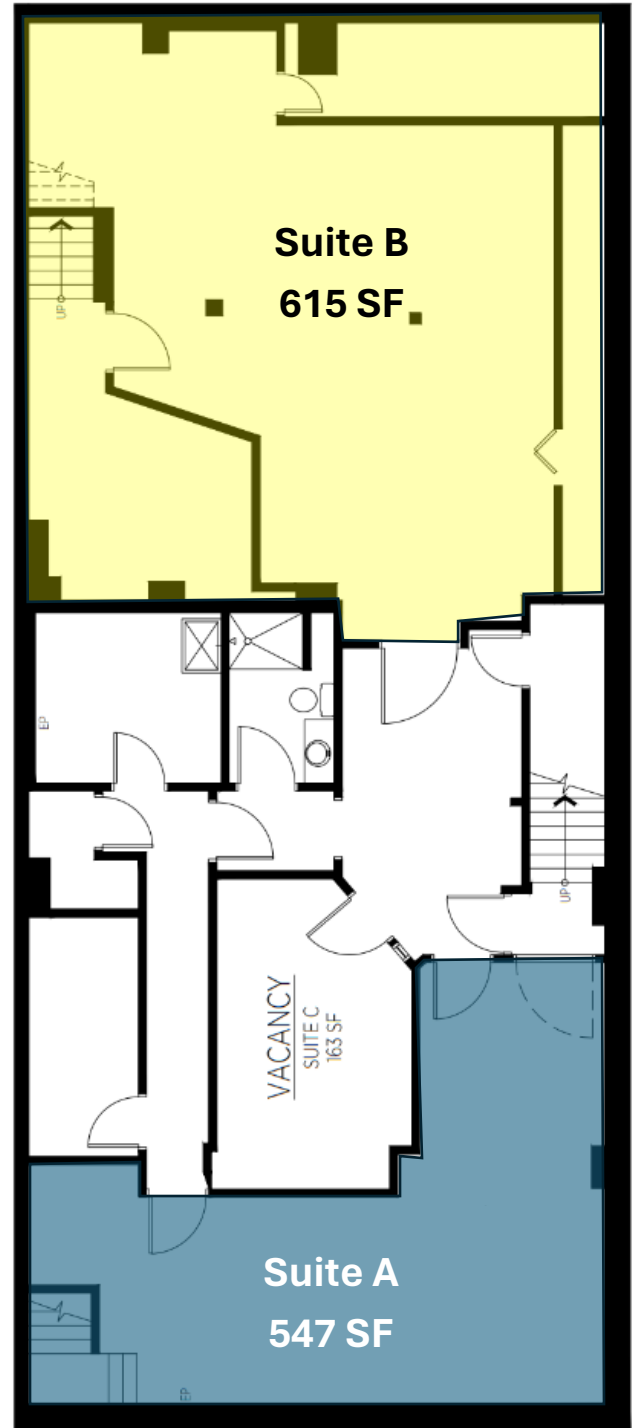
White Bear Ave Retail Center

3607 White Bear Ave, White Bear Lake, MN 55110

UPPER LEVEL FLOOR PLAN



LOWER LEVEL FLOOR PLAN



NORTH



CROSSROADS
PROPERTIES

Mark Young

Zac Houle

7250 Hudson Boulevard N, Suite 160, Oakdale, MN 55128

www.crossroadsproperties.net

D: 651-233-2435 | M: 651-307-2371

D: 651-209-0520 | M: 651-248-7567