

# GREMLEY & BIEDERMANN

PLCS Corporation  
 LICENSE # 0429702

PROFESSIONAL LAND SURVEYORS

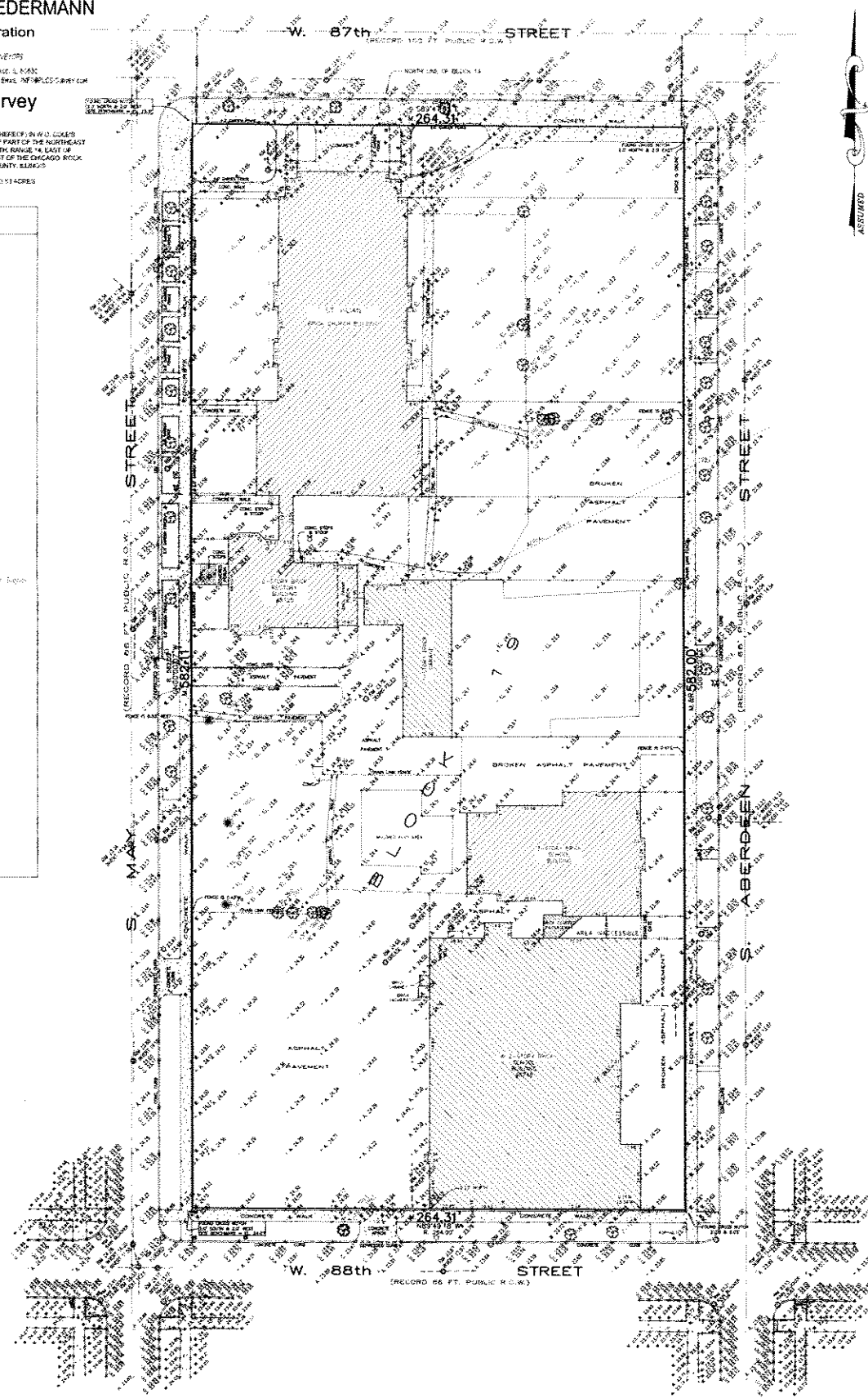
4325 NORTH ELSTON STREET, CHICAGO, IL 60630  
 TELEPHONE (773) 835-5122 FAX (773) 284-4444 EMAIL: INFO@PLCS.COM

## Plat of Survey

BLOCK 19 (EXCEPT THE NORTH 17 TO FEET THEREOF) IN W.D. COOK'S  
 SUBDIVISION OF THE NORTH 30 ACRES OF PART OF THE NORTHEAST  
 QUARTER OF SECTION 6, TOWNSHIP 27 NORTH, RANGE 14 EAST OF  
 THE THIRD PRINCIPAL MERIDIAN IN 15043 WEST OF THE CHICAGO RIVER,  
 ISLAND AND PENINSULA TOWNSHIP, COOK COUNTY, ILLINOIS  
 TOTAL PROPERTY AREA: 159,842.52 SQ. FT. • 3.57 ACRES

### Legend:

○	Stake - iron
○	Stake - CG
○	Stake - steel
○	Stake - cast
○	Iron pin
○	Cast Stone Corner Marker
○	Top Chain Nail
○	Corner - concrete
○	Corner - iron
○	Asph. Bottle Box
○	Asph. Right Hand
○	Stake - Metal
○	Asph. Right Hand
○	Telephone Man
○	Telephone vault
○	Telephone Pedestal
○	Public Telephone
○	Combination Pedestal
○	Utility Pole
○	Gas Meter
○	Electric Meter
○	Electric vault
○	Electric Hand Hole
○	Electric Box
○	Electric Marker
○	Electric Pedestal
○	Electric Light Pole
○	Electric Traffic Signal
○	Electric Light Pole with Traffic Signal
○	Electric Traffic Control Box
○	Electric Traffic Vault
○	Electric Ground Light
○	Electric Mounting Arm Light
○	Gas Buffalo Box
○	Gas meter hole
○	Gas Marker
○	Gas Valve
○	Gas MH
○	Gas vault
○	Cable TV Pedestal
○	Tree - Deciduous
○	Tree - Evergreen
○	Flowing Marker
○	Flowing Post
○	Top Post
○	Map Box
○	Survey Post
○	Block Rock
○	Self Setting
○	Unpublished Monument
○	Light Sprinkler
○	Weld Connection
○	Fire Alarm
○	Flag Pole



CREWLEY & BIEDERMANN  
 PLCS CORPORATION  
 LICENSE # 0429702  
 4325 NORTH ELSTON STREET, CHICAGO, IL 60630  
 TELEPHONE (773) 835-5122 FAX (773) 284-4444 EMAIL: INFO@PLCS.COM  
 2011-15933-001

PROPERTY NOTES  
 Note: All S.M. (Stake) and all Measured Distances (Meters),  
 Distances are marked in feet and decimal parts thereof. Corners of points SURVEYED, building by name and of  
 new mark any difference in bearing or distance.  
 For monuments, building lines, and other structures not shown on survey, see other to your adjacent block.  
 Consult the plat and local building regulations.  
 All dimensions shall be obtained by actual measurement upon this plat.  
 Measurements of address points were to: see at the client's request.  
 Survey information taken from the Bearing Book, Elevation Table and Control Column of plat # 15933-001.  
 COPYRIGHT: GREWLEY & BIEDERMANN, INC. 2011. All Rights Reserved.

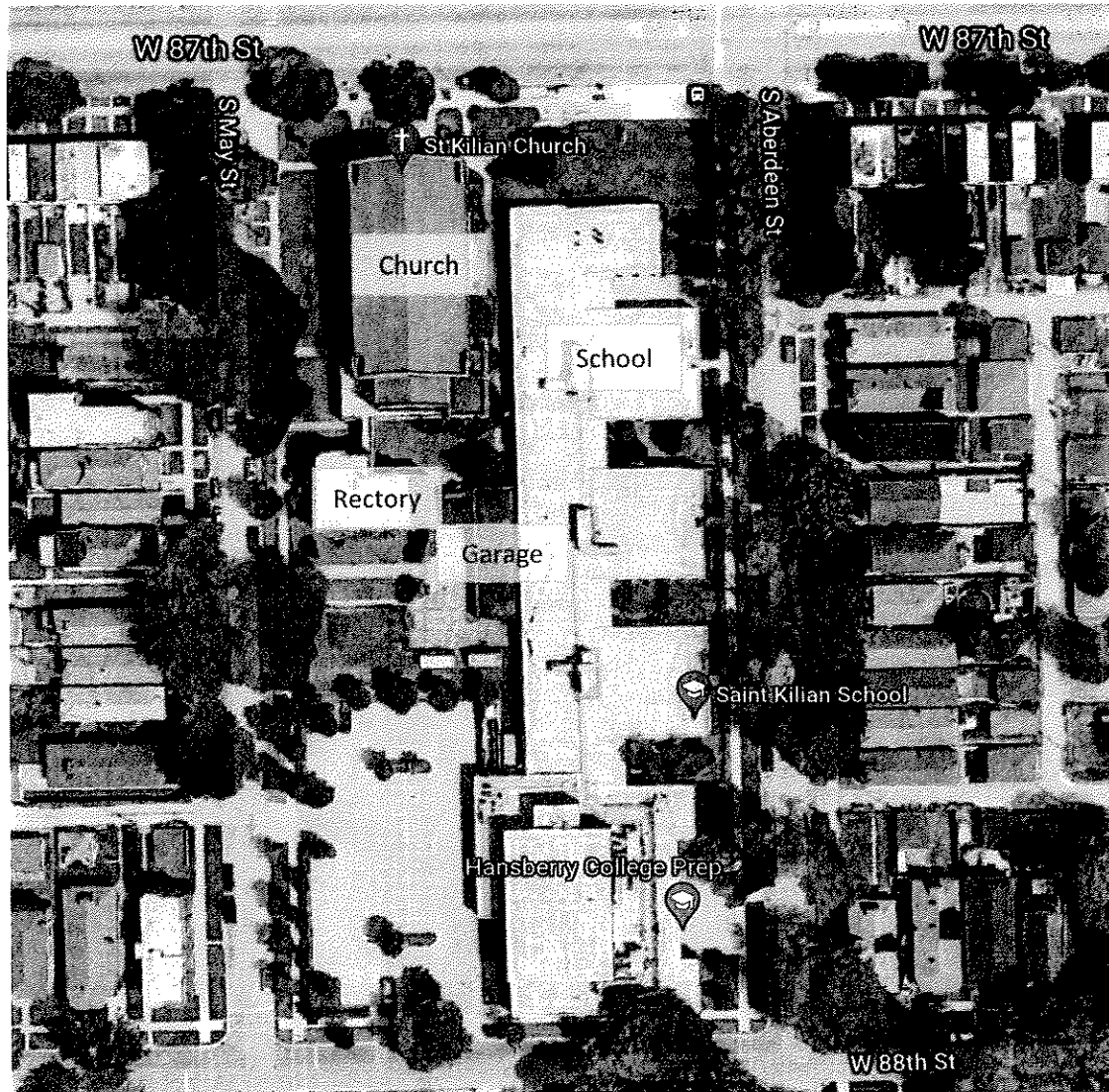
PRIMARY BENCHMARK:  
 BENCHMARK # 4223  
 ELEVATION = 25.917  
 LOCATION: W. 89th STREET & S. RACINE AVENUE  
 ABOUT 12 FEET NORTH OF THE NORTH LINE OF W. 89th STREET  
 ABOUT 15 FEET WEST OF WEST LINE OF S. RACINE AVENUE;  
 MARK CUT AT NORTHEAST CORNER OF STONE WATER TABLE AT NORTHEAST  
 CORNER OF 1 STORY BRICK BUILDING.  
 SECONDARY BENCHMARK:  
 BENCHMARK # 3725  
 ELEVATION = 25.358  
 LOCATION: W. 87th STREET & ADA STREET  
 MARK CUT NEAR SOUTHEAST CORNER OF STONE DOURSSEL 1.8 FEET WEST OF  
 SOUTHEAST CORNER OF 2 STORY BRICK BUILDING #340  
 BENCHMARK IS ON NORTH LINE OF W. 87th STREET AND ABOUT 94 FEET EAST OF  
 WEST LINE OF ADA STREET.

Date of Survey:  
 County of Cook, Ill.  
 We, GREWLEY & BIEDERMANN, INC. hereby certify that we have surveyed the above described  
 property and that the plat herein drawn is a correct representation of said survey conducted to a  
 temperature of 62° Fahrenheit.  
 Field measurements completed on DECEMBER 20, 2011  
 Signed on Dec 20, 2011  
 [Signature]  
 PROFESSIONAL SURVEYOR  
 LICENSE # 0429702  
 My license expires November 30, 2012.  
 The professional service conforms to the current Illinois minimum standards for a boundary survey.





# Archdiocese of Chicago Facilities Assessment Project



Location Map 