

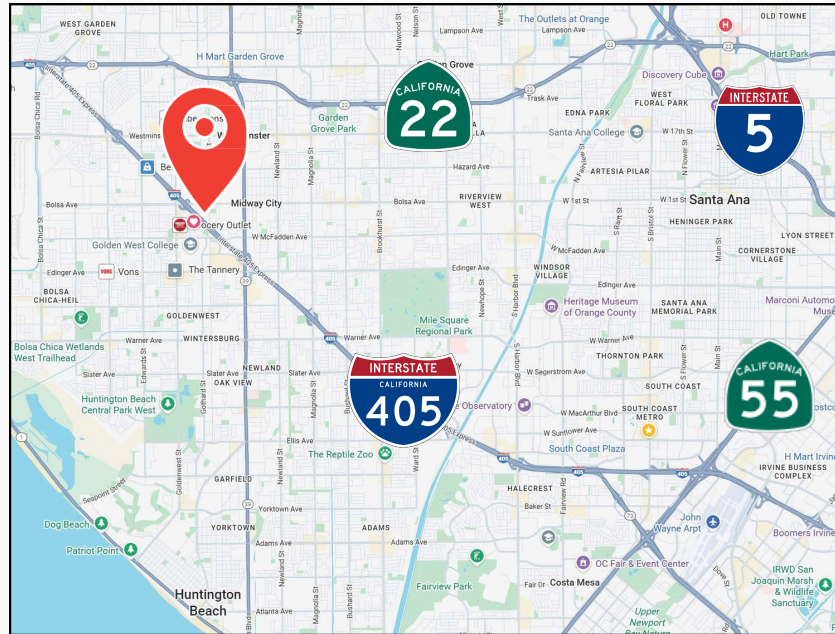
FOR SUBLEASE ± 6,000 TOTAL SQ. FT. TWO ADJACENT INDUSTRIAL BUILDINGS



15134 & 15138 GOLDENWEST CIRCLE, WESTMINSTER, CA 92683

PROPERTY HIGHLIGHTS

- Goldenwest Circle Business Park
- ± 6,000 SF - Two (2) Units 3,000 SF Each
- ± 1,700 SF Office Space Combined - See attached Floor Plan
- ± 100-600 Amps, 120/240V (verify)
- 16' Warehouse Clearance
- Single Story Flex/Warehouse Space
- Close Proximity to the 22 & 405 Freeways



KYLE WILLIAMS, SIOR

SENIOR VICE PRESIDENT

(949) 293-6788

KYLE@ASHWILLASSOCIATES.COM

CA DRE LIC.02015940

This Information contained herein has not been verified by real estate brokers. Although we have no reason to doubt its accuracy, we do not guarantee it. Buyers and tenants should verify information independently.



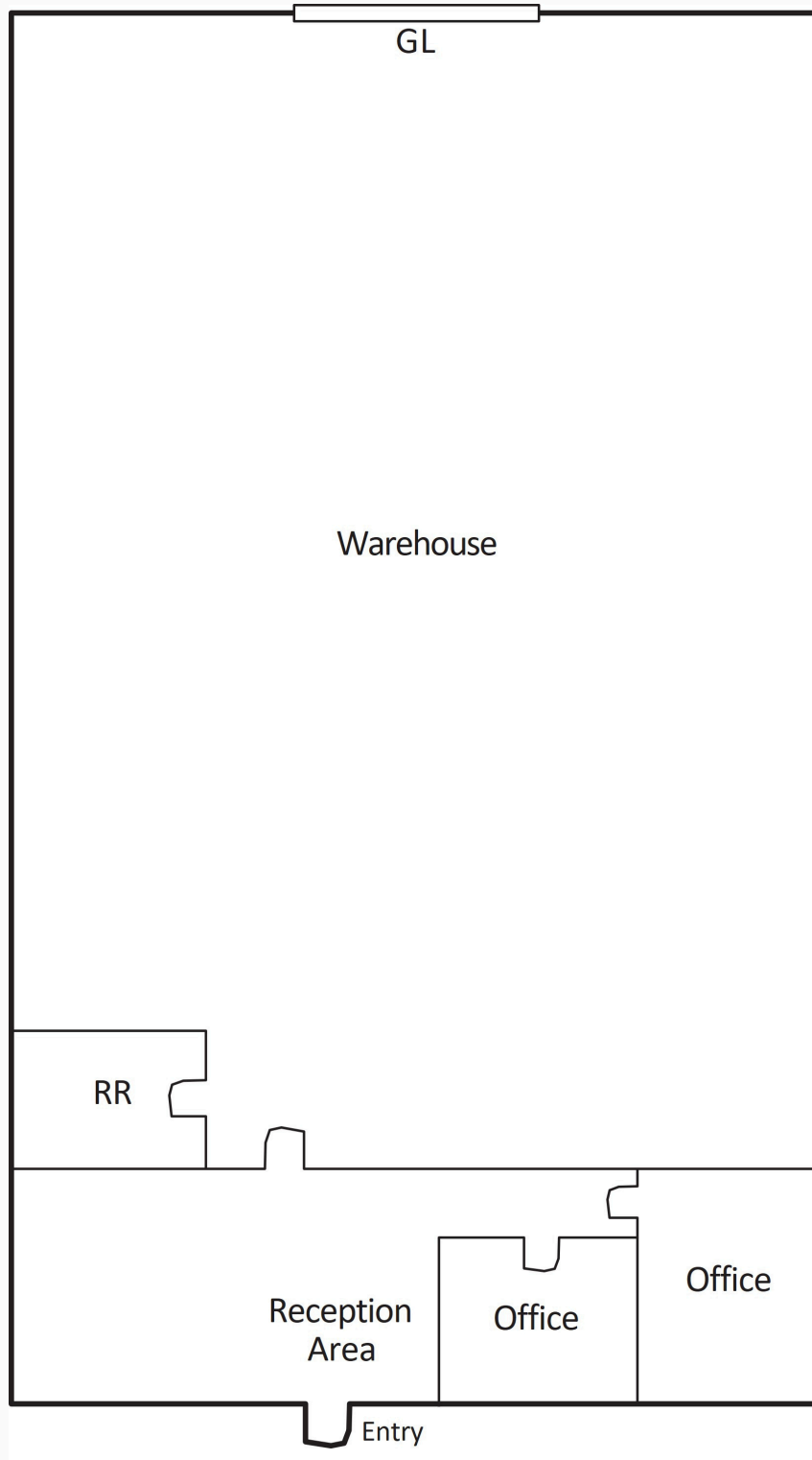
CORP. DRE LIC.01291393

FOR SUBLEASE

± 6,000 TOTAL SQ. FT.

TWO ADJACENT INDUSTRIAL BUILDINGS

Suite 15134



This Information contained herein has not been verified by real estate brokers. Although we have no reason to doubt its accuracy, we do not guarantee it. Buyers and tenants should verify information independently.



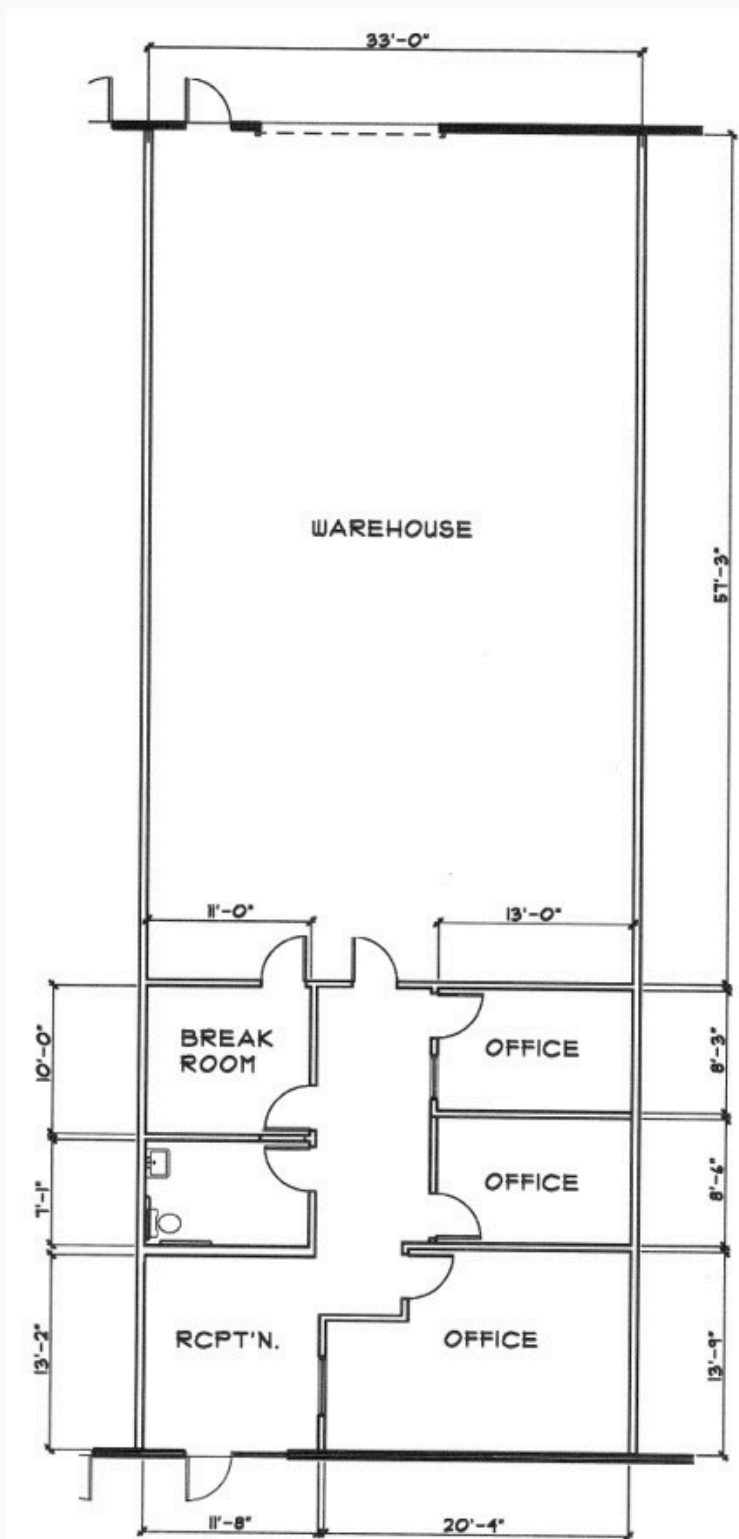
CORP. DRE LIC.01291393

FOR SUBLEASE

± 6,000 TOTAL SQ. FT.

TWO ADJACENT INDUSTRIAL BUILDINGS

Suite 15138



This Information contained herein has not been verified by real estate brokers. Although we have no reason to doubt its accuracy, we do not guarantee it. Buyers and tenants should verify information independently.



CORP. DRE LIC.01291393

FOR SUBLEASE

± 6,000 TOTAL SQ. FT.

TWO ADJACENT INDUSTRIAL BUILDINGS

SITE PLAN



This Information contained herein has not been verified by real estate brokers. Although we have no reason to doubt its accuracy, we do not guarantee it. Buyers and tenants should verify information independently.



CORP. DRE LIC. 01291393