

Medical Office Space

12 Salt Creek Lane

Hinsdale, Illinois 60521

PROPERTY DETAILS

- 4-story, 60,997 square foot office building in the Salt Creek Medical Campus
- Flexible suite sizes available up to 5,230 square feet
- New ownership completing upgrades and a building modernization program
- Exclusive 100% medical tenancy, creating the premier medical campus in Hinsdale
- Adjacent to AMITA Health Cancer Institute
- Newly completed Hinsdale Surgical Center located on campus at 10 Salt Creek Lane
- Great access via full-interchange at Ogden and I-294



Contact

Brian Edgerton
+1 630 693 0671
bedgerton@hiffman.com

Adam Johnson
+1 630 317 0729
ajohnson@hiffman.com

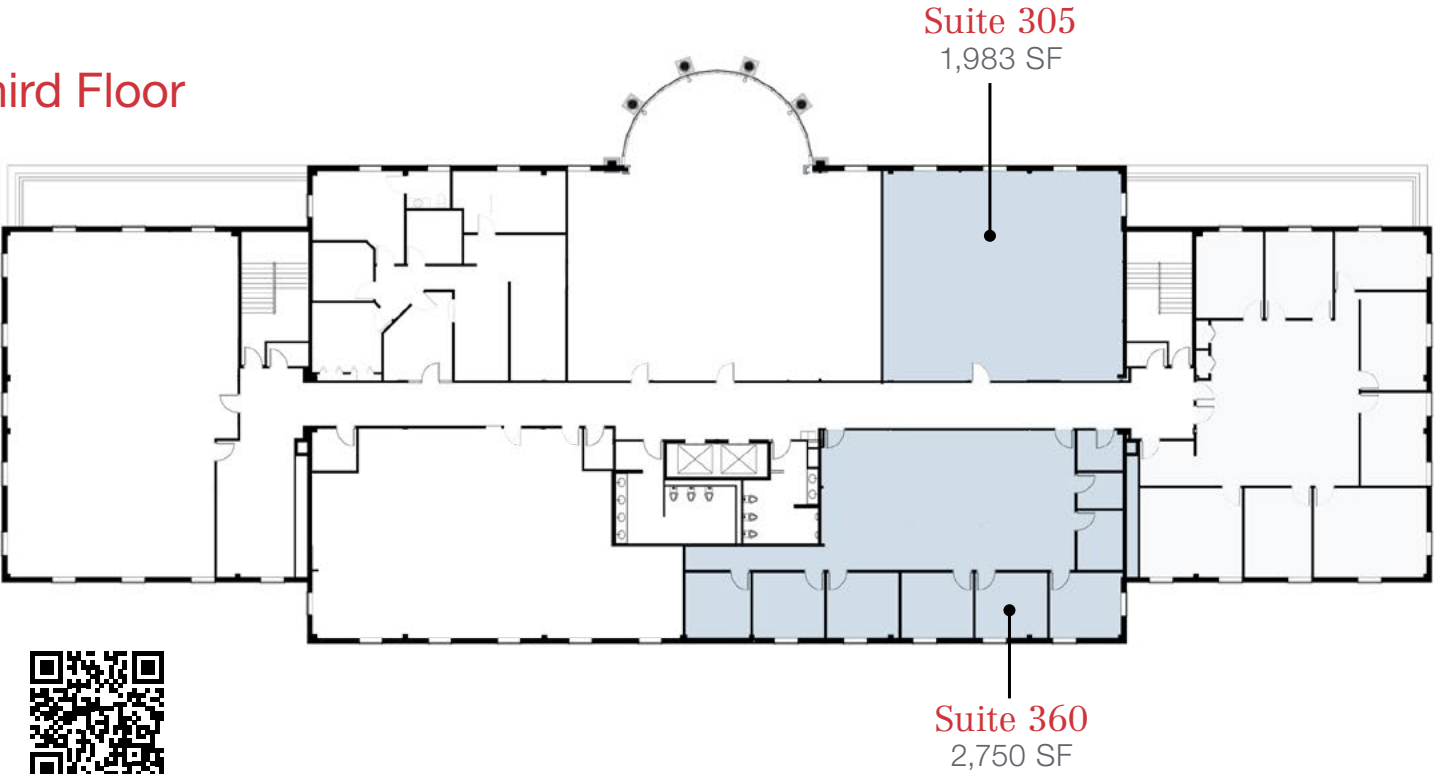
Tom Gnadt
+1 630 693 0659
tgnadt@hiffman.com

One Oakbrook Terrace
Suite 400
Oakbrook Terrace, Illinois 60181
+1 630 932 1234

hiffman.com

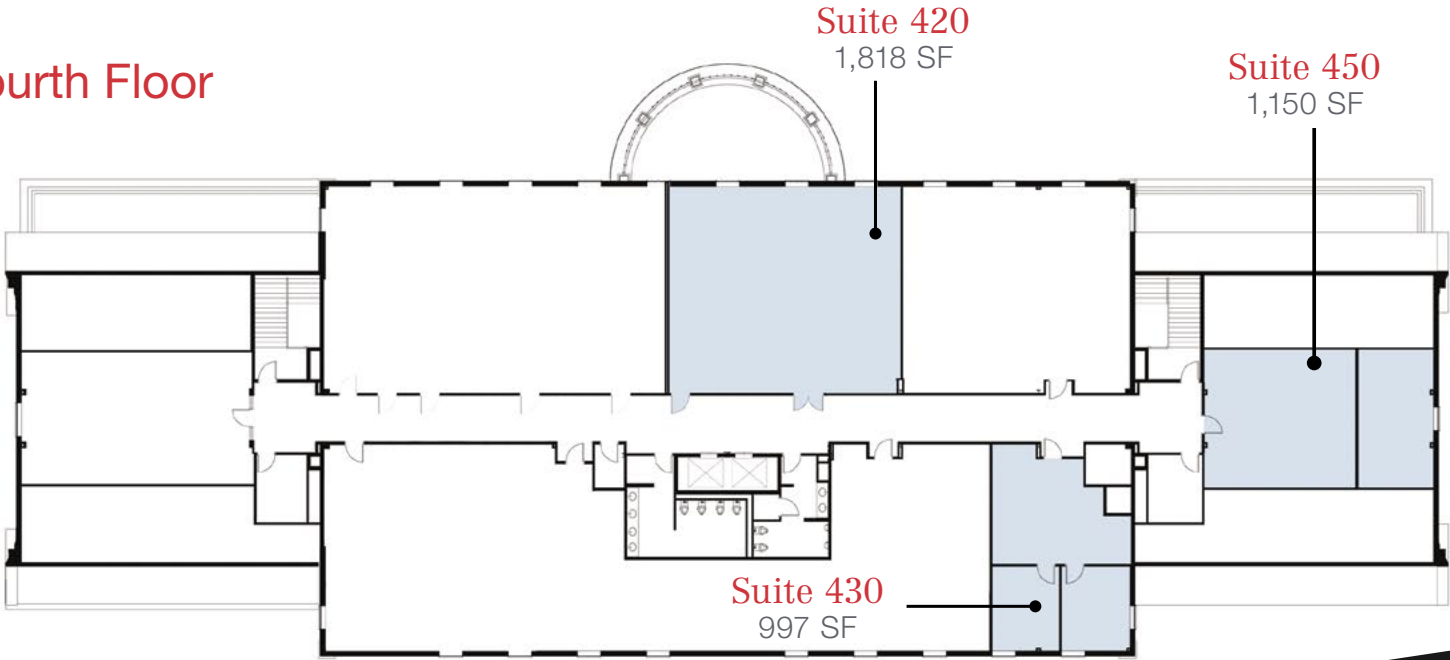
NO WARRANTY OR REPRESENTATION, EXPRESS OR IMPLIED, IS MADE AS TO THE ACCURACY OF THE INFORMATION CONTAINED HEREIN, AND THE SAME IS SUBMITTED SUBJECT TO ERRORS, OMISSIONS, CHANGE OF PRICE, RENTAL OR OTHER CONDITIONS, PRIOR SALE, LEASE OR FINANCING, OR WITHDRAWAL WITHOUT NOTICE, AND OF ANY SPECIAL LISTING CONDITIONS IMPOSED BY OUR PRINCIPALS NO WARRANTIES OR REPRESENTATIONS ARE MADE AS TO THE CONDITION OF THE PROPERTY OR ANY HAZARDS CONTAINED THEREIN ARE ANY TO BE IMPLIED.

Third Floor



[Property Website](#)

Fourth Floor



One Oakbrook Terrace
Suite 400
Oakbrook Terrace, Illinois 60181
+1 630 932 1234