

# 1200 E 5TH

FOR LEASE || ARTS DISTRICT

*district*  
REALTY GROUP

# 1200 E 5TH | ARTS DISTRICT

**ADDRESS:** 1200 E. 5th Street Los Angeles, CA 90013

**ASKING RATE:** \$10,500/ Month MG

**INTERIOR SPACE:** 1,268 RSF +/-

**PATIO AREA:** 4,800 RSF +/-

**PARKING:** Plentiful Free Street Parking + Paid Adjacent Lot (*Entire Parking Lot Available For An Additional Charge*)

**CURRENT USE:** Restaurant/Wine Bar (Type 41 Beer/Wine CUP)\*

## PROPERTY HIGHLIGHTS

- Immaculate Turnkey Kitchen and FF&E
- 2 Type 1 Hoods
- Other Potential Uses: Bar, Lounge, Market, Brewery\*
- Prime Arts District Location Across From Urth Caffe
- Excellent Corner Location at 5th and Colyton With High Visibility Signage Available
- Neighbors: Urth Caffe, SAMPA, Tatsu Ramen, Barker Block Lofts, Bavel, Girl & The Goat, Alloy, and Many Others!
- Dry Storage/Office Area Onsite

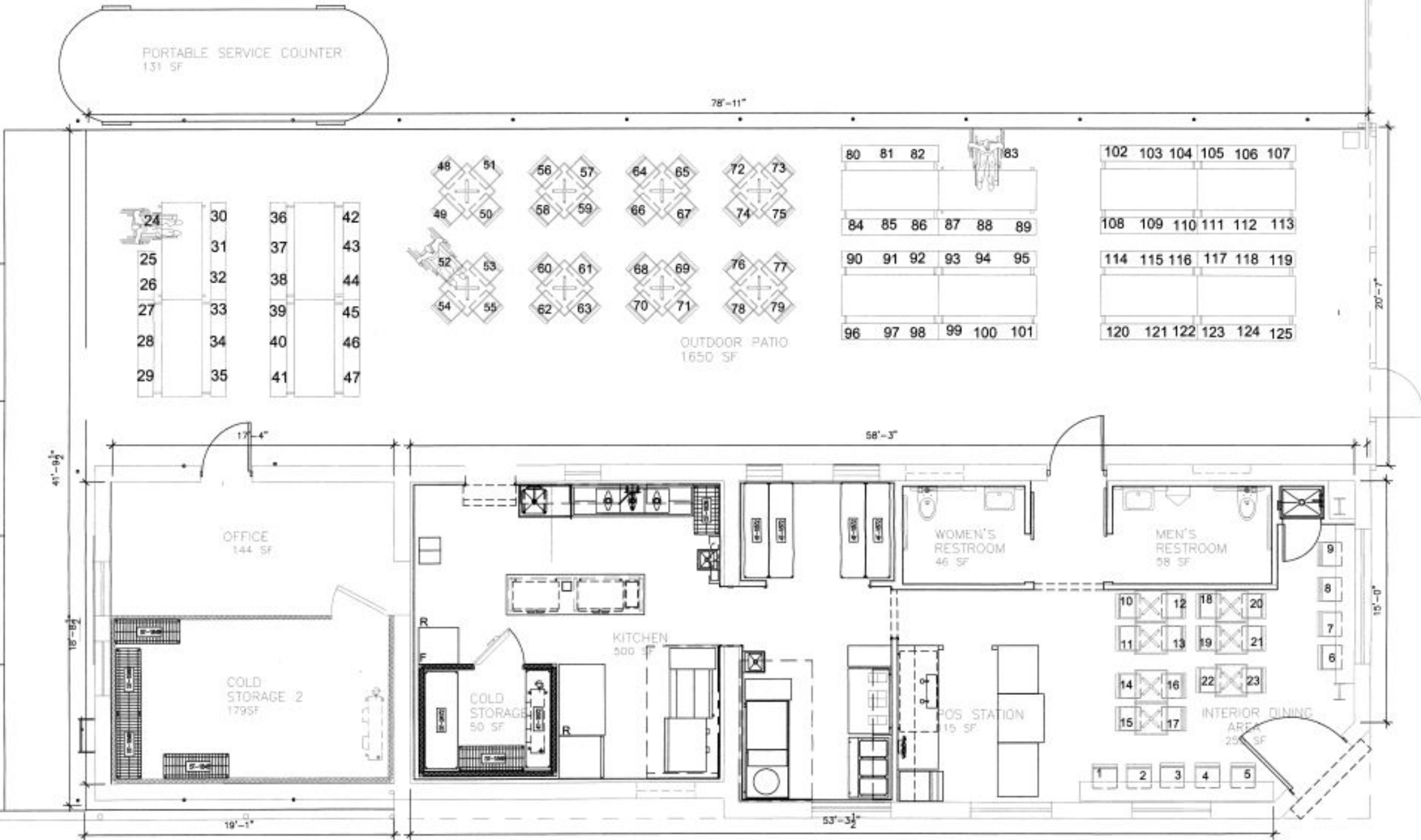
*\*Subject to City Approval - Tenant Must Verify with City all Acceptable Legal Uses and Obtain all Approvals from the City and Government for Tenant's Proposed Use*

# DETAILS

*district*  
REALTY GROUP

# FLOOR PLAN

COLYTON STREET







*district*  
REALTY GROUP

**EON I. LEW**

DRE: 01730294

OFFICE: 213 769 6262

EMAIL: [eon@districtrealtygroup.com](mailto:eon@districtrealtygroup.com)

[www.districtrealtygroup.com](http://www.districtrealtygroup.com)

© 2025 District Realty Group. District Realty Group has obtained the information above and in this brochure from sources we believe to be reliable; however, we have not verified its accuracy and make no guarantee, warranty or representation about it. It is submitted subject to the possibility of errors, omissions, change of price, FF&E, rental or other conditions, prior sale, lease or financing, or withdrawal without notice. We include projections, opinions, assumptions or estimates for example only, and they may not represent current or future performance of the property. You and your tax and legal advisors should conduct your own investigation of the property and transaction. *\*All uses, sizes, information, and dimensions contained herein must be verified by buyer/tenant and subject to terms and conditions.*