

TRIPLE DRIVE-THRU

PETERSBURG OPPORTUNITY



FOR LEASE

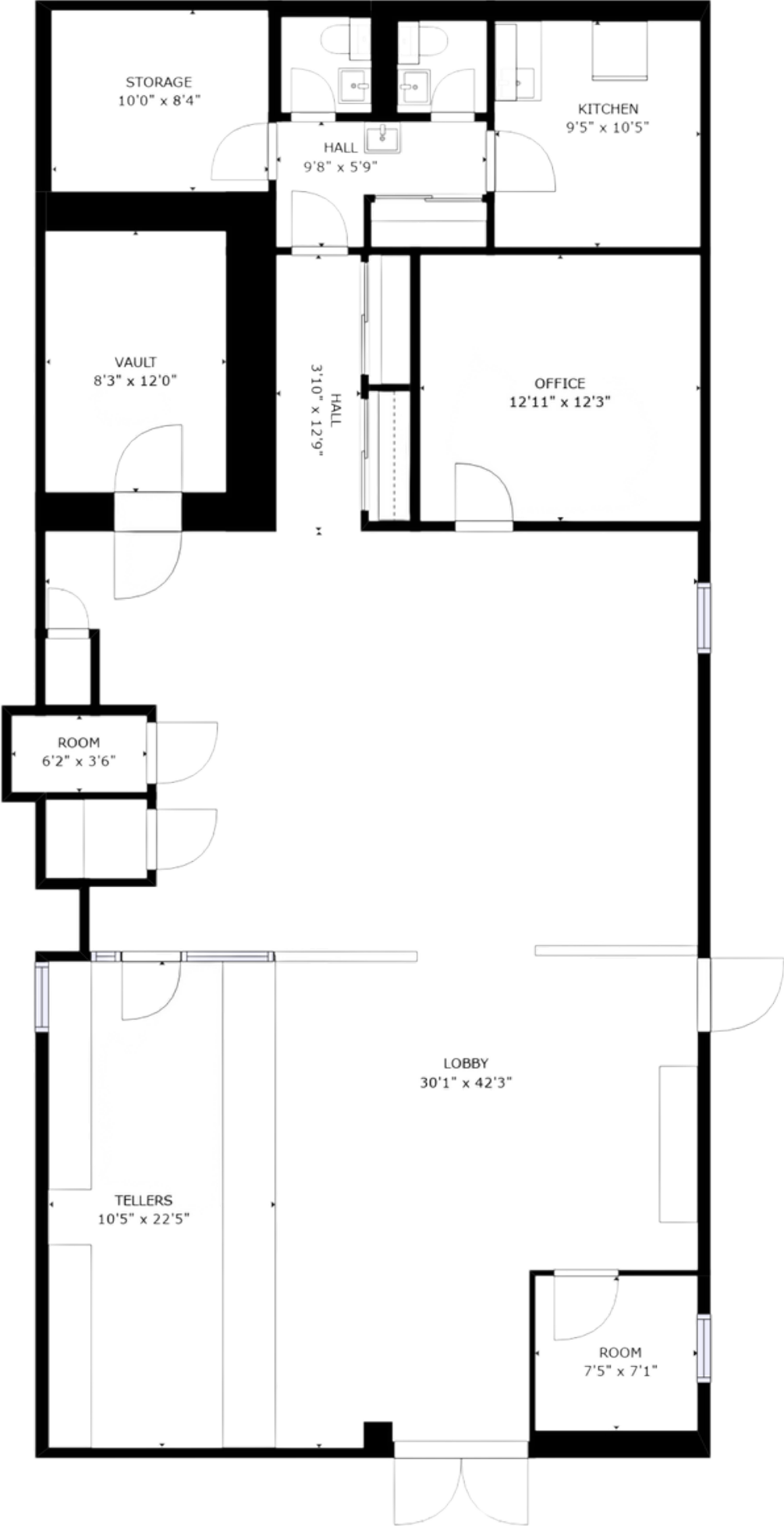
Former bank location, squarely in the center of great demographics for a mile in all directions.

Join **Food Lion**, **McDonald's**, and **CVS** in serving this vibrant community.

- 2,380 SQUARE FT
- TRIPLE DRIVE THRU
- 29 PARKING SPACES
- 12' X 8' BANK VAULT
- FORMER BANK

1941 S SYCAMORE ST - PETERSBURG, VA 23805

FOR LEASE - 1941 S SYCAMORE ST - PETERSBURG, VA 23805







BRYA
ROBINSON
804-798-0000

ROBINSON
REAL ESTATE

1941 S SYCAMORE ST - PETERSBURG, VA 23805