

FOR LEASE

THE LOFTS

41- 801 CORPORATE WAY | PALM DESERT, CA



HIGHLY IMPROVED SHOWROOM/OFFICE SUITES - 3,000 SF to 6,634 SF

SUITE 4 - 6,634 SF, \$.95 PER SF MODIFIED GROSS

SUITES 12 & 13 - 3,000 SF EACH, \$.95 PER SF MODIFIED GROSS

- Air-conditioned, beautifully improved showroom, with kitchen on the first floor in Suites 12 & 13. Suites are currently combined
- Lighting and other improvements in Suites 12 & 13
- Great central location near Cook St.
- Ample parking



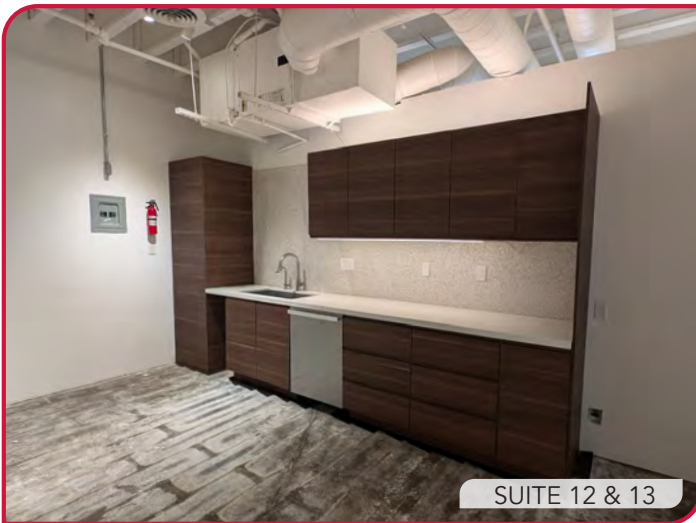
Maggie Montez
mmontez@leedesert.com
760.346.2520
LIC #01070683

Shawna Strange
sstrange@leedesert.com
760.346.2533
LIC #01718495

All information furnished regarding property for sale, rental or financing is from sources deemed reliable, but no warranty or representation is made to the accuracy thereof and same is submitted to errors, omissions, change of price, rental or other conditions prior to sale, lease or financing or withdrawal without notice. No liability of any kind is to be imposed on the broker herein.

FOR LEASE
THE LOFTS

41- 801 CORPORATE WAY | PALM DESERT, CA



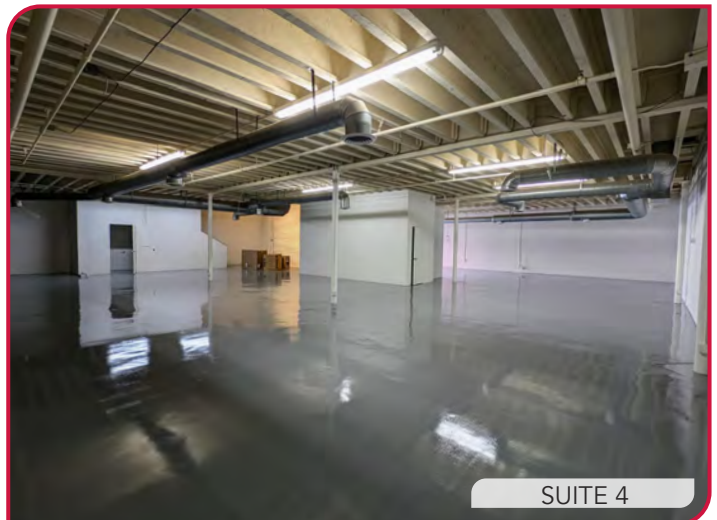
SUITE 12 & 13



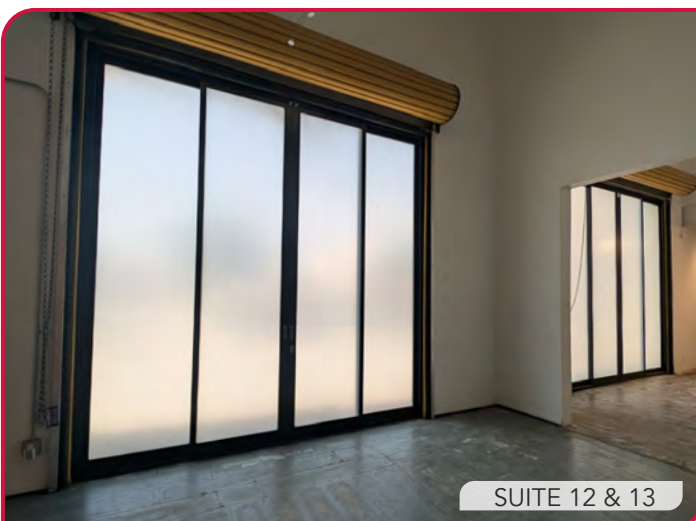
SUITE 4



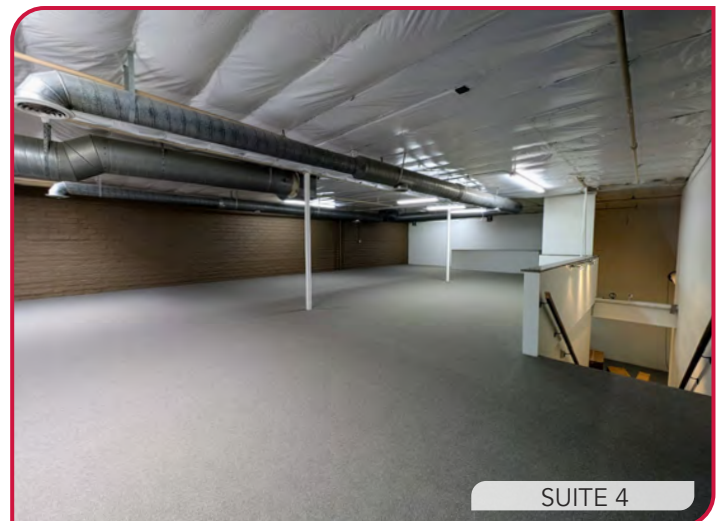
SUITE 12 & 13



SUITE 4



SUITE 12 & 13

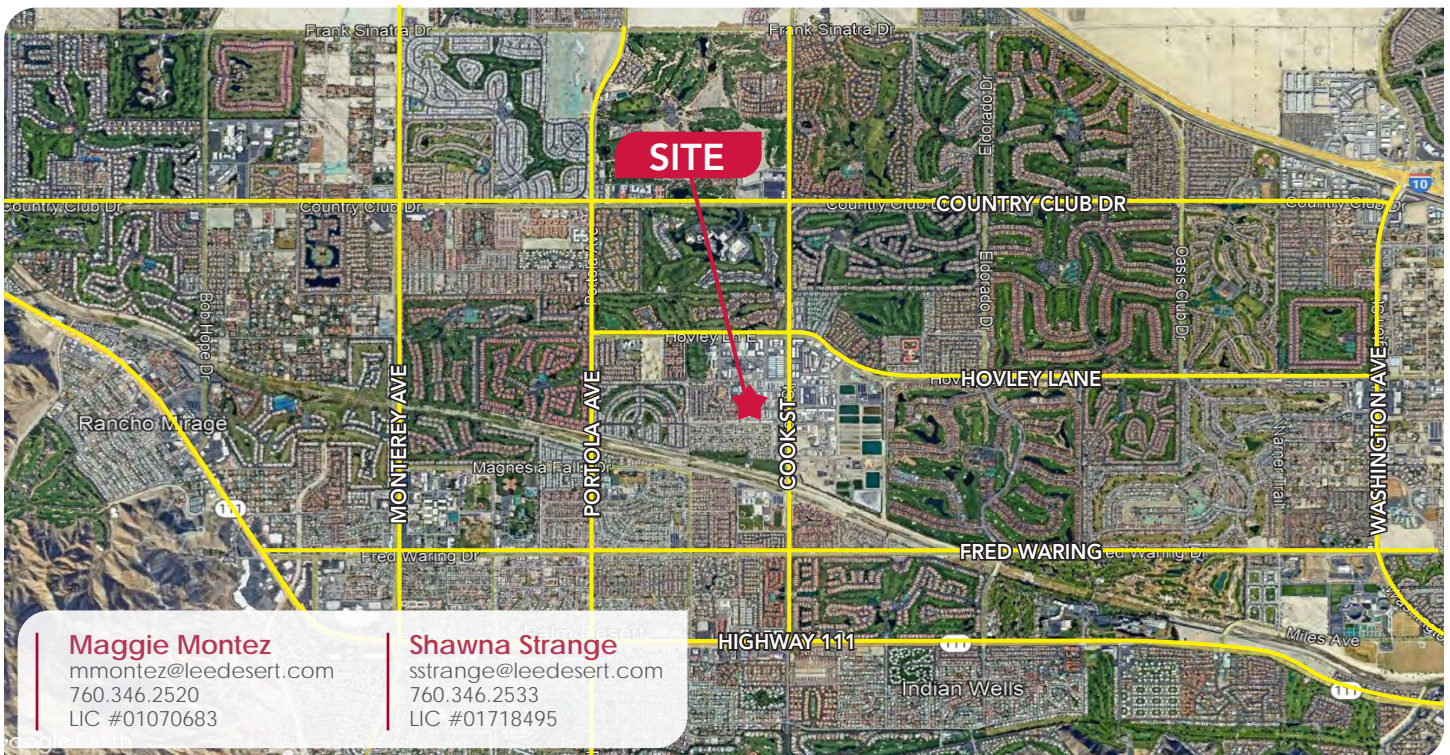
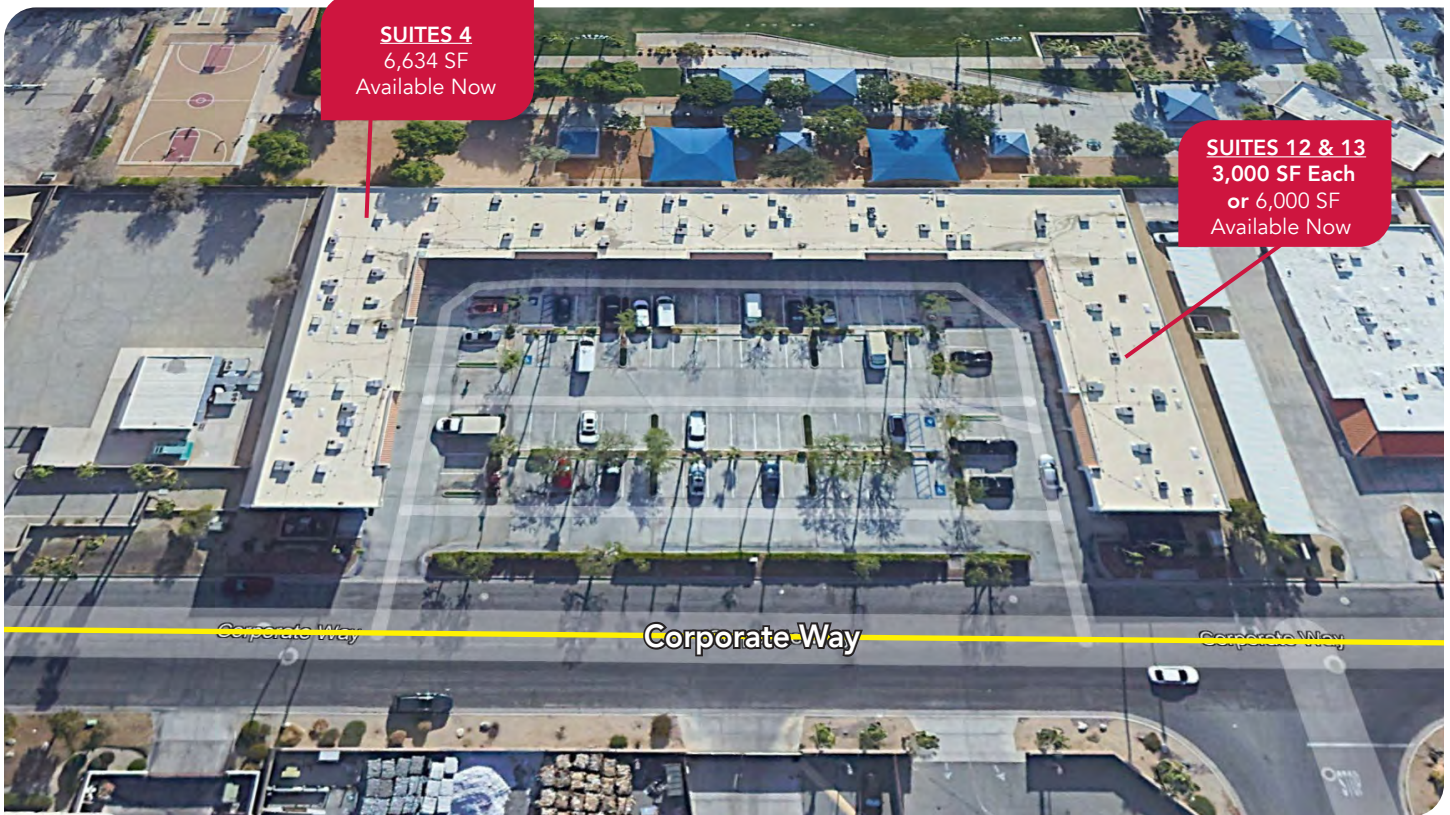


SUITE 4

All information furnished regarding property for sale, rental or financing is from sources deemed reliable, but no warranty or representation is made to the accuracy thereof and same is submitted to errors, omissions, change of price, rental or other conditions prior to sale, lease or financing or withdrawal without notice. No liability of any kind is to be imposed on the broker herein.

FOR LEASE
THE LOFTS

41- 801 CORPORATE WAY | PALM DESERT, CA



All information furnished regarding property for sale, rental or financing is from sources deemed reliable, but no warranty or representation is made to the accuracy thereof and same is submitted to errors, omissions, change of price, rental or other conditions prior to sale, lease or financing or withdrawal without notice. No liability of any kind is to be imposed on the broker herein.