

600 Columbus Avenue

NW CORNER OF COLUMBUS AVENUE & 89th STREETS | UPPER WEST SIDE

COLUMBUS CAFE

COLUMBUS CAFE



600 Columbus Avenue

NW CORNER OF COLUMBUS AVENUE & 89th STREETS
UPPER WEST SIDE

Size: 2,200 SF
Frontage: 100' Wraparound
Ceiling Heights: 12'
Possession: Arranged
Transportation: 1 B C

Property Highlights:

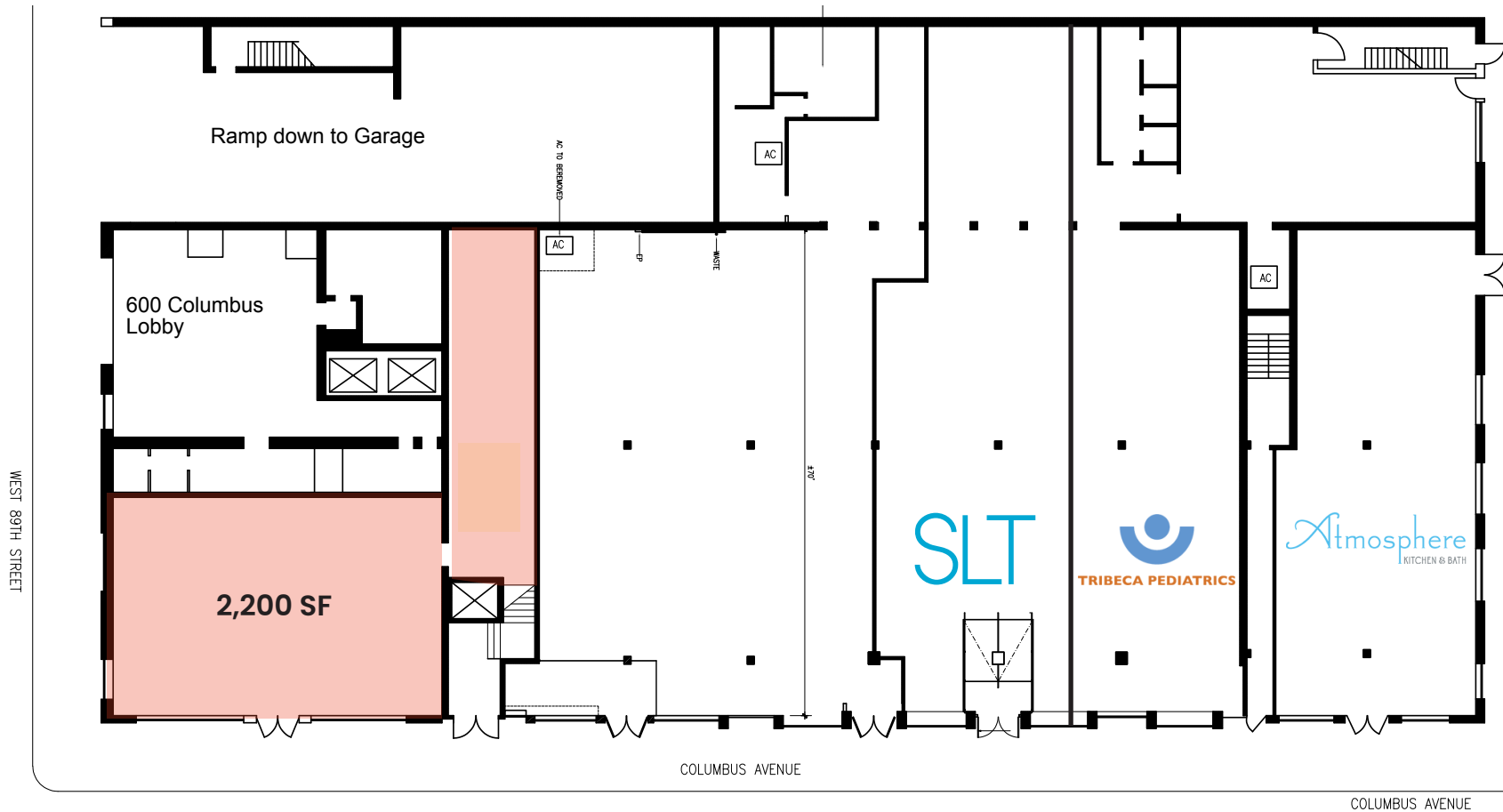
- Prime UWS corner at the base of a 166-unit rental building
- Excellent visibility with 100' of wraparound frontage
- Join recently opened SLT & Tribeca Pediatrics

Neighboring Tenants:



600 Columbus Avenue

NW CORNER OF COLUMBUS AVENUE & 89th STREETS
UPPER WEST SIDE



CONTACT OUR BROKERS
FOR MORE INFORMATION:

Marc Sitt
MSitt@ksrny.com
917.757.8863

Dorel Melloul
DMelloul@ksrny.com
347.922.4563



1385 Broadway - 22nd Floor
New York, NY 10018
212.417.9217
www.ksrny.com