



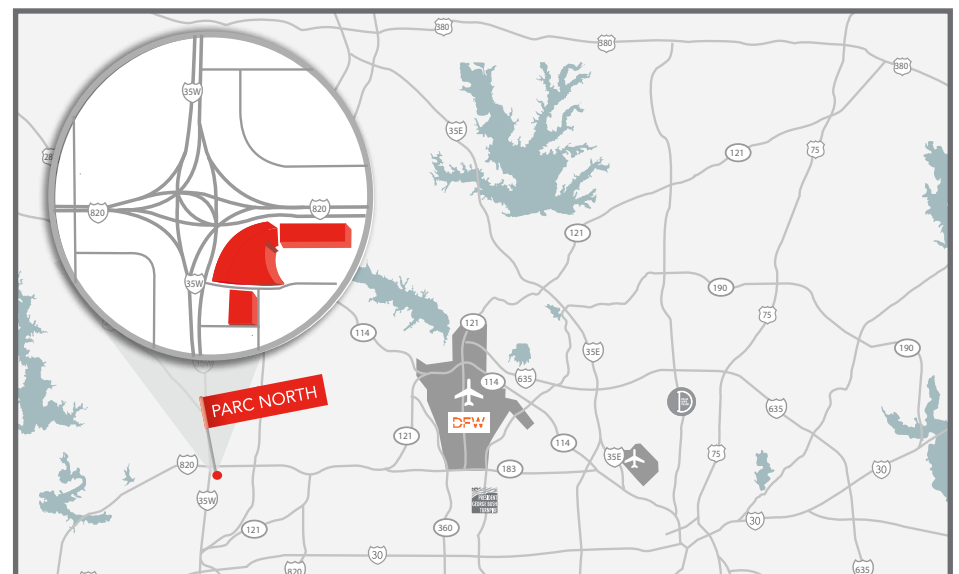
PARC NORTH

FORT WORTH

BUILDING FIVE

SOUTHEAST CORNER I35W & I820
2700 NE LOOP 820 | FORT WORTH, TX 76137

AVAILABLE SF:	42,033 SF	PARKING SPACES:	174 (Bldg Total)
MINIMUM DIVISIBLE:	7,982 SF	TRUCK COURT:	120'
OFFICE SF:	2,375 SF	DOCK HIGH DOORS:	37 - 9' x 10'
BLDG DEPTH:	150' - 160'	OVERSIZED RAMPS:	2 - 12' x 14'
CLEAR HEIGHT:	24'	SPRINKLER SYSTEM:	ESFR
TYPICAL BAY:	50' x 50'	CONFIGURATION:	Rear Load



NE LOOP 820 FREEWAY



FOR LEASING INFORMATION

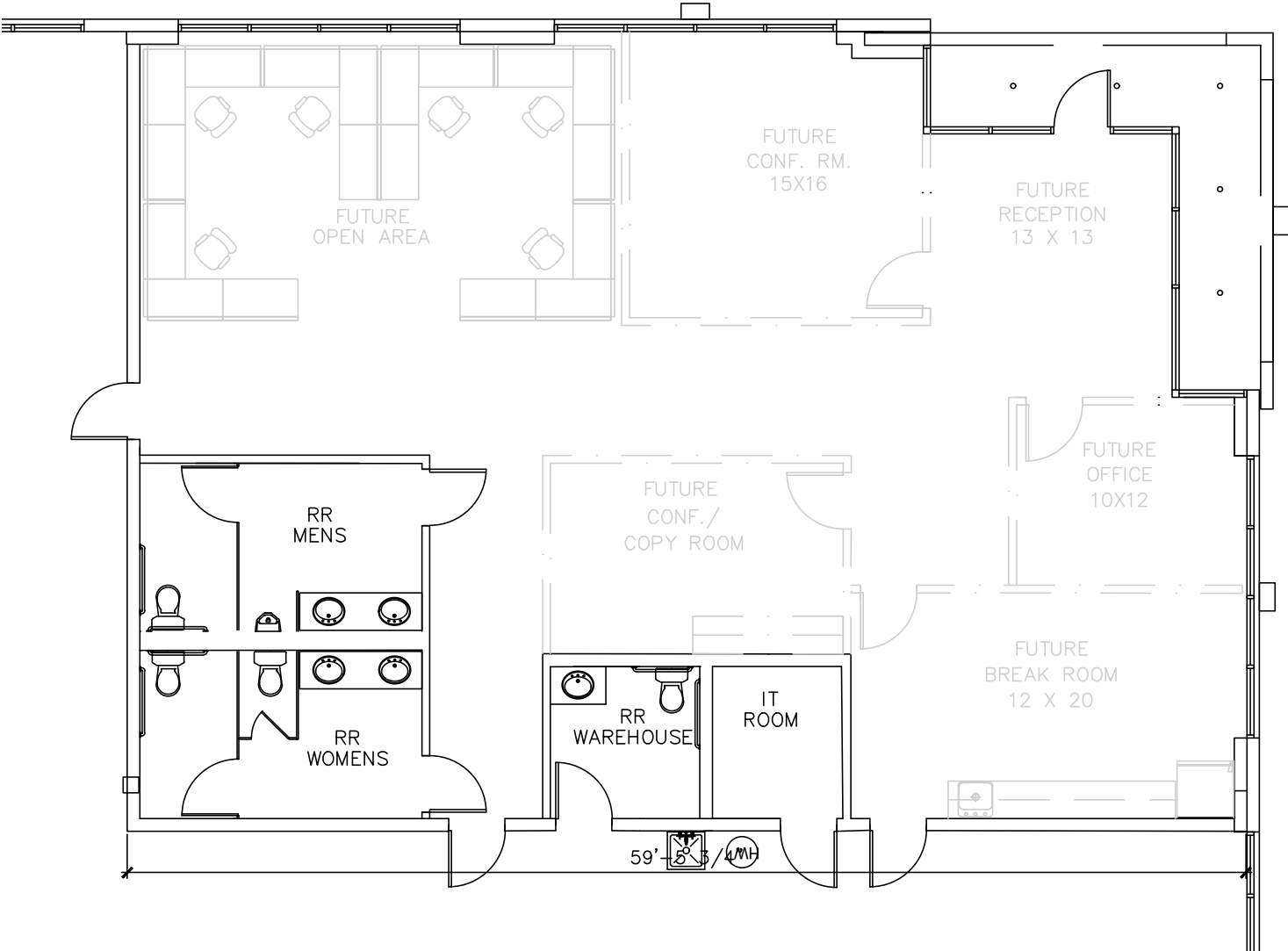


SETH KOSCHAK
817.877.1301
skoschak@streamrealty.com

FORREST COOK
817.877.1310
forrest.cook@streamrealty.com

OWNED & MANAGED BY





FOR LEASING INFORMATION



SETH KOSCHAK
817.877.1301
skoschak@streamrealty.com

FORREST COOK
817.877.1310
forrest.cook@streamrealty.com

OWNED & MANAGED BY



NE LOOP 820 FREEWAY



BUILDING ONE



BUILDING TWO



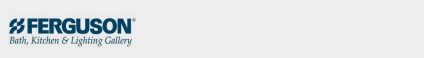
BUILDING THREE



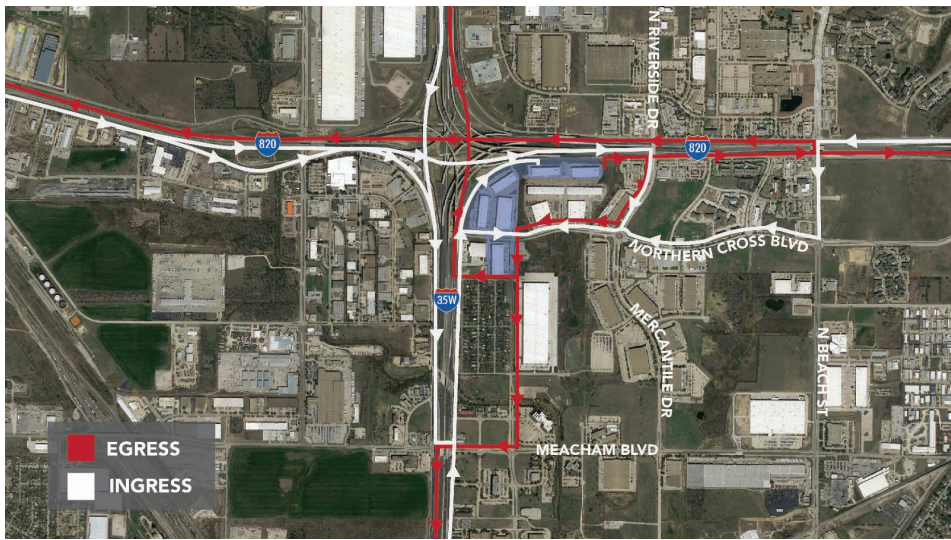
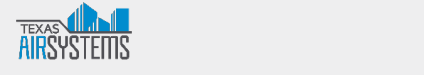
BUILDING FOUR



BUILDING FIVE



BUILDING SIX



FOR LEASING INFORMATION



SETH KOSCHAK
817.877.1301
skoschak@streamrealty.com

FORREST COOK
817.877.1310
forrest.cook@streamrealty.com

OWNED & MANAGED BY

