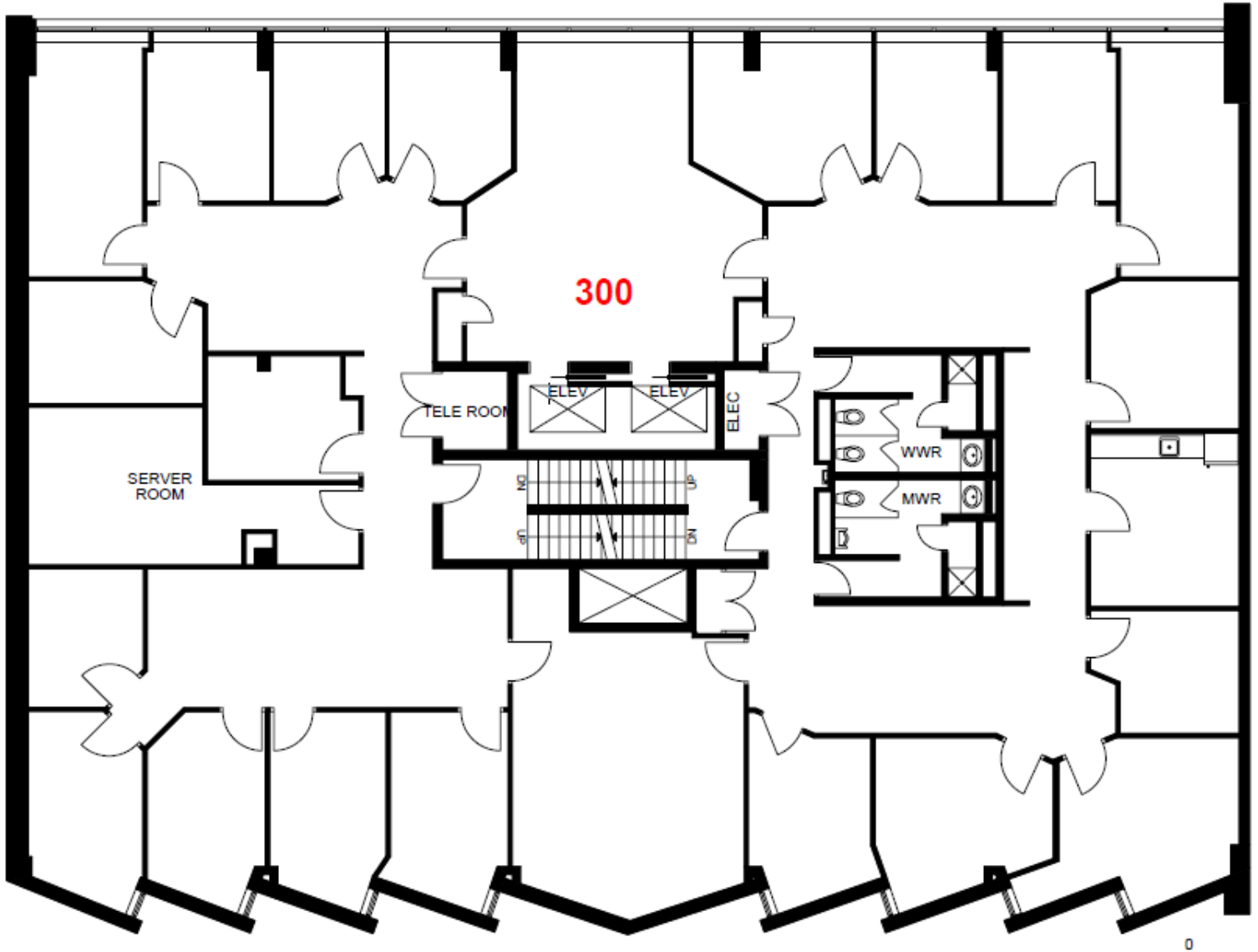




Located in the fringe core, between Metcalfe and Elgin, this property offers fantastic walkability to Parliament Hill, City Hall the Courthouse as well as Elgin Street restaurants and shops. This unit offers ready-for-use and built-out offices, boardrooms, and a reception area. If you are looking for a space that could be accommodated to suit your needs, this may be the place for you.

Unit Features

- Great Location
- Easily Accessible
- Close proximity to building's fitness center



THE ATTACHED DRAWINGS ARE PROVIDED FOR INFORMATION PURPOSES ONLY AND SHOULD NOT BE RELIED UPON. THE LANDLORD SHALL NOT BE HELD RESPONSIBLE FOR THE PURPOSE OF THE TENANT'S WORK AND SPACE PLANNING.

Property Details



Location
Downtown



Public Transit
OC Transpo Stops
nearby



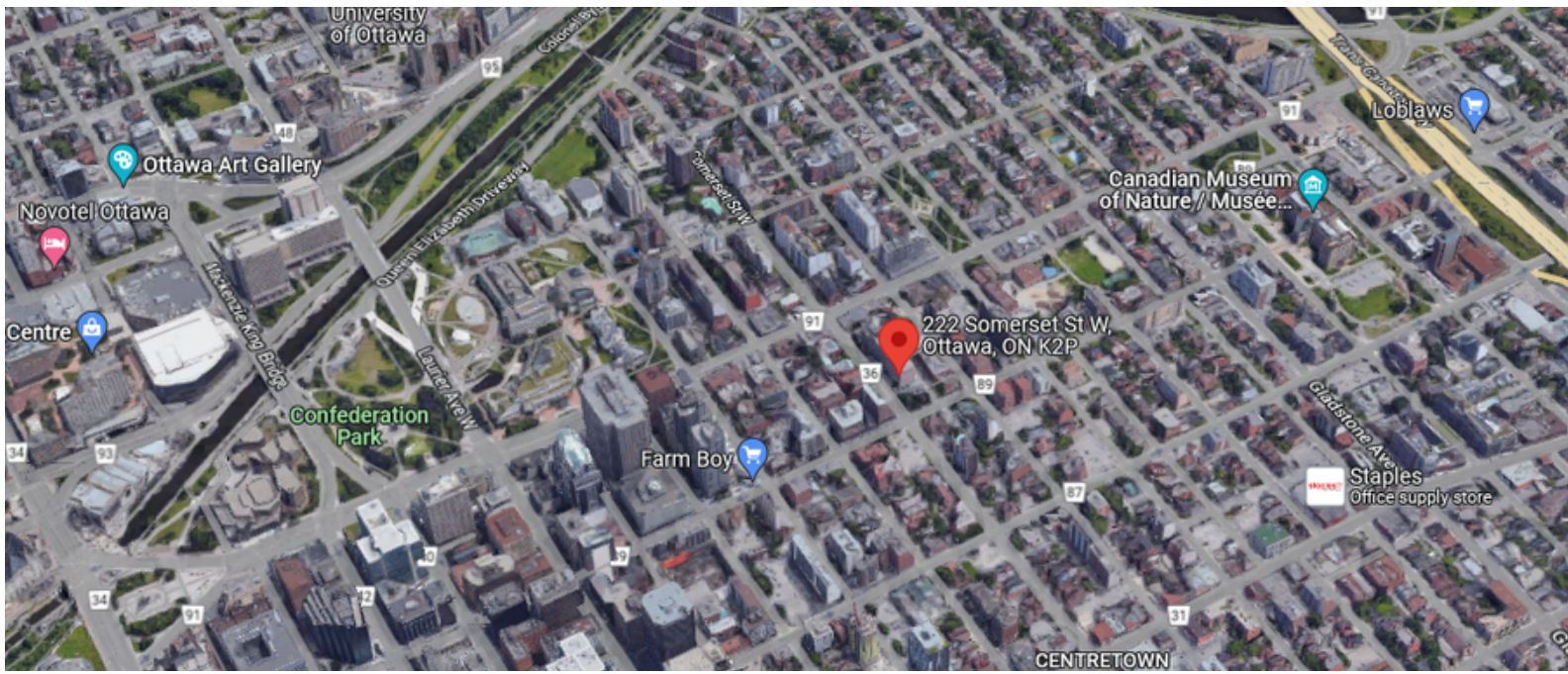
Accessibility
Elevators



Building
Stand Alone



Parking
Outdoor & Street



*Rendering



*Rendering



THE PROPERTIES GROUP MANAGEMENT LTD.
236 Metcalfe Street, Ottawa, ON K2P 1R3
(613) 369-5486 / leasing@prpgrp.com / www.thepropertiesgroup.ca