

# 1370

BROADWAY  
SE CORNER OF 37TH STREET  
MIDTOWN



PRIME HERALD SQUARE RETAIL  
AVAILABILITY LOCATED ALONG HIGHLY  
FOOT TRAFFICKED BROADWAY CORRIDOR

**ksr**

**SIZE:** *Ground Floor - 7,774 SF  
Selling Lower Level - 12,722 SF*

**FRONTAGE:** *85' on Broadway  
70' on 37th Street*

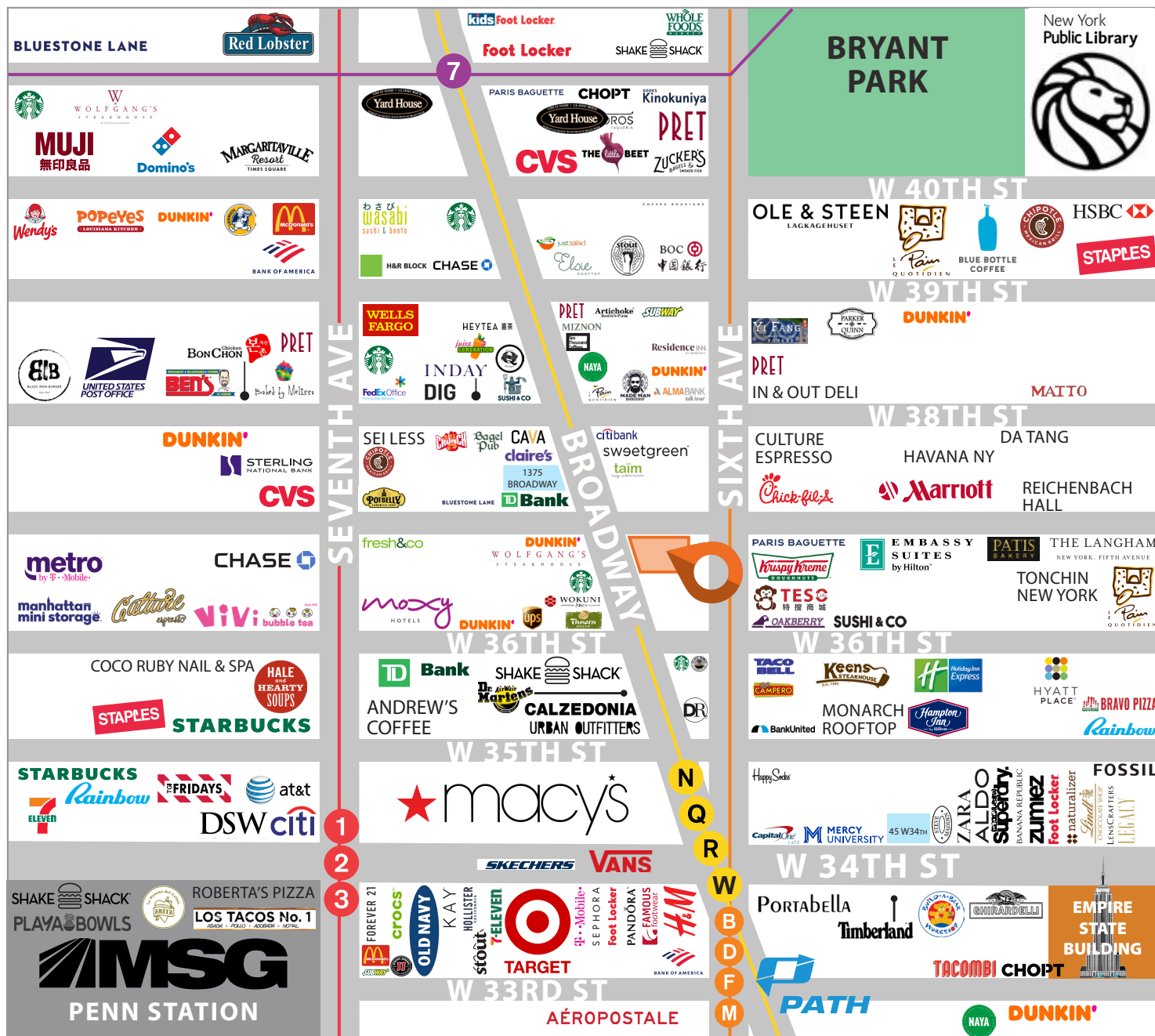
**CEILING HEIGHTS:** *20' Ground Floor  
11' Selling Lower Level*

**POSSESSION:** *Immediate*

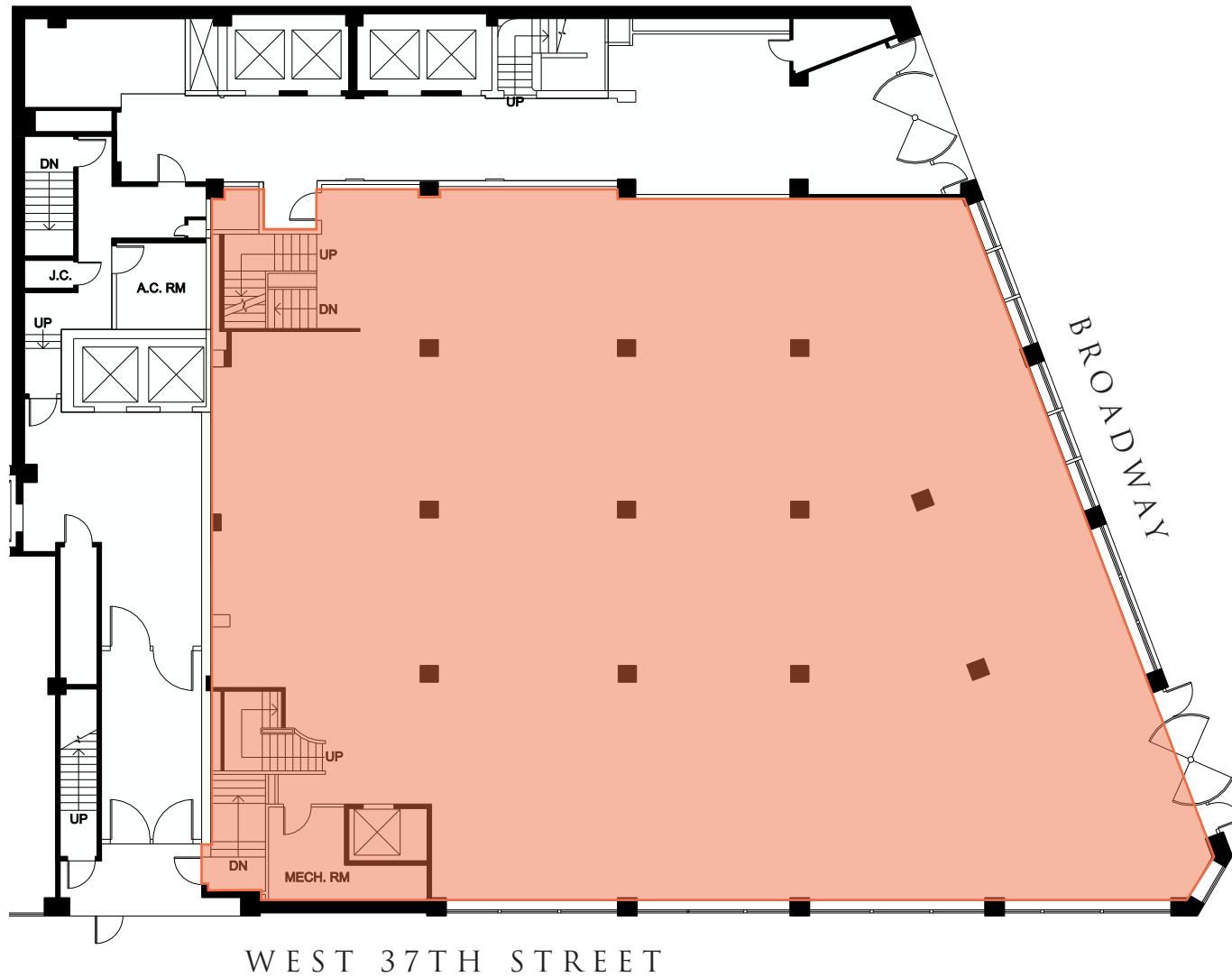
**TRANSPORTATION:** 

**HIGHLIGHTS:**

- Billboard signage available
- Space is divisible (see floor plans)
- Excellent national co-tenancy
- Prime Herald Square location
- Massive wraparound frontage
- High foot traffic area in dense residential/office neighborhood
- Steps away from Penn Station, Herald Square, and Bryant Park
- Neighboring tenants include: *Wolfgangs, Shake Shack, Panera Bread, Calzedonia, Wokuni (opening soon), Uban Outfitters, & many more!*

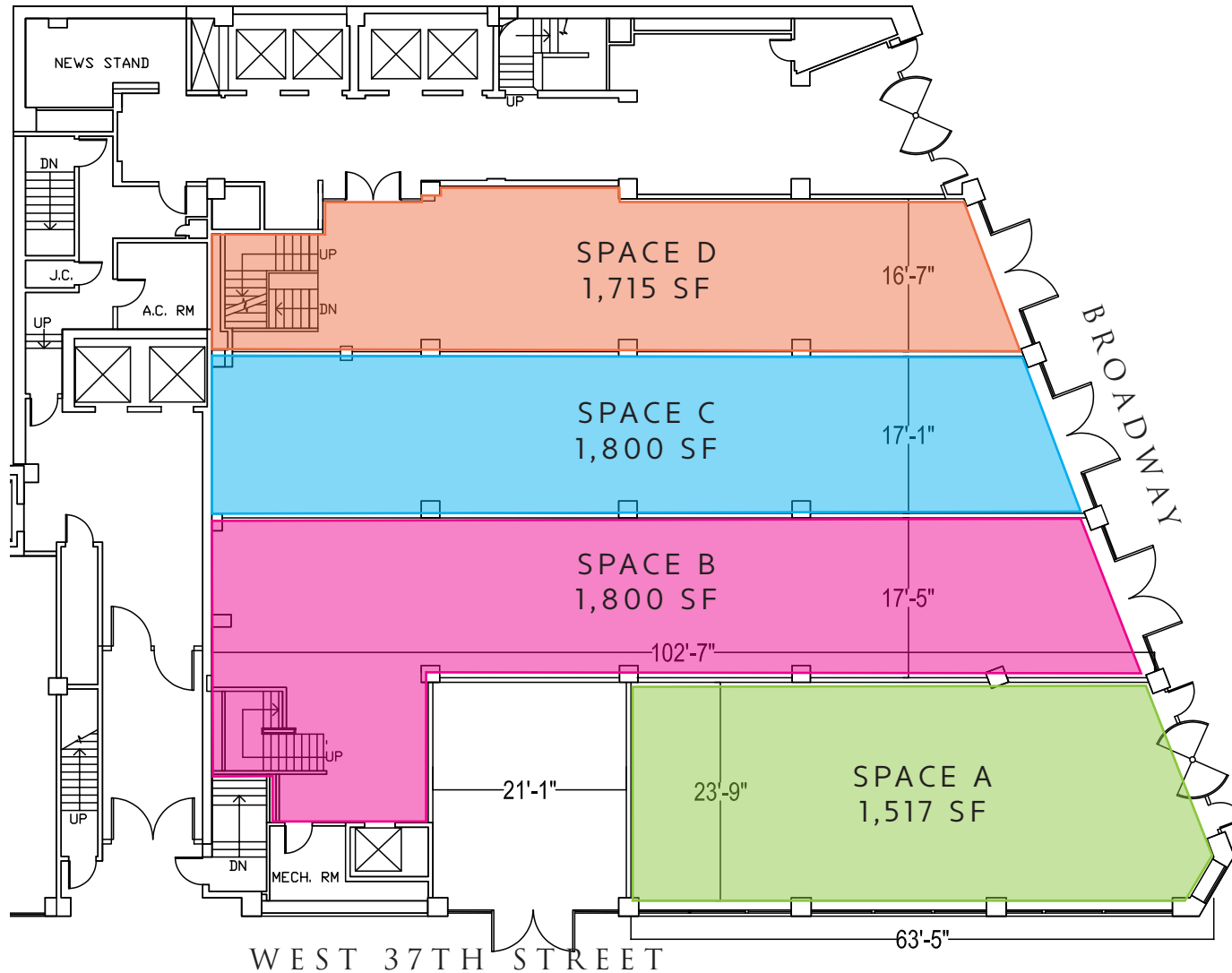


FLOOR PLAN:  
GROUND FLOOR - 7,774 SF

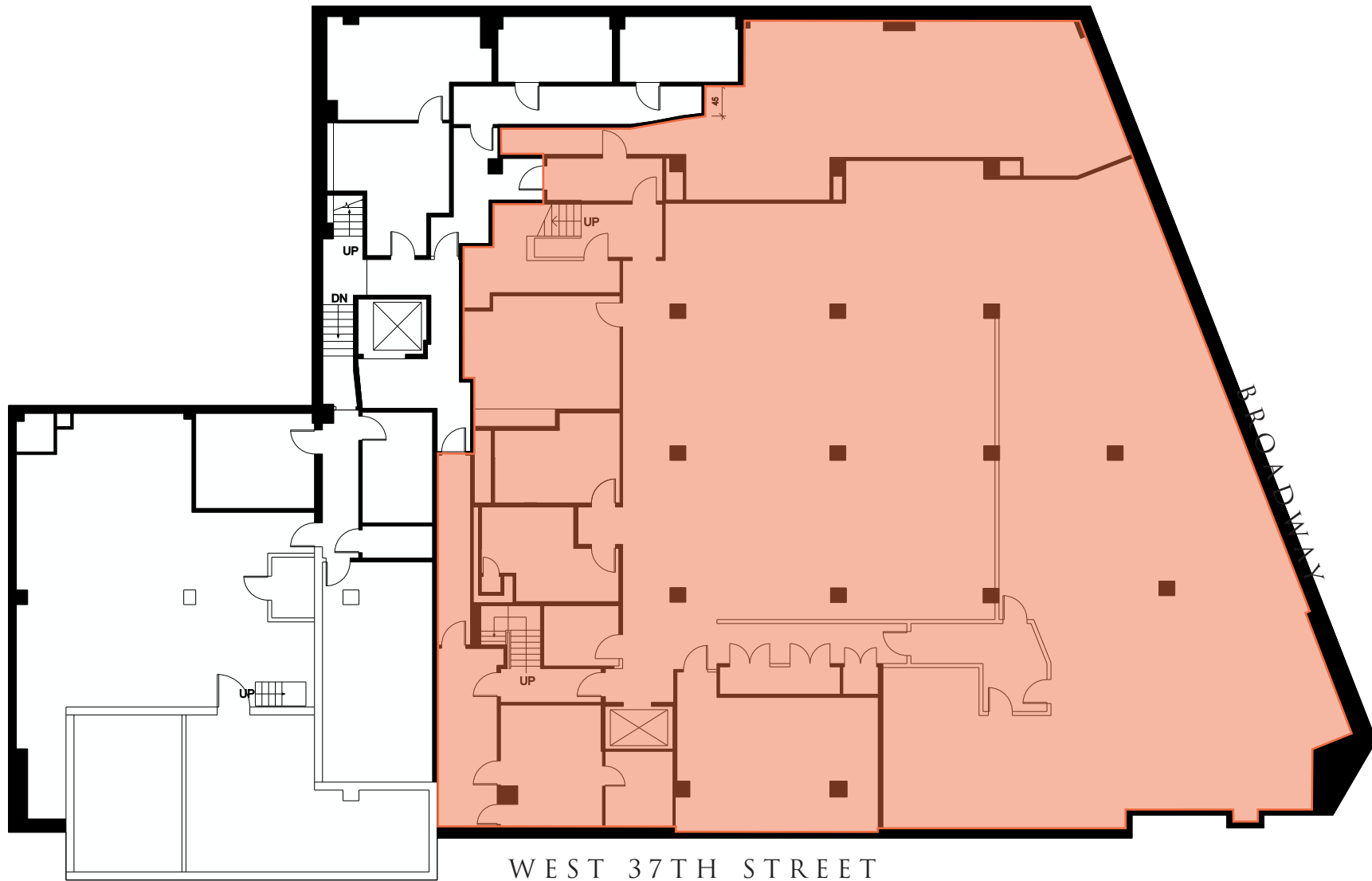




FLOOR PLAN:  
GROUND FLOOR (PROPOSED DIVISION 2)



FLOOR PLAN:  
USEABLE BASEMENT - 12,722 SF



# 1370

BROADWAY

**1370 Broadway** is situated in the heart of Midtown, just steps away from Manhattan's major commercial hub known as Herald Square.

Formed by the intersection of Broadway, Sixth Avenue (officially Avenue of the Americas), and 34th Street, Herald Square is named for the New York Herald newspaper, whose building was located on 35th Street from 1893 to the 1920s.

The square's most prominent feature is the elaborate Bennett Clock, named for Herald publisher James Gordon Bennett Jr. The monument features the Bellringers, dubbed "Guff" and "Stuff," and owls with flashing green eyes. Owls were Bennett's talisman, and the new massive granite gateposts, installed by the Partnership, feature bronze owl figures by sculptor Greg Lefevre.

Herald Square is a wonderful place to take a break from shopping and sightseeing: pull up a chair, enjoy some refreshments from the food kiosk operated by Wafels & Dinges, and rest your eyes on the Partnership's award-winning gardens. And be sure to catch Guff and Stuff ringing their bells every hour on the hour.



563K  
WORKPLACE POPULATION  
(1/2 MILE RADIUS)

\$123K  
AVERAGE INCOME

275K  
DAYTIME POPULATION

+100M  
ANNUAL COMMUTERS

# 1370

BROADWAY

SE CORNER OF 37TH STREET | MIDTOWN

FOR MORE INFORMATION,  
PLEASE CONTACT:

**FREDDY SOUID**

917.968.0329 | FSoud@ksrny.com

**JACK HAMADANI**

718.415.0095 | JHamadani@ksrny.com

**IKE BIBI**

347.417.2860 | IBibi@ksrny.com



All information supplied in this marketing presentation and/or flyer is from sources deemed reliable and is furnished subject to errors, omissions, modifications, removal of listings from sale/lease and to any listing condition. Any square footage, dimensions, floor plans and/or technical data set forth are approximations and are subject to further elaboration/confirmation.