



# NWC OLD 215 FRONTAGE RD & DAY ST MORENO VALLEY, CALIFORNIA 92518

## OFFERING SUMMARY

Lease Rate:	\$0.30 SF/month (NNN)
Available SF:	8.1 Acres
Lot Size:	8.1 Acres

## City Zone Approved Uses

- [https://moval.gov/city\\_hall/general-plan2040/Zoning/ExB-PermittedUseTable.pdf](https://moval.gov/city_hall/general-plan2040/Zoning/ExB-PermittedUseTable.pdf)

## Property Highlights

- Divisible
- Industrial Zone I/BP
- Excellent Freeway Access
- Level topography
- Can be delivered semi-improved or improved
- Short term or long-term leases

## Property Overview

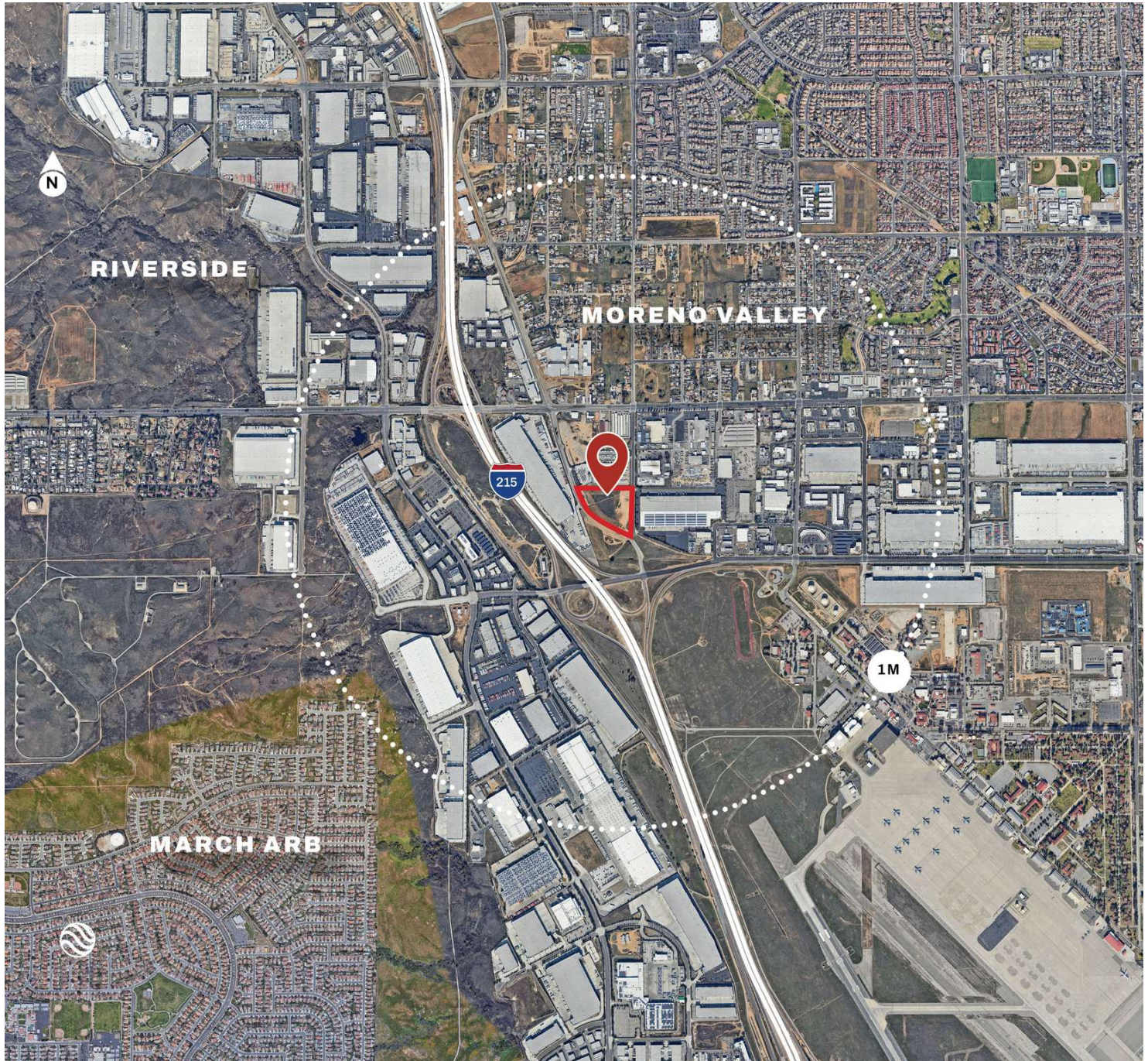
Discover an exceptional lease opportunity in Riverside's industrial hub at this property. Zoned Industrial Zone I/BP, the property offers a perfect fit for a range of industrial and business park uses. Boasting excellent freeway access, tenants can capitalize on seamless transportation links for efficient logistics and operations.

## Lidia Talavera

Executive Vice President  
909.243.7604  
LTalavera@naicapital.com  
CA DRE #01407598

No warranty, express or implied, is made as to the accuracy of the information contained herein. This information is submitted subject to errors, omissions, change of price, rental or other conditions, withdrawal without notice, and is subject to any special listing conditions imposed by our principals. Cooperating brokers, buyers, tenants and other parties who receive this document should not rely on it, but should use it as a starting point of analysis, and should independently confirm the accuracy of the information contained herein through a due diligence review of the books, records, files and documents that constitute reliable sources of the information described herein. Logos are for identification purposes only and may be trademarks of their respective companies. NAI Capital Commercial, Inc. CAL DRE Lic. #02130474





### Lidia Talavera

Executive Vice President

909.243.7604

LTalavera@naicapital.com

CA DRE #01407598

No warranty, express or implied, is made as to the accuracy of the information contained herein. This information is submitted subject to errors, omissions, change of price, rental or other conditions, withdrawal without notice, and is subject to any special listing conditions imposed by our principals. Cooperating brokers, buyers, tenants and other parties who receive this document should not rely on it, but should use it as a starting point of analysis, and should independently confirm the accuracy of the information contained herein through a due diligence review of the books, records, files and documents that constitute reliable sources of the information described herein. Logos are for identification purposes only and may be trademarks of their respective companies. NAI Capital Commercial, Inc. CAL DRE Lic. #02130474