

Piedmont professional Office Building

Medical / Office
Hickory, North Carolina



NAI Southern
Real Estate

NAI Southern Real Estate
4201 Congress Street, Suite 170
Charlotte, NC 28209
srenc.com / 704-375-1000

Contact:

Dave Allison
Vice President
dallison@srenc.com
M: 704-301-5676

2660 Tate Blvd | Hickory, North Carolina

**Piedmont Professional
Office Building**

www.srenc.com

PROPERTY HIGHLIGHTS

Piedmont Professional Office Building

The Piedmont Professional Building is a premier medical office building in Hickory, North Carolina. The Piedmont Professional Building is well located between Hickory's two major medical centers and was developed in 2004 by and for Piedmont Cardiology Associates, now Frye Cardiology which occupies the entire ground floor. The second floor is a multi-tenant floor with some tenancy and vacancy as well. The common areas and tenant spaces have a bright contemporary atmosphere and the property is one of the few truly Class A Medical Office Buildings currently available in the Hickory sub-market.

5,148 SF to 10,537 SF available on the Second Floor
Call for Rates



Close to Catawba Valley Medical Center and Frye Regional Treatment Center.

Contact:

Dave Allison
Vice President
dallison@srenc.com
M: 704-301-5676



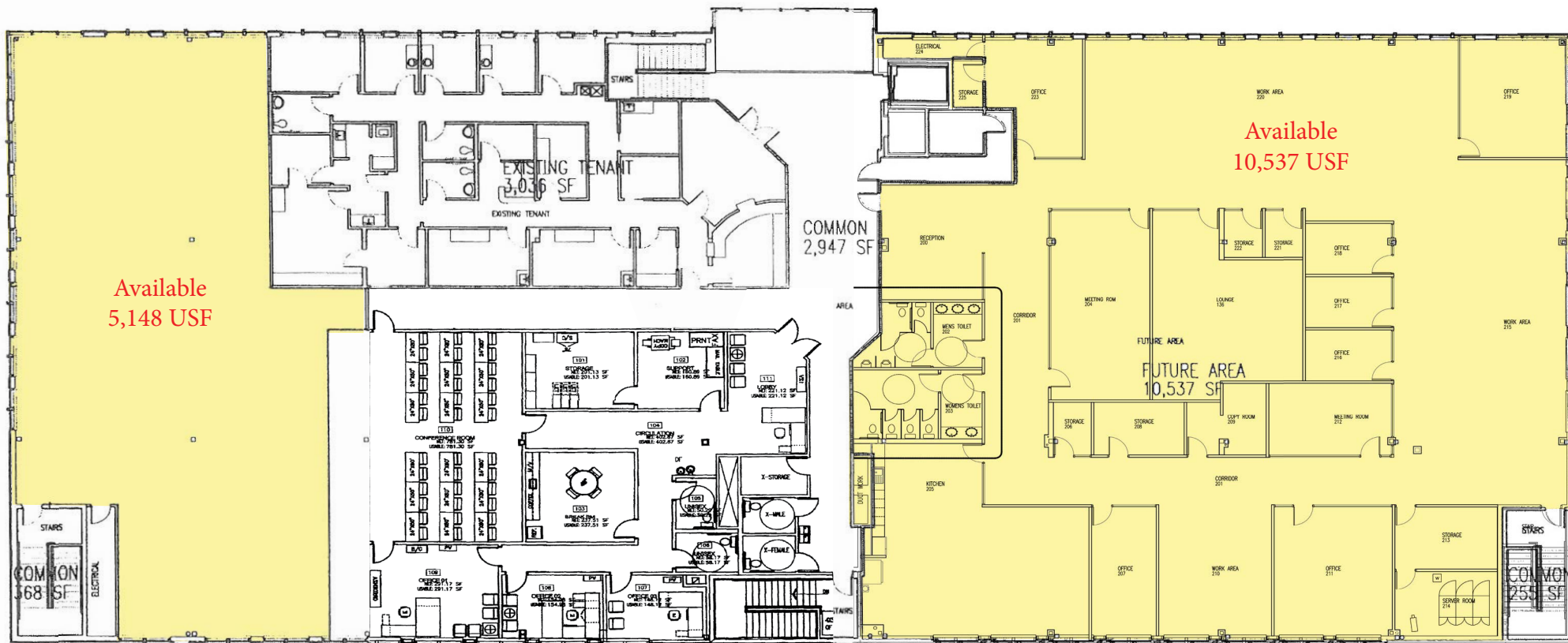
Conveniently located off of Tate Blvd near McDonald Pkwy and Highland Ave, two major Thoroughfares in Hickory, NC. Easy access from I-40.

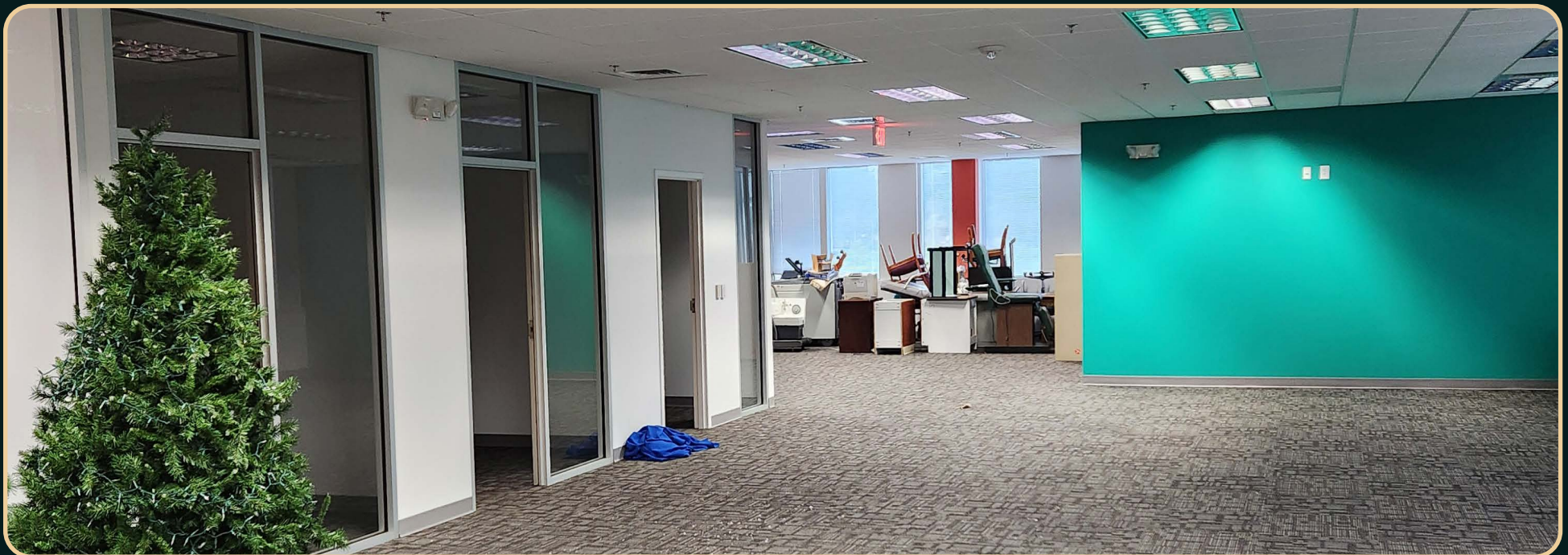


+12,000+ VPD on Tate Blvd SE and 19,000+ VPD on McDonald Pkwy and over 70,000+ VPD on I-40 at the closest exit.

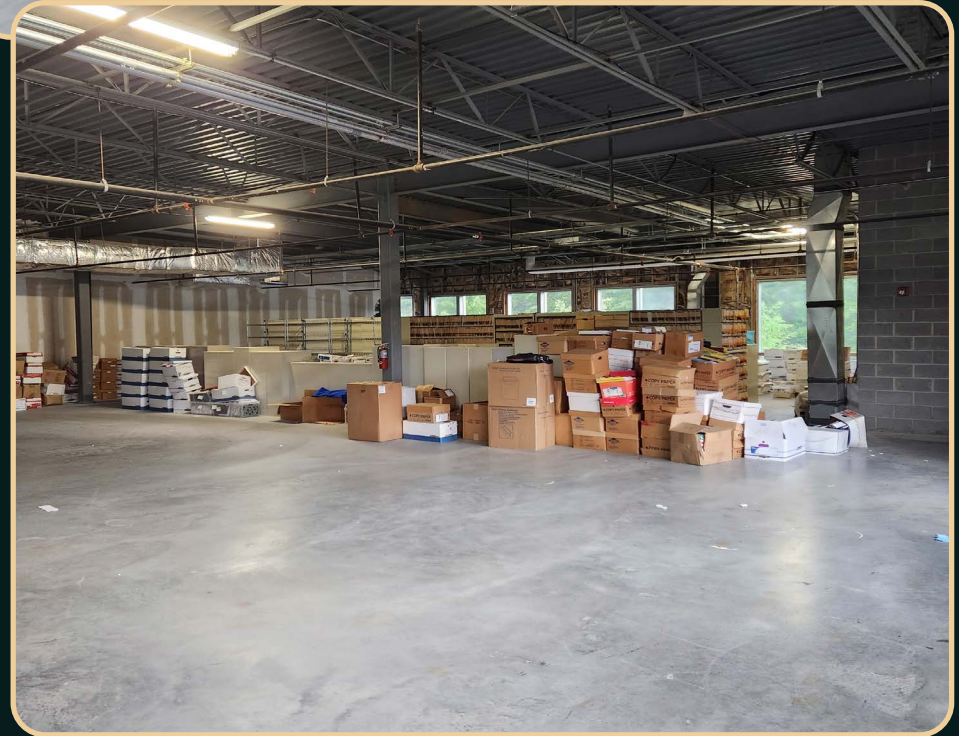


FLOOR PLAN









Piedmont professional Office Building

Medical / Office
Hickory, North Carolina



For More Information, contact:

Dave Allison
Vice President
dallison@srenc.com
M: 704-301-5676



NAI Southern Real Estate
4201 Congress Street, Suite 170
Charlotte, NC 28209
srenc.com / 704-375-1000

Piedmont Professional Office Building

www.srenc.com

Copyright 2024 NAI Southern Real Estate. All rights reserved. The information contained in this communication is strictly confidential. This information has been obtained from sources believed to be reliable but has not been verified. NO WARRANTY OR REPRESENTATION, EXPRESS OR IMPLIED, IS MADE AS TO THE CONDITION OF THE PROPERTY (OR PROPERTIES) REFERENCED HEREIN OR AS TO THE ACCURACY OR COMPLETENESS OF THE INFORMATION CONTAINED HEREIN, AND SAME IS SUBMITTED SUBJECT TO ERRORS, OMISSIONS, CHANGE OF PRICE, RENTAL OR OTHER CONDITIONS, WITHDRAWAL WITHOUT NOTICE, AND TO ANY SPECIAL LISTING CONDITIONS IMPOSED BY THE PROPERTY OWNER(S) OR BY REPRESENTATIVE AGENCIES; SOUTHERN REAL ESTATE COMPANY OF CHARLOTTE, INC. AND NAI GLOBAL. ANY PROJECTIONS, OPINIONS OR ESTIMATES ARE SUBJECT TO UNCERTAINTY AND DO NOT SIGNIFY CURRENT OR FUTURE PROPERTY PERFORMANCE.