

CITYCE

NTRE



SIX

By The Numbers



12K SF
NEW RETAIL SPACE



25K SF
URBAN PLAZA



308K SF
OFFICE SPACE
70% PRE-LEASED



133K+
DAYTIME POPULATION
IN A 3-MILE



9 LEVEL
ATTACHED STRUCTURED
PARKING PLUS 3,300
DISTRICT PARKING SPACES



20'
CEILING HEIGHTS



VALET ACCESSIBILITY



SHARED GREASE TRAP
IN PLACE



Strategic Location

\$186K

AVERAGE HOUSEHOLD INCOME WITHIN 1 MILE

\$752K

MEDIAN HOME VALUE WITHIN 1 MILE

1.5M SF

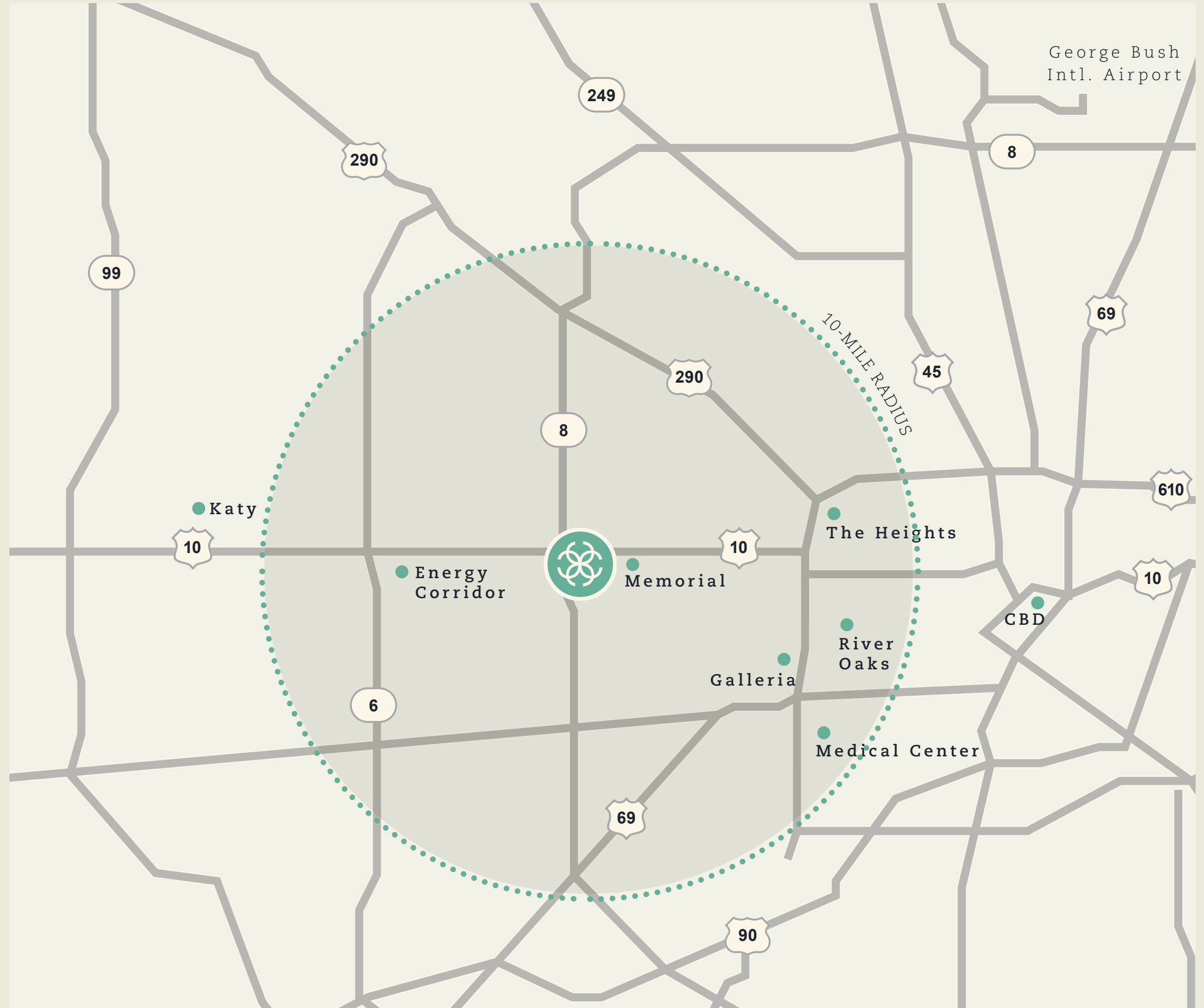
OFFICE 100% LEASED

1.6M+

PEOPLE WITHIN 20 MINUTES

5.1M+

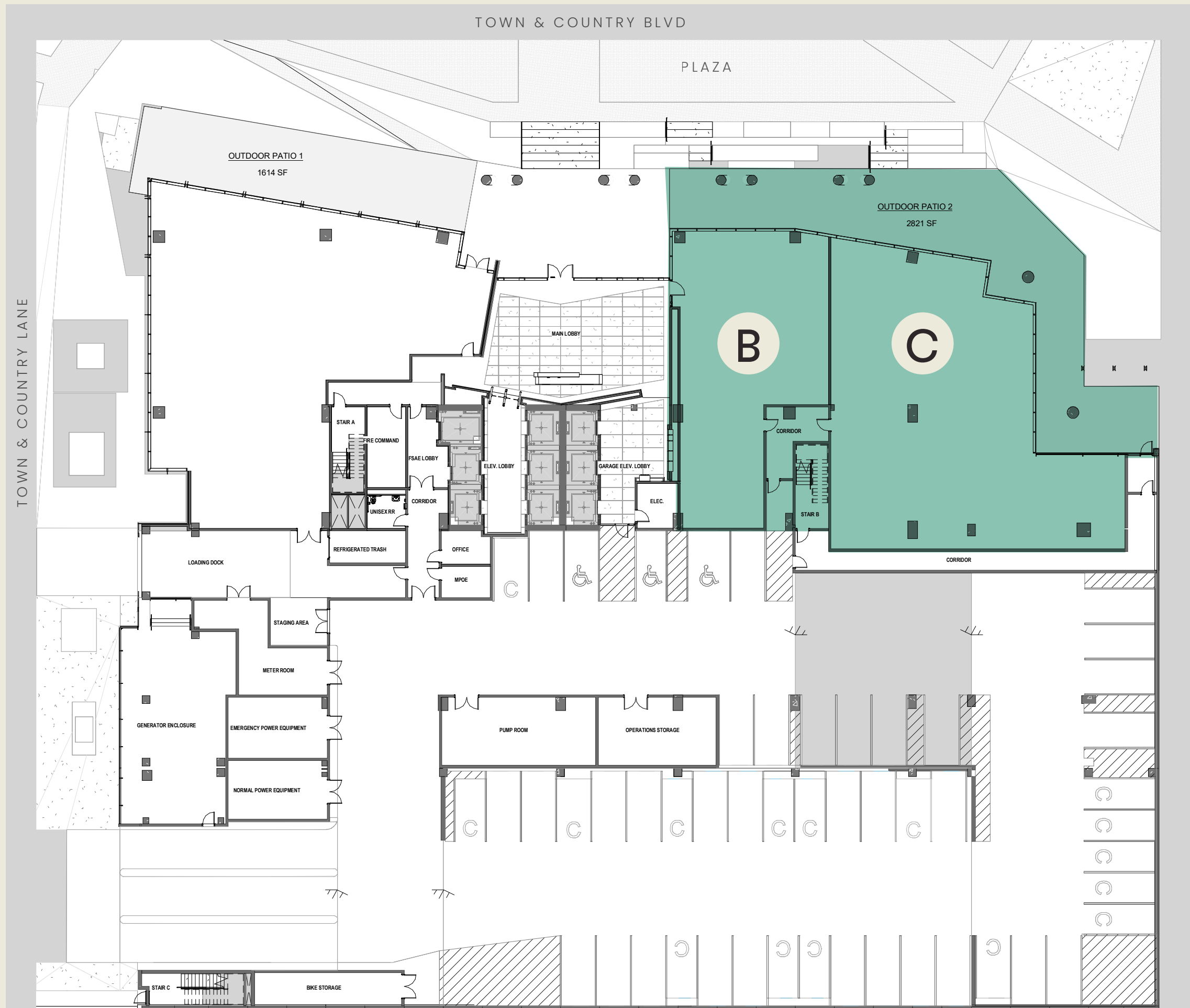
VISITORS ANNUALLY



Level 1 Floorplan

Retail Space — B
2,424 SF + patio

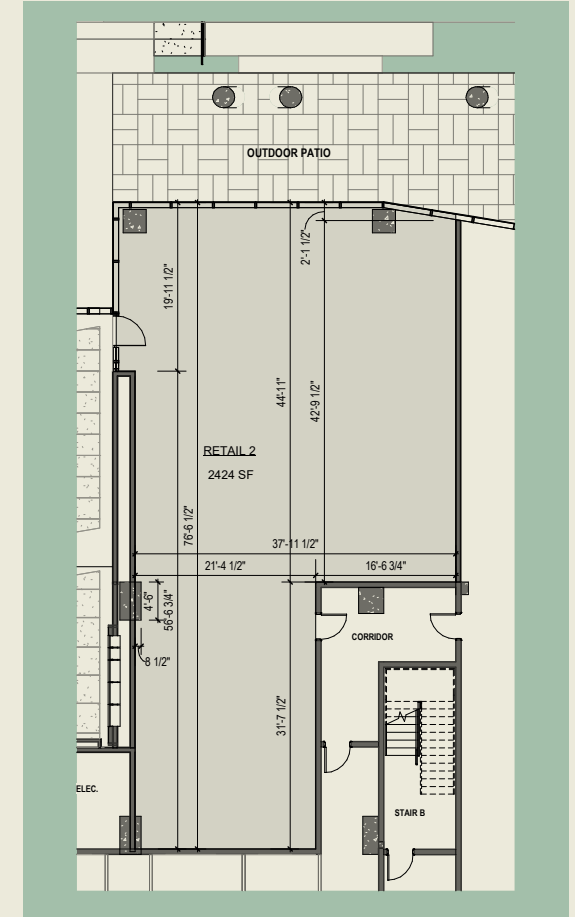
Retail Space — C
4,422 SF + 1,500 SF patio



Retail Space — B

2,424 SF + patio

COFFEE/CAFE

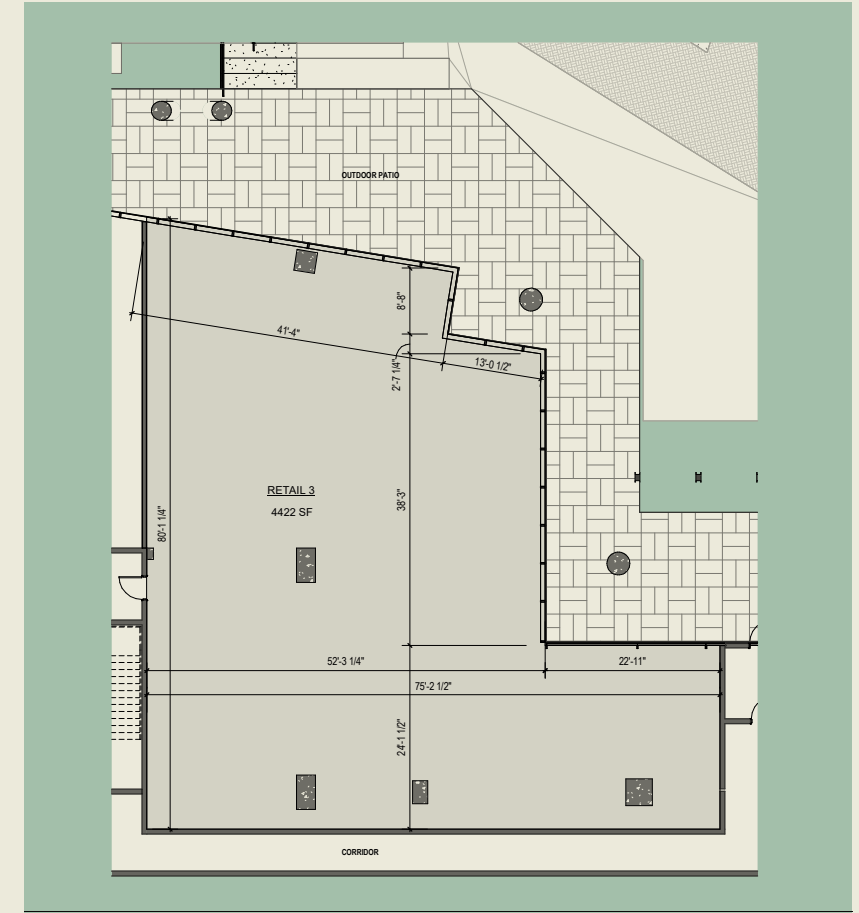


CITYCENTRE SIX



Retail Space — C 4,422 SF + 1,500 SF patio

FITNESS/CAFE



CITYCENTRE SIX





CITYCENTRE

CITYCENTRE is known within Houston and beyond for bringing together Class-A office, high-end retailers and restaurants, luxury living, and robust event spaces.





CITYCENTRE
SIX

COMING

Q4 2025

NOW

PRE-LEASING

Lacee Jacobs

832.504.9289

LJACOBS@PKY.COM

Laura Harness

713.463.4642

LHARNESS@PKY.COM

LEASED + MANAGED BY

PARKWAY

DEVELOPED BY

MIDWAY