

**GOBLE
PROPERTIES**



2365-C PARAGON DR. SAN JOSE, CA



R&D/FLEX For Lease
6,700 SF

GOBLEPROPERTIES.COM

Contact Us

408-452-1754

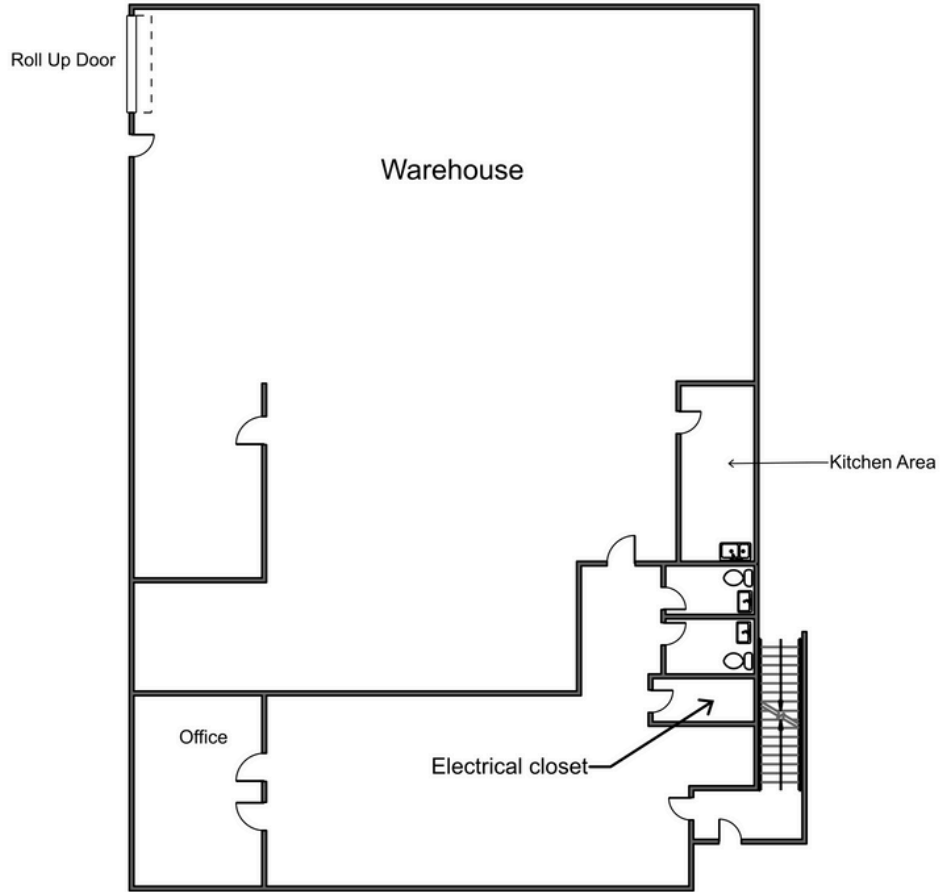
contact@gobleproperties.com

**2365-C Paragon Dr.,
San Jose, California**

**2365-C Creekside Park
6,700 SF
1st Floor**

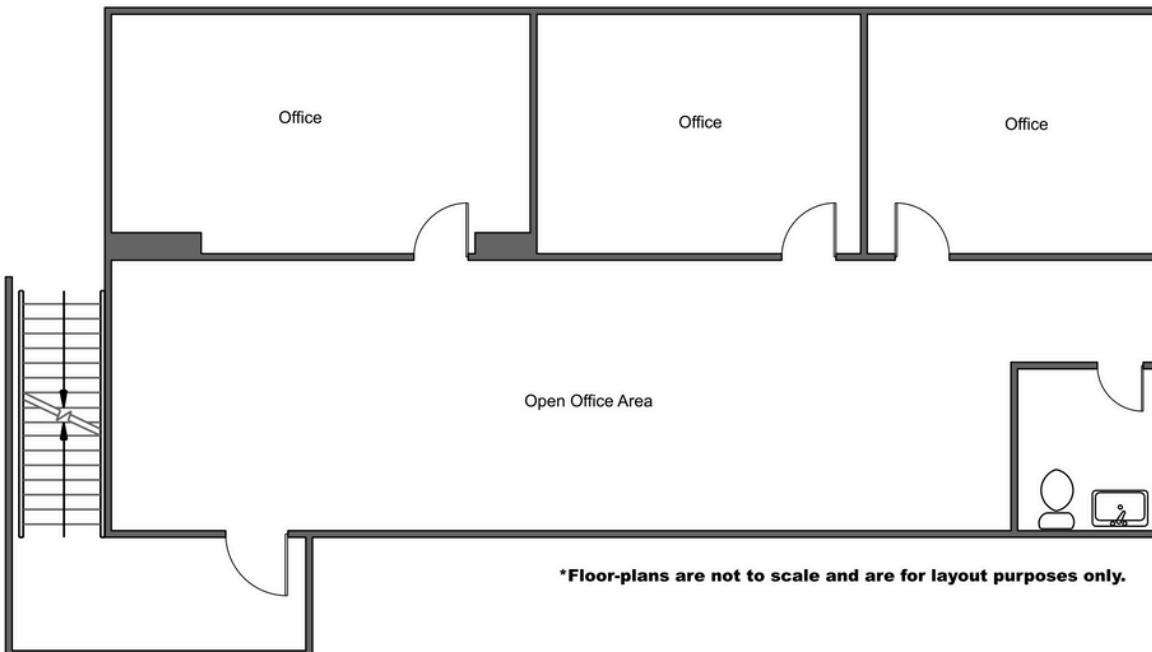
Unit Highlights

- 6,700 sq. ft.
- 2 floors
- Grade Level Roll Up Door
- 3 Restrooms
- Lobby + 4 Private Offices
- 2 HVAC units
- Kitchenette



***Floor-plans are not to scale and are for layout purposes only.**

**2365-C Creekside Park
6,700 SF
2nd Floor**



***Floor-plans are not to scale and are for layout purposes only.**



Contact Us

408-452-1754

contact@gobleproperties.com