

# FOR LEASE - OFFICE BUILDING

2363 James Street, Syracuse, NY 13202



**21,965 SF AVAILABLE | 2-STORIES | 45 PARKING SPACES**

**BELLCORNERSTONE**  
*Commercial Real Estate*

## FOR MORE INFORMATION:

Mark Bethmann  
BellCornerstone  
315.427.7676

[mbethmann@bellcornerstone.com](mailto:mbethmann@bellcornerstone.com)

Dan Lynch  
BellCornerstone  
315.498.1600

[dlynch@bellcornerstone.com](mailto:dlynch@bellcornerstone.com)



[www.BellCornerstone.com](http://www.BellCornerstone.com)



# PROPERTY OVERVIEW

2363 James Street, Syracuse, NY 13202



## PROPERTY FEATURES

<b>Property Type:</b>	Office
<b>Building Class:</b>	A
<b>Year Built:</b>	1985
<b>Building SF:</b>	21,965 SF
<b>Floors:</b>	2
<b>Parking:</b>	45 Surface Parking Spaces





# PICTURES





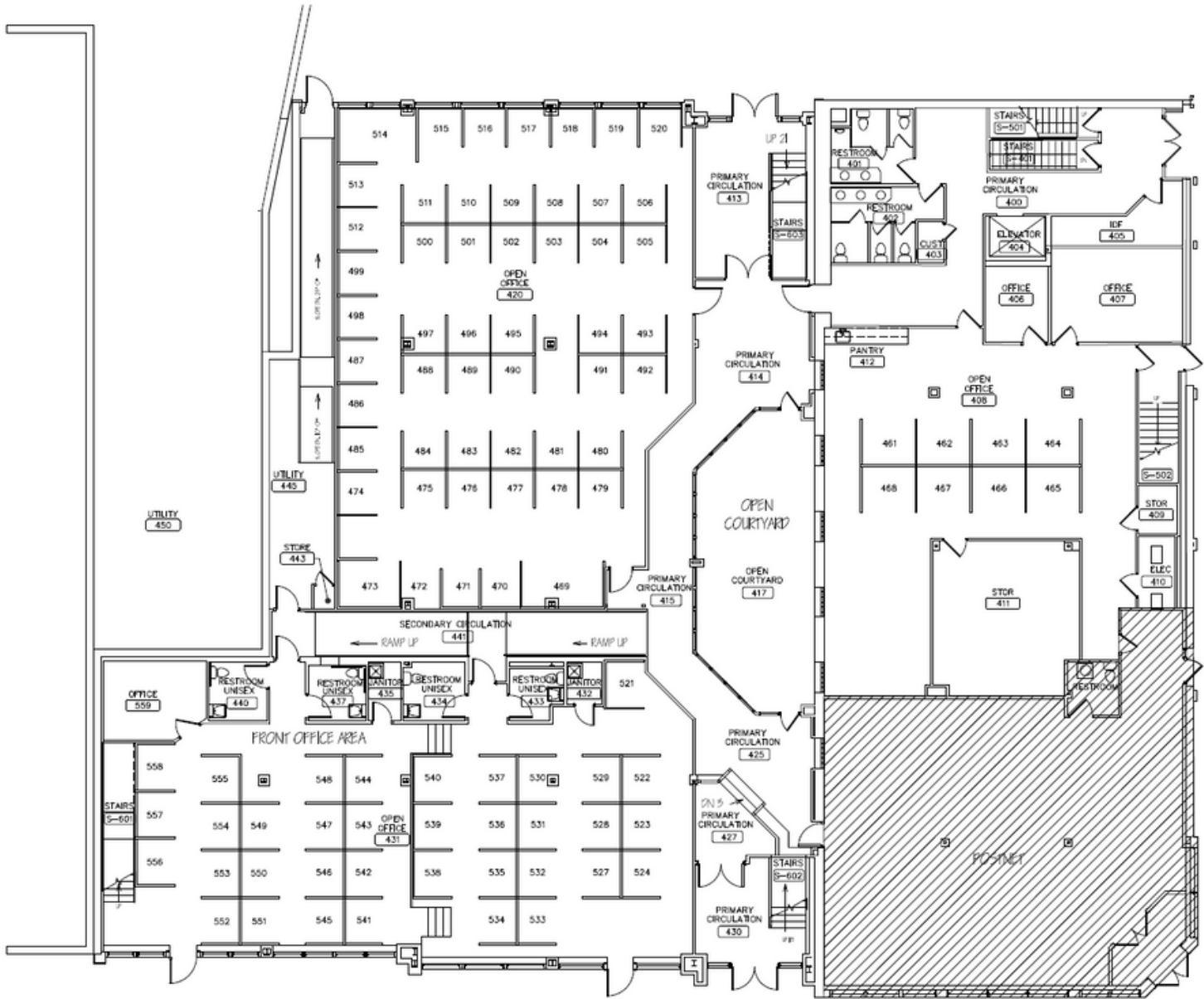
# PICTURES





# FLOORPLANS

## 1st Floor: 9,349 SF

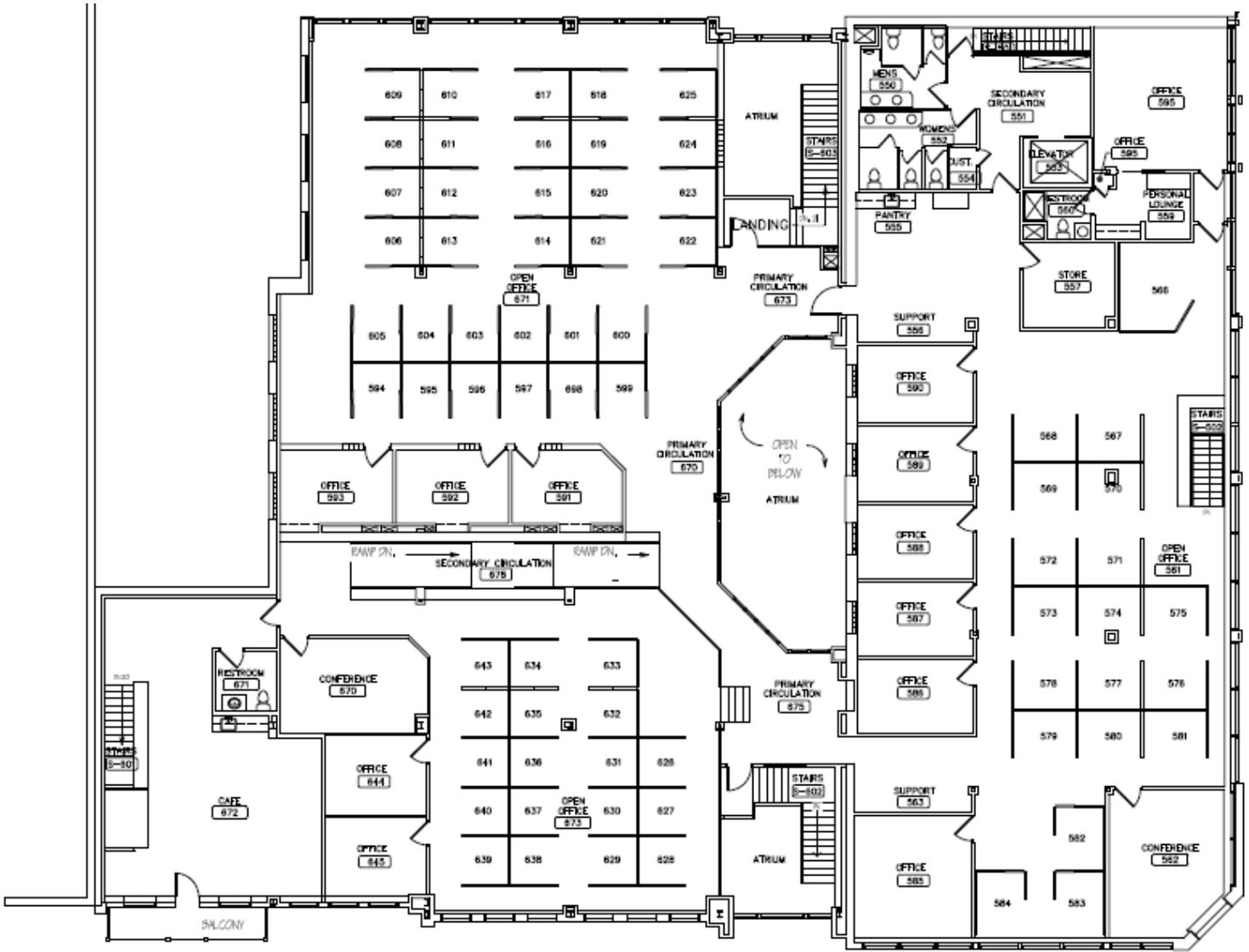


North Ave

James Street

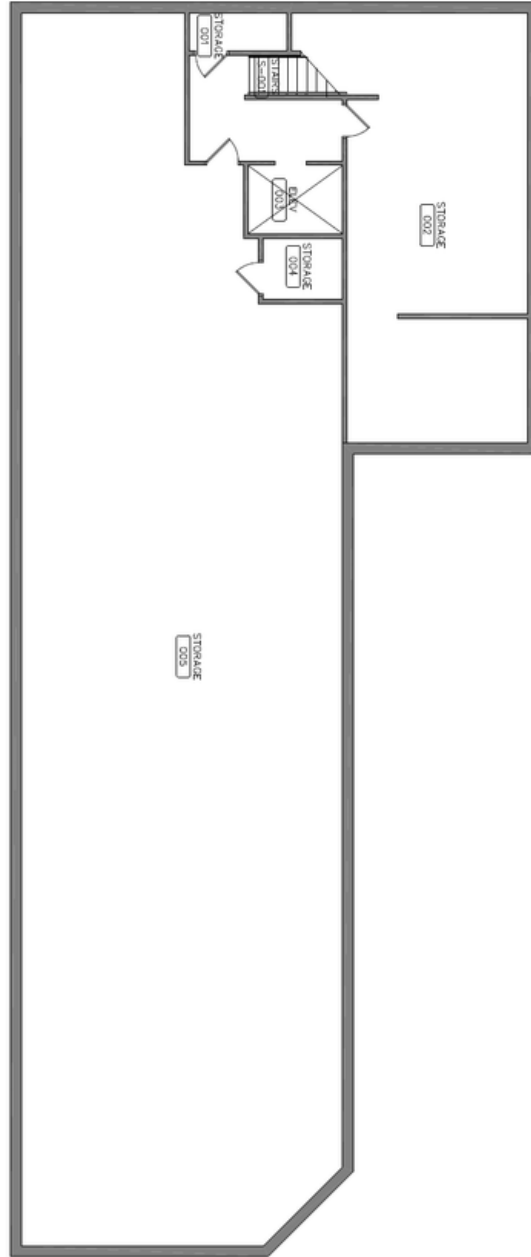
# FLOORPLANS

## 2nd Floor: 12,616 SF



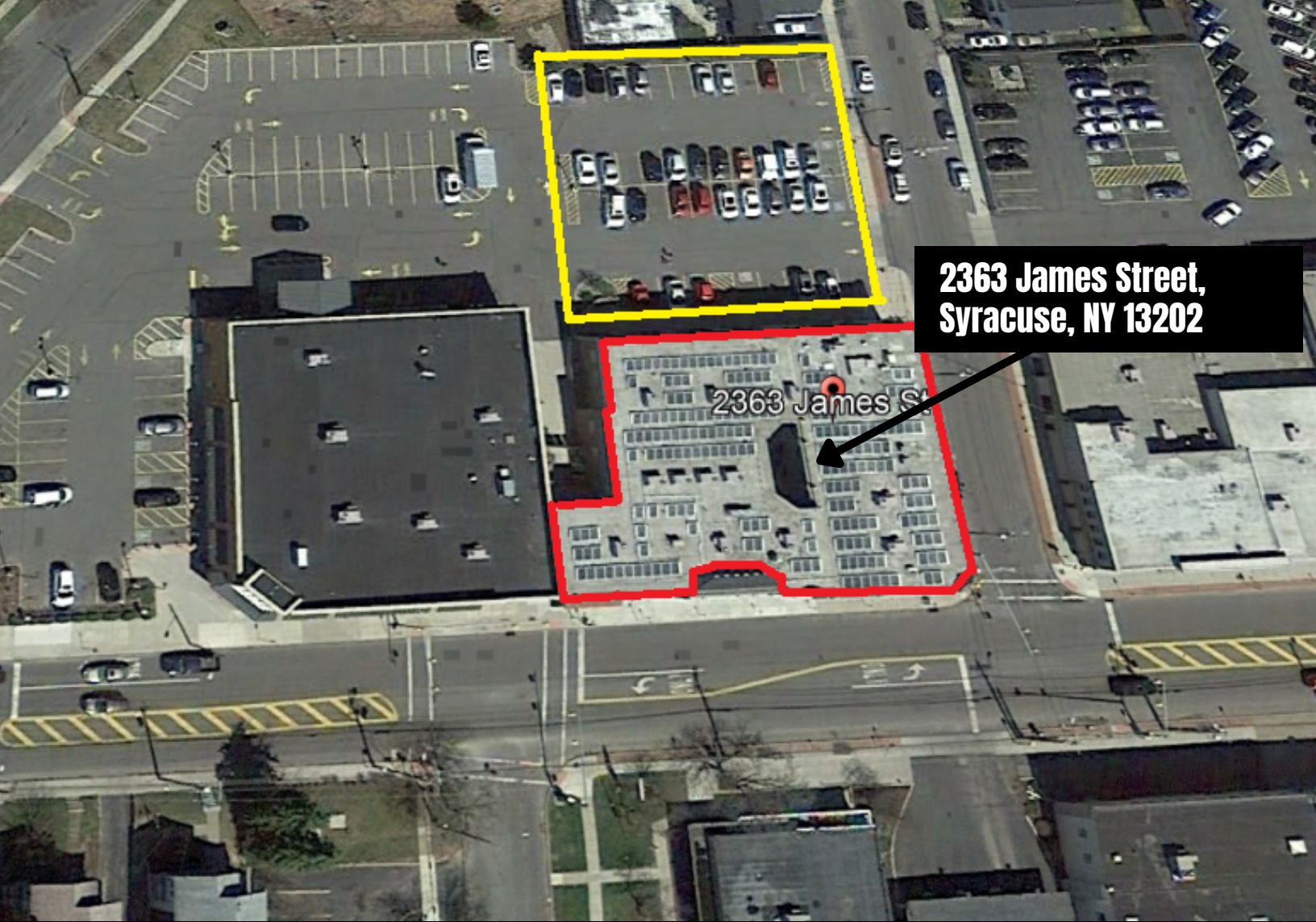
North Ave

James Street



**North Ave**

**James Street**



**2363 James Street,  
Syracuse, NY 13202**

# **BELLCORNERSTONE**

*Commercial Real Estate*

## **FOR MORE INFORMATION:**

Mark Bethmann

BellCornerstone

315.427.7676

[mbethmann@bellcornerstone.com](mailto:mbethmann@bellcornerstone.com)

Dan Lynch

BellCornerstone

315.498.1600

[dlynch@bellcornerstone.com](mailto:dlynch@bellcornerstone.com)

DISCLAIMER: The information contained in this flyer has been prepared to provide summary information and to establish a preliminary level of interest in the subject property. The information contained herein is for informational purposes only and does not constitute an offer to sell, lease, or sublease, nor is it a solicitation for same.