



## PROPERTY DETAILS

**Available:** ±20,847 SF Industrial Warehouse/  
Manufacturing Building on  
±40,847 SF of Land

**Rate:** \$0.85 / SF Gross for the first 6 months,  
\$1.70 thereafter

**Term:** 3-5 years

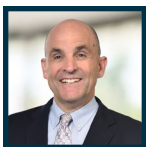
**Zoning:** I-C

**APN#:** 8550-005-061

- High Image/  
Freeway Visibility
- Large Fenced /  
Paved Yard
- Two (2) Dock High
- 1240 Amps
- Three (3) Ground  
Level Doors
- 28' Minimum  
Clearance Height
- 42 Parking Spaces

**TAKE A TOUR**

LOCAL EXPERTISE. INTERNATIONAL REACH. WORLD CLASS.

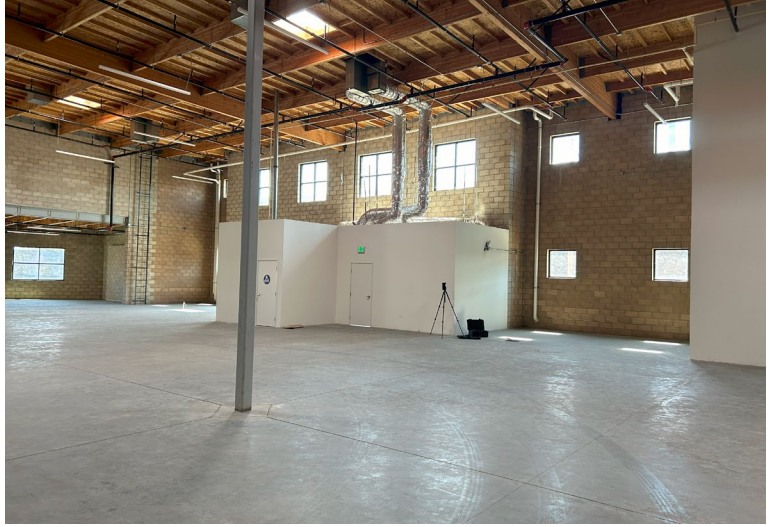
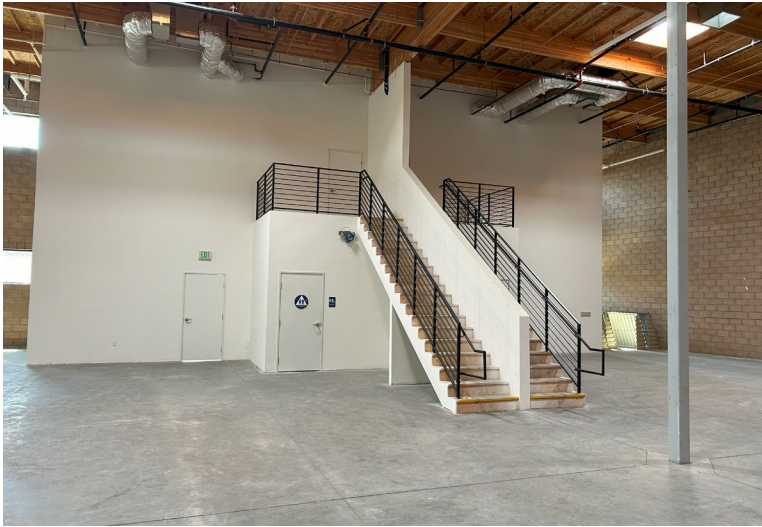


**Ron Mgrublian**  
Principal | DRE# 01902882  
P: +1(562)354-2537  
E: rmgrublian@leelalb.com

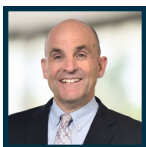
CONNECT WITH US ON OUR SOCIALS!

www.lee-associates.com @leeassociateslalb  
 @leeassociateslalb @LeeAssociatesLA

Copyright © Lee & Associates. All rights reserved. No part of this work may be reproduced or distributed without written permission of the copyright owner. The information contained in this report was gathered by Lee & Associates from sources believed to be reliable. Lee & Associates, however, makes no representation concerning the accuracy or completeness of such information and expressly disclaims any responsibility for any inaccuracy contained herein.



LOCAL EXPERTISE. INTERNATIONAL REACH. WORLD CLASS.



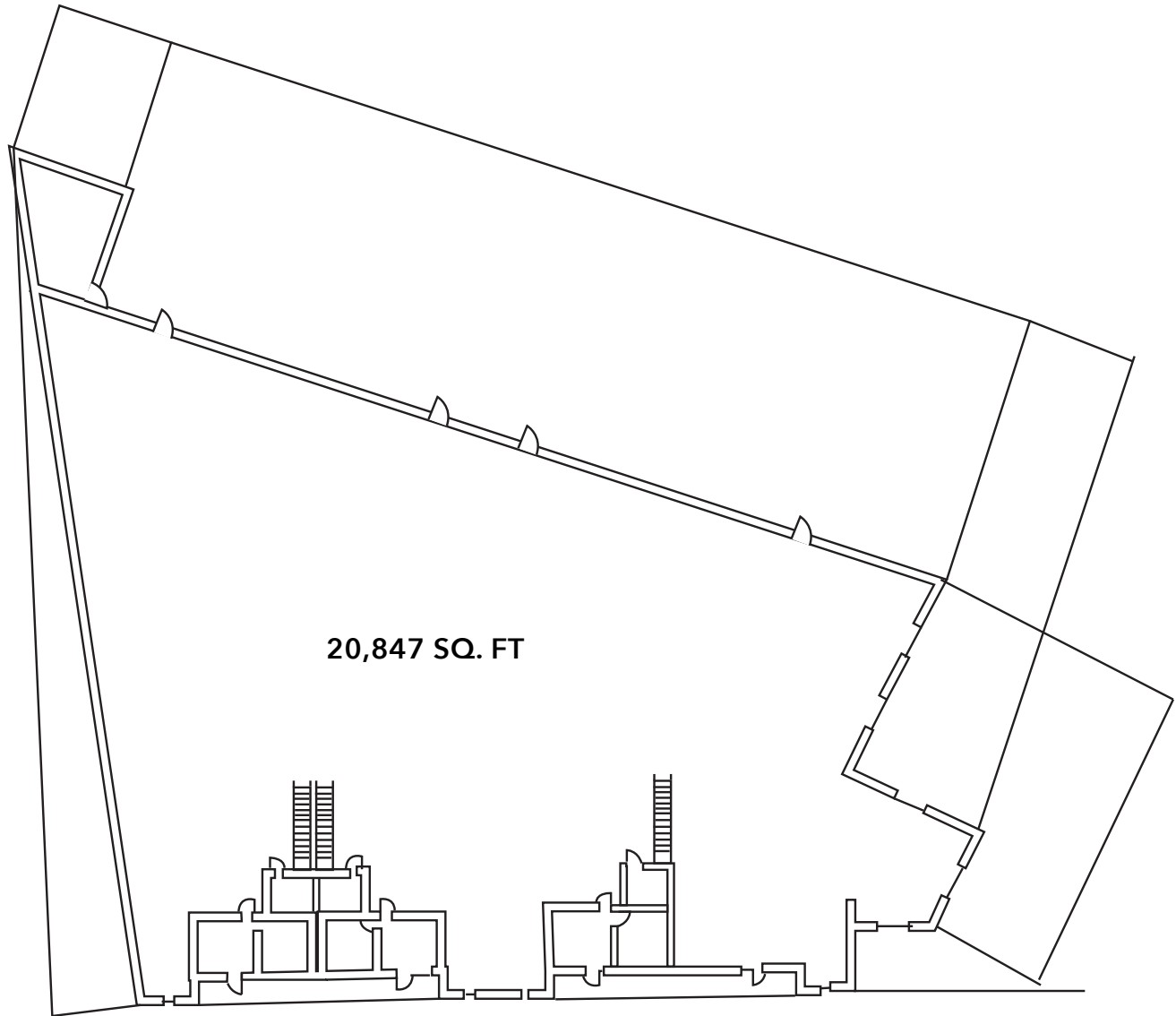
**Ron Mgrublian**  
Principal | DRE# 01902882  
P: +1(562)354-2537  
E: rmgrublian@leelalb.com

CONNECT WITH US ON OUR SOCIALS!

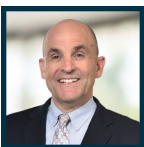
 [www.lee-associates.com](http://www.lee-associates.com)  @leeassociateslalb  
 @leeassociateslalb  @LeeAssociatesLA

Copyright © Lee & Associates. All rights reserved. No part of this work may be reproduced or distributed without written permission of the copyright owner. The information contained in this report was gathered by Lee & Associates from sources believed to be reliable. Lee & Associates, however, makes no representation concerning the accuracy or completeness of such information and expressly disclaims any responsibility for any inaccuracy contained herein.

## FLOOR PLANS: (NOT TO SCALE)



LOCAL EXPERTISE. INTERNATIONAL REACH. WORLD CLASS.



**Ron Mgrublian**  
Principal | DRE# 01902882  
P: +1(562)354-2537  
E: rmgrublian@leelalb.com

CONNECT WITH US ON OUR SOCIALS!

 [www.lee-associates.com](http://www.lee-associates.com)  @leeassociateslalb  
 @leeassociateslalb  @LeeAssociatesLA

Copyright © Lee & Associates. All rights reserved. No part of this work may be reproduced or distributed without written permission of the copyright owner. The information contained in this report was gathered by Lee & Associates from sources believed to be reliable. Lee & Associates, however, makes no representation concerning the accuracy or completeness of such information and expressly disclaims any responsibility for any inaccuracy contained herein.