

Chickasaw

Marine Terminal I

750-A Viaduct Rd. | Chickasaw, AL 36611

**FOR
LEASE**





Contact agent for available areas



Vessel Access

2,200 LF of bulkhead for vessel access.
3 miles upriver from Port of Mobile cargo terminals.



Manufacturing

±110,969 total SF covered space,
±10 acres of laydown yard and dock improvements available.



Site and Rail Improvement

Rail service with expansion capabilities via Norfolk Southern. Daily switching service.



Maritime Industrial Facility

Multi-purpose terminal matching vessel, rail, truck, and manufacturing.



PROPERTY OVERVIEW

Waterfront Industrial Development - Chickasaw Marine Terminal I

Located in Mobile, Alabama, Chickasaw Marine Terminal I is a premier heavy industrial site offering seamless multimodal access via vessel, rail, and truck. Strategically positioned near the Mobile River, Port of Mobile cargo terminals, and the Gulf of Mexico, the site ensures efficient connectivity for domestic and international logistics. Currently available is 110,696 SF of warehouse space and +/- 10 acres of yard area and 2 docks totaling 2,200 LF. Current neighboring tenants include a steel plate distributor and a metal fabrication and assembly facility, contributing to a robust industrial ecosystem. Rail infrastructure is in place with Norfolk Southern service, and future expansion opportunities are available to enhance rail access. The terminal is equipped with 480-volt, 3-phase power and industrial utilities, supporting a wide range of operations.



AERIAL

- Maximum vessel specs: 450' length, 70' beam, 22' draft
- Vessel/rail/truck access
- 2,200 LF of berth space for vessels
- 110,969 SF warehouse space
- 10 AC of yard area
- 1,200 amps shore power
- Up to 15,000 SF of professional office space available offsite
- Neighboring tenants within the facility are a steel plate distributor and metal fabrication & assemble operation

DRIVE TIMES


Interstate 65 Onramp

 5.6 mi  14 min

Port of Mobile General Cargo Docks

 6.5 mi  16 min

Austal Shipbuilding

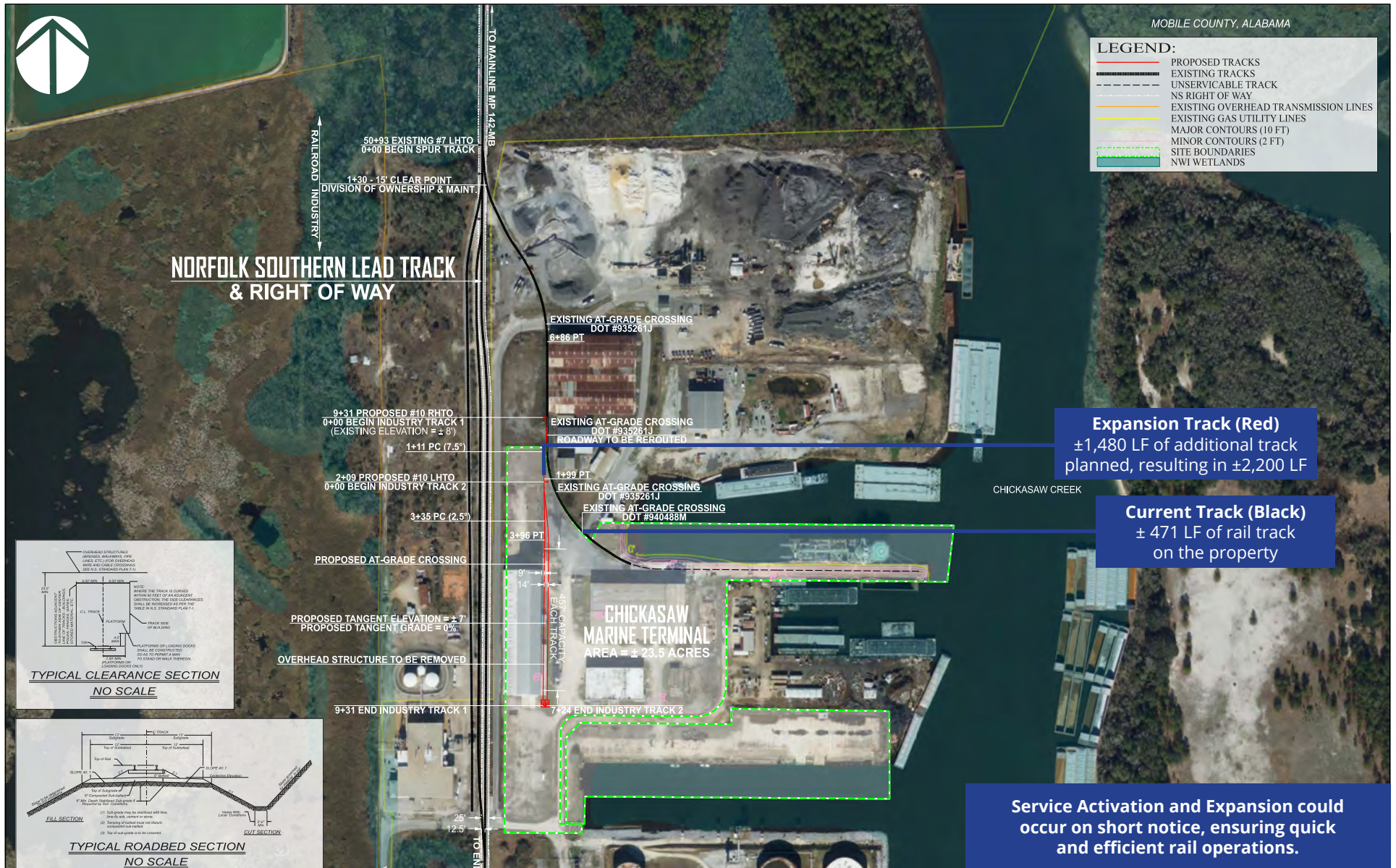
 8.5 mi  16 min

APM Container Terminal - Mobile

 9 mi  21 min



NORFOLK SOUTHERN RAIL ACCESS





Port of Mobile

90

90

43

43

65

43

Mobile River

Chickasaw Creek

Chickasaw Creek



Chickasaw Marine Terminal I



Mobile, AL



Jacob Crist, CRE, CCIM

Associate Vice President

+1 504 906 4091

jacob.crist@colliers.com

650 Poydras St, Suite 1400
New Orleans, LA 70130
+1 504 910 6622

This document/email has been prepared by Colliers for advertising and general information only. Colliers makes no guarantees, representations or warranties of any kind, expressed or implied, regarding the information including, but not limited to, warranties of content, accuracy and reliability. Any interested party should undertake their own inquiries as to the accuracy of the information. Colliers excludes unequivocally all inferred or implied terms, conditions and warranties arising out of this document and excludes all liability for loss and damages arising there from. This publication is the copyrighted property of Colliers and /or its licensor(s). © 2025. All rights reserved. This communication is not intended to cause or induce breach of an existing listing agreement. Colliers Louisiana, LLC

colliers.com/neworleans

