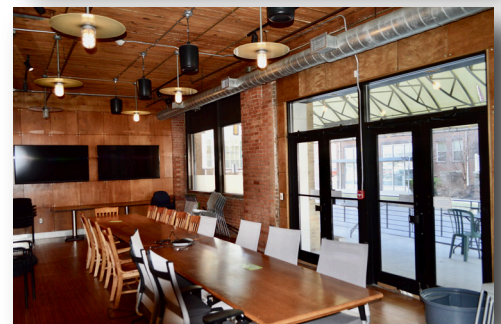
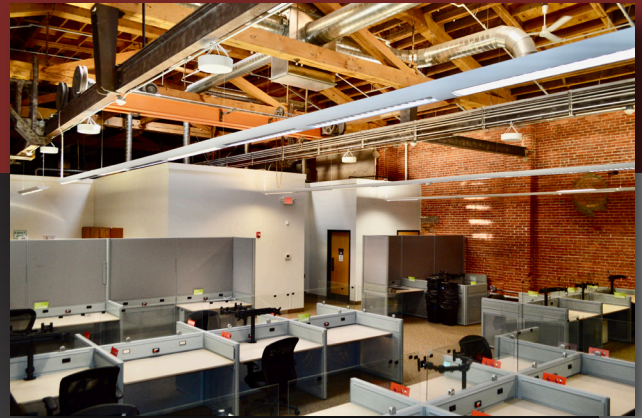


For LEASE

Office Space for Lease

300 State Street Rochester, NY 14614



- Former telecommunications company space available with 23,707 SF on the first floor. Can be demised to three (3) separate Units of: 12,341 SF, 6,058 SF, and 5,308 SF.
- Located across the street from Frontier Field and Eastman Kodak's World Headquarters.
- Built in the late 1800's for the Rochester Button Factory, this property has been completely renovated. The common areas including; lobby, elevator, hallways, front and rear entrances were all upgraded.
- The available spaces have exposed brick and wood beam ceilings throughout. High end interior finishes with modern features and amenities.
- Each space has office furniture available, dedicated server rooms for each space and each is data ready. The building has multiple fiber providers with access.
- Parking is available in both an adjacent lot and the High Falls parking garage.
- Located in the heart of High Falls, with the new High Falls State Park project forthcoming.
- Three (3) entrances into the building on State Street, Mill Street and Platt Street.

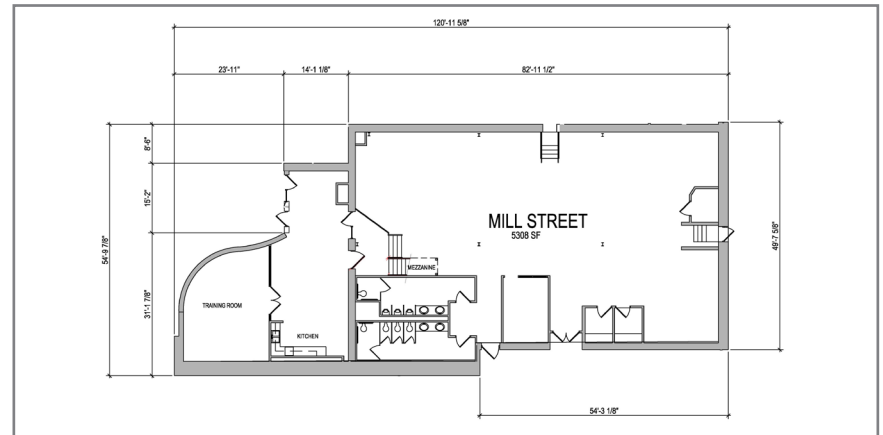
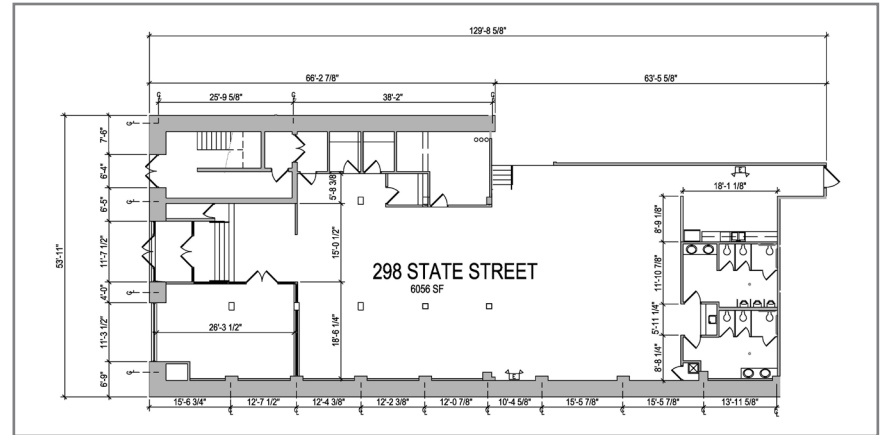
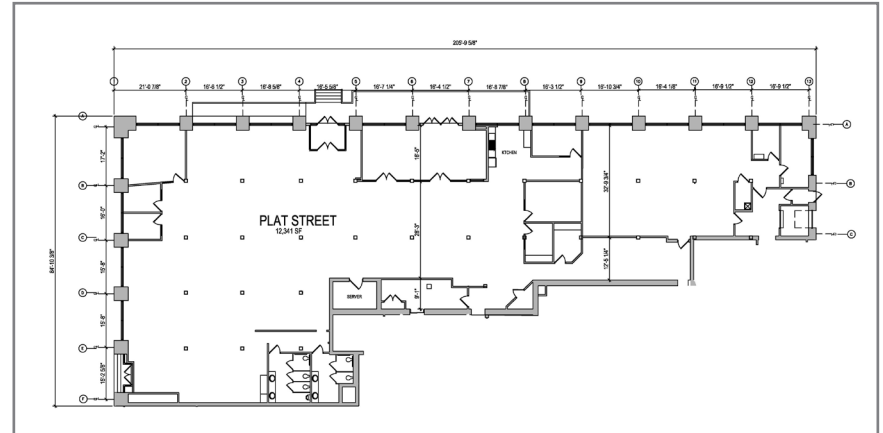
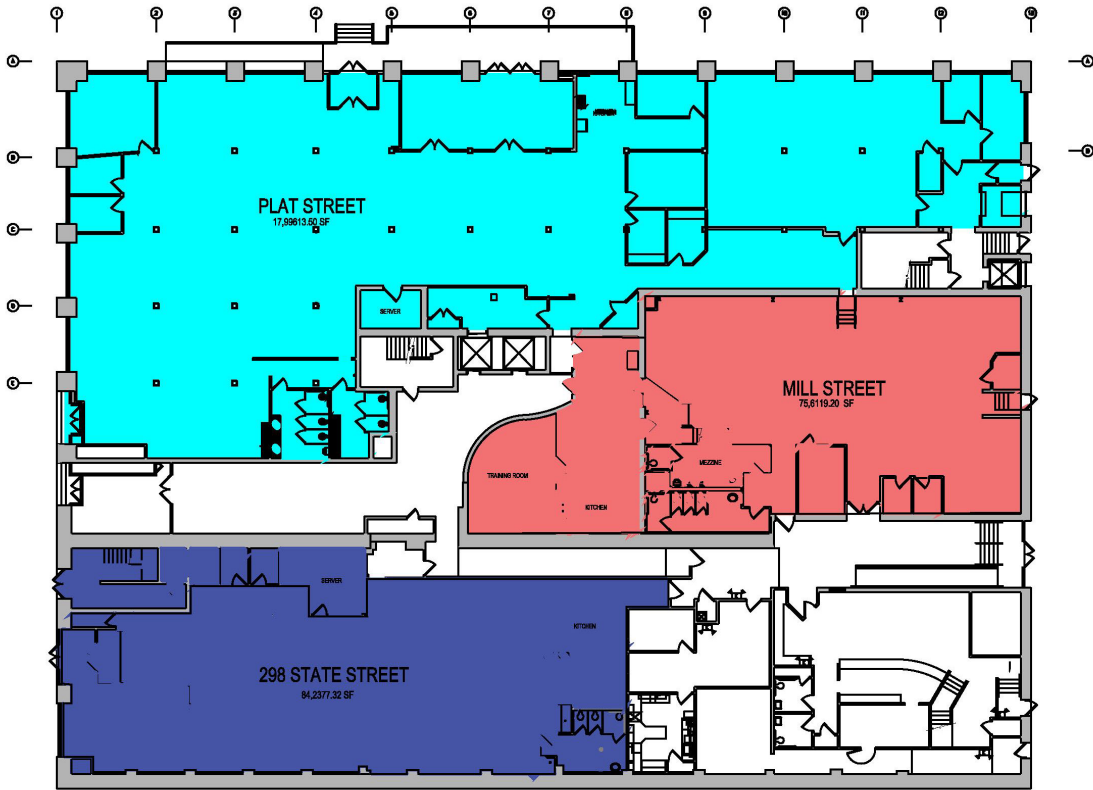


Michael A. Smith - Michael@LLDEnterprises.com
Director of Leasing / Licensed Real Estate Salesperson
585-244-3575 ext. 310

415 Park Avenue - Rochester, NY 14607

WWW.LLDENTERPRISES.COM

Floor Plans



300 State Street Rochester, NY 14614

Former telecommunications company space Available with 23,707 SF on the first floor. Can Be demised to three (3) separate Units of: 12,341 SF, 6,058 SF, and 5,308 SF



415 Park Avenue □ Rochester, NY 14607
585.244.3575 □ www.LLDEnterprises.com

For LEASE

WWW.LLDENTERPRISES.COM