

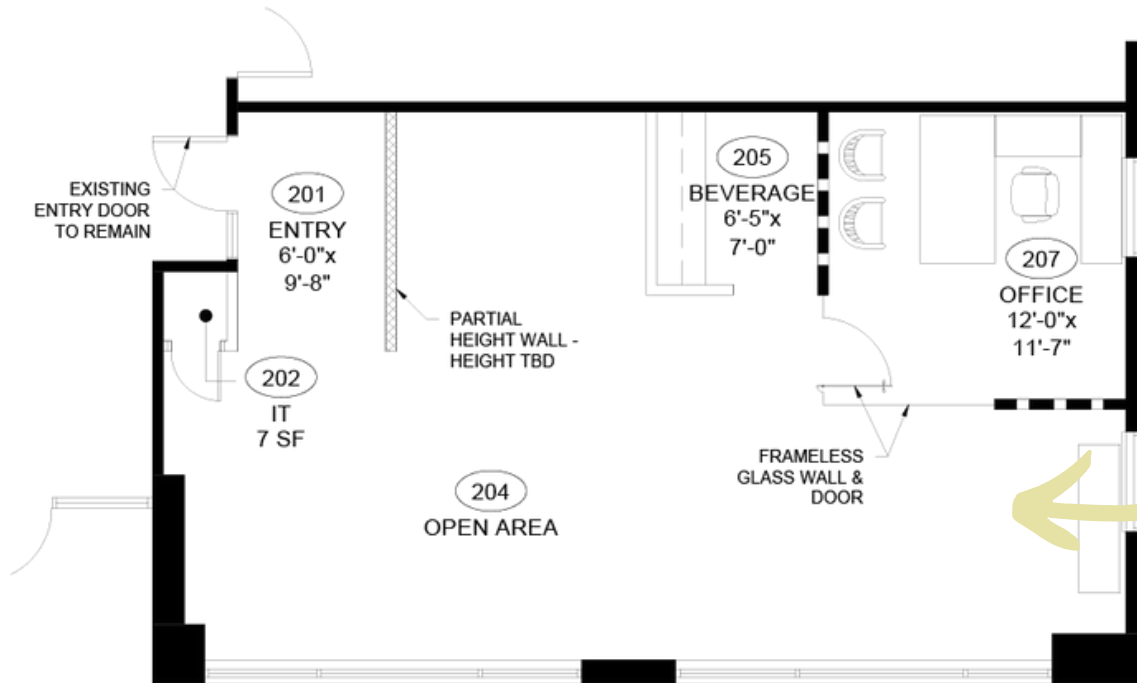


1401
CENTRAL
AVE

1,052 RSF
AVAILABLE
FOR SUBLEASE



✓ SUITE 200-H



**BRAND NEW
RENOVATIONS!**



PROPERTY INFO



**1,052 RSF OFFICE SPACE
AVAILABLE FOR SUBLEASE**



**5 YEAR SUBLEASE
(EXPIRES 8/9/2029)**



**40+ BARS & RESTAURANTS
WITHIN 0.5 MI**



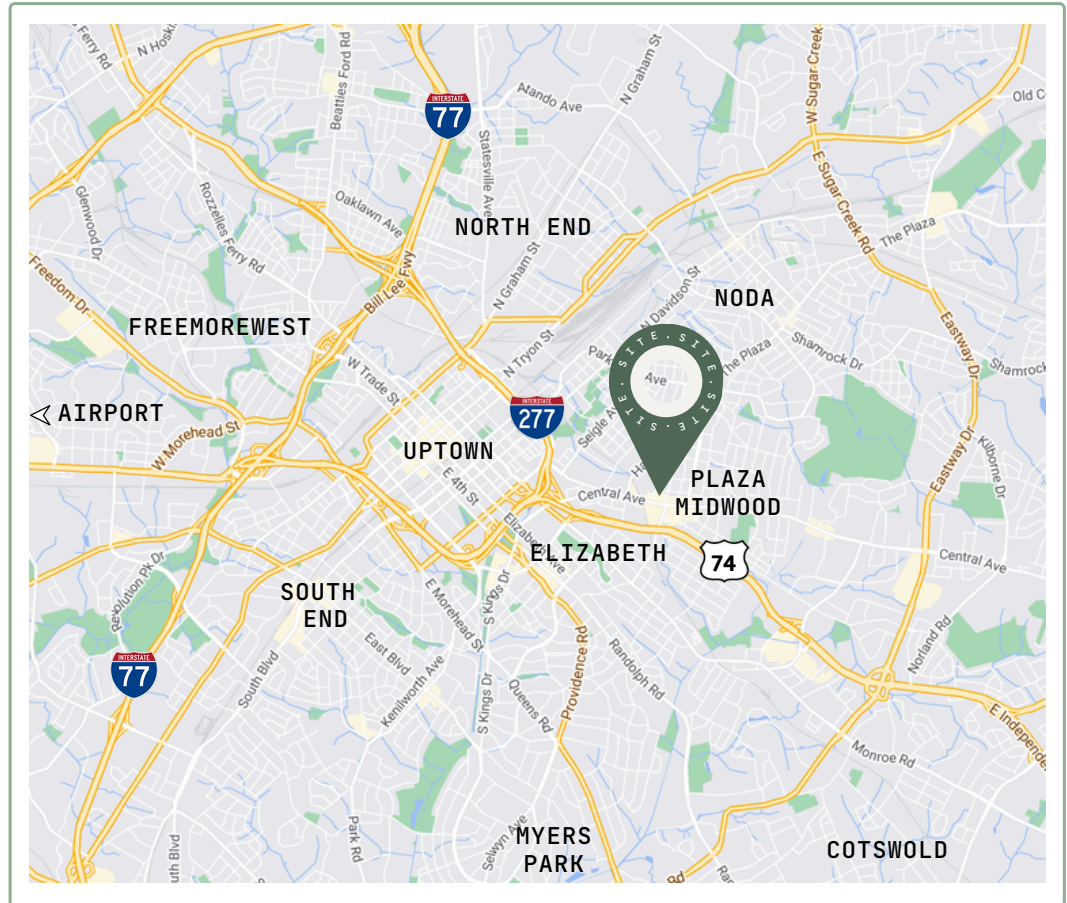
**2.0/1,000
PARKING**



**EASY ACCESS
FROM I-74 & I-277**



**0.2 MI
FROM LYNX GOLD LINE**



ORIENTATION MAP 



PLAZA MIDWOOD



1401
CENTRAL
AVE

GET IN TOUCH 

Stephen Woodard

(704) 905-4309

stephen@thriftcres.com

Alex Mann

(703) 623-7002

alex@thriftcres.com