



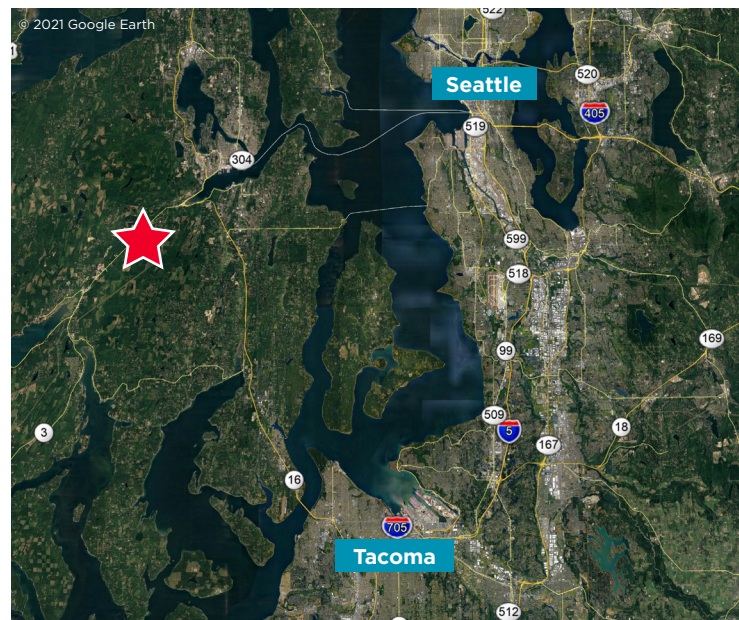
Industrial Buildings for Sale or Lease

Highlights

- 15 Industrial Lots from 1.26 AC to 4.07 AC; Lots May be Combined up to 38.24 AC
- Puget Sound Industrial Center (PSIC) Sub-Area, GI (General Industrial) Zone Allows for Most Industrial Uses
- Buildings to Suit, for Sale or Lease, from 10,000 SF with Yard up to ±450,000 SF

Uses

- Heavy and light manufacturing, assembly, aerospace, warehousing and distribution, food processing, outdoor storage and other uses allowed



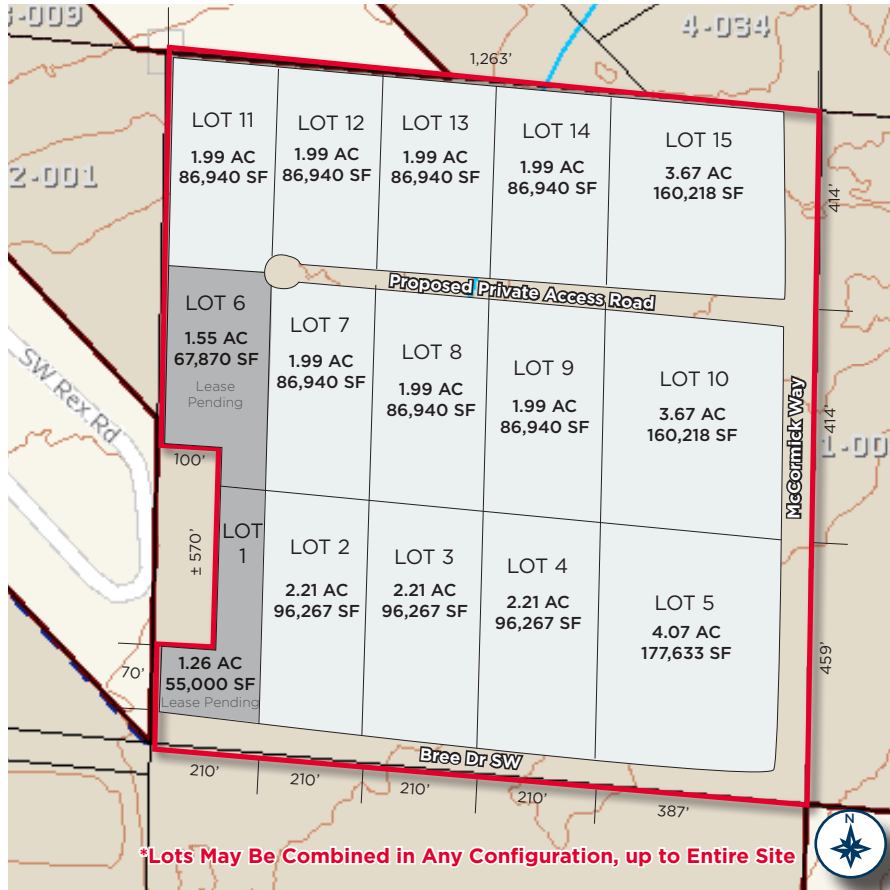
Greg Millerd, MBA
Senior Director
+1 206 521 0237
greg.millerd@cushwake.com

Nic Alfieri
Associate
+1 206 682 0666
nicolas.alfieri@cushwake.com



601 Union Street
Suite 1100
Seattle, WA 98101
Main +1 206 682 0666
Fax +1 206 521 0298
cushmanwakefield.com

Site Plan



Industrial Buildings to Suit with Storage Yard as Required

BUILDINGS UP TO 25,000 SF

- 24' Clear Height Insulated Metal Building
- Dock and/or Grade Loaded
- 1,000 SF Industrial Office with Restroom
- Sprinklers per Code
- LED Warehouse Lighting
- Paved Yard, On-Site Storm Detention

BUILDINGS OVER 25,000 SF

- 24' Clear Height Insulated Metal or Concrete Tilt
- Dock and/or Grade Loaded
- 1,000 SF Industrial Office with Restroom or BTS
- Sprinklers per Code
- LED Warehouse Lighting
- Paved Yard, On-Site Storm Detention

Specifications to be Further Defined with Tenant/Buyer

Lease Rate/Sale Price Available Upon Request

Delivery 9 Months after Fully Executed Lease or Purchase and Sale Agreement

Call Brokers with Questions

Greg Millerd, MBA

Senior Director
+1 206 521 0237
greg.millerd@cushwake.com

Nic Alfieri

Associate
+1 206 682 0666
nicolas.alfieri@cushwake.com



601 Union Street
Suite 1100
Seattle, WA 98101
Main +1 206 682 0666
Fax +1 206 521 0298
cushmanwakefield.com