

OFFICE FOR LEASE **STONY POINT II**

9020 STONY POINT PKWY
RICHMOND, VIRGINIA 23235



OWNED BY:



MANAGED AND LEASED BY:



THALHIMER

**SEVERAL SPACES
AVAILABLE**

PROPERTY HIGHLIGHTS



SEVERAL SUITES AVAILABLE



Spark Conference Center and collaborative common space equipped with WIFI and outdoor seating



Take 5 Market



Direct access to the walking and biking trails connecting to the Larus Park system



Front patio with seating and fountain



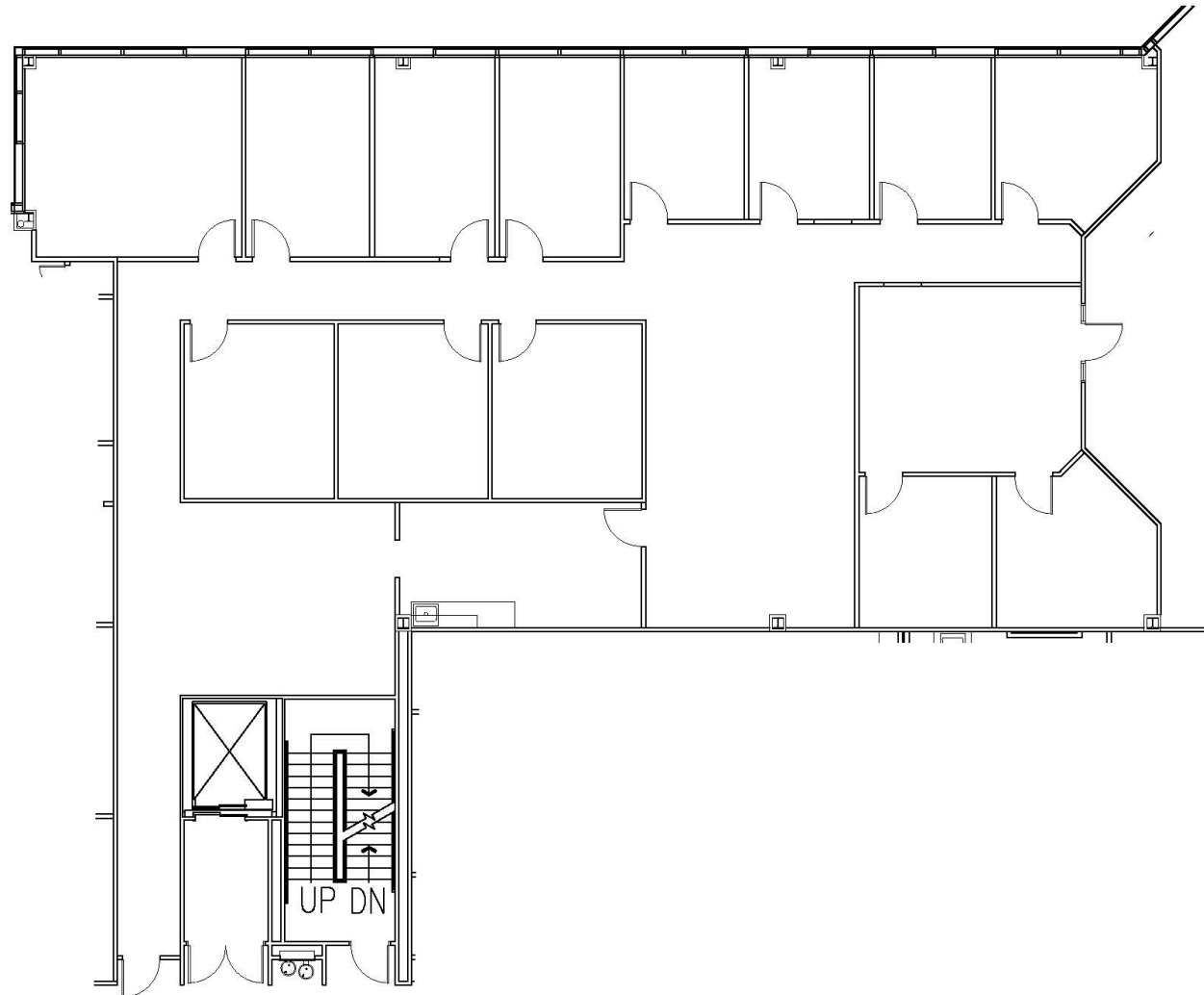
Storage space available within the buildings



AVAILABLE SPACES

Suite 100 - 4,713 SF

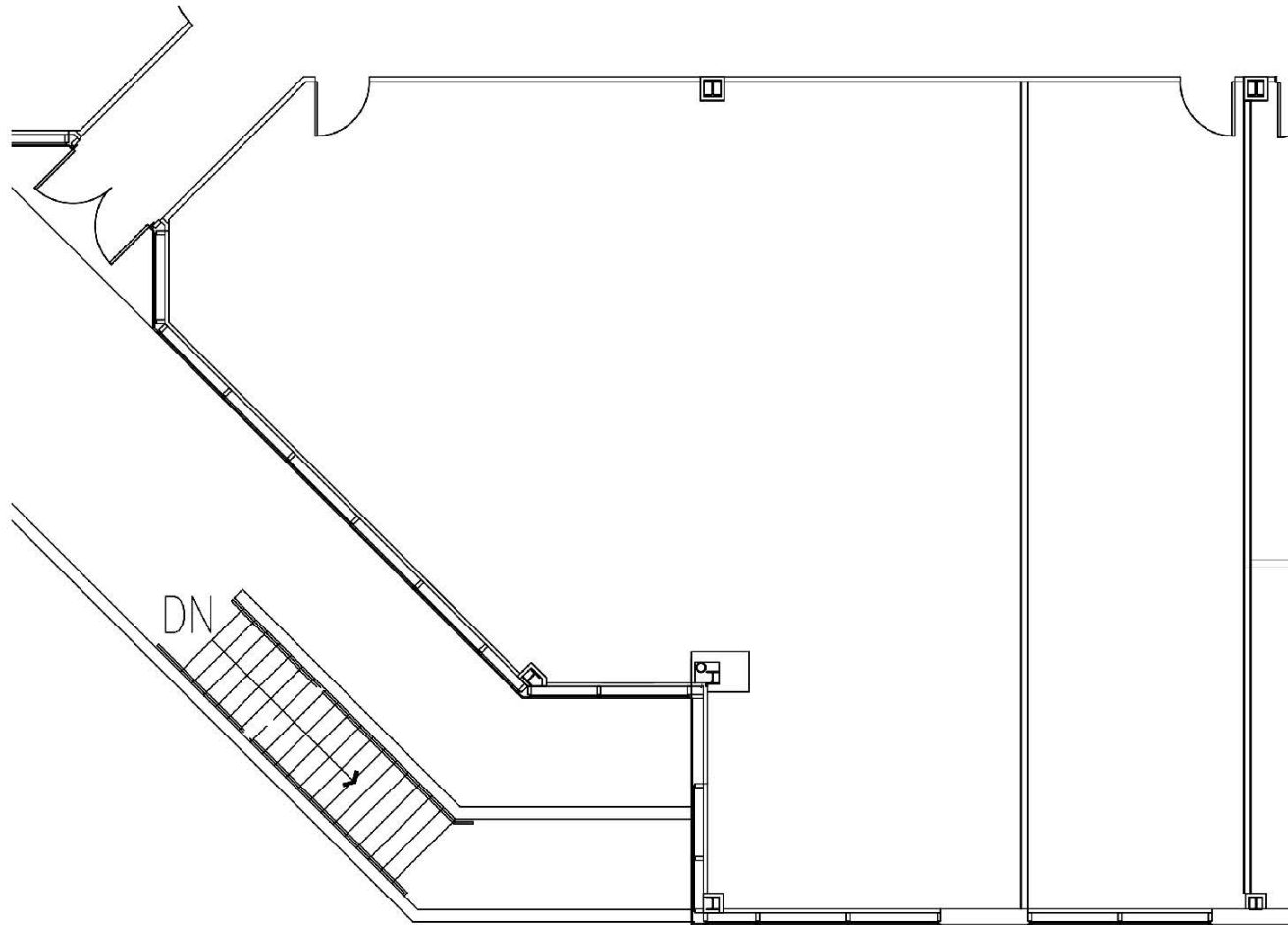
Available 4/1/2026



AVAILABLE SPACES

Suite 175 - 2,507 SF

Available Now

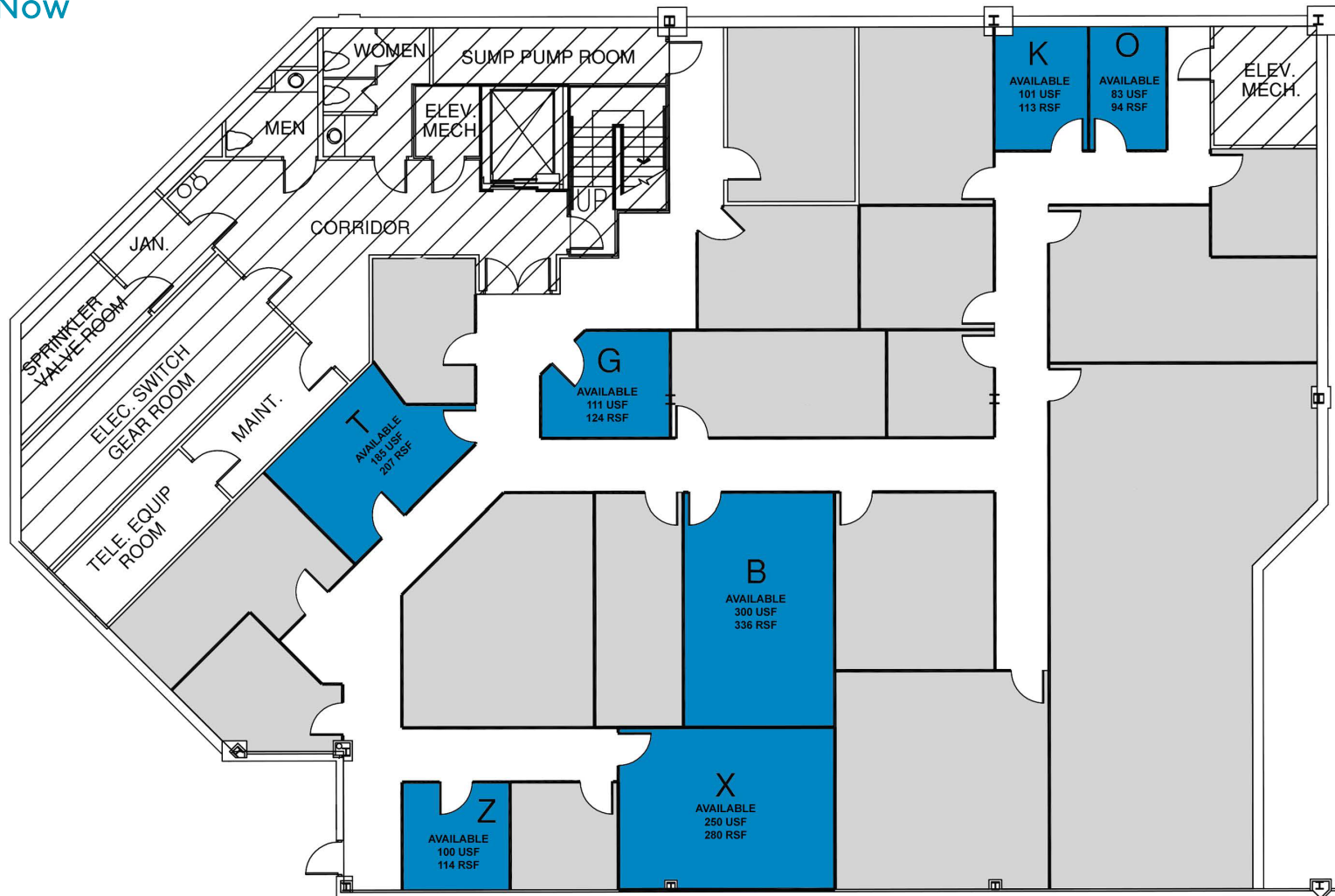


AVAILABLE SPACES

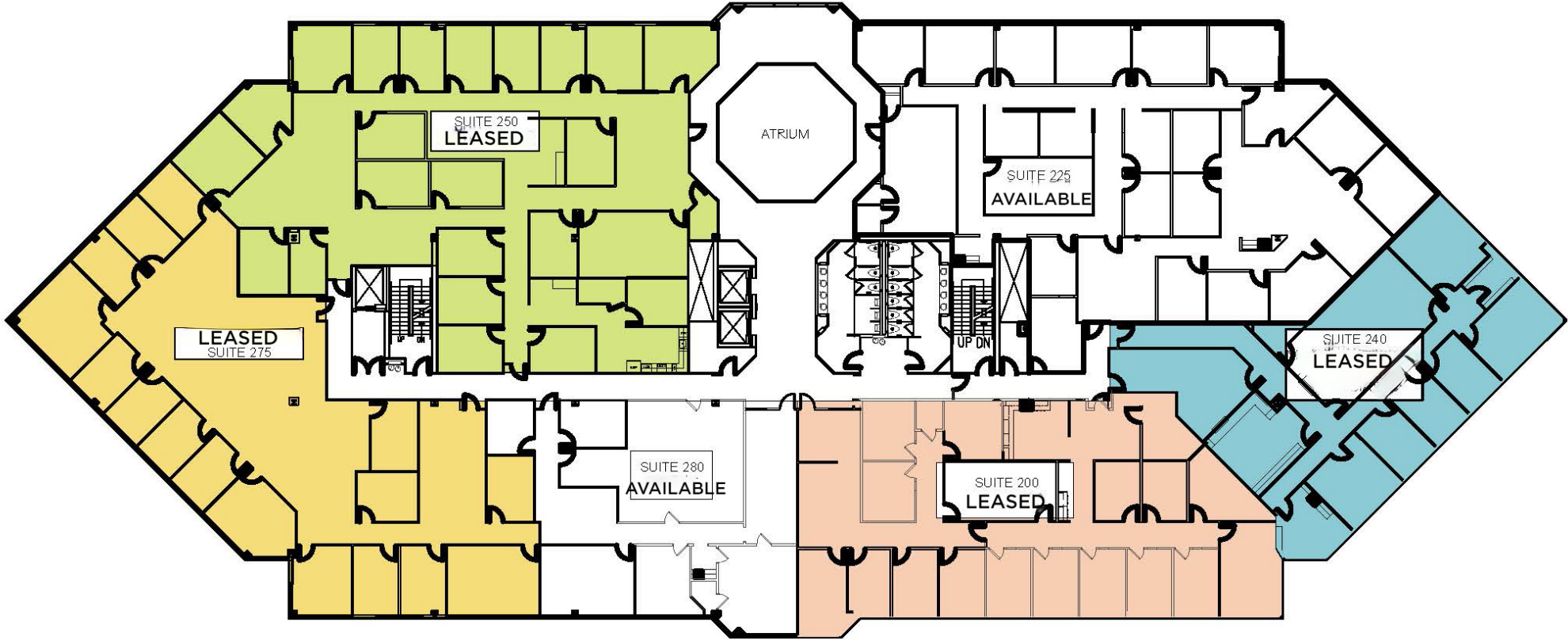
Suite Storage – 7 units

500 SF Per Unit

Available Now



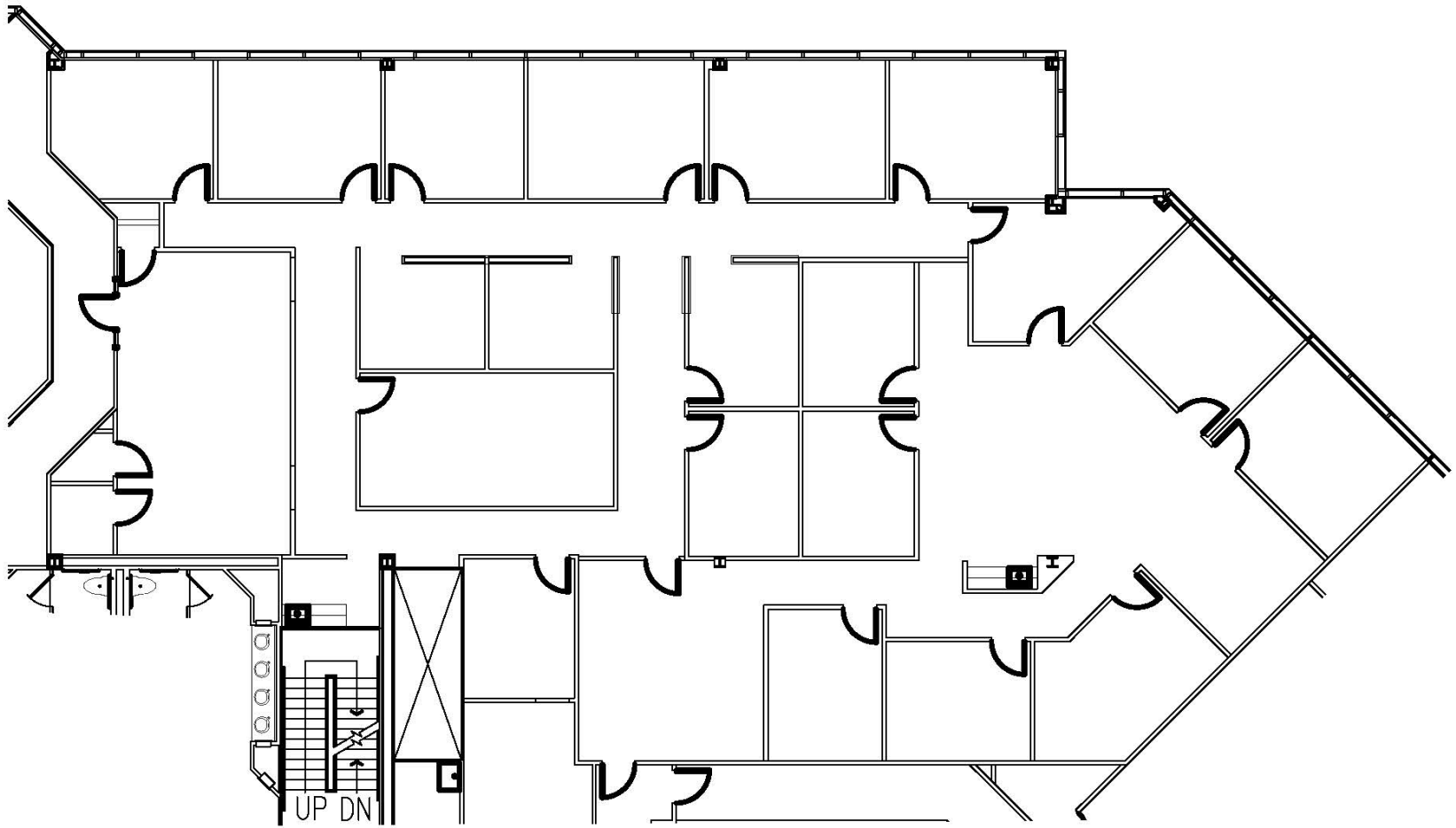
SECOND
FLOOR



AVAILABLE SPACES

Suite 225 - 7,193 SF

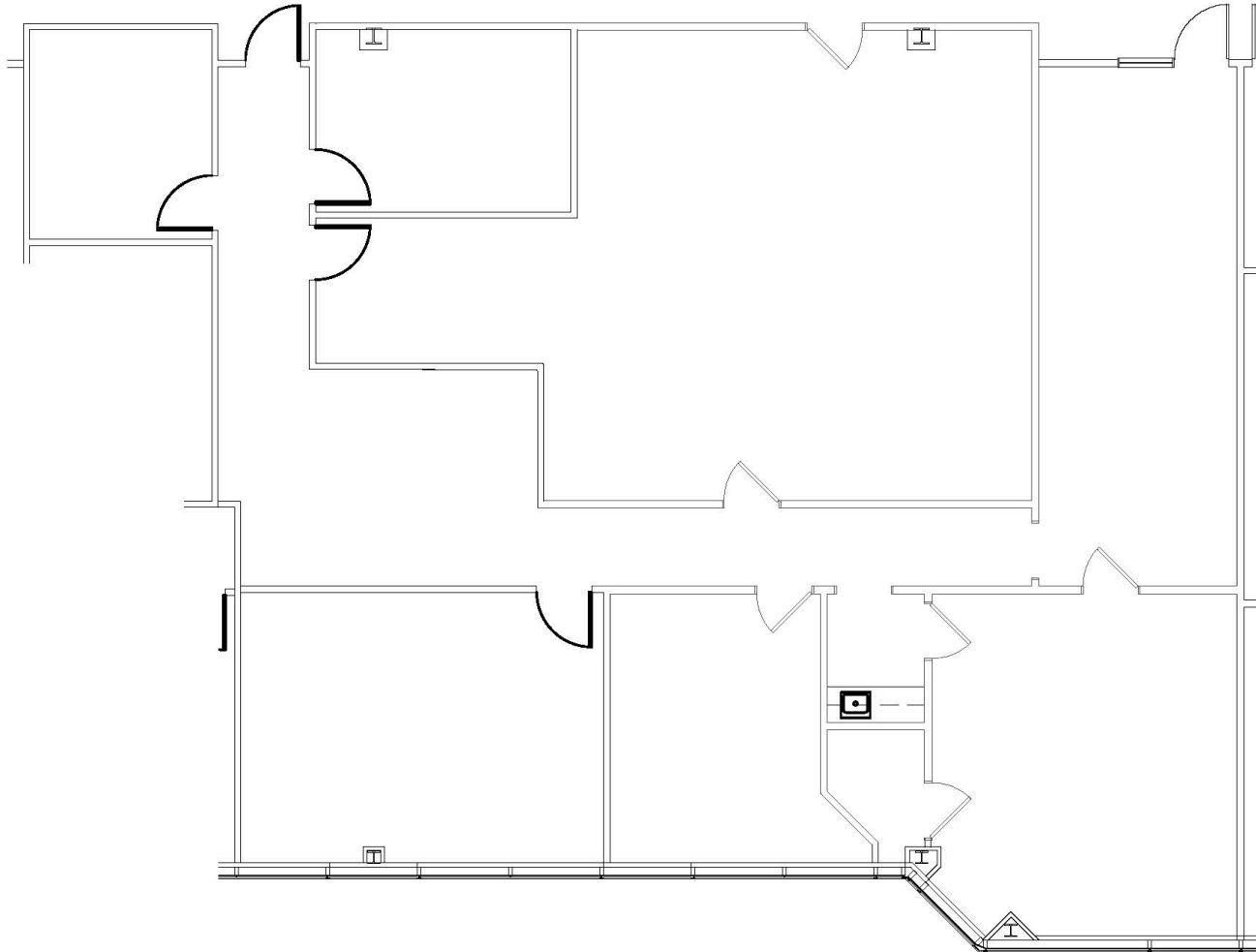
Available Now



AVAILABLE SPACES

Suite 280 - 3,181 SF

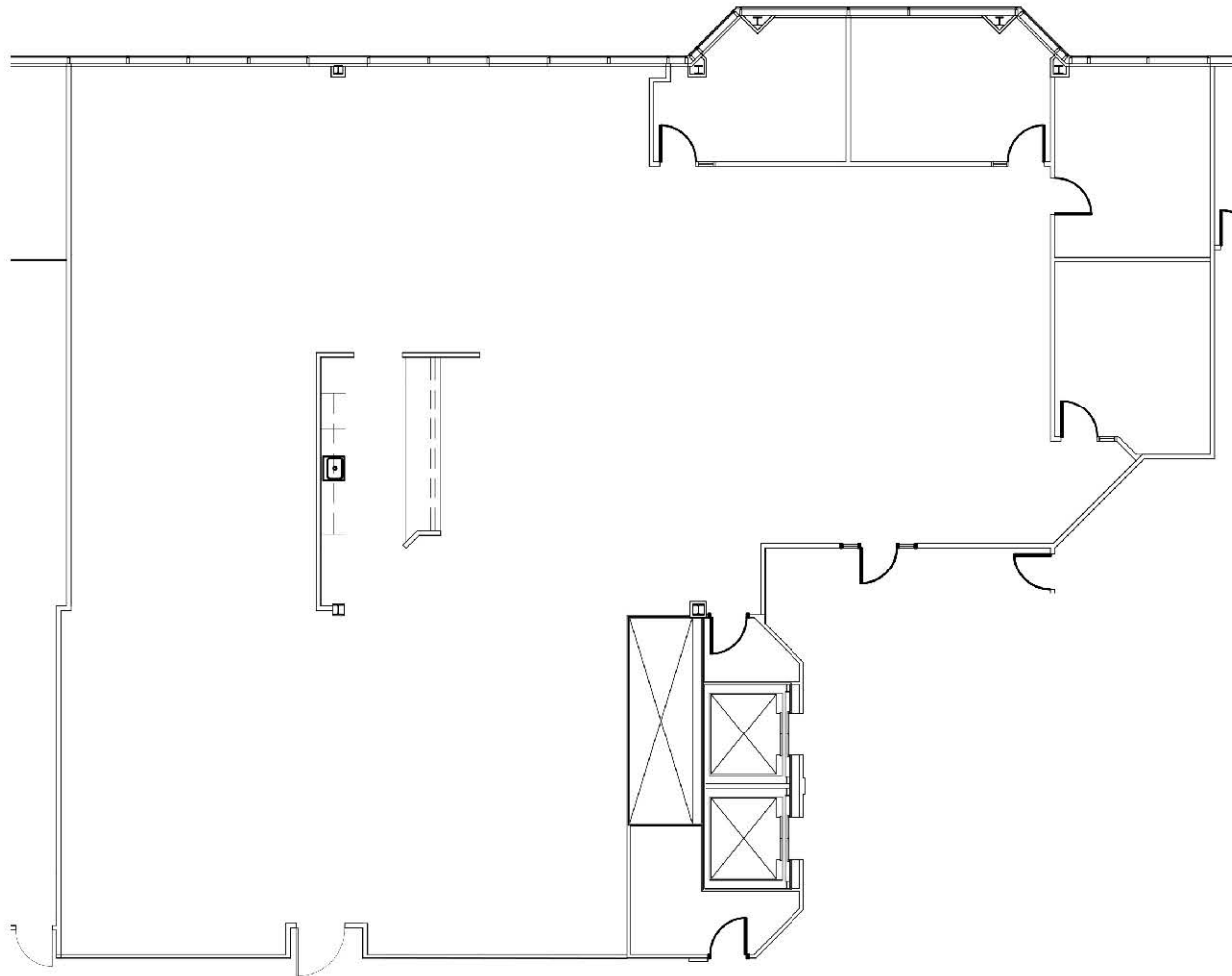
Available Now



AVAILABLE SPACES

Suite 300 - 6,462 SF

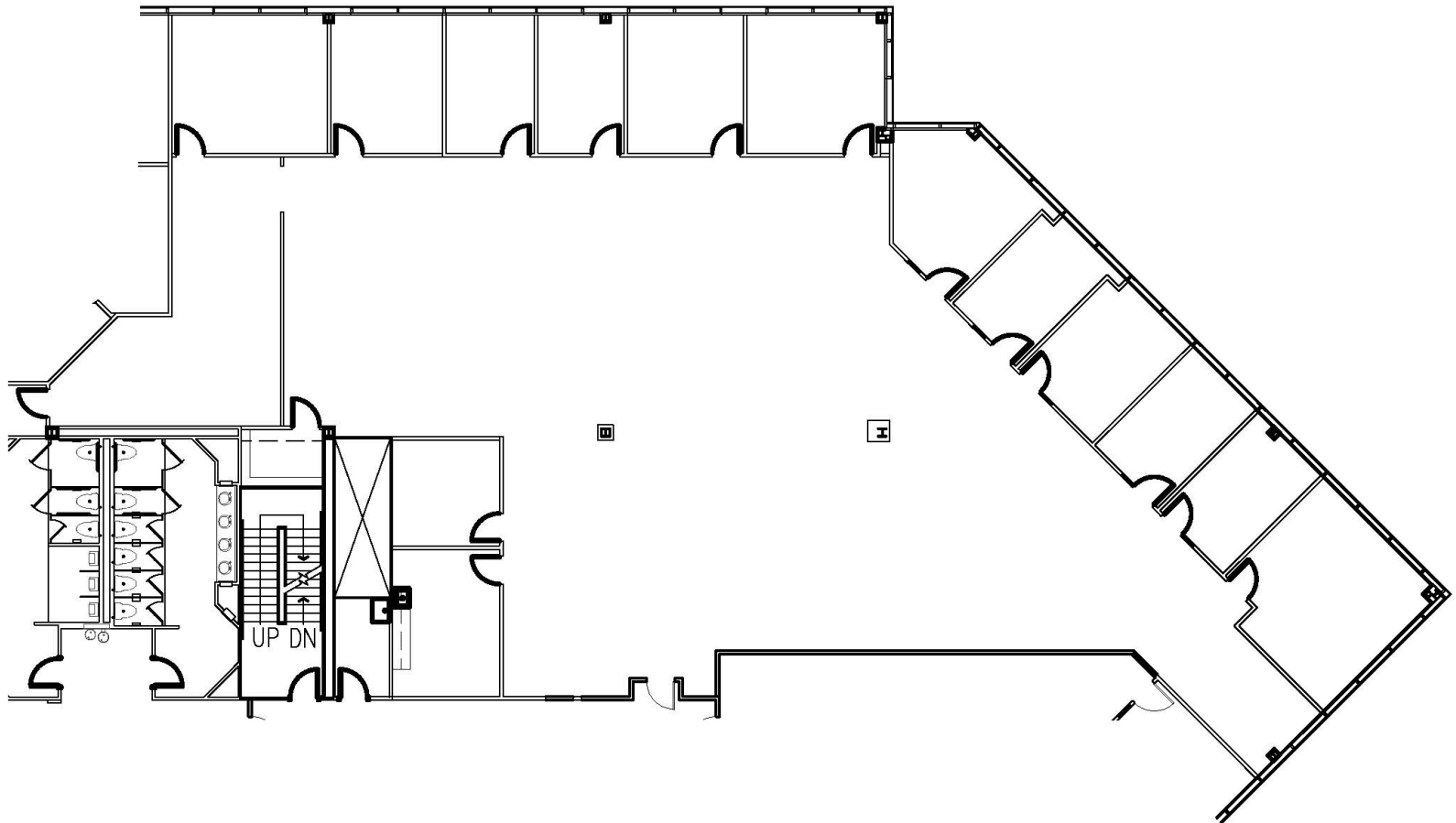
Available Now



AVAILABLE SPACES

Suite 350 - 8,718 SF

Available 1/1/2026





KRISTIE INGE
Senior Vice President
804 554 3563
kristie.inge@thalhimer.com

OWNED BY:



MANAGED AND LEASED BY:



Independently Owned and Operated / A Member of the Cushman & Wakefield Alliance

Cushman Wakefield | Thalhimer © 2025. No warranty or representation, express or implied, is made to the accuracy or completeness of the information contained herein, and same is submitted subject to errors, omissions, change of price, rental or other conditions, withdrawal without notice, and to any special listing conditions, imposed by the property owner(s). As applicable, we make no representation as to the condition of the property (or properties) in question.