

609 SE Central Parkway,
Stuart, FL 34994

CENTRAL PARKWAY PROFESSIONAL PLAZA



ALBERT BROWN
Sales Associate
T: 772.631.7989
E: albert@albertbrownre.com

765 SF

Stuart, FL

EXECUTIVE SUMMARY

609 SE Central Parkway, Stuart, FL 34994 | CENTRAL PARKWAY PROFESSIONAL PLAZA

SPECS

Building Size: 765 SF

Zoning: Office

Price: \$22 SF GROSS / YR / 3-5 YR Term

PROPERTY OVERVIEW

Discover the perfect office space at an unbeatable value with this 765 sq ft unit. This elegant office features a welcoming reception area, a cozy break spot, and French doors that open into a spacious office or conference area. Ideally situated off Central Parkway in Stuart, between US1 and Kanner Highway, this office offers both convenience and prestige. The inviting atmosphere is enhanced by large windows that fill the space with natural light. Enjoy the ease of ample parking available at both the front and rear of the building. Elevate your business operations in this prime location.



ALBERT BROWN

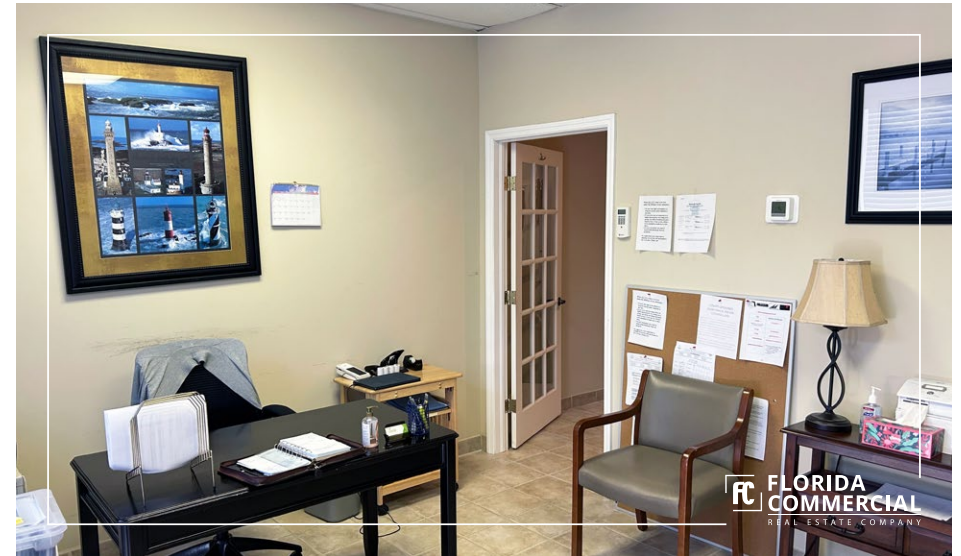
Sales Associate

T: 772.631.7989

E: albert@albertbrownre.com

765 SF

Stuart, FL



FLORIDA
COMMERCIAL
REAL ESTATE COMPANY



ALBERT BROWN
Sales Associate
T: 772.631.7989
E: albert@albertbrownre.com

765 SF

Stuart, FL

309 SE Osceola Street #104 • Stuart, FL 34994 • 772.223.3646 • florida-commercial.net

©Florida Commercial 2021 • This offering is subject to errors, prior to sale/lease, withdrawal, or change in price, terms or conditions without notice.



ALBERT BROWN
Sales Associate
T: 772.631.7989
E: albert@albertbrownre.com

765 SF

Stuart, FL

309 SE Osceola Street #104 • Stuart, FL 34994 • 772.223.3646 • florida-commercial.net

©Florida Commercial 2021 • This offering is subject to errors, prior to sale/lease, withdrawal, or change in price, terms or conditions without notice.

MAPS & REPORT

609 SE Central Parkway, Stuart, FL 34994 | CENTRAL PARKWAY PROFESSIONAL PLAZA



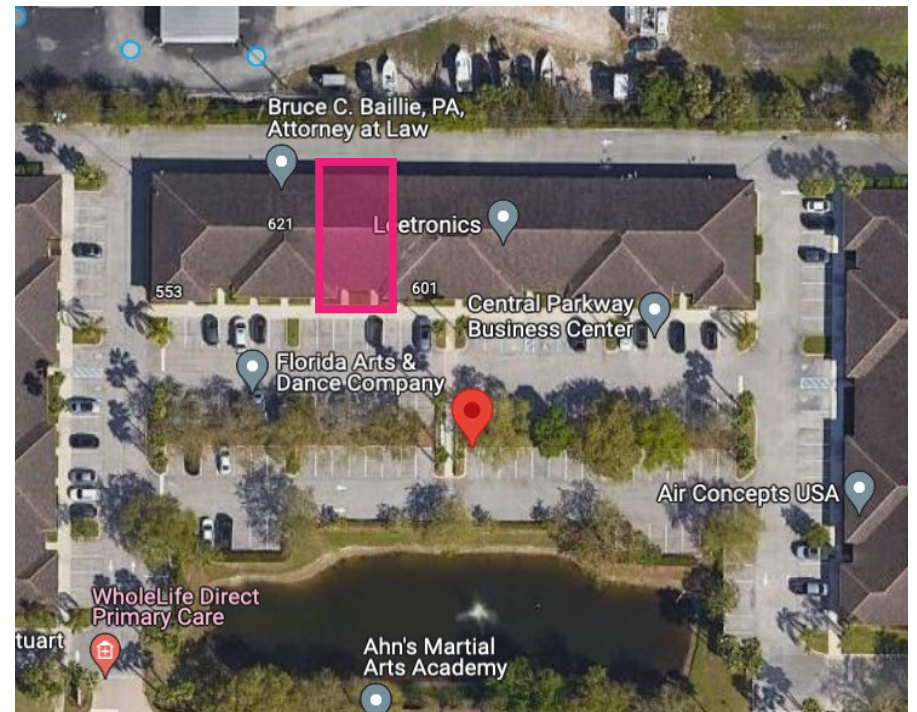
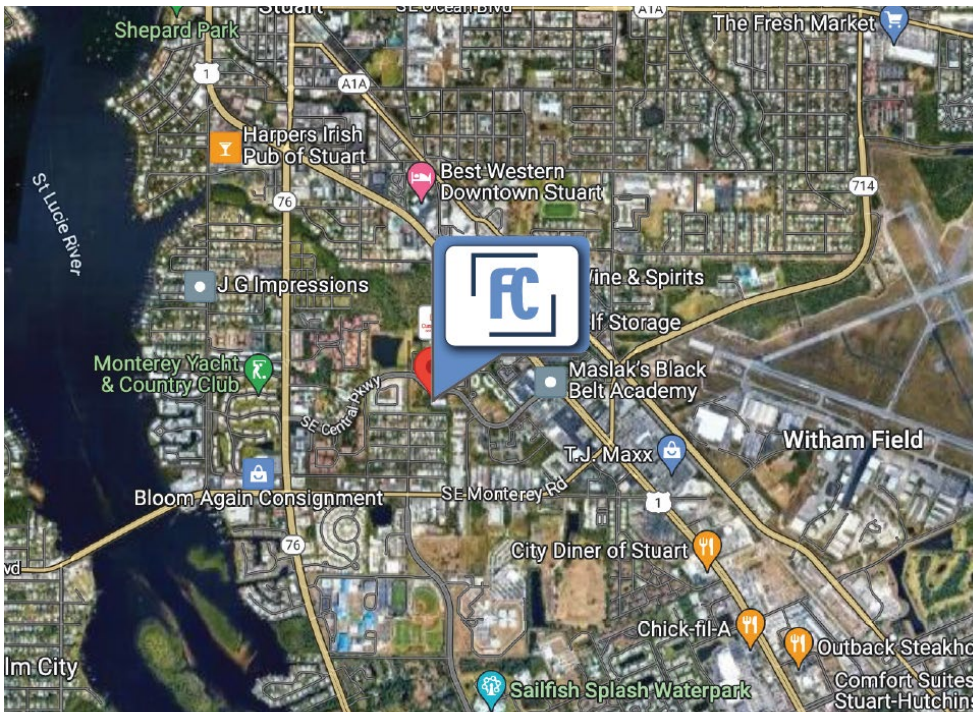
POPULATION

	1 MILE	3 MILES	5 MILES
Population	5,912	46,027	95,498
Median age	42.8	47.8	47.9



HOUSEHOLDS & INCOME

	1 MILE	3 MILES	5 MILES
Total households	2,583	19,939	40,283
# of Persons per HH	2.3	2.3	2.4
Average HH income	\$49,202	\$72,031	\$79,571



ALBERT BROWN

Sales Associate

T: 772.631.7989

E: albert@albertbrownre.com

765 SF

Stuart, FL