

Southwest Everett Industrial

2026 West Casino Road

Everett, Washington 98204

**FOR SALE
OR LEASE**

Paine Field Area: Superior Quality Manufacturing & Fenced Yards - 7,730± SF



- Minutes from SR 520, Airport Road, I-5, Paine Field, & Boeing
- Offices – 1,000 SF ± with Built-Ins + Kitchenette
- Masonry, Column-Free 18' Clear Height
- 600 Amp 480 3 Phase - LED Lighting
- Sprinklered & Compressed Air Lines
- Structural 10" Slab & Concrete Fenced Yard
- 12' x 14' OH Door & 9' x 8' Grade Level/Dock
- Exhaust System - Paint Booth -Dust Collector
- Racks & Compressed Air System included
- Additional Equipment Available
- Fenced Inner Yard
- LL-2 Zoning - Business Friendly Everett
- On Site Bus Stop

Area Info:

<https://snohomishcountywa.gov/1513/Our-StrengthsTMM>

<https://www.painefield.com/27/About-Our-Airport>

<https://www.sba.gov/federal-contracting/contracting-assistance-programs/hubzone-program>

Larry Ingraham, CCIM

206-745-5507

The information supplied in this package is from sources we deem reliable. It is provided without any representation, warranty or guarantee, expressed or implied, as to its accuracy.

Emerald Properties
Brokerage & Development, LLC

18009 Highway 99, Suite L • Lynnwood, WA 98037
425-744-0900 • emeraldre.com

© 2024 Emerald Properties Brokerage & Development, LLC

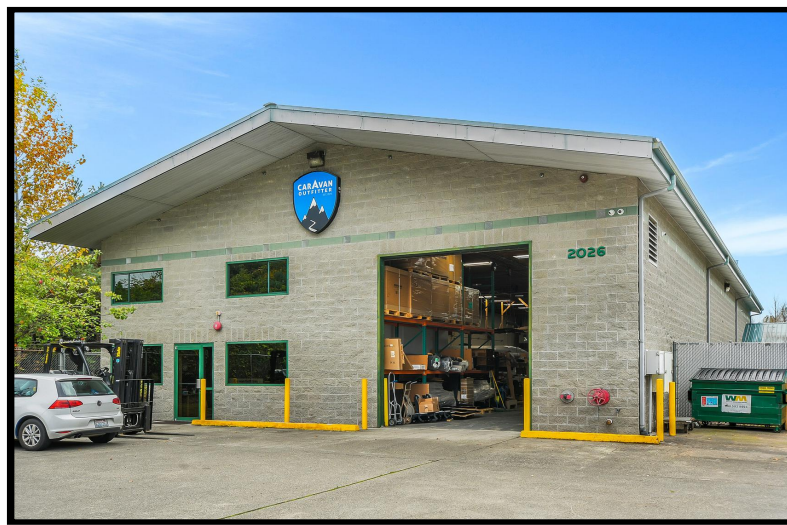
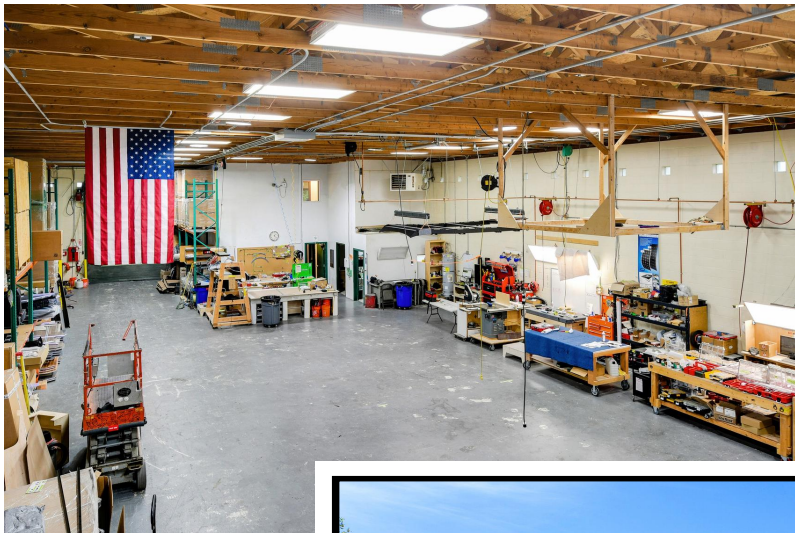


Southwest Everett Industrial

2026 West Casino Road

Everett, Washington 98204

**FOR SALE
OR LEASE**



Larry Ingraham, CCIM

206-745-5507

The information supplied in this package is from sources we deem reliable. It is provided without any representation, warranty or guarantee, expressed or implied, as to its accuracy.

Emerald Properties
Brokerage & Development, LLC

18009 Highway 99, Suite L • Lynnwood, WA 98037
425-744-0900 • emeraldre.com



Southwest Everett Industrial

2026 West Casino Road

Everett, Washington 98204

FOR SALE
OR LEASE



Larry Ingraham, CCIM

206-745-5507

The information supplied in this package is from sources we deem reliable. It is provided without any representation, warranty or guarantee, expressed or implied, as to its accuracy.

Emerald Properties
Brokerage & Development, LLC

18009 Highway 99, Suite L • Lynnwood, WA 98037
425-744-0900 • emeraldre.com

© 2024 Emerald Properties Brokerage & Development, LLC

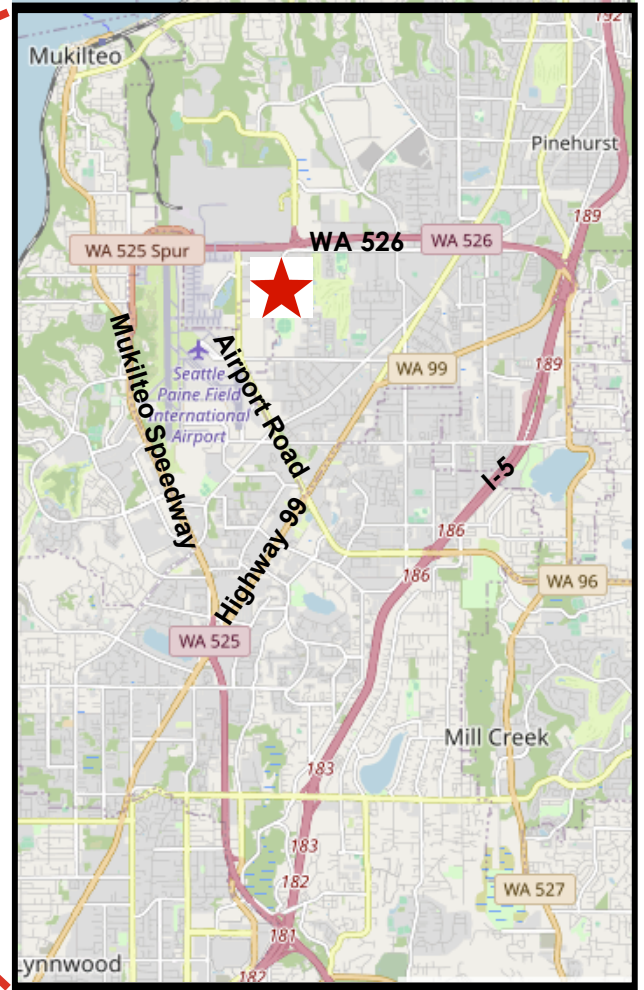
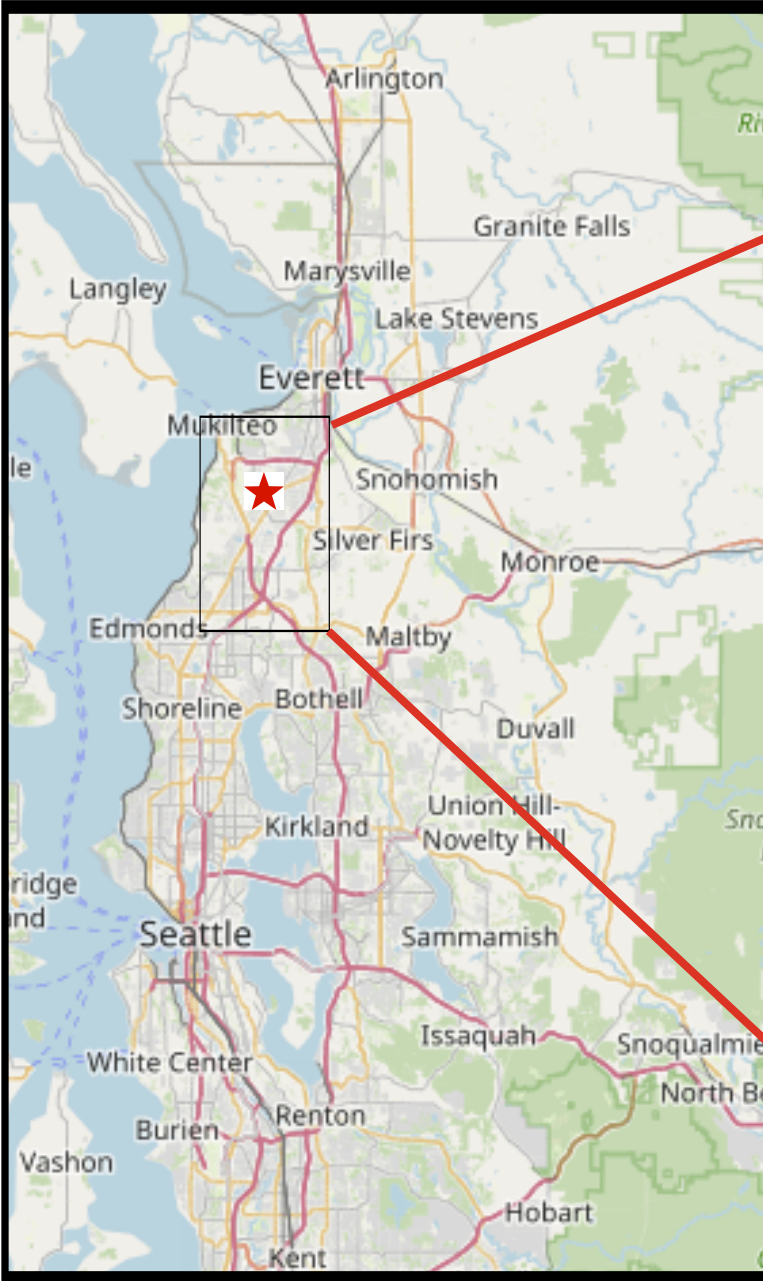


Southwest Everett Industrial

2026 West Casino Road

Everett, Washington 98204

FOR SALE OR LEASE



Minutes from SR 520,
Airport Road, I-5,
Paine Field, & Boeing

Larry Ingraham, CCIM

206-745-5507

The information supplied in this package is from sources we deem reliable. It is provided without any representation, warranty or guarantee, expressed or implied, as to its accuracy.

Emerald Properties
Brokerage & Development, LLC

18009 Highway 99, Suite L • Lynnwood, WA 98037
425-744-0900 • emeraldre.com

