

INDUSTRYPARTNERS.COM

310 395 5151

CA BRE No. 01900833

ARAM POGOSIAN

ap@industrypartners.com

CA BRE No. 01816276

MAGUIRE PARSONS

mp@industrypartners.com

CA BRE No. 02047123

GEOFFREY ANENBERG

geoffrey@normal-properties.

comCA BRE No. 02047123

SILVER LAKE

INDUSTRY

1215  
BATES AVE



INDUSTRY





FOR SALE

1215 BATES AVE SILVER LAKE

INDUSTRYPARTNERS.COM CA BRE NO. 01900833



# HISTORIC PHOTOS



# ABOUT

Built in 1916 by silent film pioneer Mack Sennett, this iconic Los Angeles landmark has evolved into one of the city's most versatile creative campuses. Renovated in 2012, the 26,000+ square foot facility blends Hollywood history with state-of-the-art production amenities, offering two soundproof sound stages, world-class recording studios, editorial suites, green rooms, and set construction space. Over the past century, the studio has

hosted legendary names from Charlie Chaplin and Bing Crosby to Michael Jackson, Martin Scorsese, Pharrell Williams, and countless global brands. Today, Mack Sennett Studios continues its legacy as a hub for film, television, music, fashion, art, and live events, while also offering unique experiences like Mabel's Speakeasy—its one-of-a-kind private bar and performance space

**±26,042 RSF**  
building area

**Upon Request**  
sale price / lease rate

**12,288 SF**  
land area

**1916**  
year built

**C2**  
zoning

**5429-007-001**  
apn

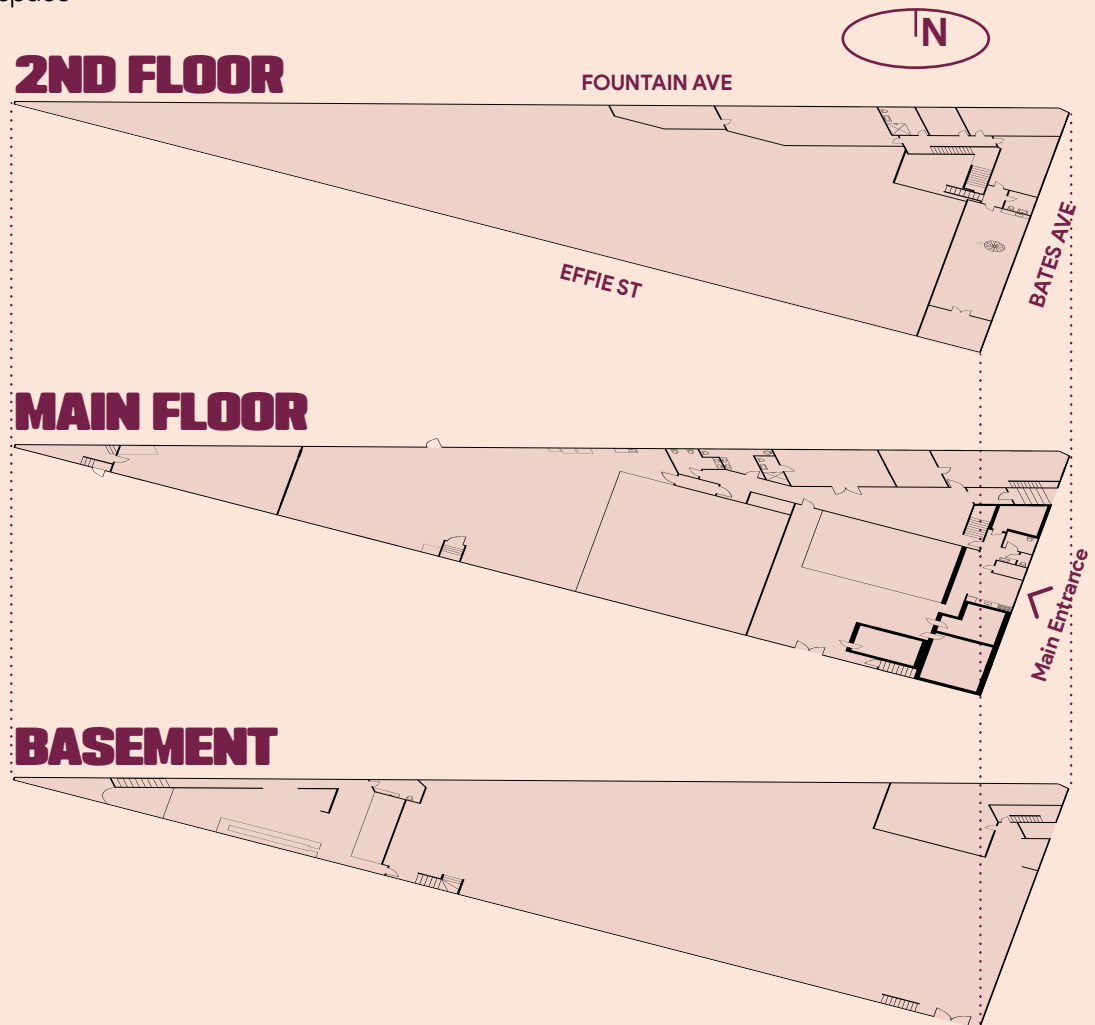
**Con-  
tact**

**ARAM POGOSIAN**  
ap@industrypartners.com  
BRE Lic. 01816276

**MAGUIRE PARSONS**  
mp@industrypartners.com  
BRE Lic. 01900833

**GEOFFREY ANENBERG**  
geoffrey@normal-properties.com  
BRE Lic. 01831214

**INDUSTRYPARTNERS.COM**  
310 395 5151  
Lic. 01816276



# FEATURES

## **2** Sound Stages

with adjustable  
light rails and  
speed rails

## **1600** Amps

of power

## **STUDIO** Recording+Mixing

State-of-the-art facility  
designed for professional-  
grade audio production

## **Multiple** GREEN ROOMS

dedicated hair & makeup  
areas, dressing rooms, and  
private vanity spaces

## **Oversized** ELEPHANT DOOR

with ramp for loading gear,  
vehicles, and large-scale  
production pieces

## **SPEAKEASY** Basement Bar

(Mabel's) perfect for  
events, live music, filming.

## **FULLY EQUIPPED** MILL

for custom set design and  
construction

## **PRODUCTION** AMENITIES

White Cyc Wall  
Full Catwalk  
Green Screen  
Kitchen  
High-speed WiFi (600×30)  
Private bathrooms & shower

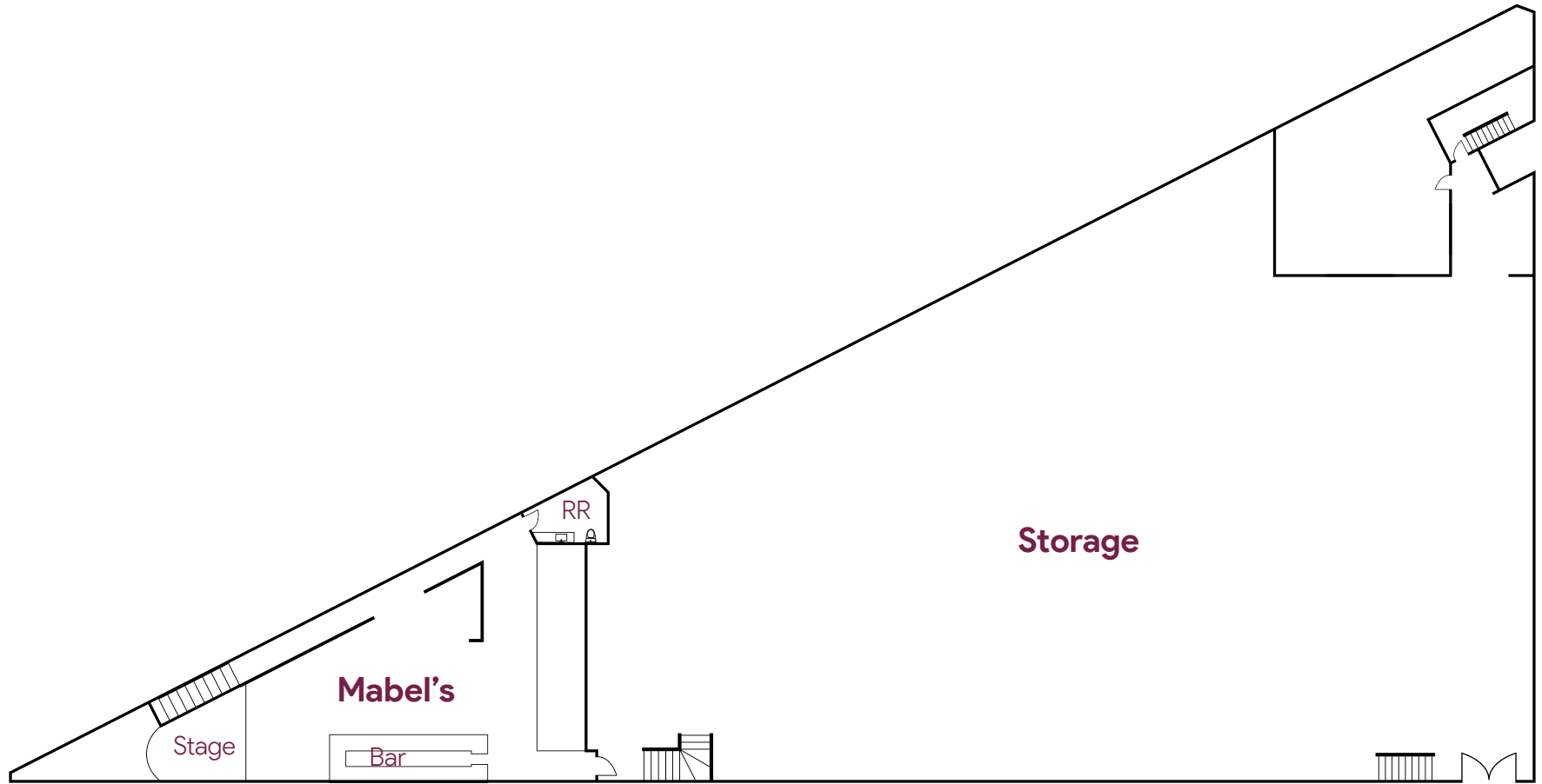


KKW Fragrance shoot  
at 1215 Bates Ave



# FLOOR

BASEMENT



# PLAN

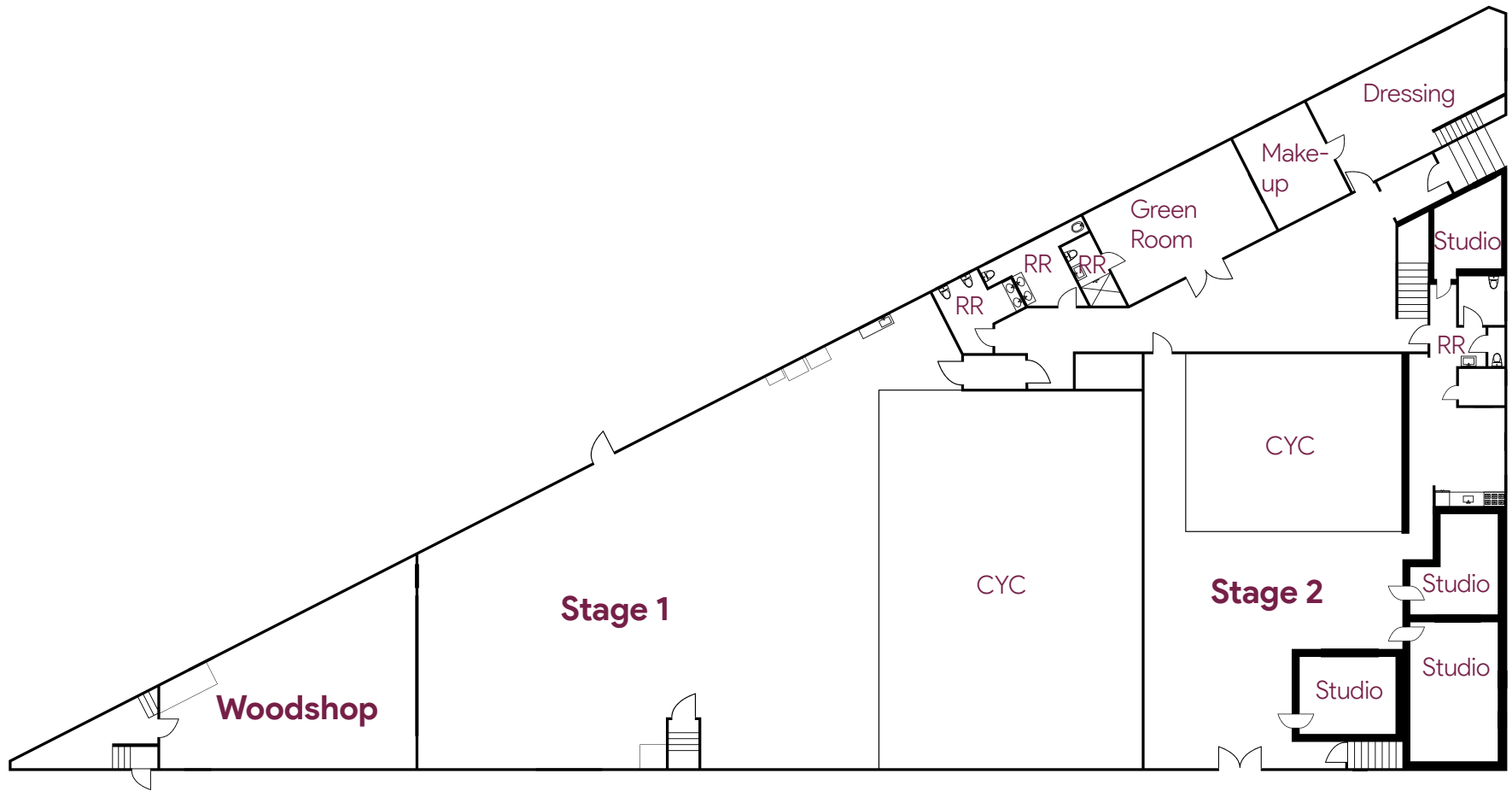
FOR SALE

1215 BATES AVE SILVER LAKE

INDUSTRYPARTNERS.COM CA BRE NO. 01900833

# FLOOR

MAIN FLOOR



# PLAN

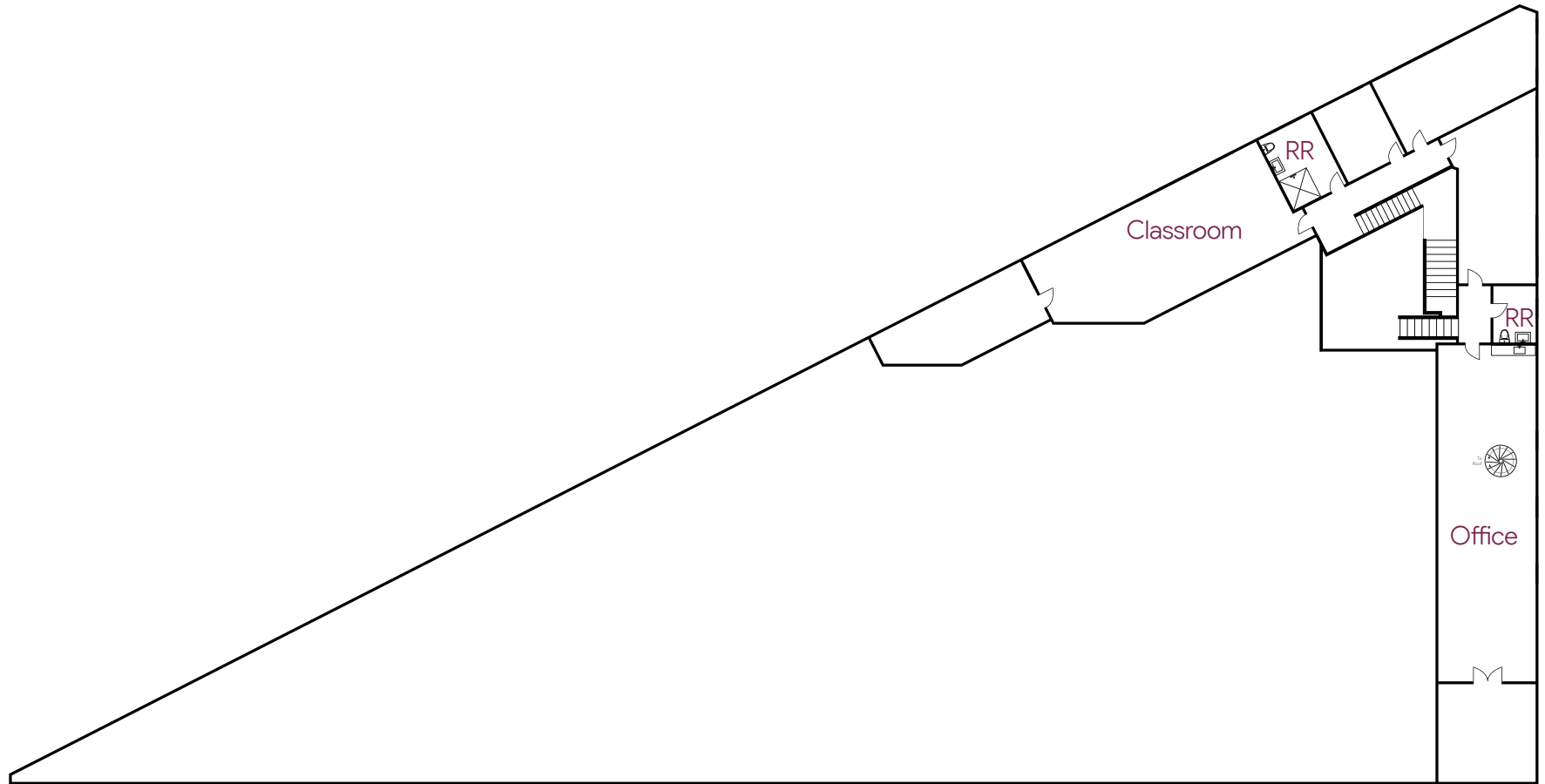
FOR SALE

1215 BATES AVE SILVER LAKE

INDUSTRYPARTNERS.COM CA BRE NO. 01900833

# FLOOR

SECOND FLOOR



# PLAN

FOR SALE

1215 BATES AVE SILVER LAKE

INDUSTRYPARTNERS.COM CA BRE NO. 01900833



# PART



FOUNTAIN AVE

SUNSET BLVD

BATES AVE

EFFIE ST

# KING

FOR SALE

1215 BATES AVE SILVER LAKE

INDUSTRYPARTNERS.COM

CA BRE NO. 01900833





#### Vista Theater

A beloved single-screen landmark showcasing indie films, cult classics, and new releases in a gorgeously restored Art Deco space that radiates cinematic nostalgia.



#### Barnsdall Art Park

A hillside cultural haven featuring art galleries, gardens, and the iconic Hollyhock House—perfect for picnics, creativity, and sweeping city views.



#### Maru Coffee

A minimalist café celebrated for its meticulously sourced beans and serene atmosphere, serving some of the city's most balanced espresso drinks.



#### Sunset Junction

A lively crossroads of culture, dining, and design—home to indie boutiques, creative eateries, and the neighborhood's signature energy.



#### Kettl Tea

An elegant Japanese tea house known for its matcha and handcrafted ceramics, offering a calm retreat and an education in modern tea culture.



#### Silverlake Reservoir

A scenic loop for joggers and strollers alike, encircled by greenery and mid-century homes, offering a peaceful escape in the middle of the city.



#### Skylight Books

A treasured independent bookstore filled with natural light, curated titles, and a cozy literary spirit that fosters discovery and conversation.



#### Saffy's

A vibrant restaurant blending Middle Eastern flavors with California flair—known for its grilled meats, bold spices, and joyful atmosphere.



#### Found Oyster

An intimate neighborhood seafood bar serving impeccably fresh oysters, lobster rolls, and chilled wines in a laid-back, coastal-cool setting.



#### Courage Bagels

A cult-favorite spot reimagining the classic bagel with wood-fired dough, heirloom tomatoes, and house-cured salmon—all served with effortless charm.

# AMENITIES

# AREA



FOR SALE

1215 BATES AVE SILVER LAKE

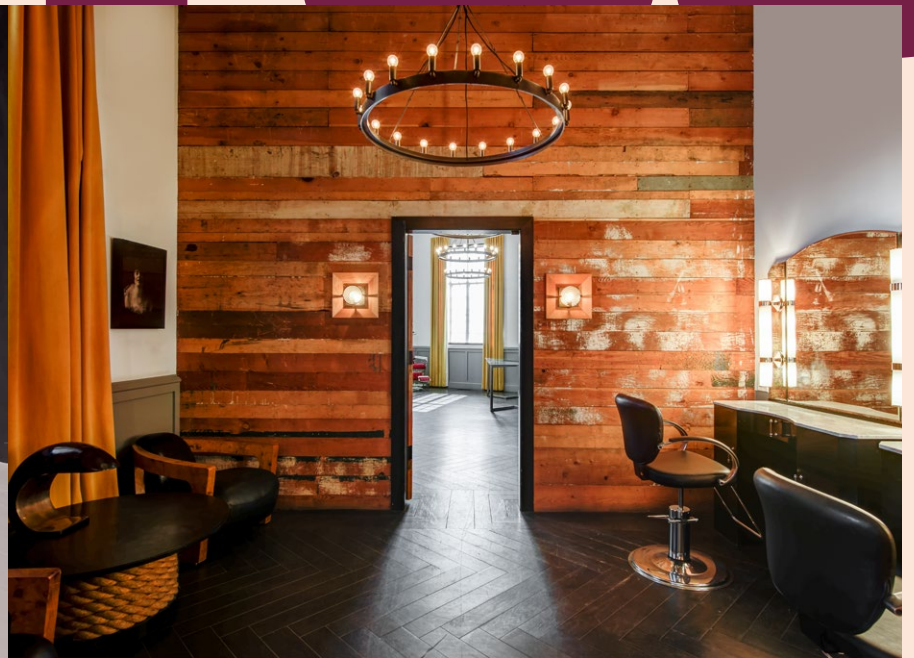
INDUSTRYPARTNERS.COM

CABRE NO. 01900833

# AMENITIES



STAGE 1



FOR SALE

1215 BATES AVE SILVER LAKE

INDUSTRYPARTNERS.COM CA BRE NO. 01900833



STAGE 2

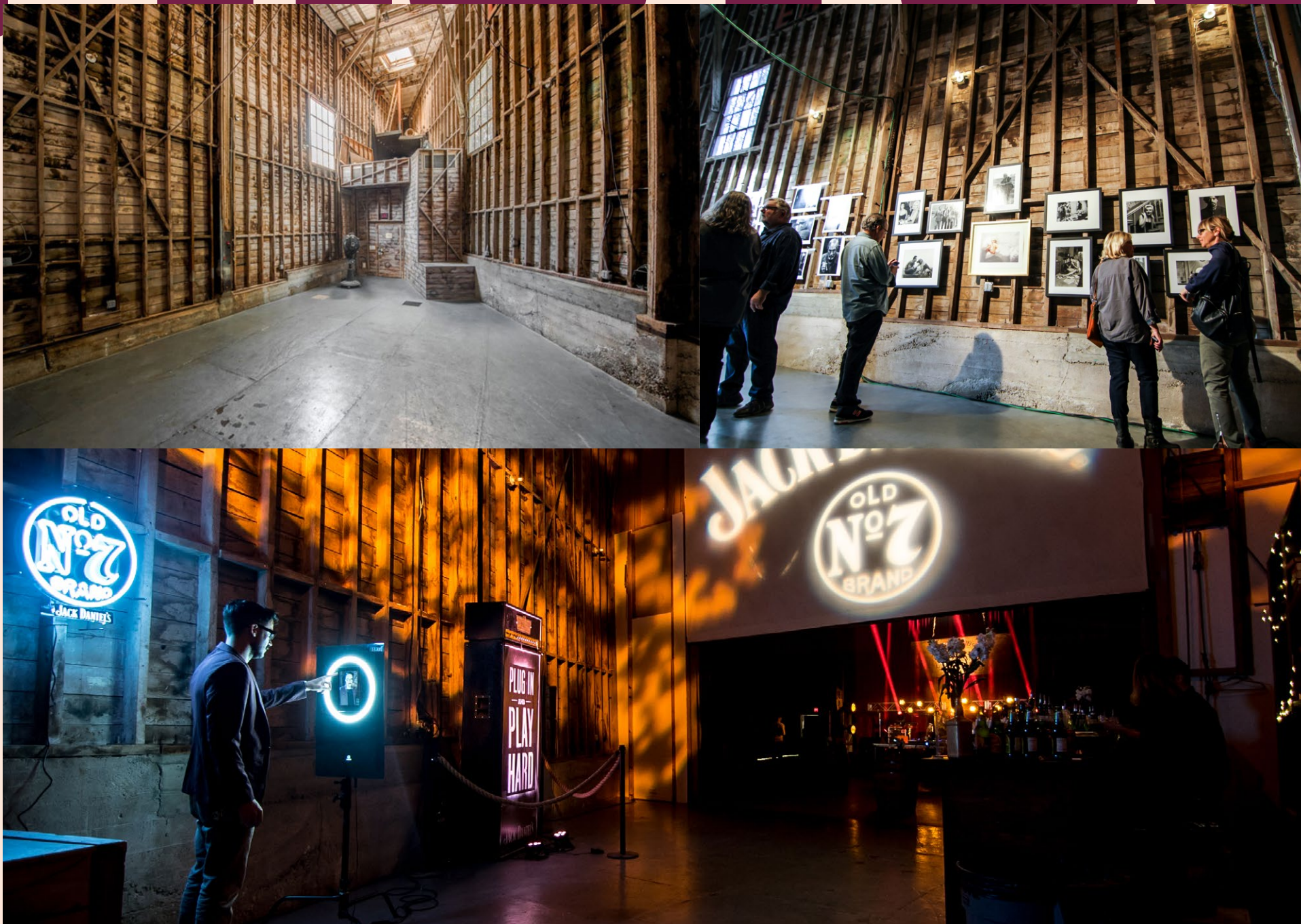


FOR SALE

1215 BATES AVE SILVER LAKE

INDUSTRYPARTNERS.COM CA BRE NO. 01900833







SPEAKEASY



FOR SALE

1215 BATES AVE SILVER LAKE

INDUSTRYPARTNERS.COM CA BRE NO. 01900833



RECORDING



FOR SALE

1215 BATES AVE SILVER LAKE

INDUSTRYPARTNERS.COM CA BRE NO. 01900833

# CON-

## INDUSTRY



**Con-  
tact**

**ARAM POGOSIAN**

ap@industrypartners.com  
BRE Lic. 01816276

**MAGUIRE PARSONS**

mp@industrypartners.com  
BRE Lic. 01900833

**GEOFFREY ANENBERG**

geoffrey@normal-properties.com  
BRE Lic. 01831214

**INDUSTRYPARTNERS.COM**

310 395 5151  
Lic. 01816276

# TACT