

FOR LEASE 404 OPELIKA ROAD – AUBURN, AL



ACRES:
.32 Acres with ample Parking

ADDRESS: 404 Opelika Rd. Auburn AL 36803

SQUARE FEET:
+/- 1,550

Location:
Just off Downtown Auburn. At the corner off Ross St. and Opelika Rd. Across from the Auburn US Post Office.

ZONING:
CRD-U Corridor Redevelopment
District - Urban

Summary:
+/- 1,550 sqft of office space is available for lease as one space on two floors

TRAFFIC COUNTS:
+/- 16,000 - Cars daily at intersection
of Opelika Rd & Ross St



Office Address
2680 Corporate Park Dr.
Opelika, AL, 36831
www.comcre.com

Craig Melton
Broker
334-559-4914 Mobile
comprehensivecre@gmail.com

OVERVIEW

Incredible opportunity to lease office real estate in rapidly growing Opelika/Auburn. Currently Six people a day are moving to Opelika/Auburn. Highly visible office Space right off of downtown Auburn on heavily traveled local corridor.

PROPERTY HIGHLIGHTS

Signage on Opelika Rd
Convenient to all of Auburn
Easy ingress and egress
Irreplaceable location

PROPERTY SUMMARY

Asking Rent: \$3,000 per month
Year Built: 1955
Total SF: 1,550

LOCATION HIGHLIGHTS

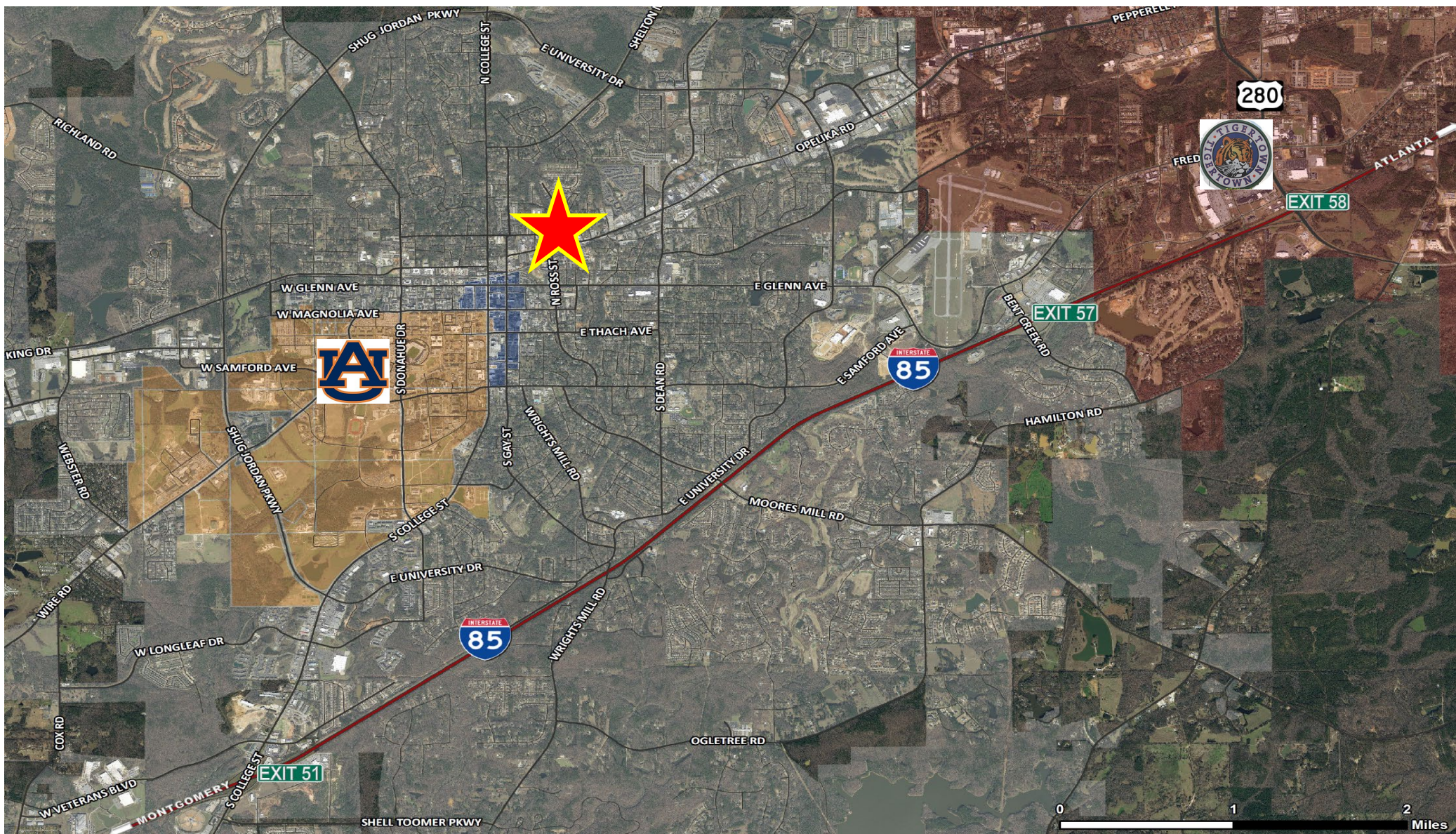
Next to the US Post Office
Signalized Intersection
Plenty of Parking
6 Offices or Rooms
1 Kitchen
Copy/Storage Room
2 Bathrooms



Office Address
2680 Corporate Park Dr.
Opelika, AL, 36831
www.comcre.com

Craig Melton
Broker
334-559-4914 Mobile
comprehensivecre@gmail.com

AERIAL MAP



Office Address
2680 Corporate Park Dr.
Opelika, AL, 36831
www.comcre.com

Craig Melton
Broker
334-559-4914 Mobile
comprehensivecre@gmail.com

PHOTOS



Office Address
2680 Corporate Park Dr.
Opelika, AL, 36831
www.comcre.com

Craig Melton
Broker
334-559-4914 Mobile
comprehensivecre@gmail.com