

2,474 - 4,949 SF AVAILABLE

4787 CLARK HOWELL HWY

ATLANTA, GA 30349





4787 CLARK HOWELL HIGHWAY, ATLANTA, GEORGIA 30349

This 24,800 sq. ft. building, situated on a 1.28-acre lot, offers efficient operations with 12' x 12' grade-level doors and flexible configurations to meet a variety of needs. Ideally located just over half a mile from I-285 and only 1.6 miles from Hartsfield-Jackson Atlanta International Airport, the property provides exceptional accessibility for logistics and distribution with Suites 4, 5, and 7 currently available.

BUILDING SPECS

BUILDING SIZE 24,800 SF

SUITE 4 2,474 SF

SUITE 5 2,475 SF

SUITE 7 2,483 SF

LOT SIZE 1.28 acres

CLEAR HEIGHT 15'

LOADING Grade level (12'x12')

BUILDING DEPTHS 90' - 100'

LIGHTING Warehouse LED

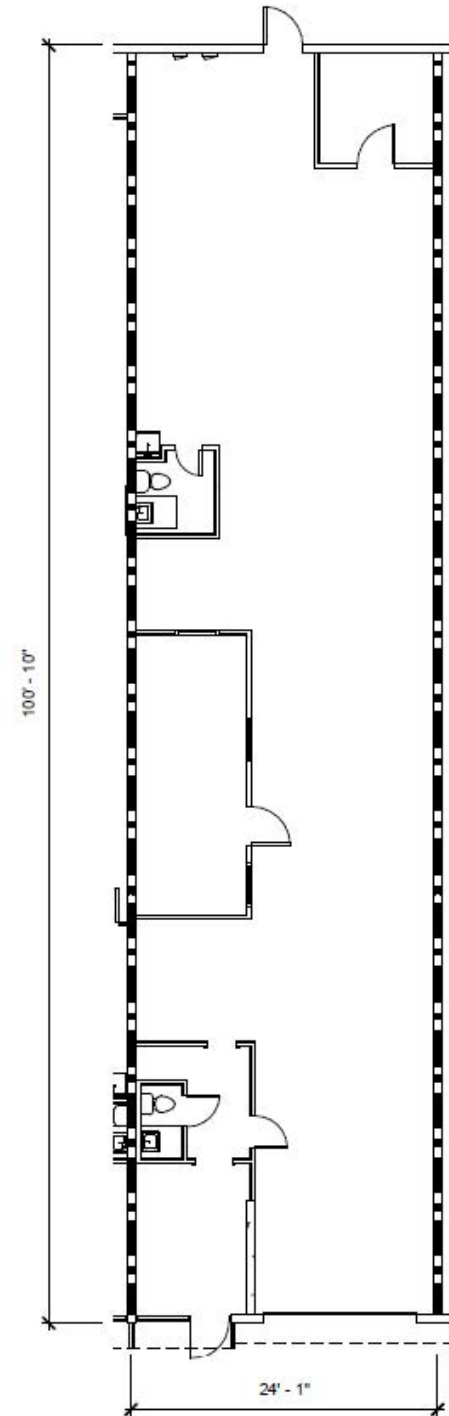
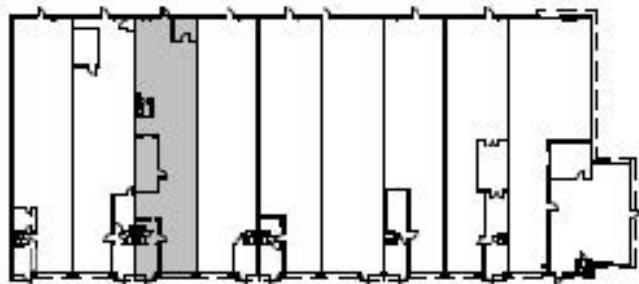
COUNTY Clayton



SUITE 4 SPECS

AVAILABLE	2,474 SF
OFFICE SPACE	440 SF
LOADING	1 grade level door
CONTIGUOUS SF	Can be combined with suite 5 for 4,949 SF

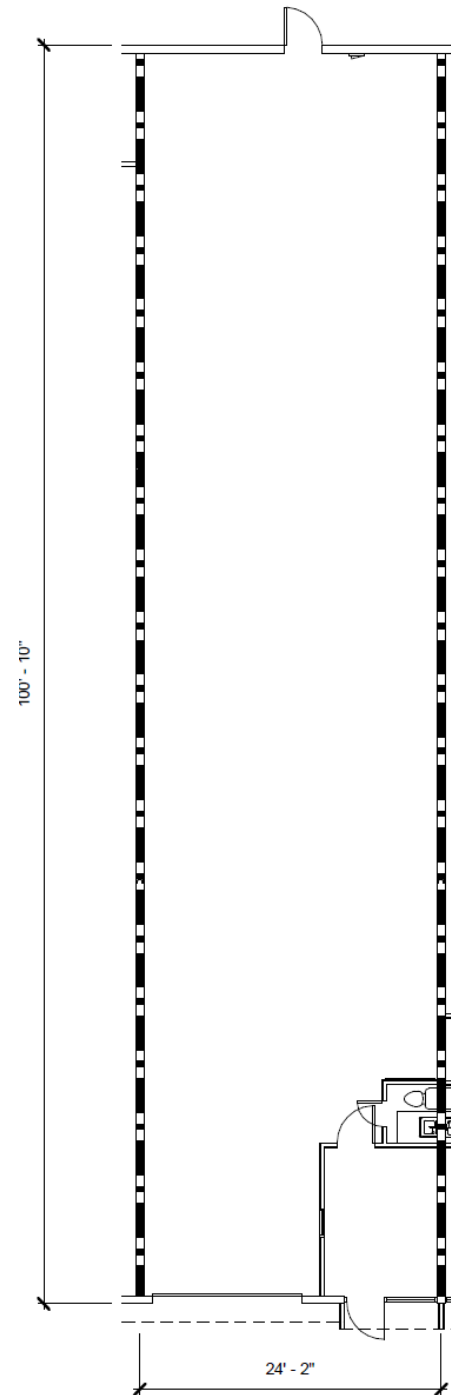
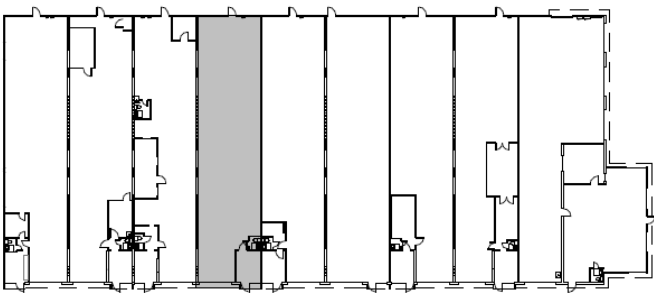
KEY PLAN



SUITE 5 SPECS

AVAILABLE	2,475 SF
OFFICE SPACE	162 SF
LOADING	1 grade level door
CONTIGUOUS SF	Can be combined with suite 4 for 4,949 SF

KEY PLAN

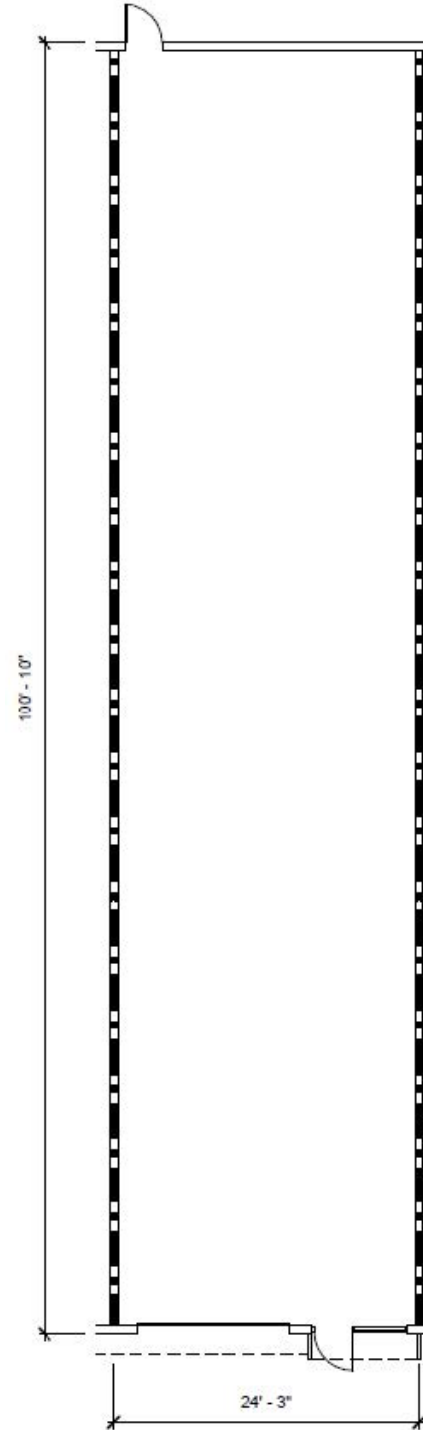
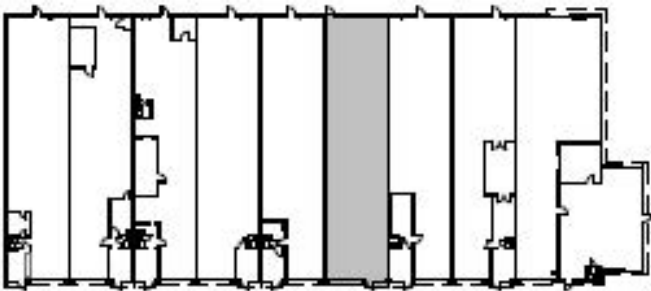


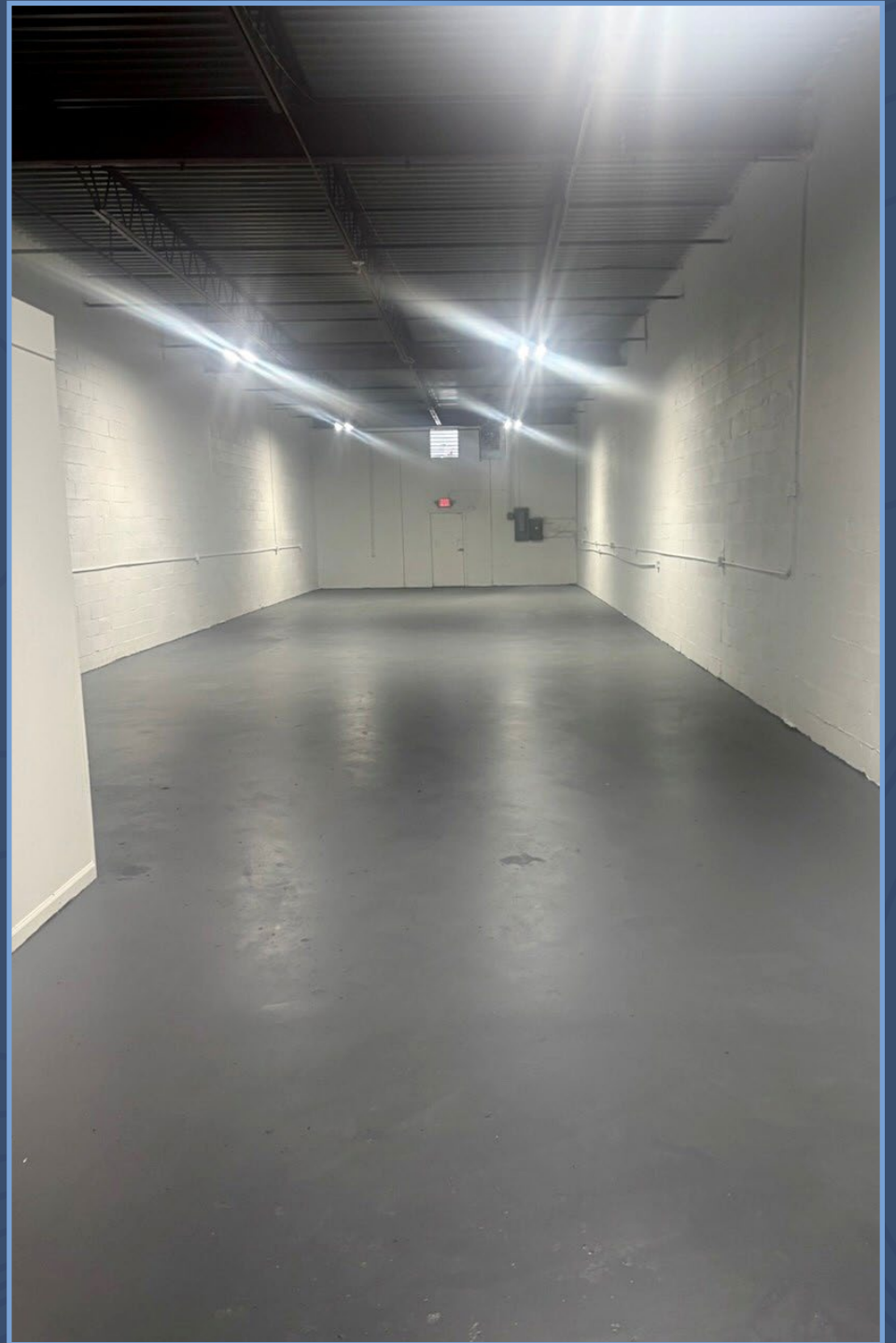
SUITE 7 SPECS

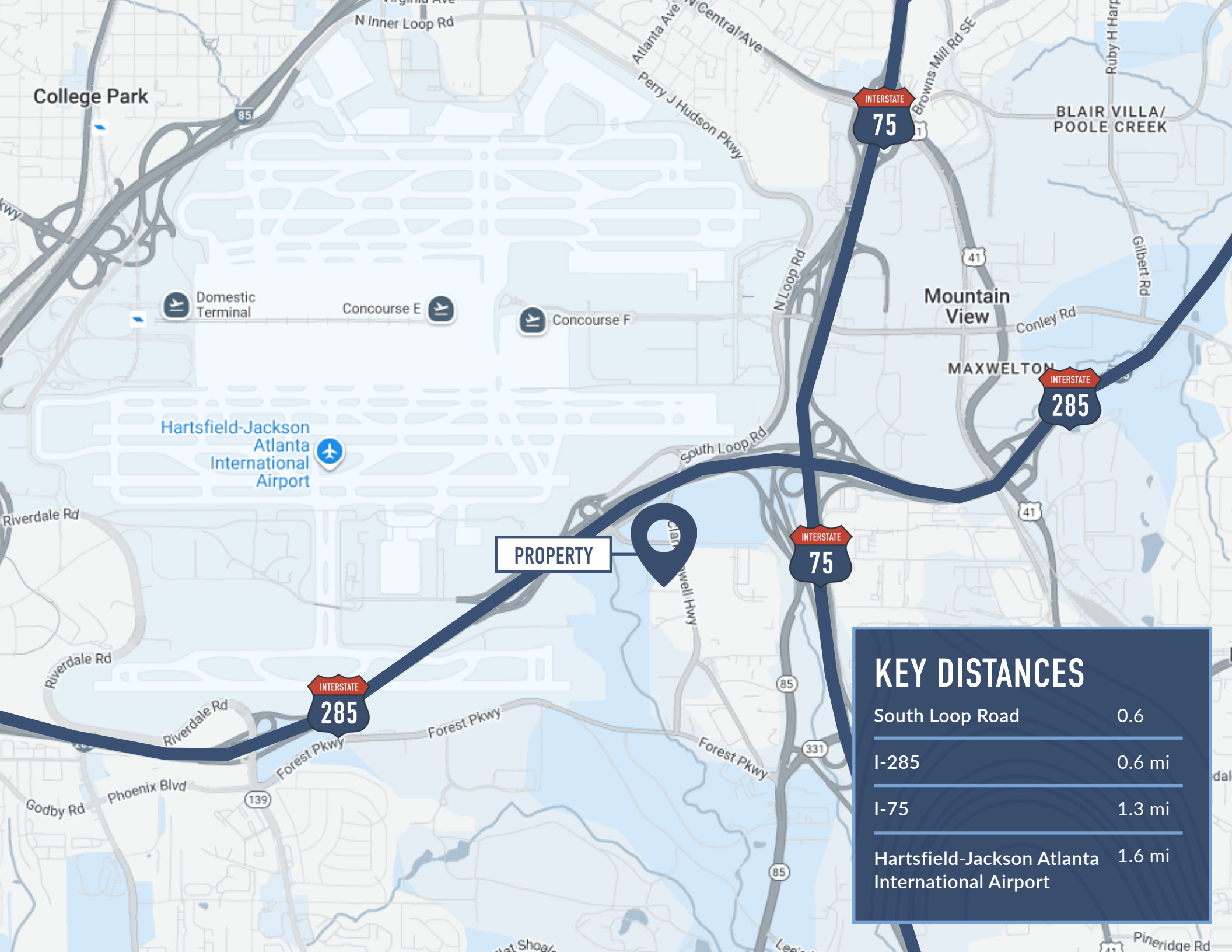
AVAILABLE 2,483 SF

LOADING 1 grade level door

KEY PLAN







PROPERTY

KEY DISTANCES	
South Loop Road	0.6
I-285	0.6 mi
I-75	1.3 mi
Hartsfield-Jackson Atlanta International Airport	1.6 mi



John Gosnell
404.563.0608
jgosnell@strategicrepartners.com
www.strategicrepartners.com

Joe Taylor
404.909.9721
jtaylor@strategicrepartners.com
www.strategicrepartners.com

