



# INDUSTRIAL PROPERTY | FOR LEASE

4326 SW 21ST ST., OKLAHOMA CITY, OK

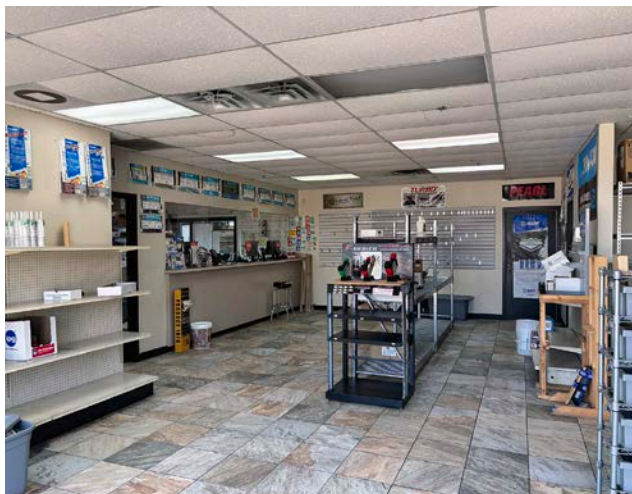
**KARLEY HARPER, CCIM**  
kharper@newmarkrp.com  
C: 405.371.3498

**BRETT PRICE, CCIM, SIOR**  
bprice@newmarkrp.com  
C: 405.613.8380

**KRIS DAVIS, SIOR**  
kgdavis@newmarkrp.com  
C: 405.202.9525

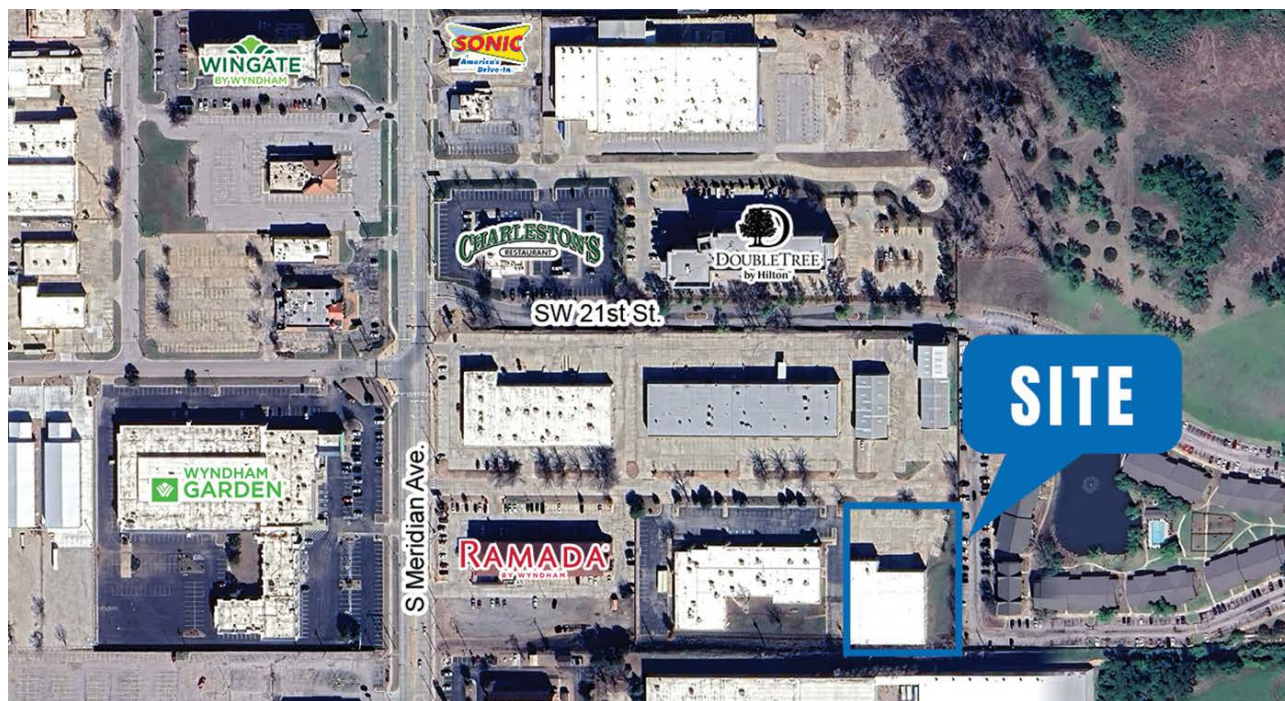
**NEWMARK**  
ROBINSON PARK

# 4326 SW 21ST ST. / FOR LEASE



## DETAILS

Available SF	20,454 SF
Lease Rate	\$6.75/SF/YR (NNN)
Building Size	20,454 SF
Lot Size	1.32 Acres
Submarket	Southwest
Cross Streets	SW 21st & S Meridian Ave.



## HIGHLIGHTS

- 18,654 SF± warehouse | 1,800 SF± office
- 17' clear height
- (3) 10' x 12' overhead doors
- (2) 8' x 8' docks with end of dock levelers
- 33.5' x 34.5' column spacing
- Warehouse heat
- 480V, 3-phase power, 200 amps
- 2 offices, showroom, office restroom & warehouse restroom