

FOR SALE
5.95 ± ACRES - COMMERCIAL
275-301 W LAKE MARY BLVD. SANFORD, FL 32773



Three parcels of commercial land conveniently located in W Lake Mary Blvd. Conveniently located in one of the busiest intersections in Seminole County, 17-92 and W Lake Mary Blvd. This area has flourished with multiple residential communities and business.

- 887' frontage on W Lake Mary Blvd. and 1,452' of Lake Minnie.
- Next to national retailers including Walmart, Aldi, Chipotle, Starbucks, Lowes, LA Fitness and many more.
- Just few miles from Orlando Sanford International Airport.
- Close from I-4, US 17/92 and SR417.
- AADT: 20,500 W Lake Mary Blvd | 37,000 S Orlando Dr.

PROPERTY HIGHLIGHTS

SIZE:
5.95 Acres Total

ZONING:
Commercial / C-1 Zoning

ADDRESS:
275-301 W Lake Mary Blvd
Sanford, FL 32773

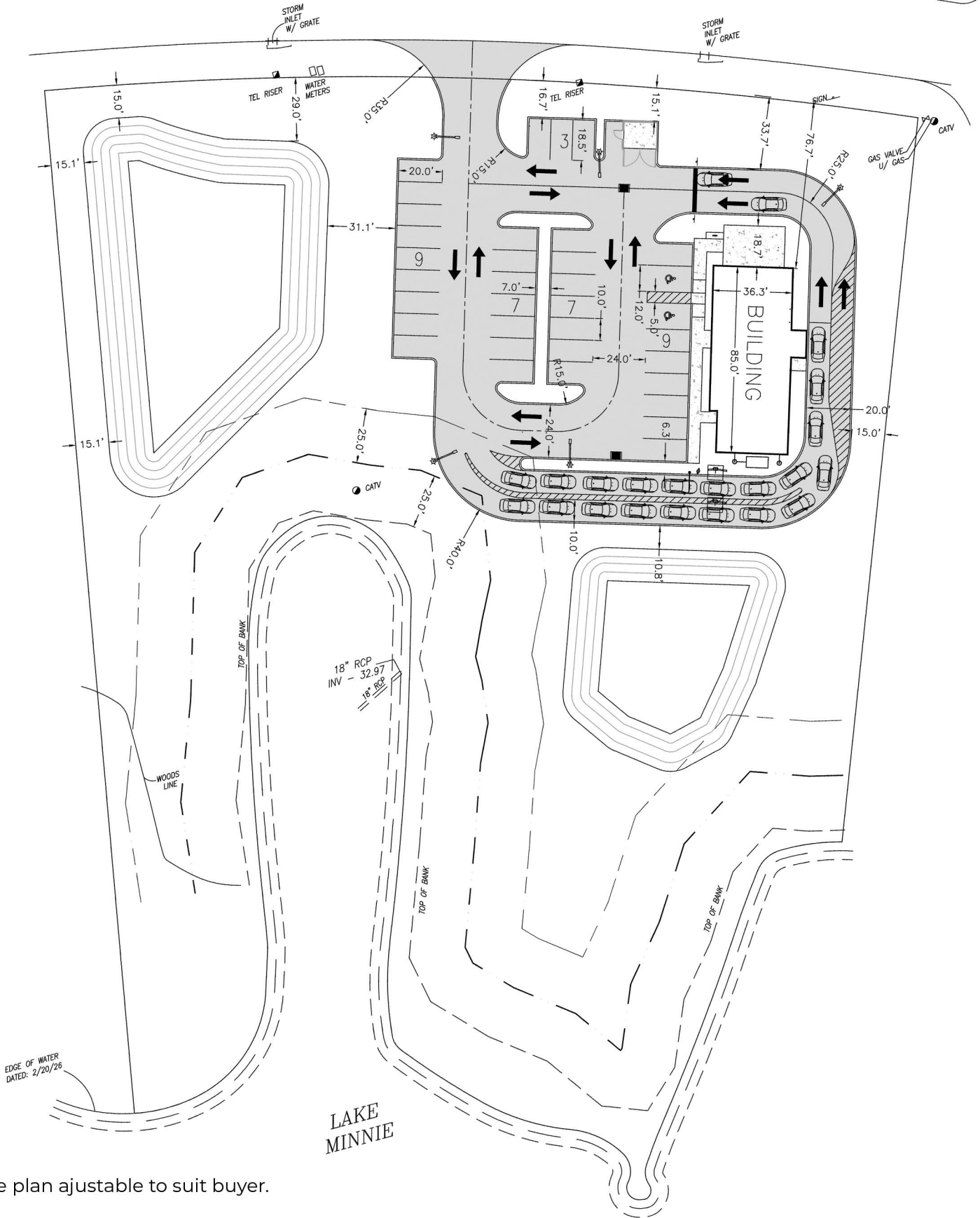
COUNTY:
Seminole County

PRICE:
Please Call

PRELIMINARY SITE PLAN

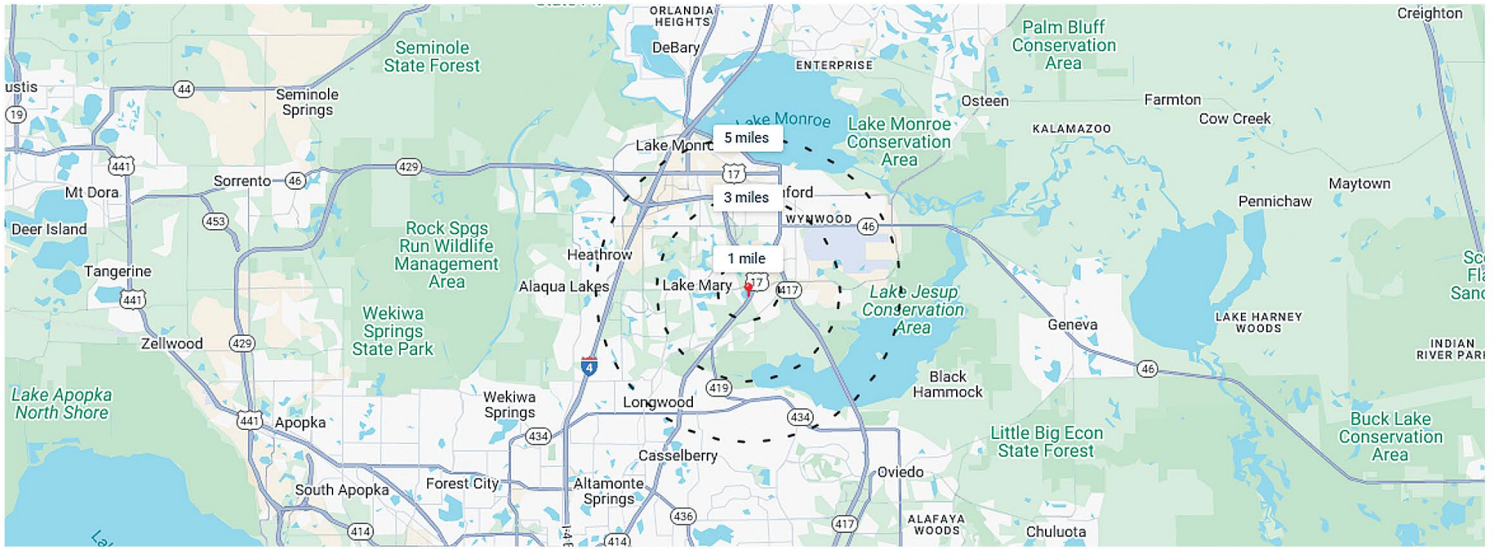
LAKE MARY BOULEVARD

ASPHALT PAVEMENT WIDTH VARIES



*Site plan ajustable to suit buyer.

DEMOGRAPHICS



1 Mile

3 Miles

5 Miles

Population			
2023	19,172	94,267	205,667
2022	18,062	93,267	201,876
2021	17,665	92,848	197,505
2020	17,745	93,075	197,549
2019	20,023	97,794	194,440
Household Income			
2023 Median Income	\$59,396	\$74,310	\$81,023
Under \$25k	1,242	4,698	9,195
\$25k - \$50k	1,745	6,835	13,609
\$50k - \$100k	2,502	11,510	25,459
\$100k - \$150k	976	6,790	15,014
Above \$150k	862	6,631	16,979





LOWE'S LAIFITNESS.
Waffle House

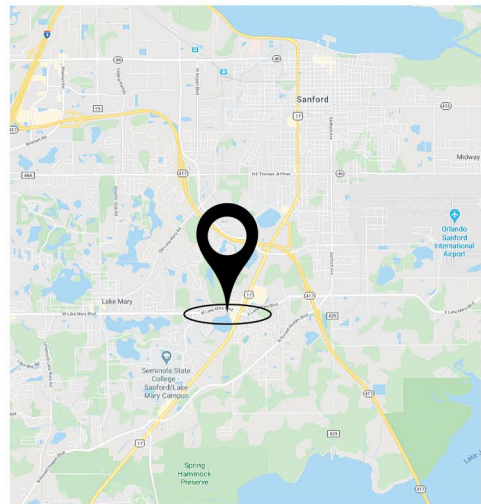


BOBBY LUTHRA
Licensed Real Estate Associate

407-468-0099
 bobluthra@pibland.com

OFFICE LOCATION:
 27 N Summerlin Ave
 Orlando, FL 32801
 www.pibland.com

CONTACT US:
 Phone: 407-649-9888
 Fax: 407-649-7222



This document has been prepared by Property Investment Brokers for advertising and general information only. No warranty or representation, express or implied, is made as to the accuracy of the information contained herein, and same is submitted subject to errors, omissions, change of price, rental or other conditions, withdrawal without notice, and to any special listing conditions imposed by our principals.

