

# FOR LEASE

2150 Gettler St.  
Dyer, IN



## PROPERTY DETAILS



- **63,670 SF Building**

- **Min. Divisible: 1,325 RSF | Max Contiguous: 11,700 RSF**



- **On-campus of Franciscan St. Margaret's Hospital**



- **Easy access to US 30**



- **Class A medical office building**



- **Covered patient drop-off**



- **Valet parking available**



- **Wonderful views of adjacent Forest Preserve**



## CONTACT

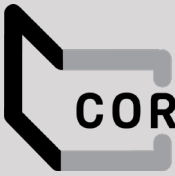
**Bill McClamroch**

Associate, Brokerage

317.919.2992

[bmcclamroch@cciin.com](mailto:bmcclamroch@cciin.com)

HQ: Cornerstone Companies, Inc.  
8902 N Meridian Street, Suite 205  
Indianapolis, IN | 317.841.9900  
[cornerstonecompaniesinc.com](http://cornerstonecompaniesinc.com)



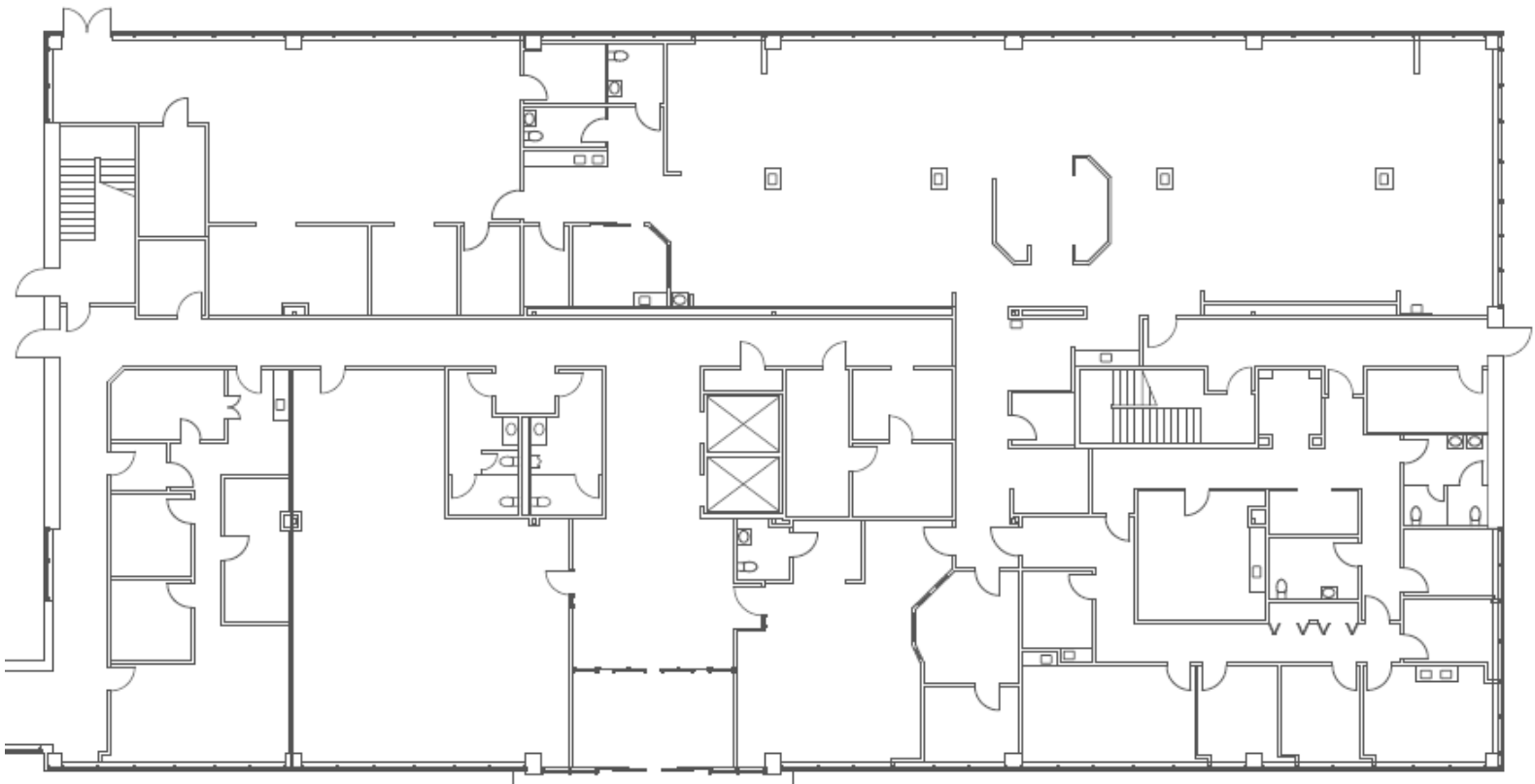
**CORNERSTONE**

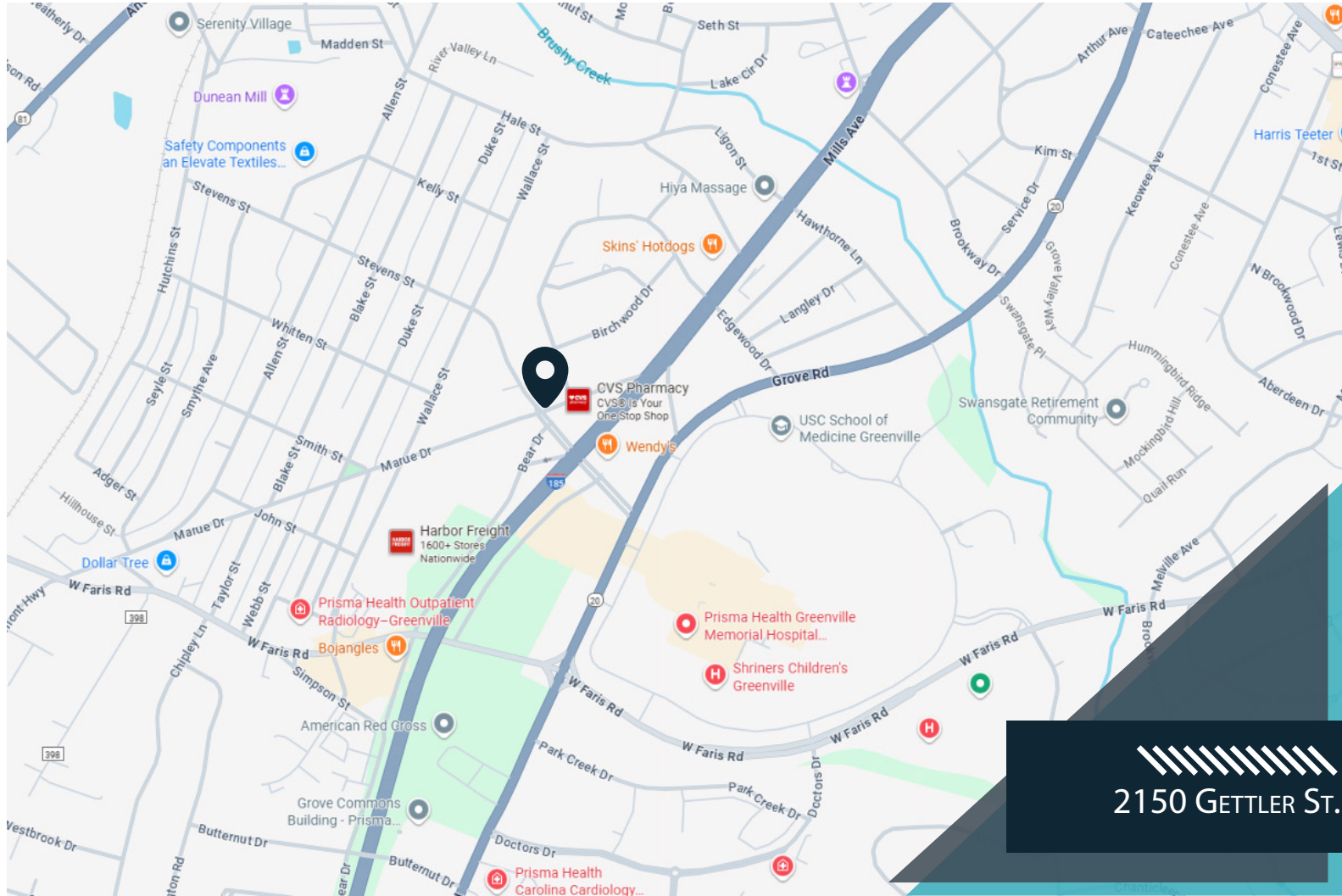
# FLOOR PLAN

2150 Gettler St. Dyer, IN



1st Floor Suites Available | 11,700 Contiguous





2150 GETTLER ST.

# DEMOGRAPHICS (5 - mile radius)

- 116,617 Population
- 44.1 Median Age
- 45,130 Households
- \$84,658 Median Household Income
- \$104,149 Average Household Income



## CONTACT

**Bill McClamroch**  
 Associate, Brokerage  
 317.919.2992  
 bmclamroch@cciin.com

Cornerstone Companies, Inc.  
 8902 N Meridian Street, Suite 205  
 Indianapolis, IN 46260

