



# Now Leasing

## **GOLDEN GATE PLAZA**

1,400 - 9,200 SQUARE FEET AVAILABLE  
IN THE HEART OF TROY

### **PROPERTY HIGHLIGHTS**

- New out lot available
- Newly renovated retail/medical space
- Excellent location on Big Beaver and Dequindre Road
- Ample parking
- Great visibility from Big Beaver Rd
- End cap available

Asking Lease Rate: \$28.00 - \$32.00 PSF NNN

**2999 East Big Beaver  
Troy, Michigan**

**Robert Mihelich**

+1 248 581 3366

[robert.mihelich@am.jll.com](mailto:robert.mihelich@am.jll.com)

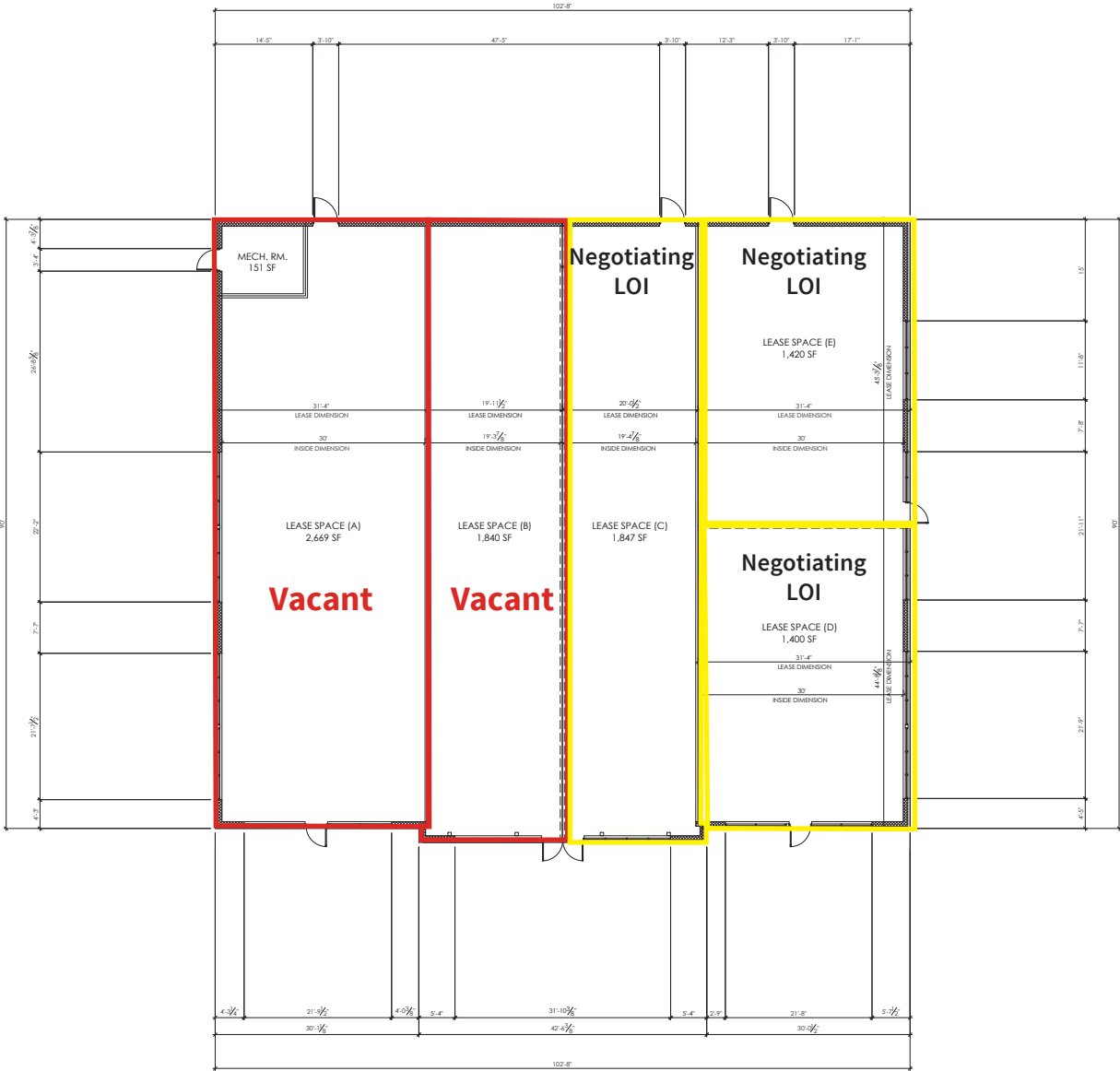
**Jennifer Lech**

+1 248 581 3383

[jennifer.lech@am.jll.com](mailto:jennifer.lech@am.jll.com)

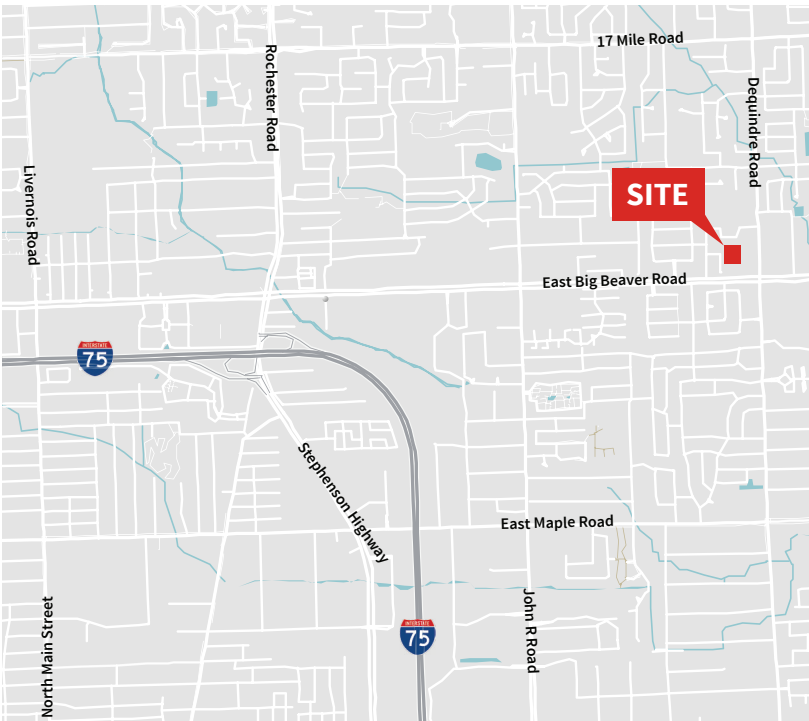
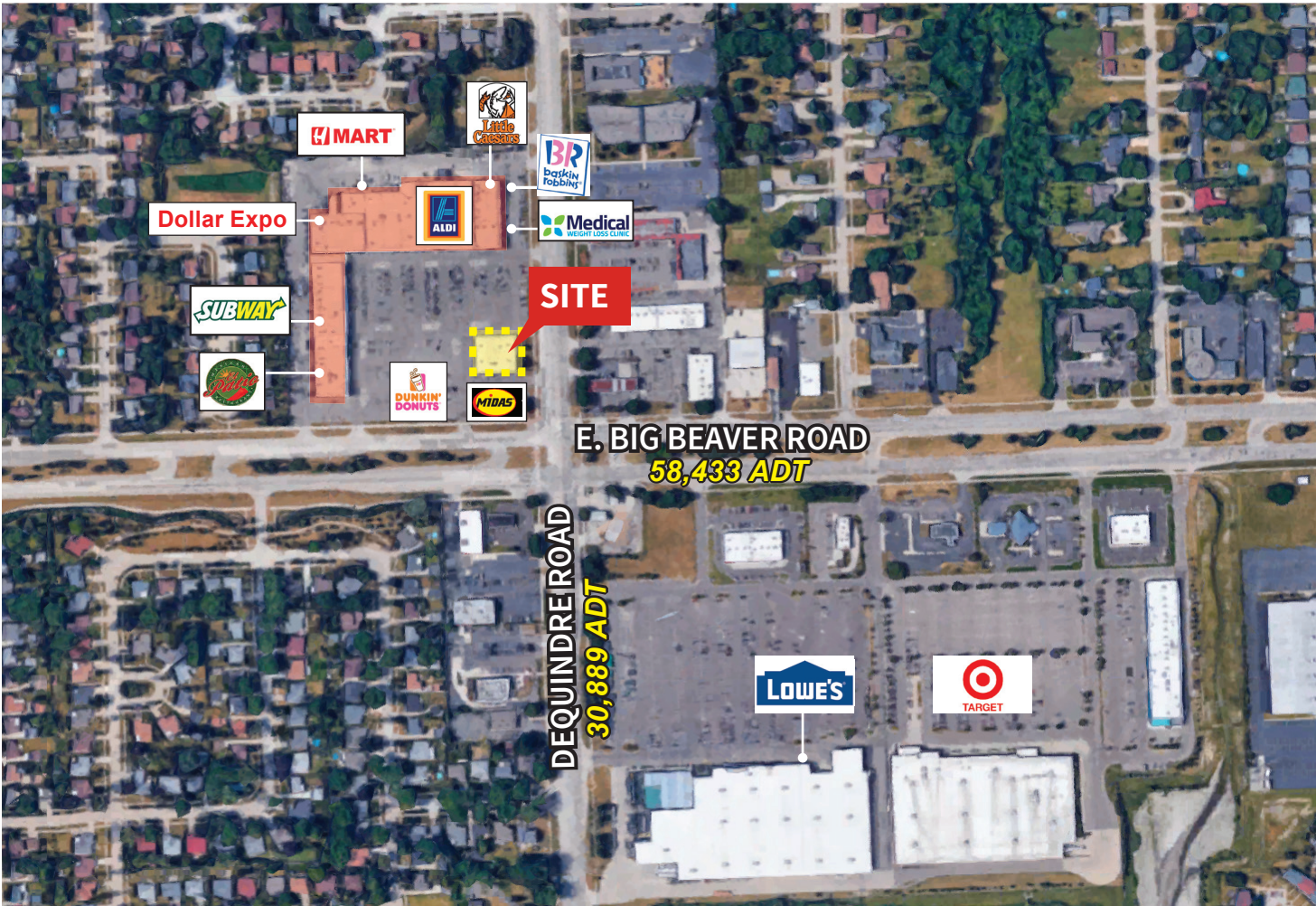
[jll.com/detroit](http://jll.com/detroit)

# FLOORPLAN





# LOCATION MAP



# AREA MAP



## Demographics

1 Mile	
Estimated Population	15,349
Estimated Total Households	5,676
Average Household Income	\$82,362

3 Mile	
Estimated Population	96,153
Estimated Total Households	35,245
Average Household Income	\$84,328

5 Mile	
Estimated Population	257,964
Estimated Total Households	103,622
Average Household Income	\$83,690

## Traffic Counts

E. Big Beaver	58,433
Dequindre Road	30,889

## 2999 East Big Beaver Troy, Michigan

Robert Mihelich

+1 248 581 3366

[robert.mihelich@am.jll.com](mailto:robert.mihelich@am.jll.com)

Jennifer Lech

+1 248 581 3383

[jennifer.lech@am.jll.com](mailto:jennifer.lech@am.jll.com)