

1601 W FM 917, Joshua, TX

WAG

WALSH
WEGMAN
GIORDANO
Team

COMPASS
COMMERCIAL

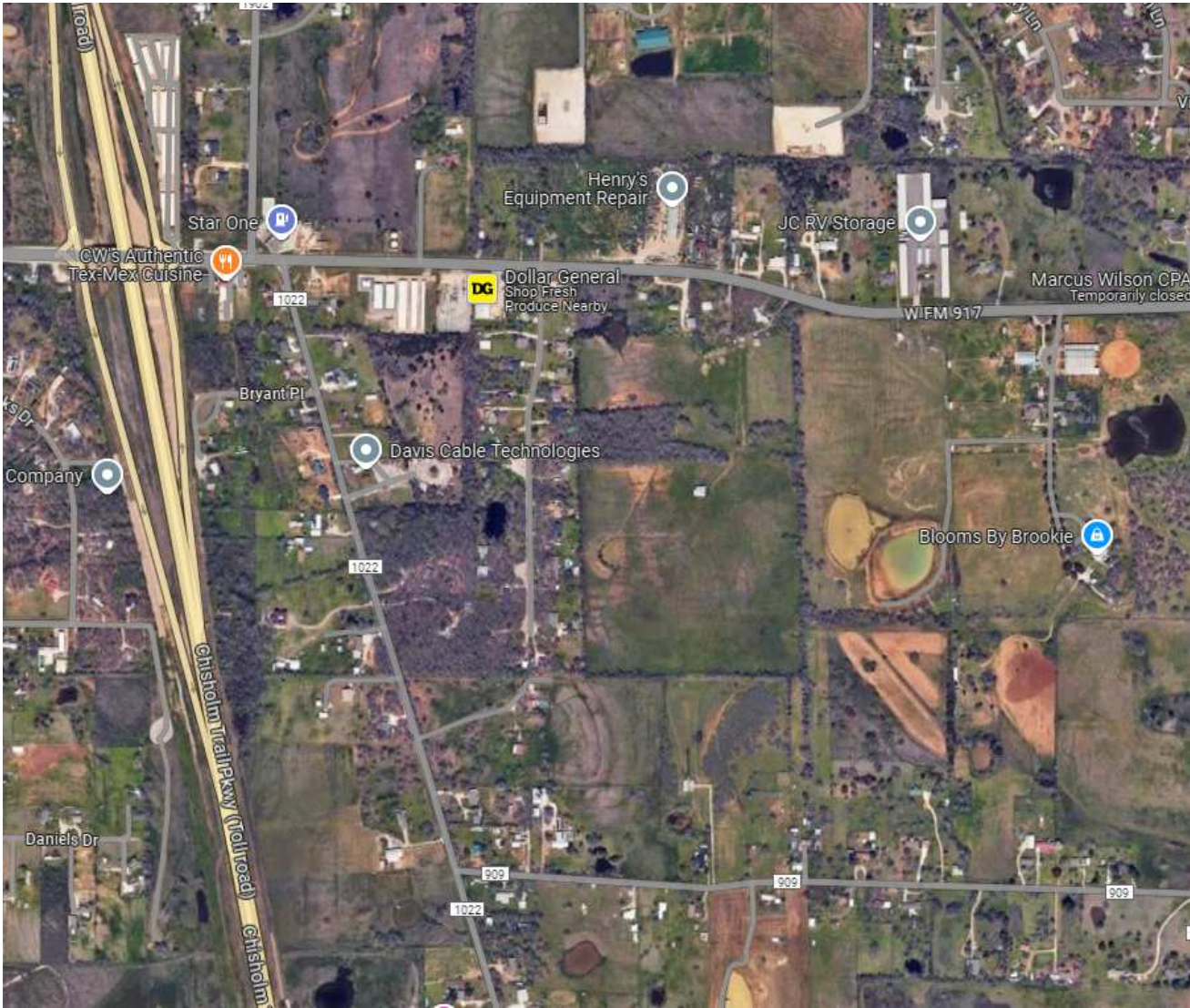


1601 W FM 917, Joshua, Texas

1601 W FM 917 JOSHUA, TEXAS

Size	+/- 46 acres
Frontage	FM 917 Approximately 250' of frontage
Zoning	AG Exempt/Burleson ETJ
Flood Plain	None
Price	Contact Broker

Approximately 46 acres of raw, level development land situated approximately 1/2 mile east of Chisholm Trail Parkway and 1.25 miles west of the quaint town of Joshua. Johnson County SUD has an 18" waterline available along the southern boundary of the property. 45 acres are currently ag-exempt in unincorporated Johnson County, Burleson ETJ.



WVG
WALSH
WEGMAN
GIORDANO
Team

COMPASS
COMMERCIAL



FM 917

FM 917

FM 917

FM 917

FM 917

FM 917

FM 917

Boundaries are approximate

SCOTT CT

Joshua Oaks

SCOTT CT

COUNTY RD 1022

land id.

32.4558, -97.4082

3D

Basemap >



Boundary Lines Are Approximate













817.312.9586

Eric.Walsh@compass.com

Compass is a licensed real estate broker. All material is intended for informational purposes only and is compiled from sources deemed reliable but is subject to errors, omissions, changes in price, condition, sale, or withdrawal without notice. No statement is made as to the accuracy of any description or measurements (including square footage). This is not intended to solicit property already listed. No financial or legal advice provided. Equal Housing Opportunity. Photos may be virtually staged or digitally enhanced and may not reflect actual property conditions.